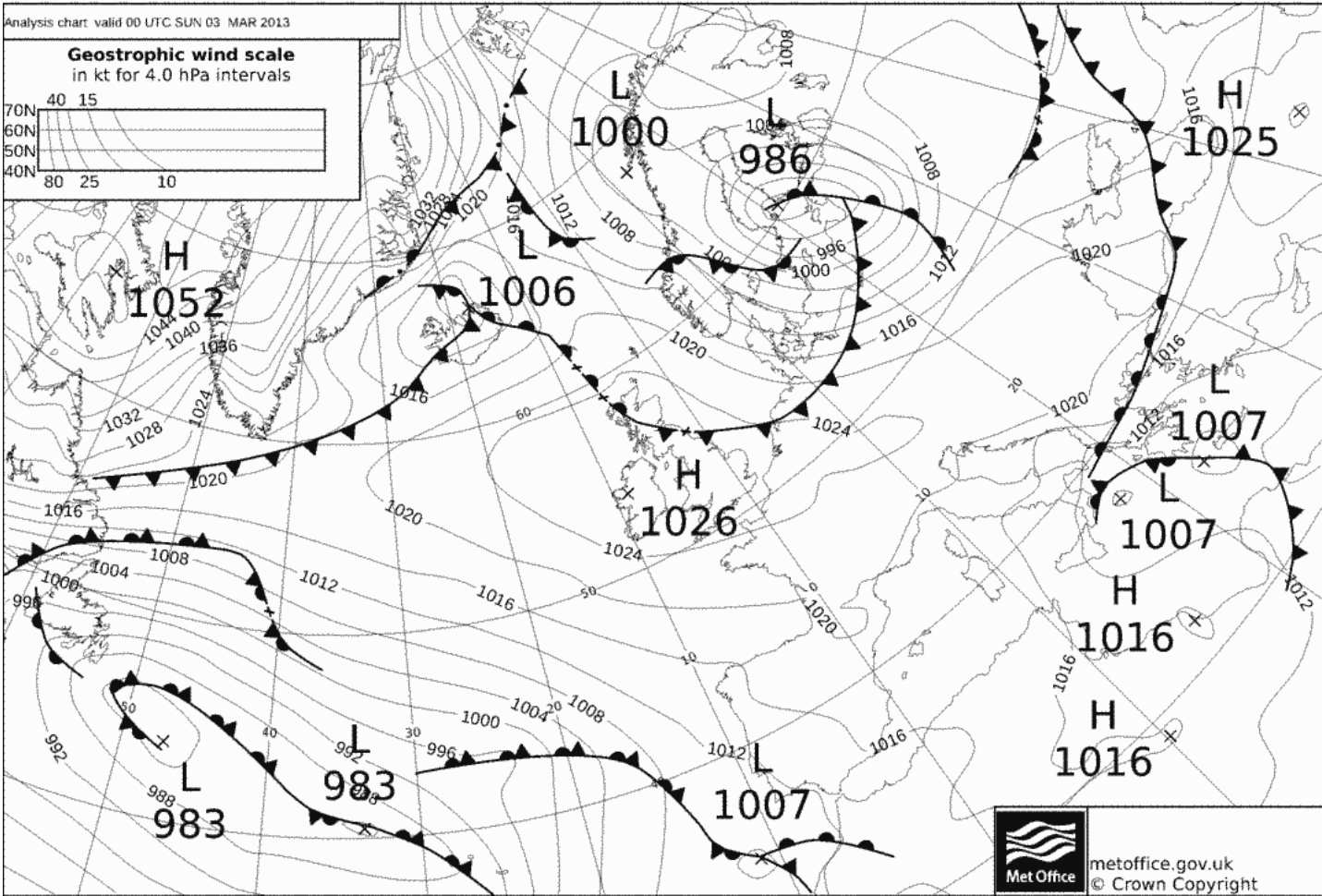
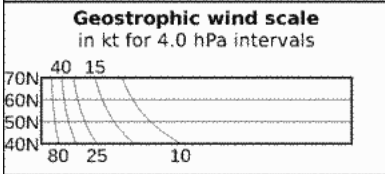


Dimanche 3 mars 2013 matin

vent irrégulier

- Zone de course: La Trinité/mer (SO du Ptt Trého)
- Vent d'Est, très irrégulier, surtout en intensité, avec des molles très locales et temporaires, de 12 à 18nds.
- Ciel straté en basse couche
- T° de air ~5° /T°mer~10°
- Sensation d'humidité sur l'eau
- L'émagramme indique de l'instabilité en très basse couche (+ une inversion juste au dessus)

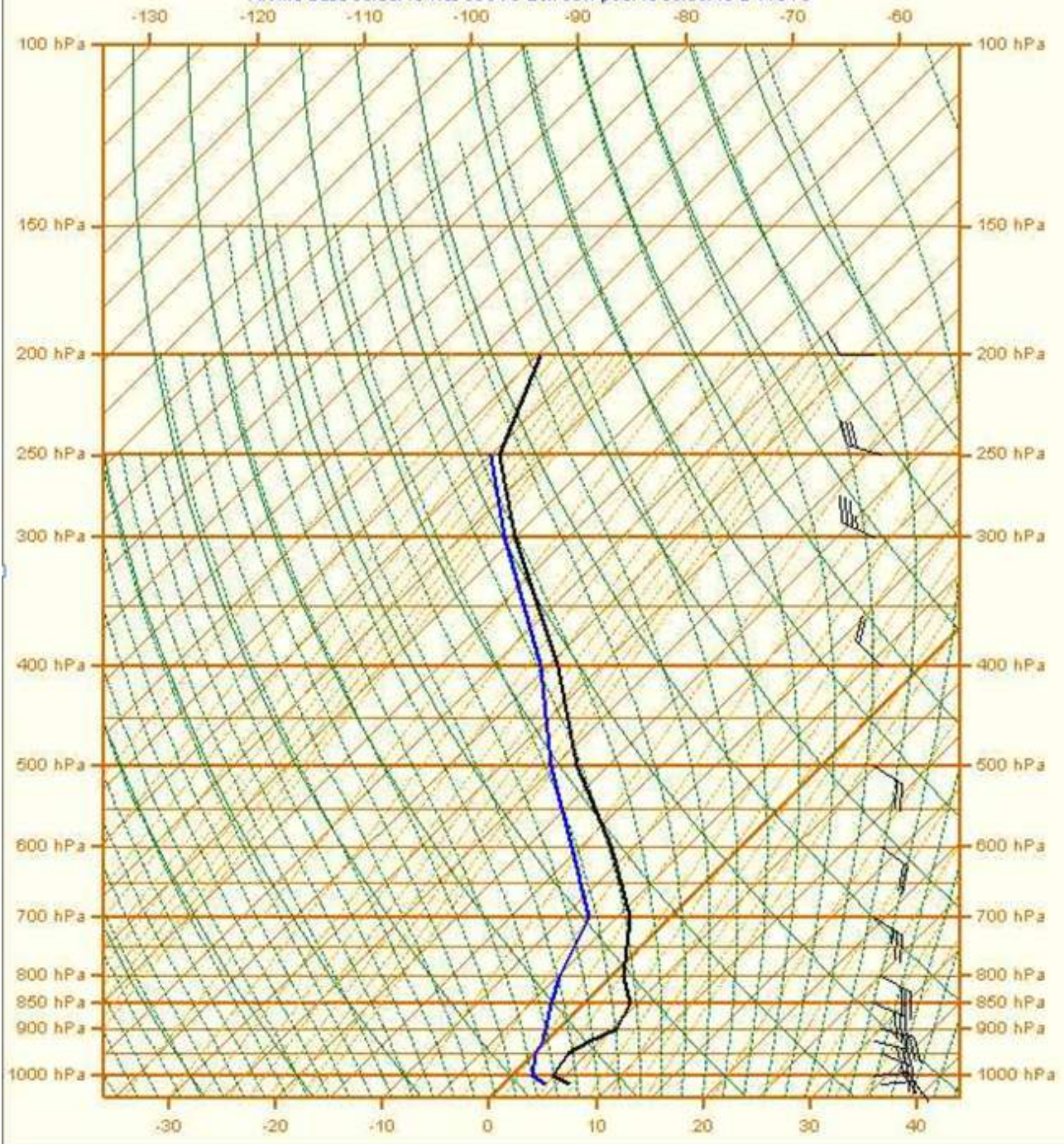
Analysis chart valid 00 UTC SUN 03 MAR 2013



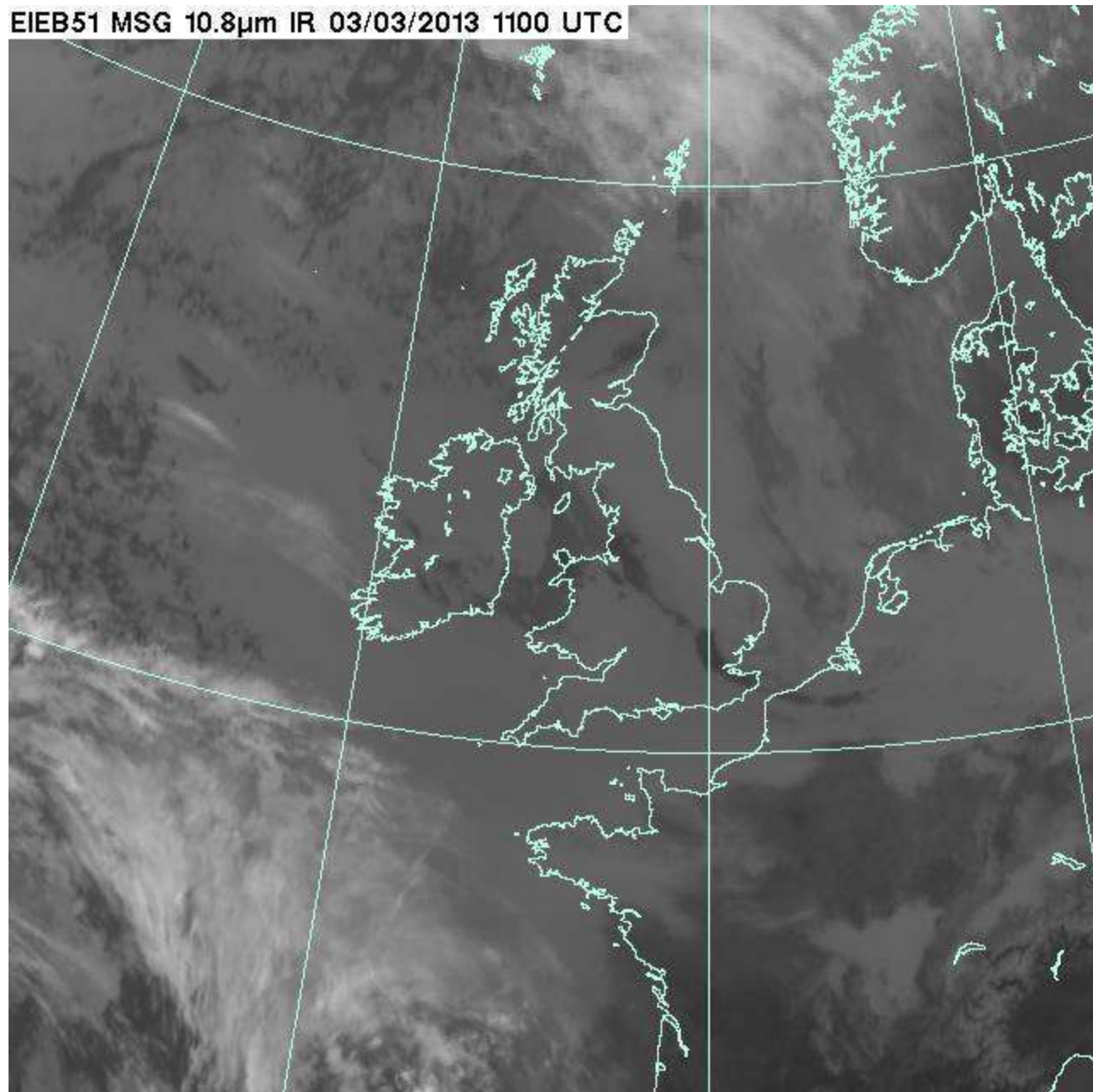
metoffice.gov.uk
© Crown Copyright

[QUIBERON]

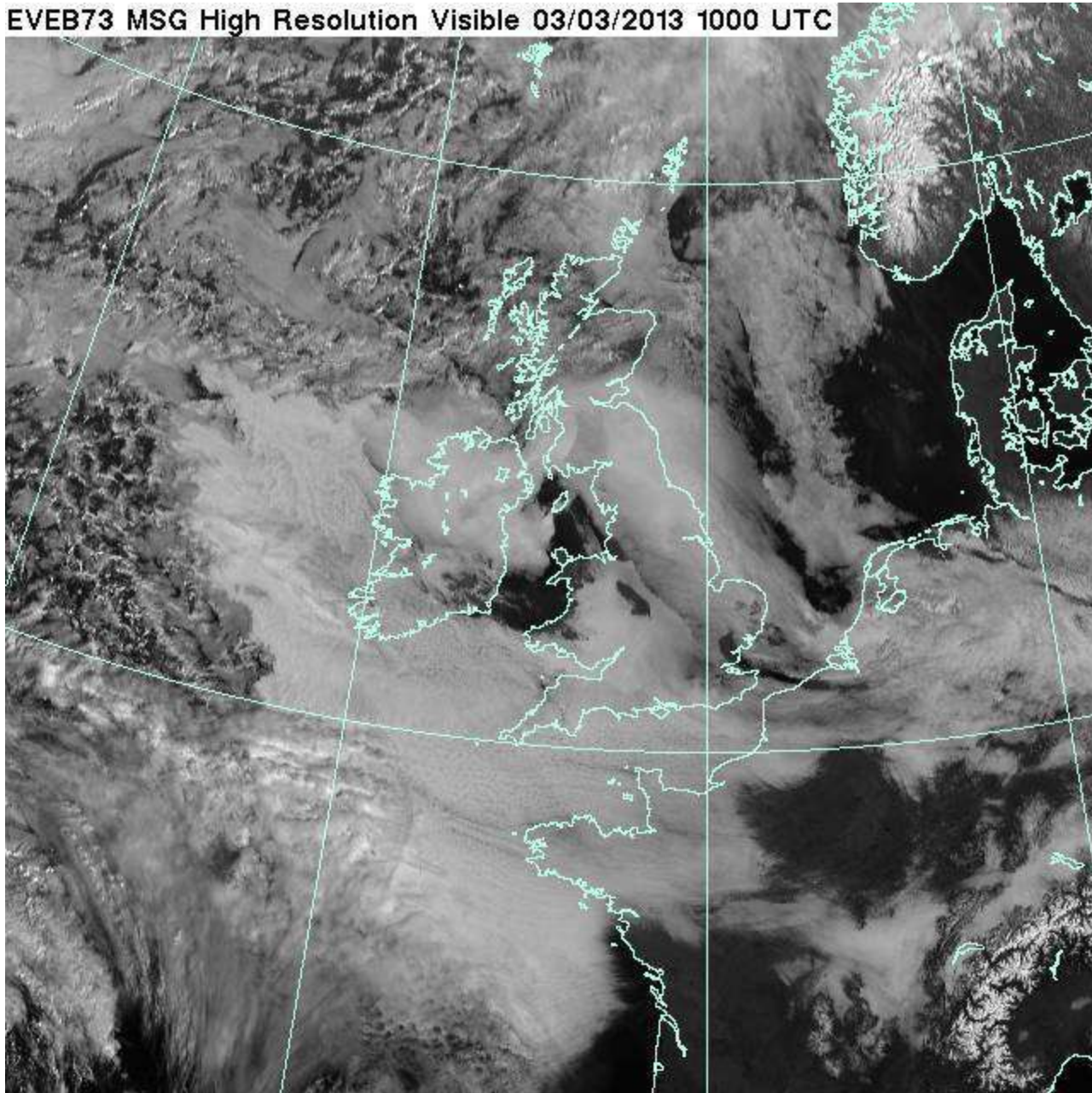
Arôme Base 03/03/13 Rés 06UTC Ech 05H pour le 03/03/13 à 11UTC



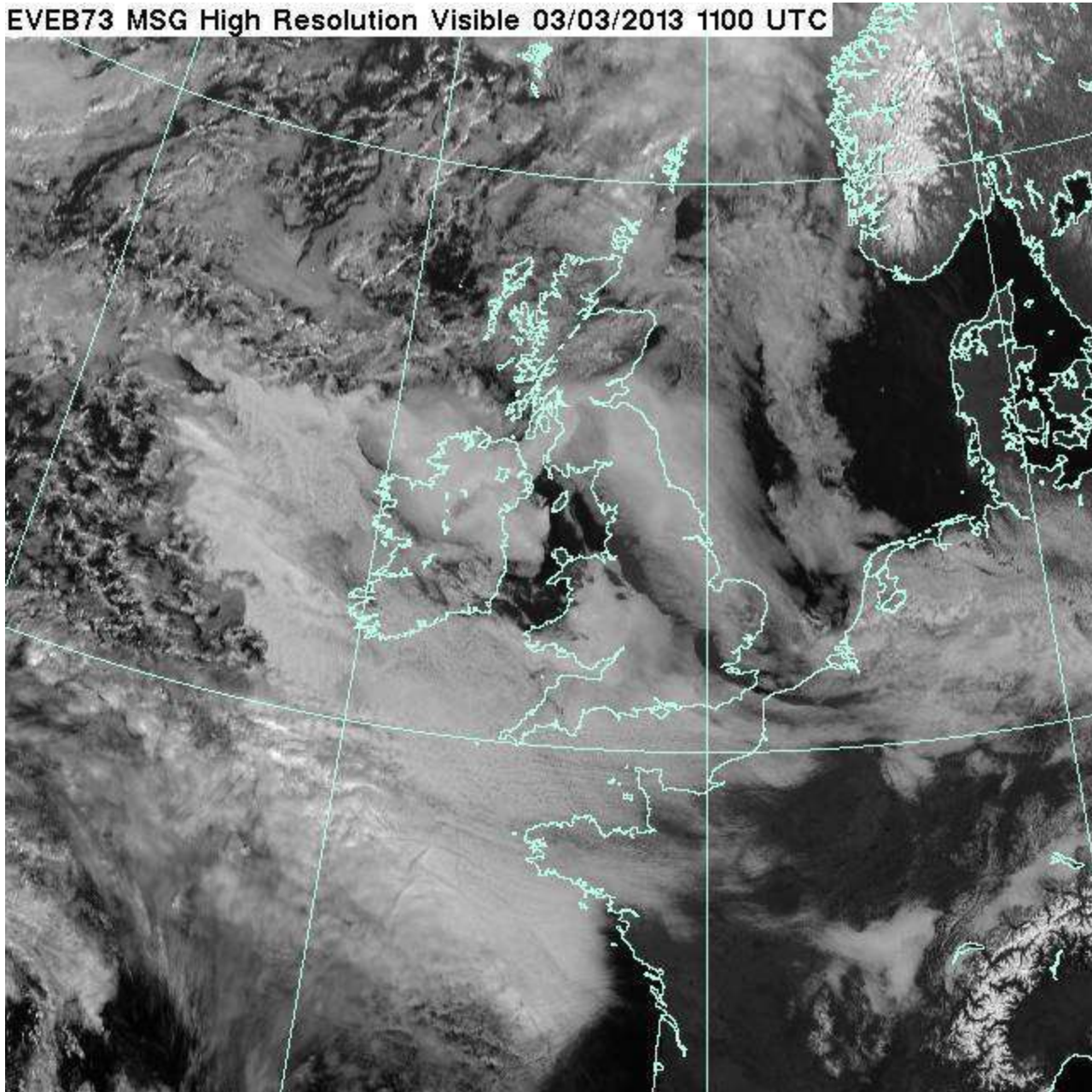
EIEB51 MSG 10.8 μ m IR 03/03/2013 1100 UTC



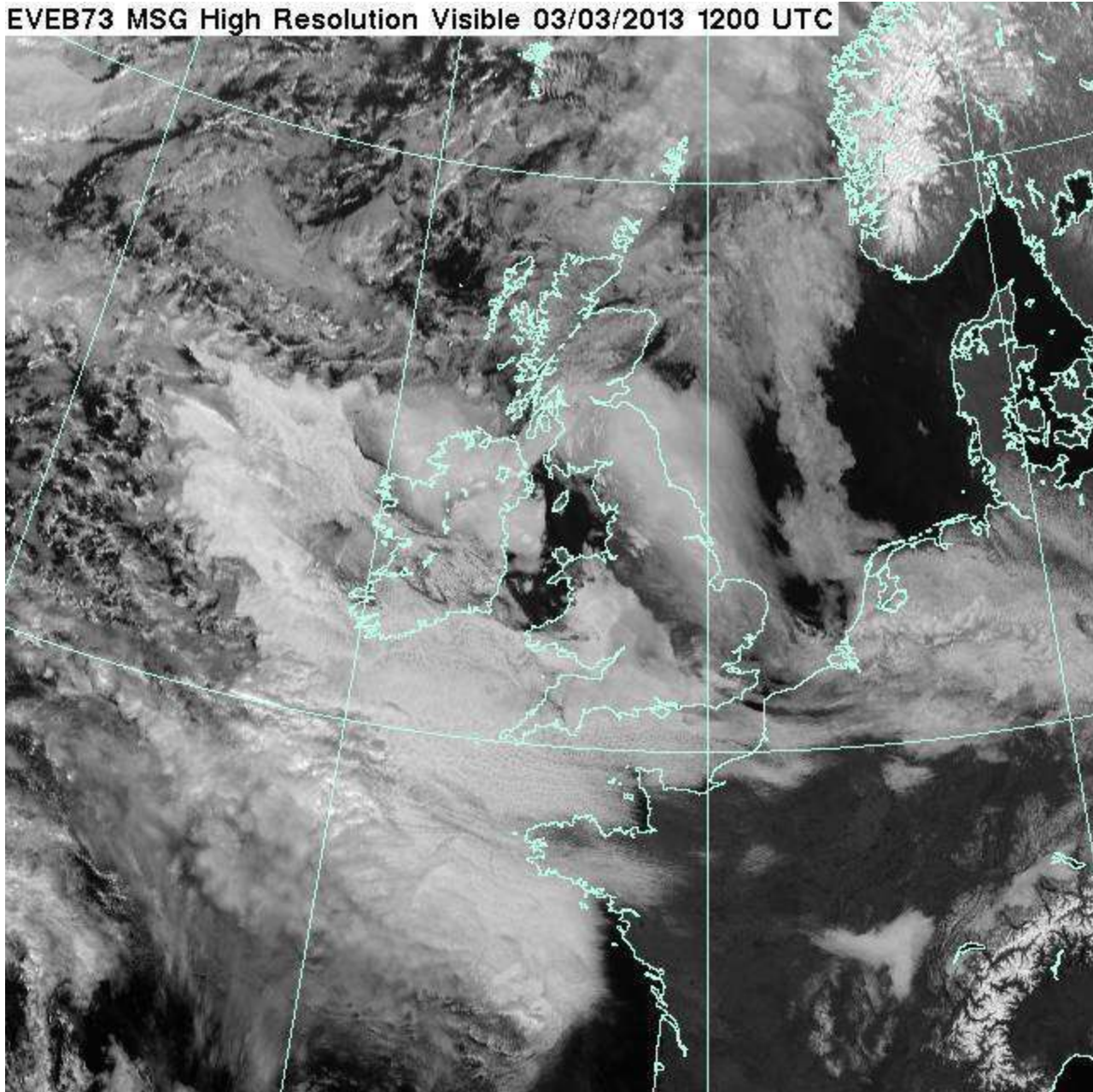
EVEB73 MSG High Resolution Visible 03/03/2013 1000 UTC



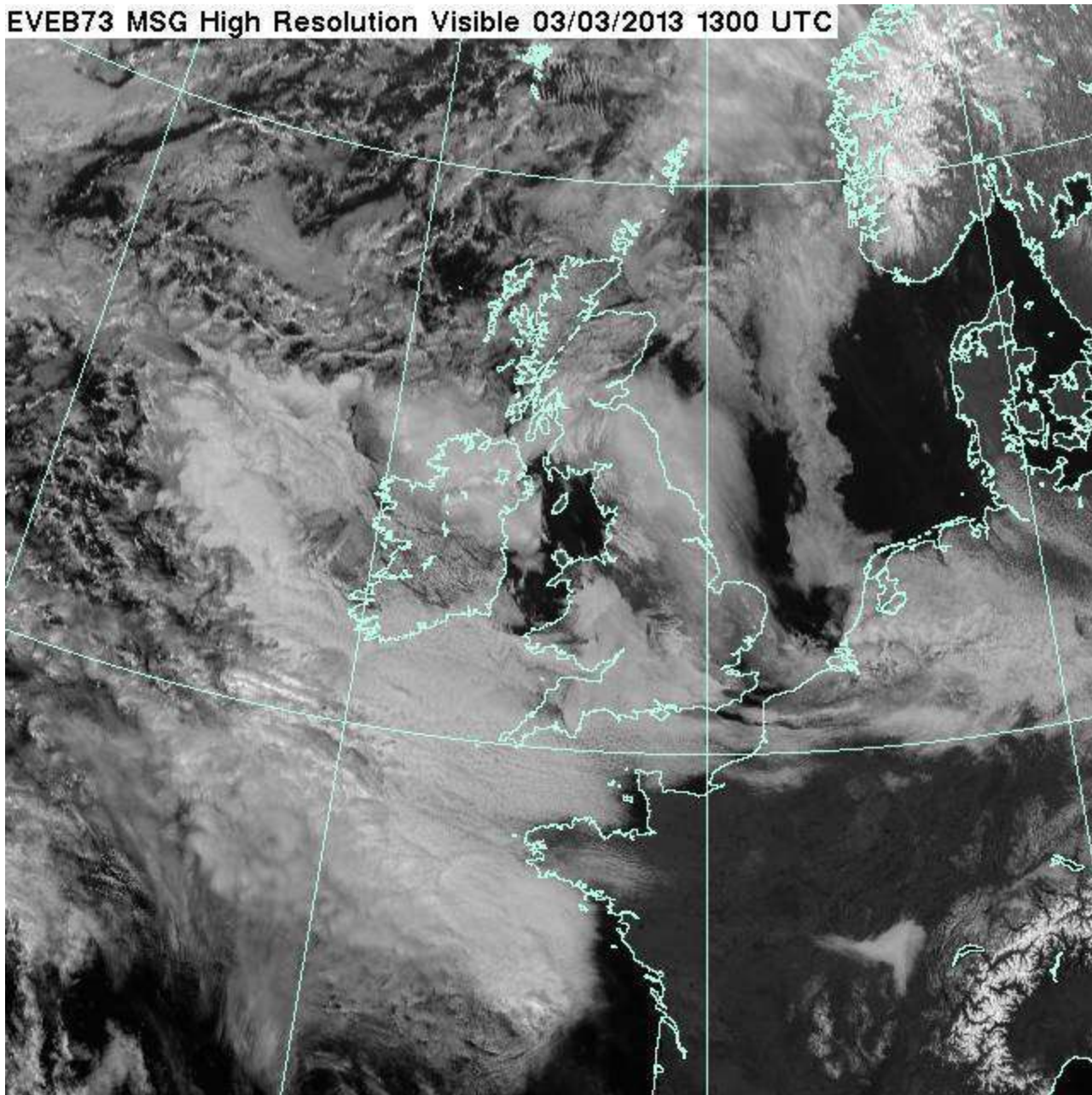
EVEB73 MSG High Resolution Visible 03/03/2013 1100 UTC



EVEB73 MSG High Resolution Visible 03/03/2013 1200 UTC



EVEB73 MSG High Resolution Visible 03/03/2013 1300 UTC



EVEB73 MSG High Resolution Visible 03/03/2013 1400 UTC

