

# Scénario(s) prévu(s) pour LUNDI 11 MARS

## PASSAGE D'UN CENTRE DEPRESSIONNAIRE

**Ciel:** pluie

**Vent:** Ce matin, S, 10/20nds mollissant 8/15nds.  
Cet aprem, N, 12/15nds se renforçant 20/25nds avec rafales 30/35nds.

**Mer:** peu agitée

**Températures :** mini 4°/maxi 10°

**Température de l'eau :** 10°

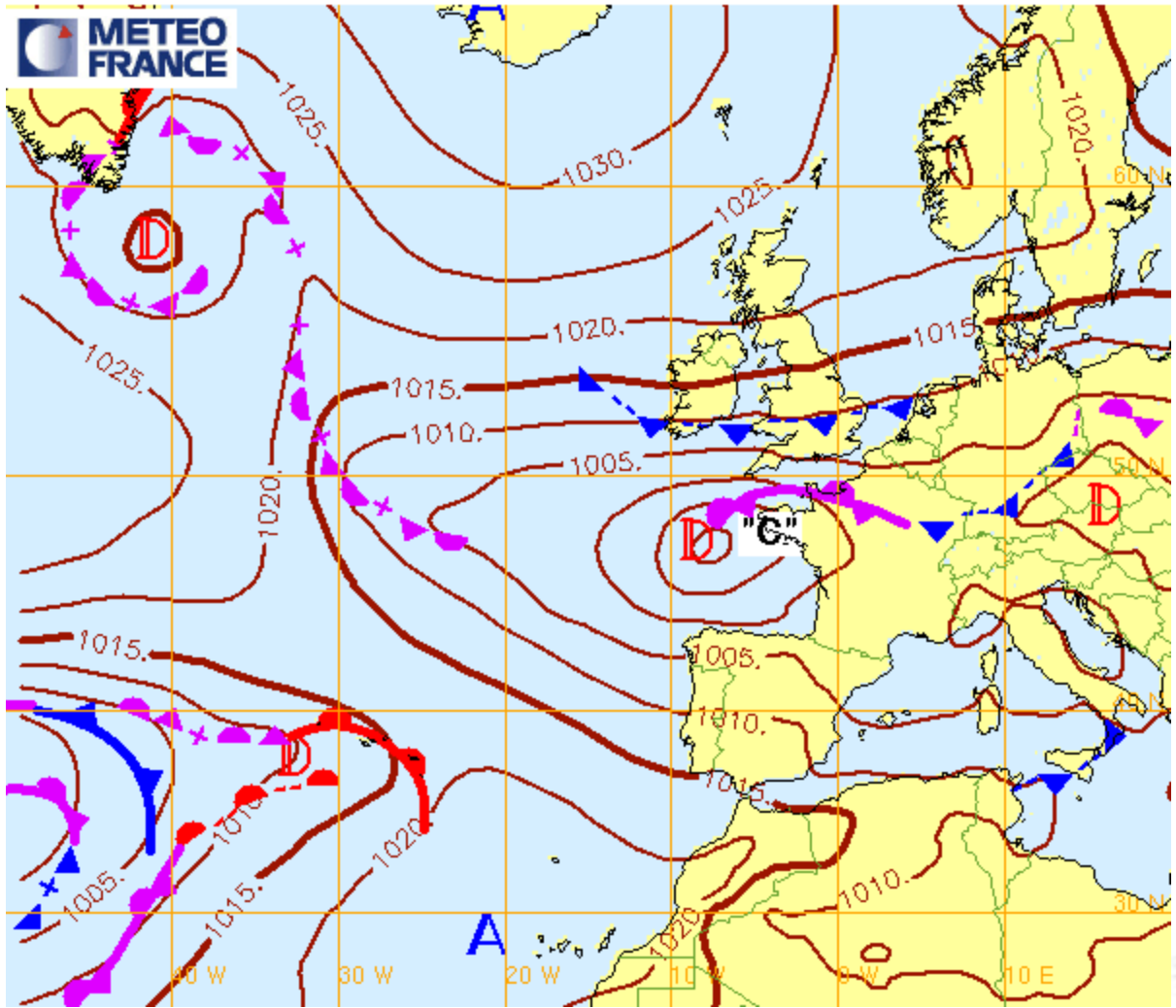
**T°ressentie l'aprem:** 1°

**Courant:** BM 10H33 - PM 17H47    **COEF** 100

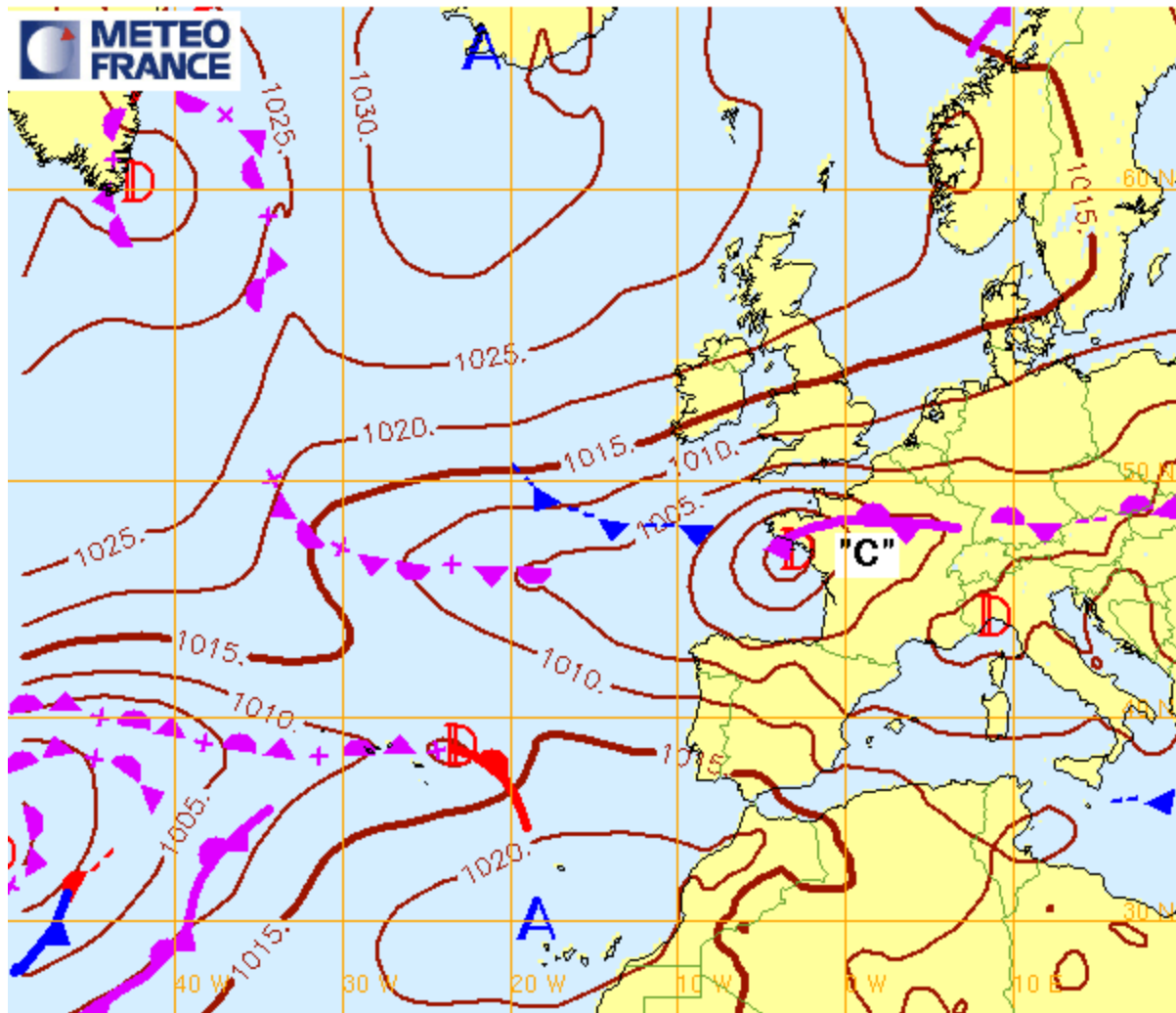
**Soleil :** Lever 7H32 - Coucher 19H11



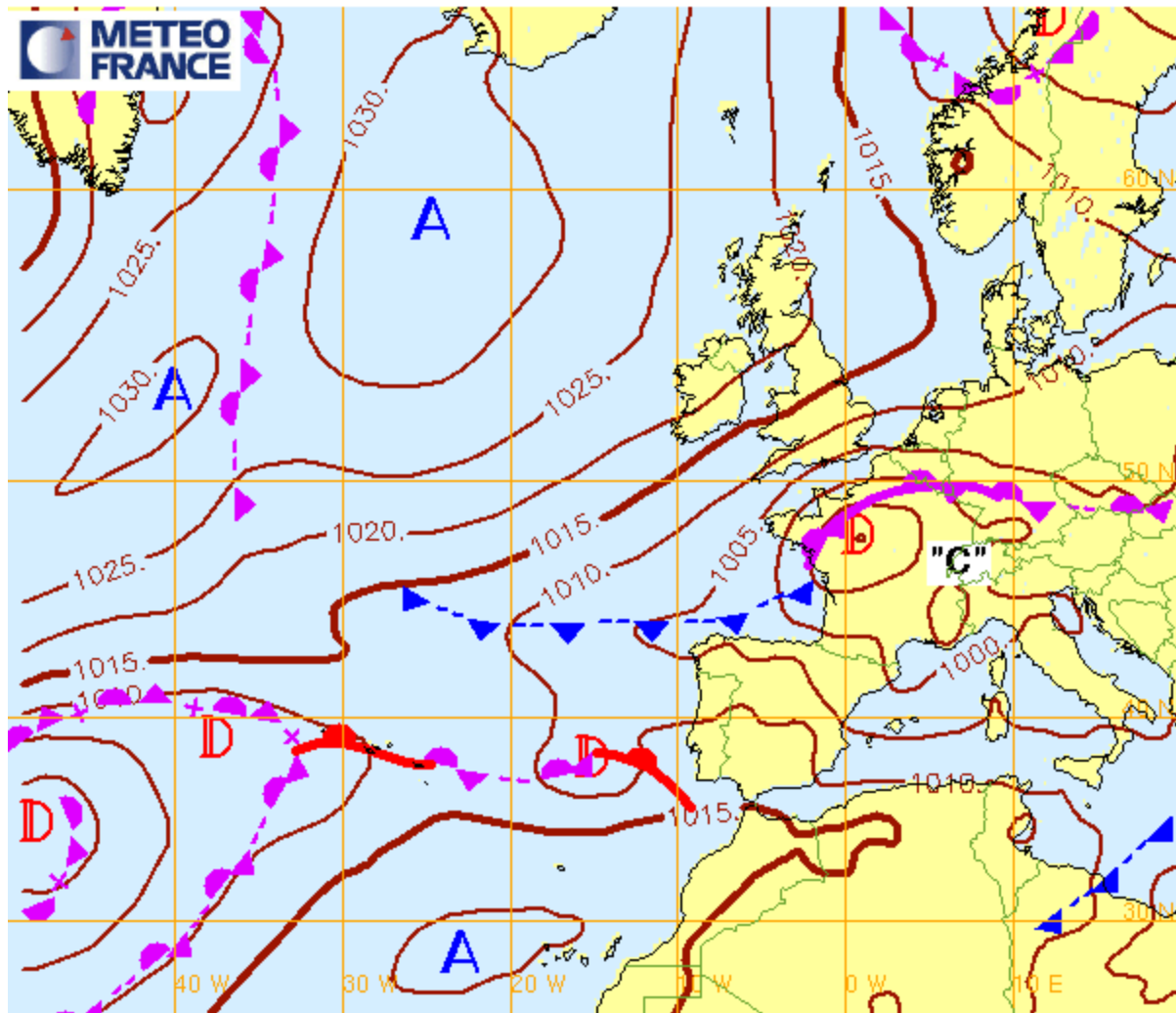
Analyse Fronts et isobares du 11/03/2013 00hUTC (reseau: 11/03/2013 00hUTC)

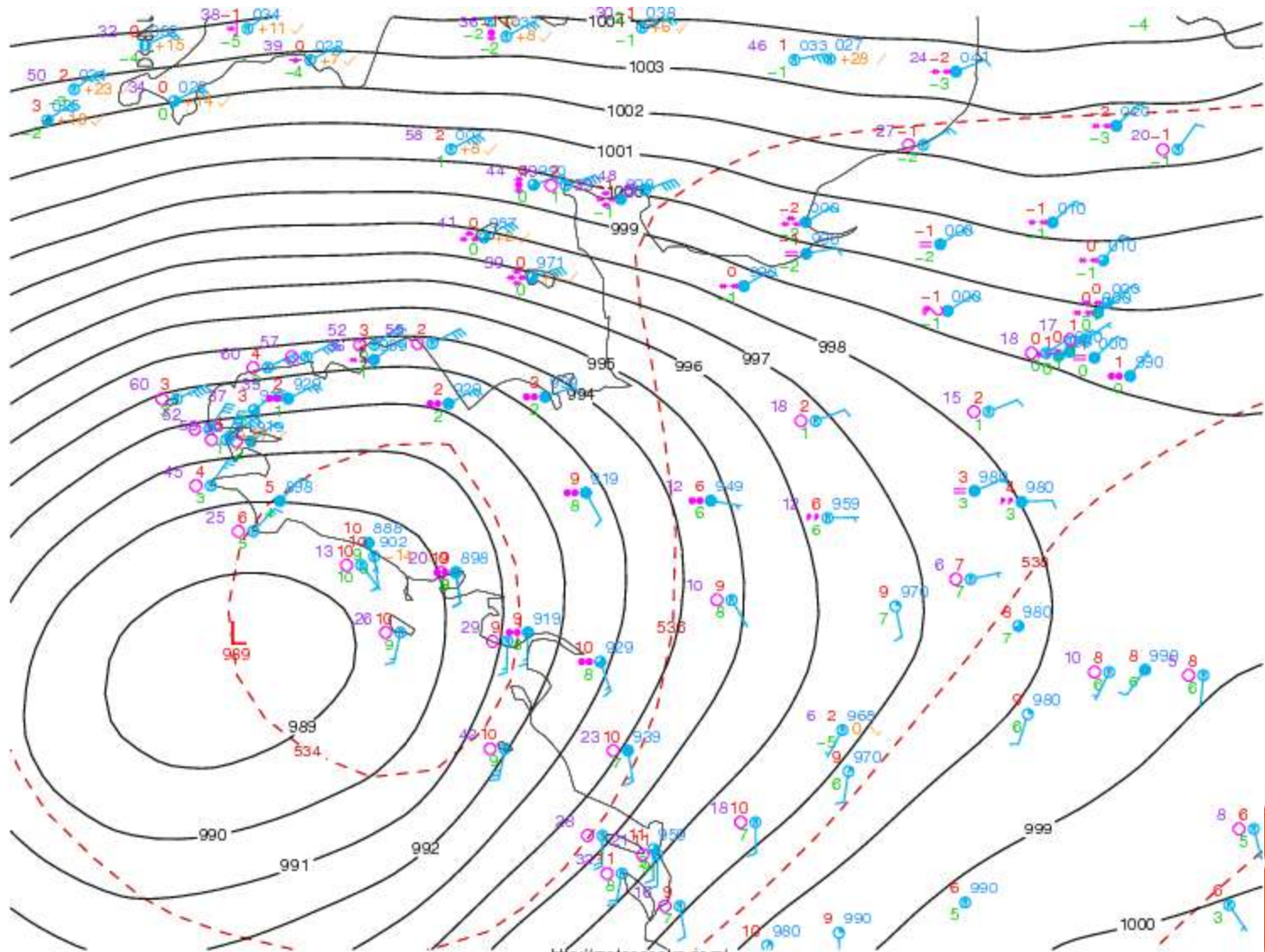


Fronts et isobares pour le 11/03/2013 12hUTC (reseau: 11/03/2013 00hUTC)



Fronts et isobares pour le 12/03/2013 00hUTC (reseau: 11/03/2013 00hUTC)



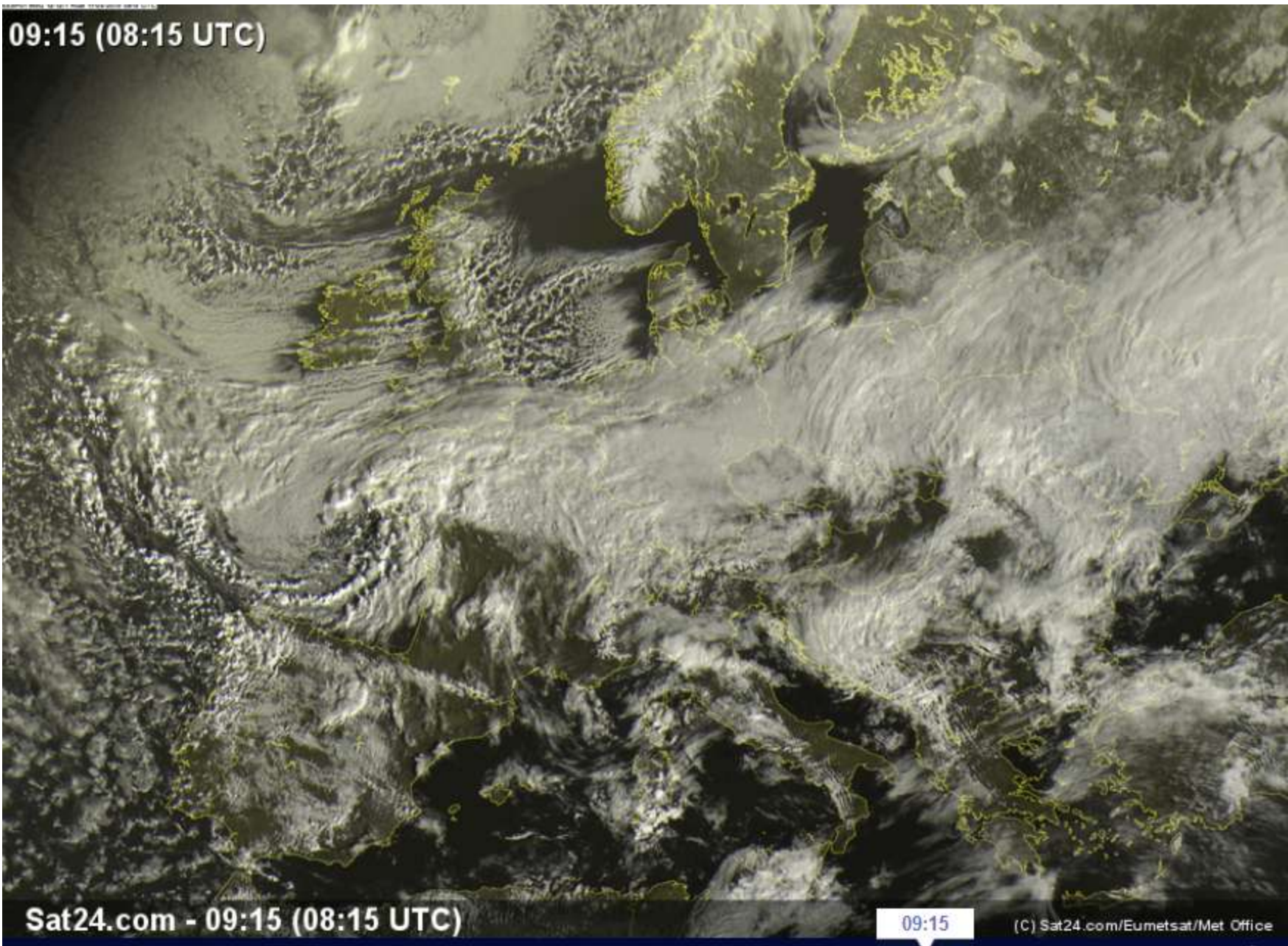


<http://meteocentre.com/>  
 Surface plot stc/130311,0800 / upa/130311,00





09:15 (08:15 UTC)



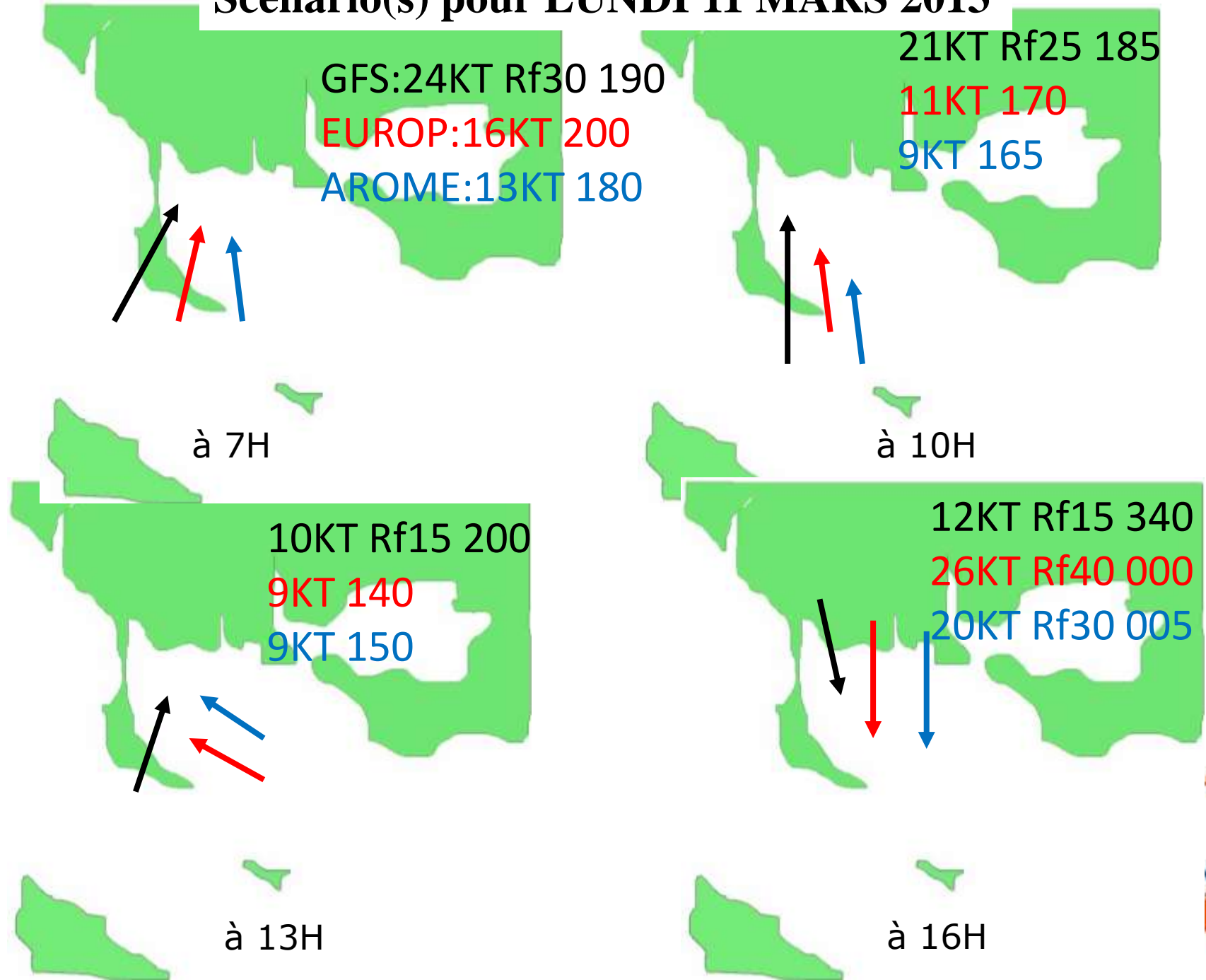
Sat24.com - 09:15 (08:15 UTC)

09:15

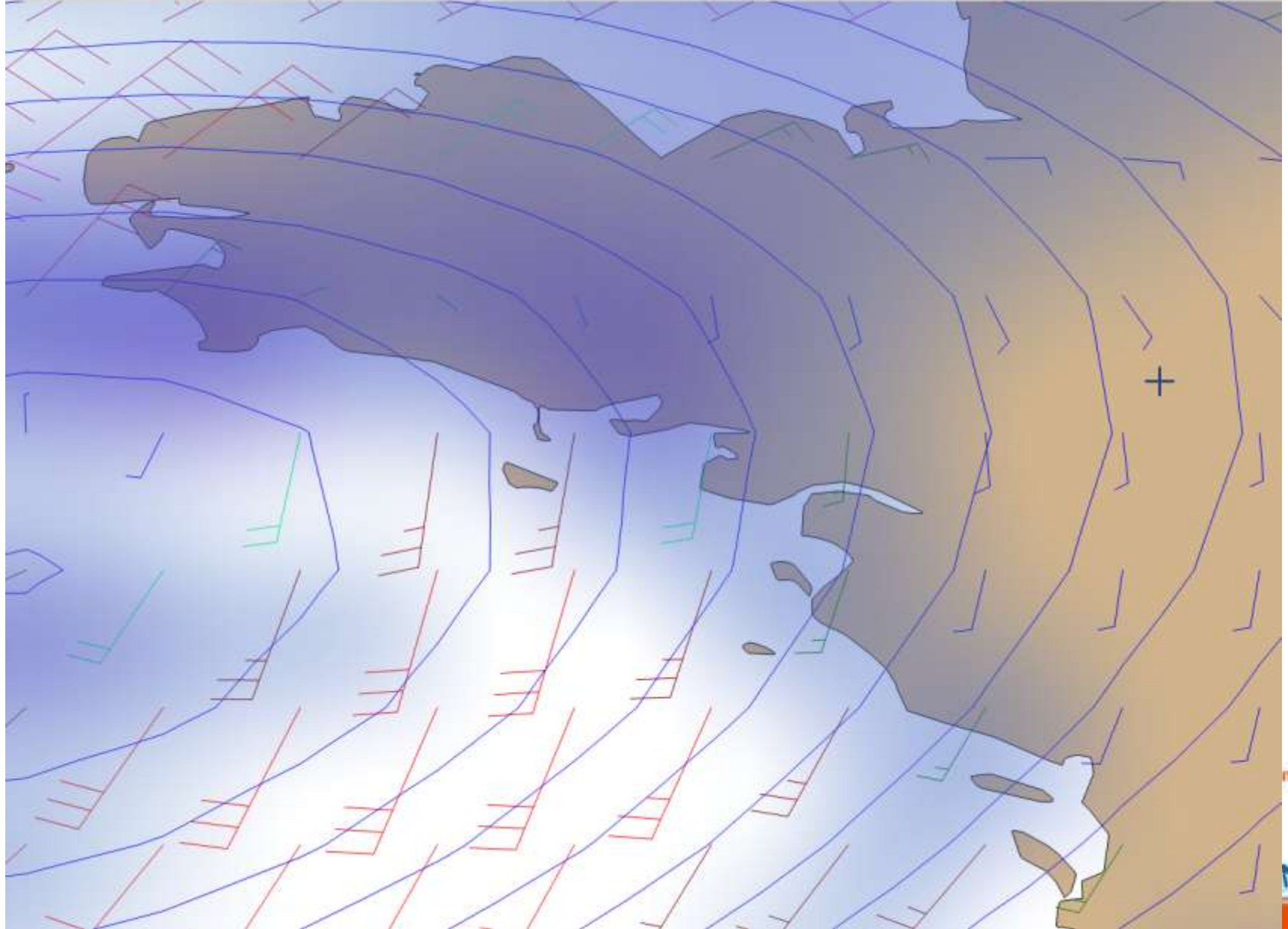
(C) Sat24.com/Eumetsat/Met Office



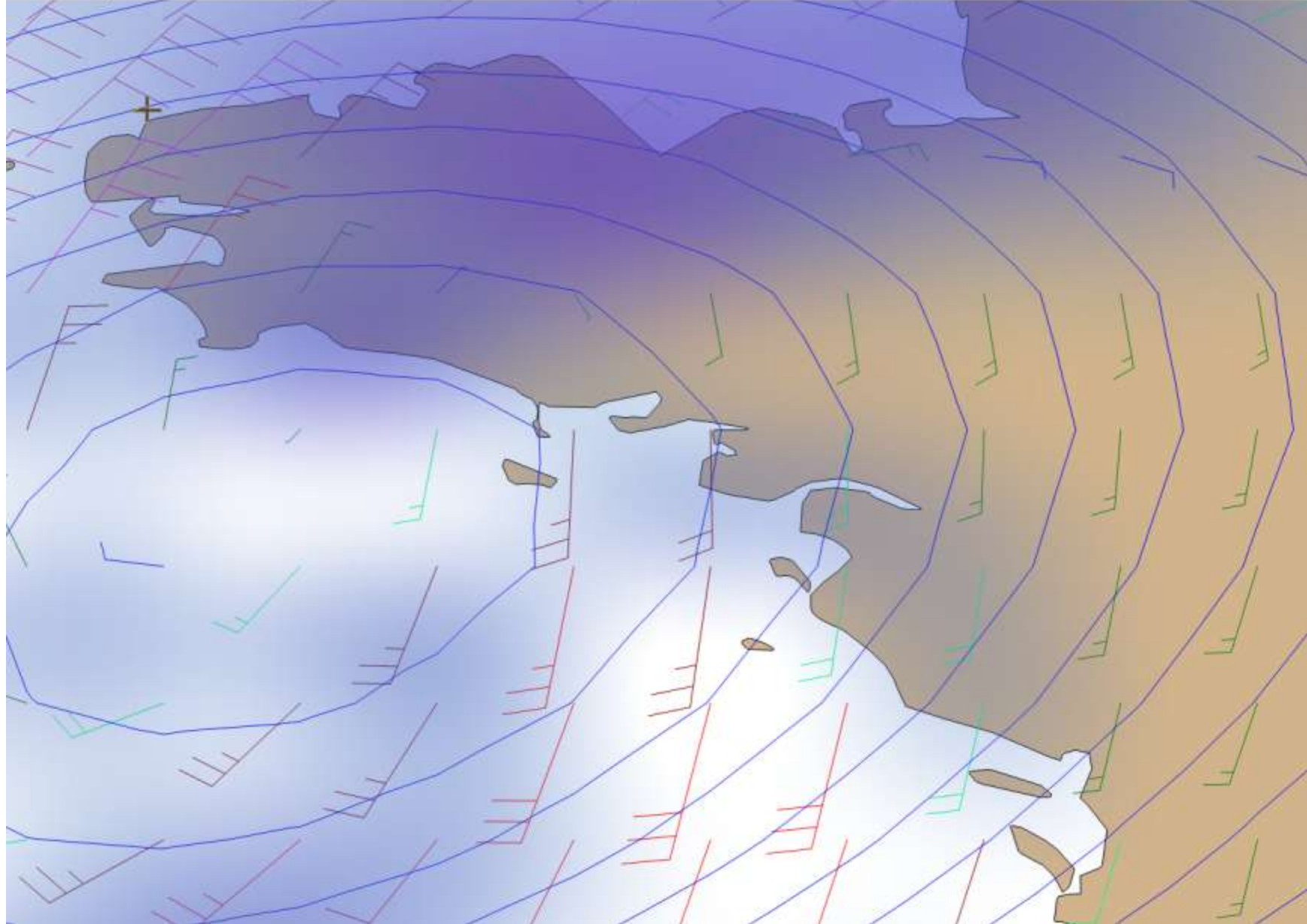
# Scénario(s) pour LUNDI 11 MARS 2013

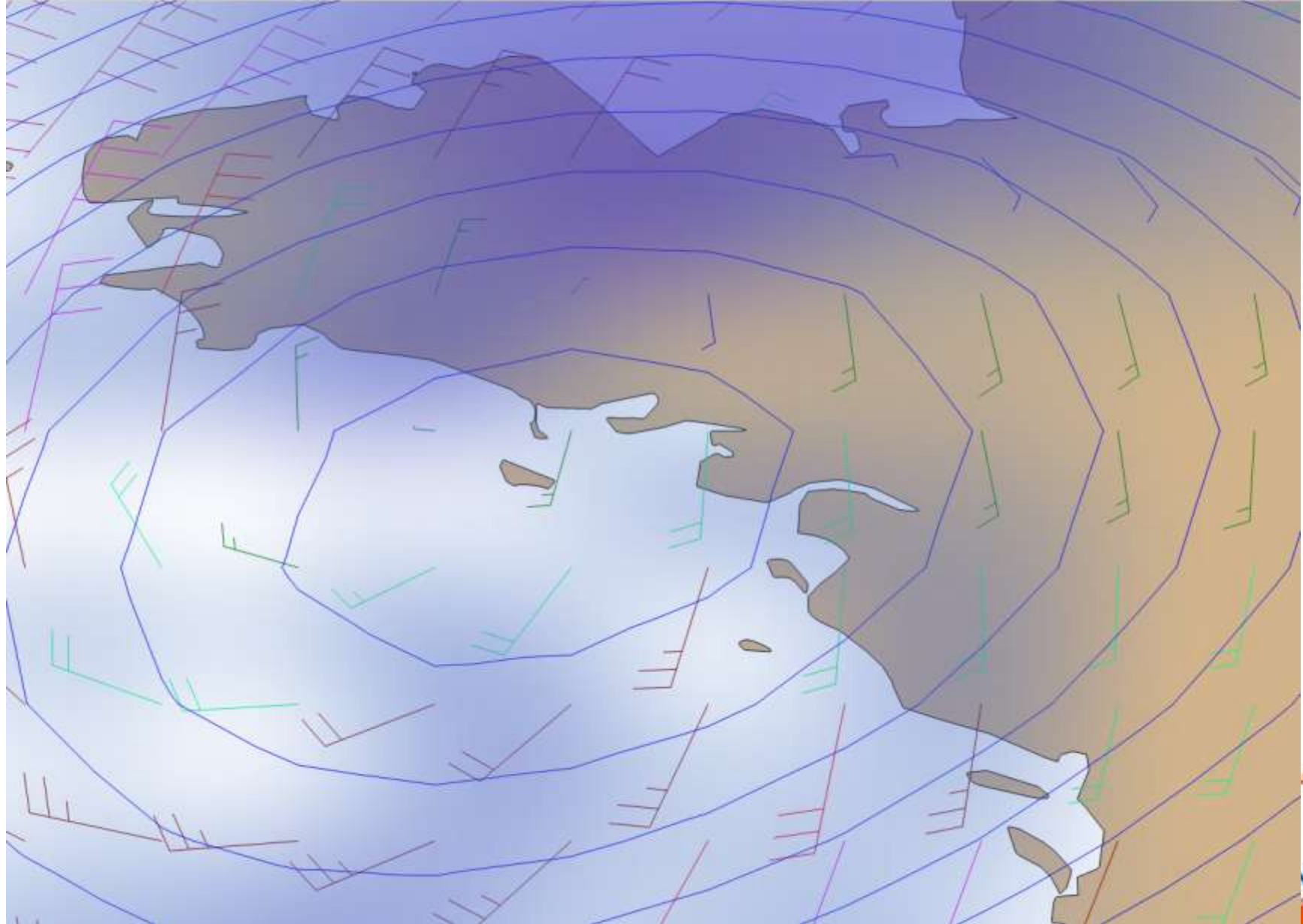






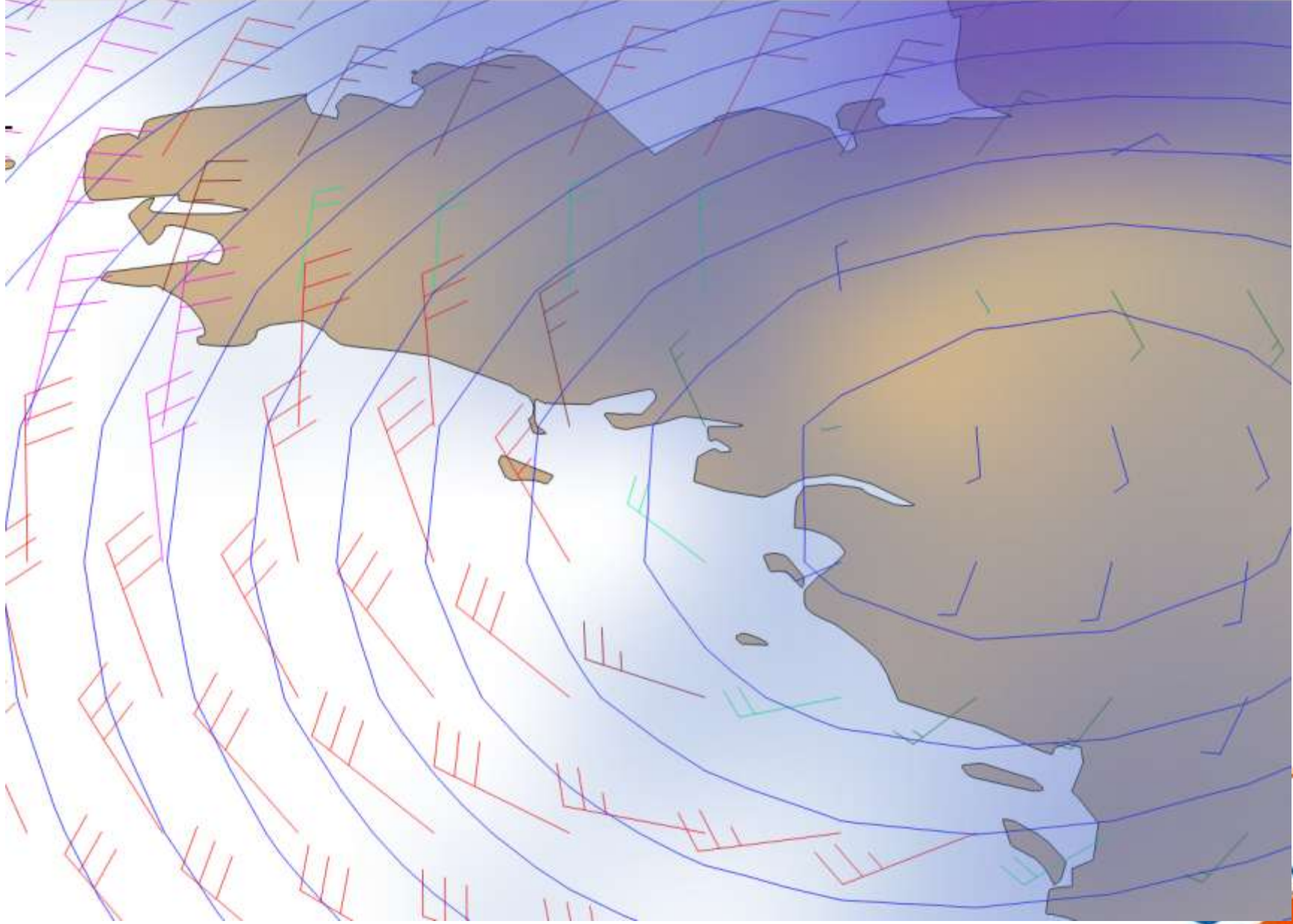




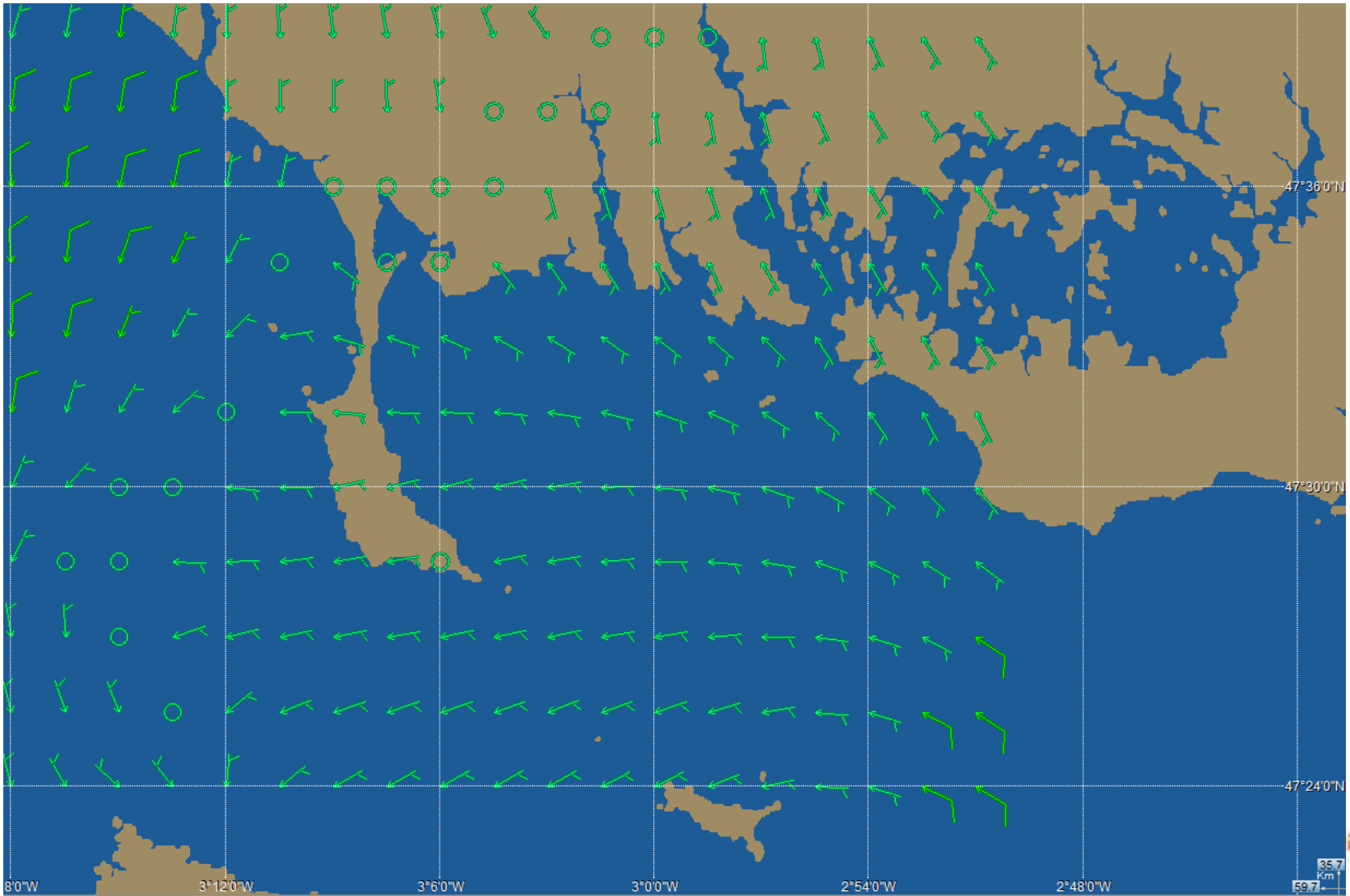






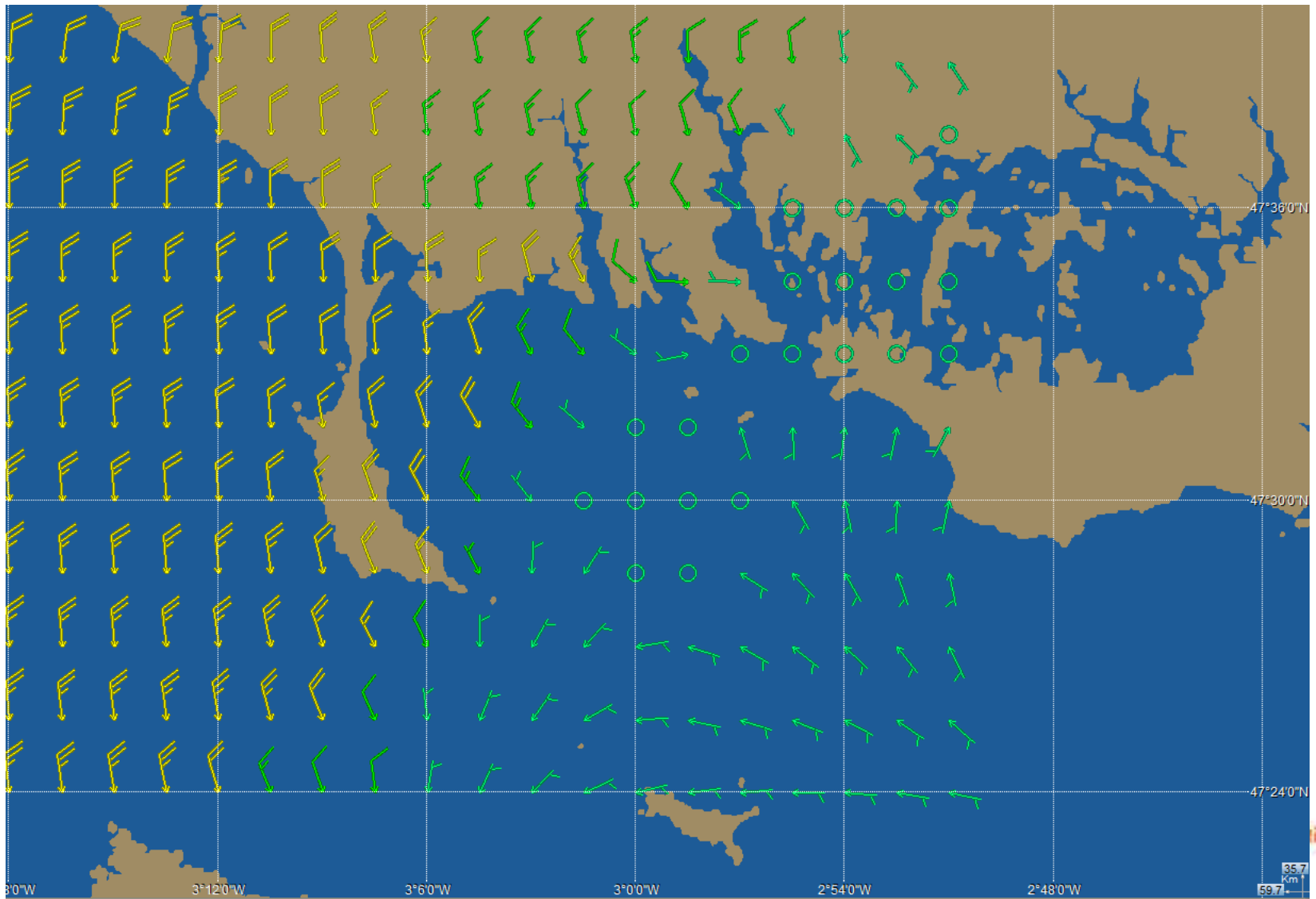






Lun 11 Mars 2013 - 13h UTC / 14h Loc (+13h)

/ Vent moyen à 10 mètres, direction (degrés) et force (noeuds)



Lun 11 Mars 2013 - 14h UTC / 15h Loc (+14h)

/ Vent moyen à 10 mètres, direction (degrés) et force (noeuds)

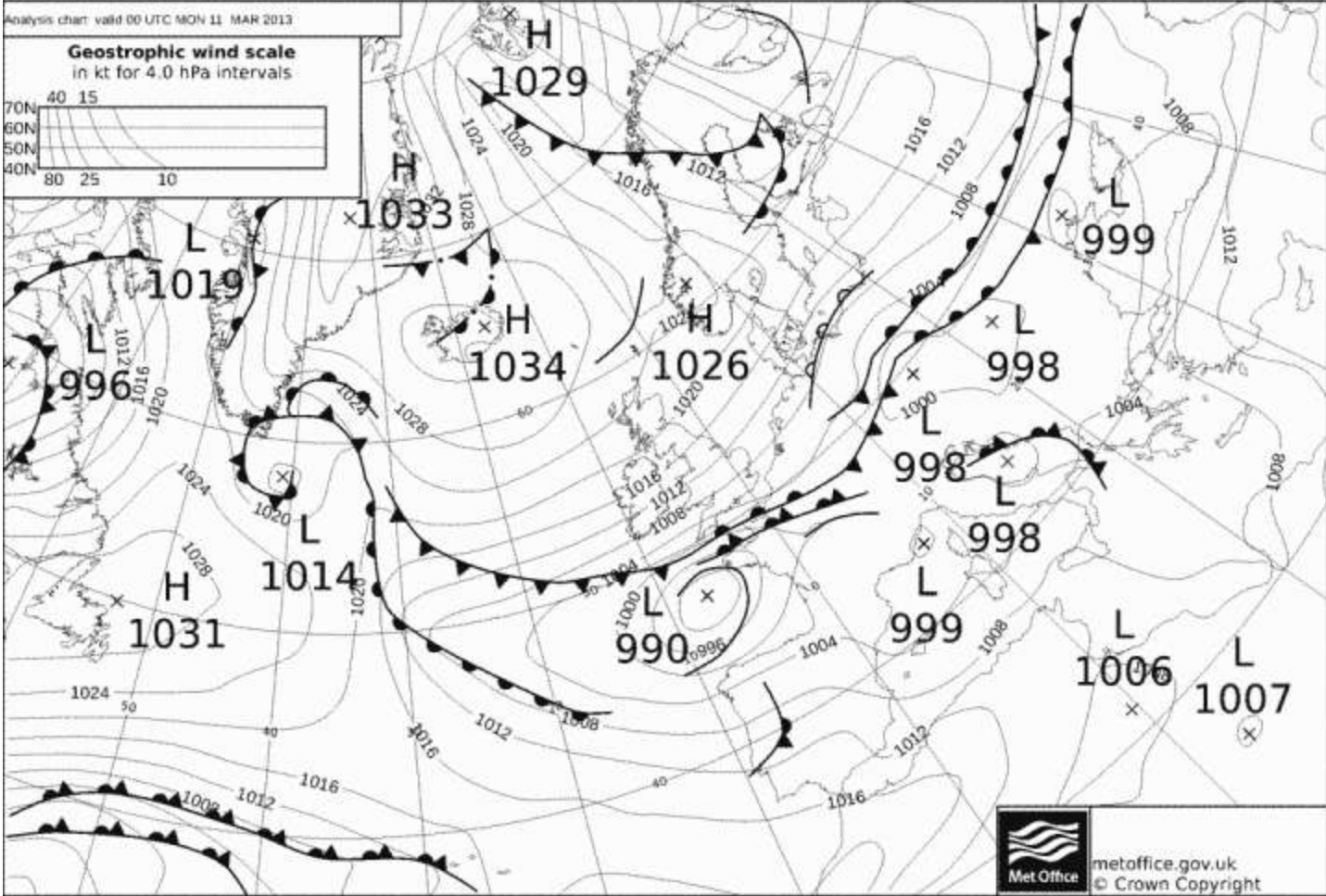
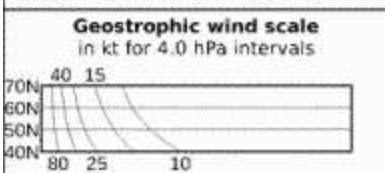
Modèle: Arome



# APERCU DE LA SEMAINE



Analysis chart valid 00 UTC MON 11 MAR 2013

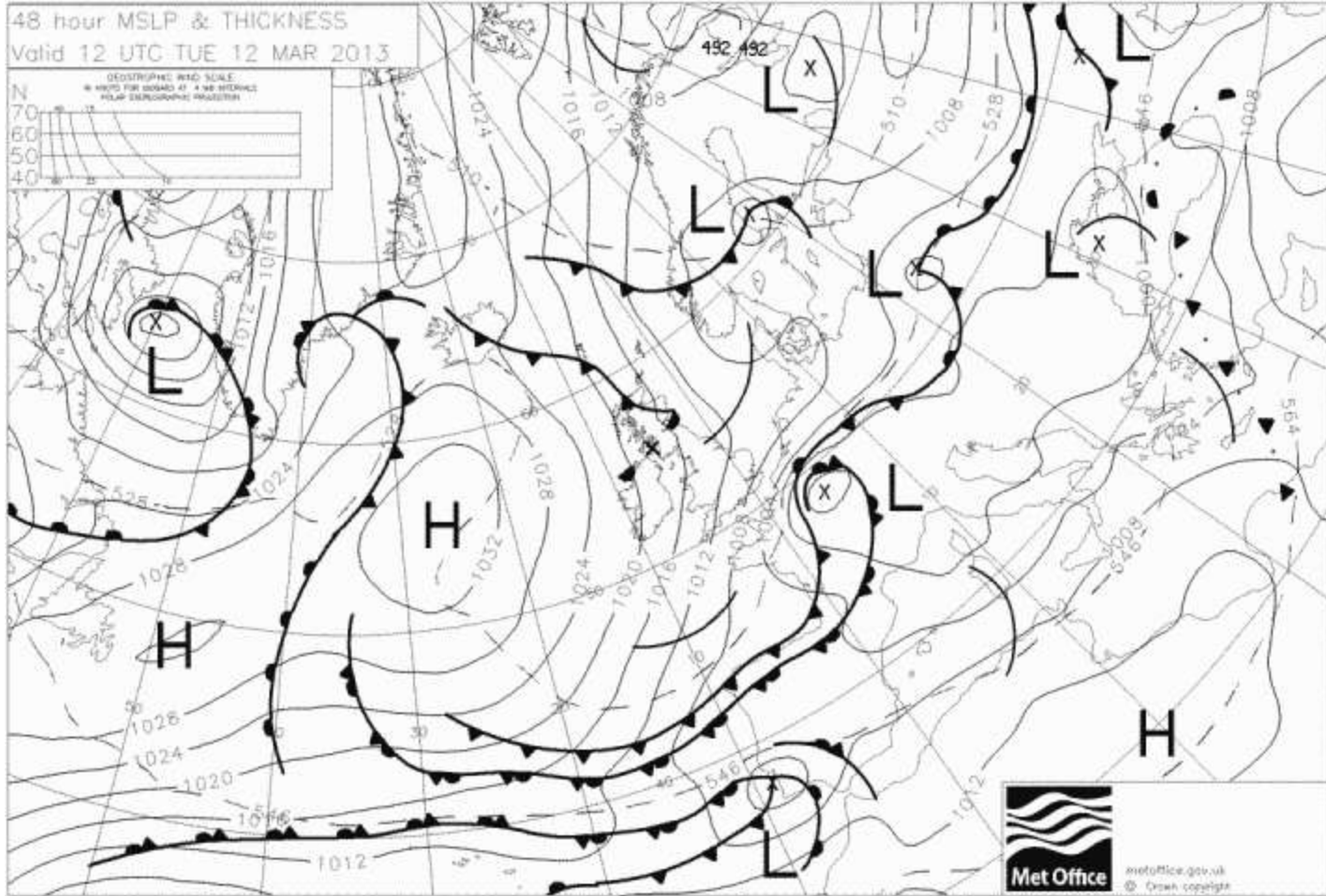
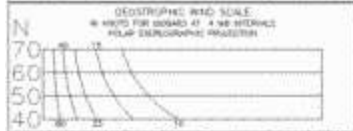


 metoffice.gov.uk  
© Crown Copyright

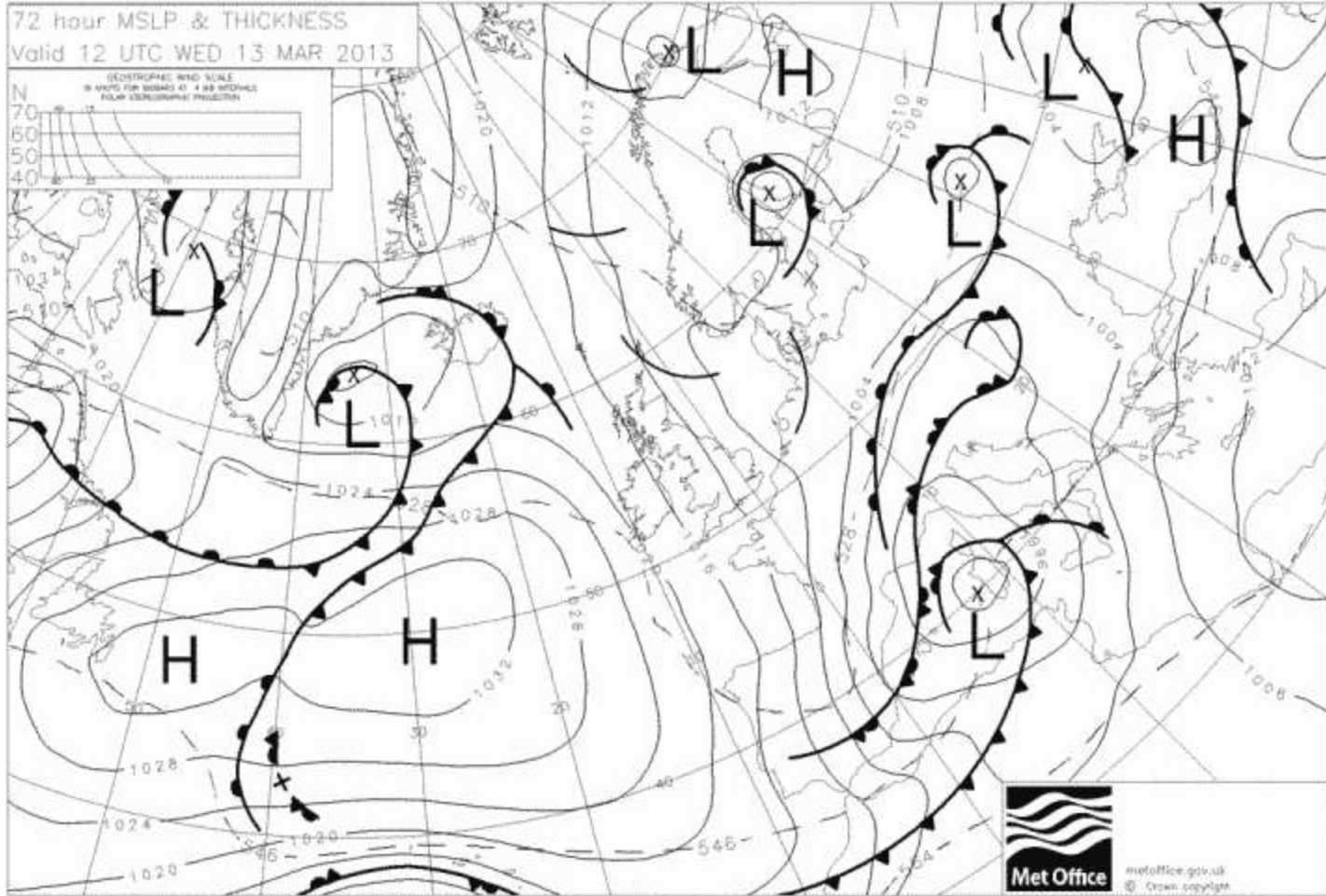
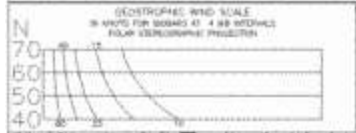




48 hour MSLP & THICKNESS  
Valid 12 UTC TUE 12 MAR 2013



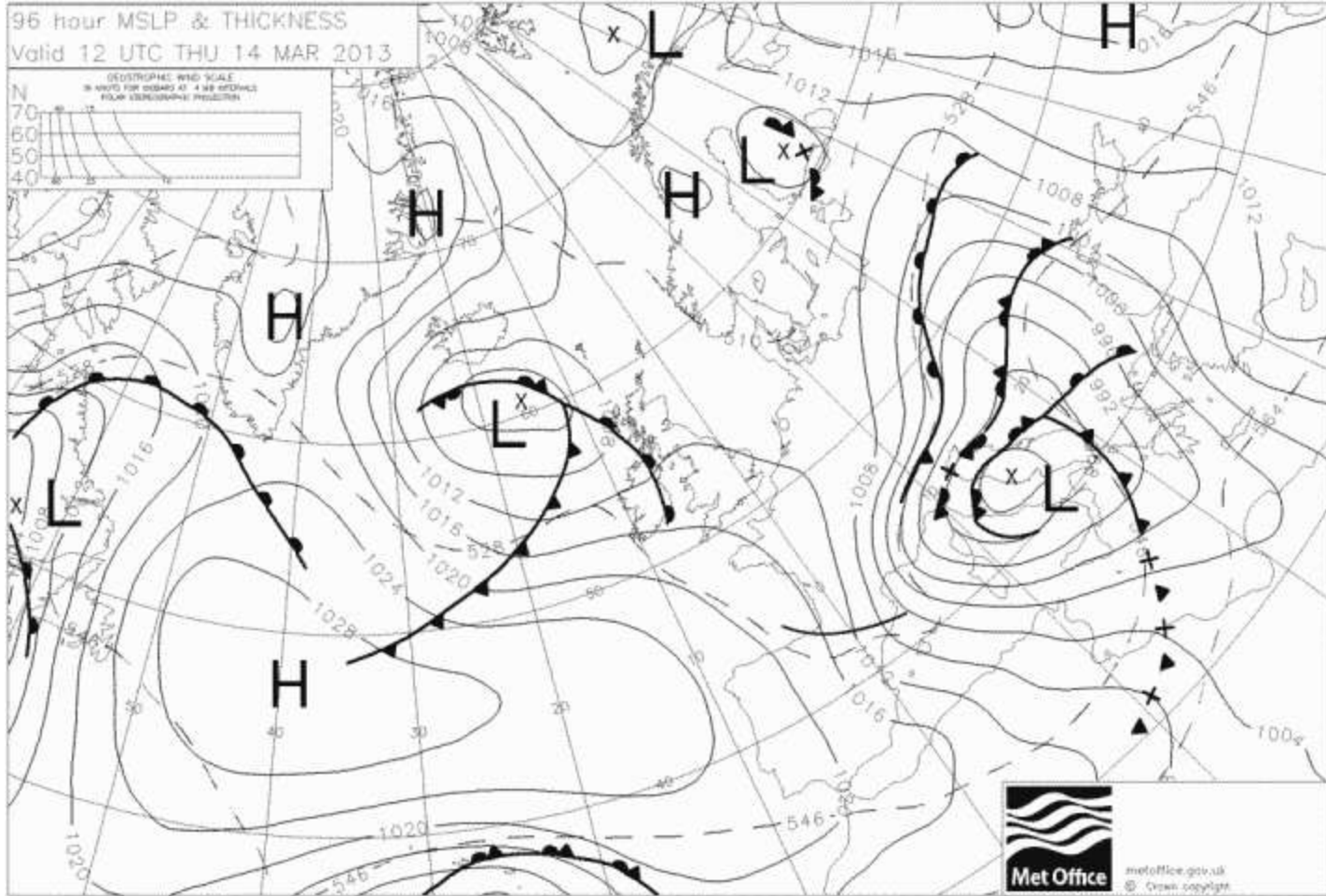
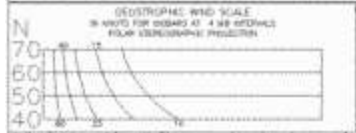
72 hour MSLP & THICKNESS  
Valid 12 UTC WED 13 MAR 2013



metoffice.gov.uk  
© Crown copyright



96 hour MSLP & THICKNESS  
Valid 12 UTC THU 14 MAR 2013

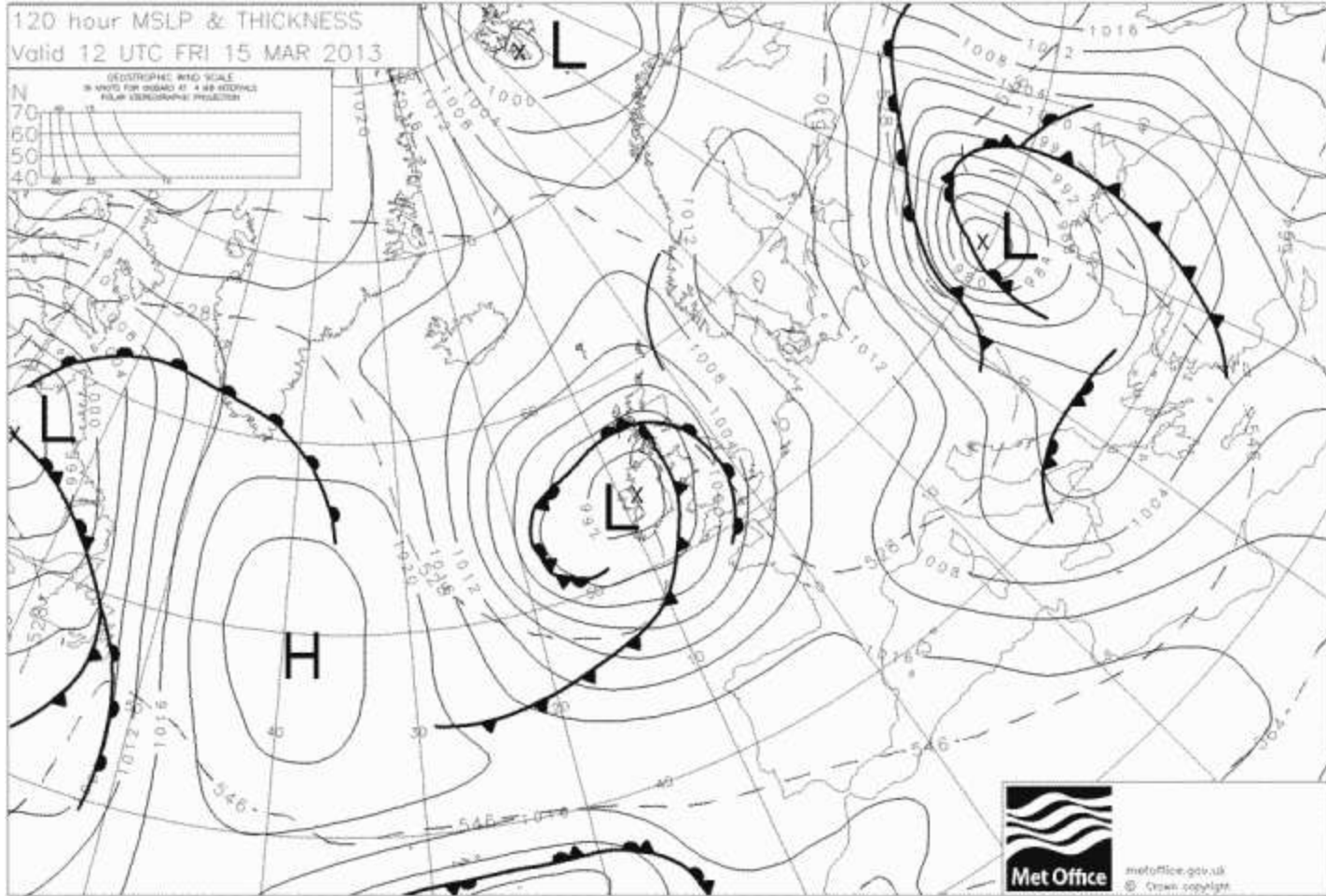
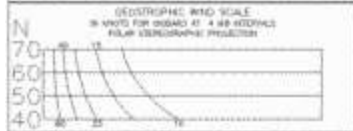


  
metoffice.gov.uk  
© Crown copyright





120 hour MSLP & THICKNESS  
Valid 12 UTC FRI 15 MAR 2013



metoffice.gov.uk  
© Crown copyright





Prévision 2D Carte [Webcams](#) [Observations](#) [Hébergements](#) [Écoles/location](#) [Boutiques](#) [Autres...](#)

<b>GFS</b> 11.03.2013 00 UTC	Lu 11. 04h	Lu 11. 07h	Lu 11. 10h	Lu 11. 13h	Lu 11. 16h	Lu 11. 19h	Lu 11. 22h	Ma 12. 04h	Ma 12. 07h	Ma 12. 10h	Ma 12. 13h	Ma 12. 16h	Ma 12. 19h	Ma 12. 22h	Me 13. 04h	Me 13. 07h	Me 13. 10h	Me 13. 13h	Me 13. 16h	Me 13. 19h	Me 13. 22h	Je 14. 04h	Je 14. 07h	Je 14. 10h	Je 14. 13h	Je 14. 16h	Je 14. 19h			
Vitesse du vent (noeuds)	22	24	21	10	12	26	26	21	20	21	21	23	24	24	23	22	19	18	15	14	13	12	12	11	9	10	10			
Rafales (noeuds)	29	30	25	15	15	33	36	29	26	27	26	30	33	35	34	33	27	23	19	19	16	14	14	14	12	14	13			
Direction du vent	↗	↗	↗	↗	↘	↘	↘	↘	↘	↘	↘	↘	↘	↘	↘	↘	↘	↘	↘	↘	↘	↘	↘	↘	↘	↘	↘			
Vagues (m)	4.4	4.4	4.3	3.9	3.3	2.8	2.8	2.8	2.5	2.2	2.1	2.2	2.5	2.7	3	3	2.8	2.4	2	1.7	1.6	1.4	1.4	1.3	1.2	1	1			
Période des vagues (s)	11	11	11	10	10	10	6	6	7	7	6	6	6	6	7	7	7	7	6	6	6	5	5	5	5	6	4			
Direction des vagues	↗	↗	↗	↗	↗	↗	↘	↘	↘	↘	↘	↘	↘	↘	↘	↘	↘	↘	↘	↘	↘	↘	↘	↘	↘	↘	↘			
*Température (°C)	11	11	11	12	10	6	4	4	4	4	4	3	3	2	3	3	5	6	7	6	5	4	4	5	7	8	8			
*Isotherme 0° (m)	1.7k	1.7k	1.8k	1.8k	1.8k	1.3k	830	340	350	350	370	260	190	160	250	360	520	600	670	630	610	630	590	550	670	810	840			
Couverture nuageuse (%) haute / moyenne / basse	86 11 72	92 38 49	99 72 65	99 61 49	68 6 21	45 18 38	32 35 55	17 9 84	9 89	84	92	99	99	100	46	27	34	53	56	50								11	14	8
*Precip. (mm/3h)	6.1	2.3	3.5	4.5	1.6	0.4				0.3	1.1	2.1	1.9	1.3			0.3													
Note Windguru	★ ★	★ ★	★ ★		★	★	★	★	★	★	★	★	★	★	★	★	★	★	★	★	★	★	★	★	★	★	★	★		

<b>GFS</b> 11.03.2013 00 UTC	Je 14. 22h	Ve 15. 04h	Ve 15. 07h	Ve 15. 10h	Ve 15. 13h	Ve 15. 16h	Ve 15. 19h	Ve 15. 22h	Sa 16. 04h	Sa 16. 07h	Sa 16. 10h	Sa 16. 13h	Sa 16. 16h	Sa 16. 19h	Sa 16. 22h	Di 17. 04h	Di 17. 07h	Di 17. 10h	Di 17. 13h	Di 17. 16h	Di 17. 19h	Di 17. 22h	Lu 18. 04h	Lu 18. 07h	Lu 18. 10h	Lu 18. 13h
Vitesse du vent (noeuds)	5	8	9	14	19	21	22	23	26	28	27	20	11	12	15	15	18	19	16	14	13	13	20	18	17	19
Rafales (noeuds)	6	12	13	17	24	28	29	30	34	37	35	26	14	15	19	20	24	24	20	17	16	17	24	23	21	23
Direction du vent	↘	↗	↗	↗	↗	↗	↗	↗	↗	↗	↗	↗	↗	↗	↗	↗	↗	↗	↗	↗	↗	↗	↗	↗	↗	↗
Vagues (m)	0.9	0.8	0.9	1.1	1.4	1.8	2.2	2.6	3.4	3.6	3.8	3.7	3.5	3.2	3	2.8	2.8	2.8	2.8	2.7	2.6	2.6	3.2	3.2	3.1	3
Période des vagues (s)	4	9	4	4	5	5	6	7	8	8	8	8	8	8	8	8	8	10	9	9	8	7	8	8	8	8
Direction des vagues	↘	↘	↘	↘	↘	↘	↘	↘	↘	↘	↘	↘	↘	↘	↘	↘	↘	↘	↘	↘	↘	↘	↘	↘	↘	↘
*Température (°C)	7	8	9	10	11	10	10	10	10	10	10	9	9	9	9	9	9	10	10	10	10	9	9	9	10	10
*Isotherme 0° (m)	840	1k	1.1k	1.1k	1.2k	1.2k	1.2k	1.3k	1.2k	1.2k	1.2k	1.2k	1.2k	1.1k	1.1k	990	1k	1.1k	1.2k	1.2k	1.2k	1.2k	1.1k	1k	1.1k	1.1k
Couverture nuageuse (%) haute / moyenne / basse		5 40 20	19 60 33	61 76 35	47 73 25	23 40 44	51 37 15	82 75 49	64 99 63	73 99 76	79 99 96	73 99 98	96 100 90	96 99 65	94 88 16	19	9		5 34	37 61	52 50	88 22	79 94	16 94	8 94	97 97
*Precip. (mm/3h)			0.9	0.3	0.3	0.6		0.8	2	4.6	3.1	7.4	4.2	0.4				0.3	2.5	2.3	1.1	1.4	2.7	2.7	3.2	3.1



	lundi 11							mardi 12							mercredi 13				jeudi 14							
Heure loc.	04h	07h	10h	13h	16h	19h	22h	01h	04h	07h	10h	13h	16h	19h	22h	01h	07h	13h	19h	01h	07h	13h	19h			
Nébulosité	●	●	●	●	◐	◐	◐	●	◐	◐	◐	◐	◐	●	●	●	◐	◐	◐	◐	◐	◐	◐			
Temps Sensible	☁	☁	☁	☁	☁	☁	☁	☁	☁	☁	☁	☁	☁	☁	☁	☁	☁	☁	☁	☁	☁	☁	☁			
Température (°C)	10	9	9	9	7	4	2	2	2	2	2	3	4	3	1	1	1	1	1	5	4	2	0	7	6	
Température du point de rosée (°C)	8	7	7	9	6	3	1	1	1	2	0	1	-1	0	0	0	0	1	1	-2	-3	-2	1	0	0	3
T Max (°C)						10								5					6						8	
T Min (°C)			3							1										0						-1
Limite Pluie Neige (m)	1100	1200	1200	1200	1300	1200	400	0	0	0	0	100	0	0	0	0		300	300					300	500	
ISO 0°C (m)	1400	1500	1500	1500	1600	1500	600	100	200	200	300	400	300	100	0	0	100	600	600	500	500	600	800			
Humidité (%)	90	90	90	100	90	90	90	90	80	80	80	70	70	90	90	80	70	60	70	90	90	60	80			
Humidité Max (%)				100								90						90					95			
Humidité Min (%)				80								60						50					50			
Direction (°)	180	180	180	180	335	360	20	360	360	360	360	360	360	20	45	45	45	20	360	335	360	335	270			
Vent (kt)	17	17	16	12	14	25	25	21	19	17	16	16	16	14	16	17	19	19	17	10	12	10	12			
Rafales (kt)						35	41	35	29	29							29									
Pluie (mm)	2,2	2,2	2,2	2,2	2,2	0,5	0,5	0	0	0	0	0,3	0	0	0	0	0	0,6	0,6	0	0	0,6	0,6			
Précipitations sur 24H (mm)						8,7								1,8					1,2				1,2			

