

# Lundi 11 mars 2013:

## passage d'un minimum dépressionnaire en baie de Quiberon

- [OBS](#)
- [Cartes iso](#)
- [Enregistrements de vent](#)
- [Emagrammes](#)
- [Cartes sat, radar](#)
- [Prévis](#)

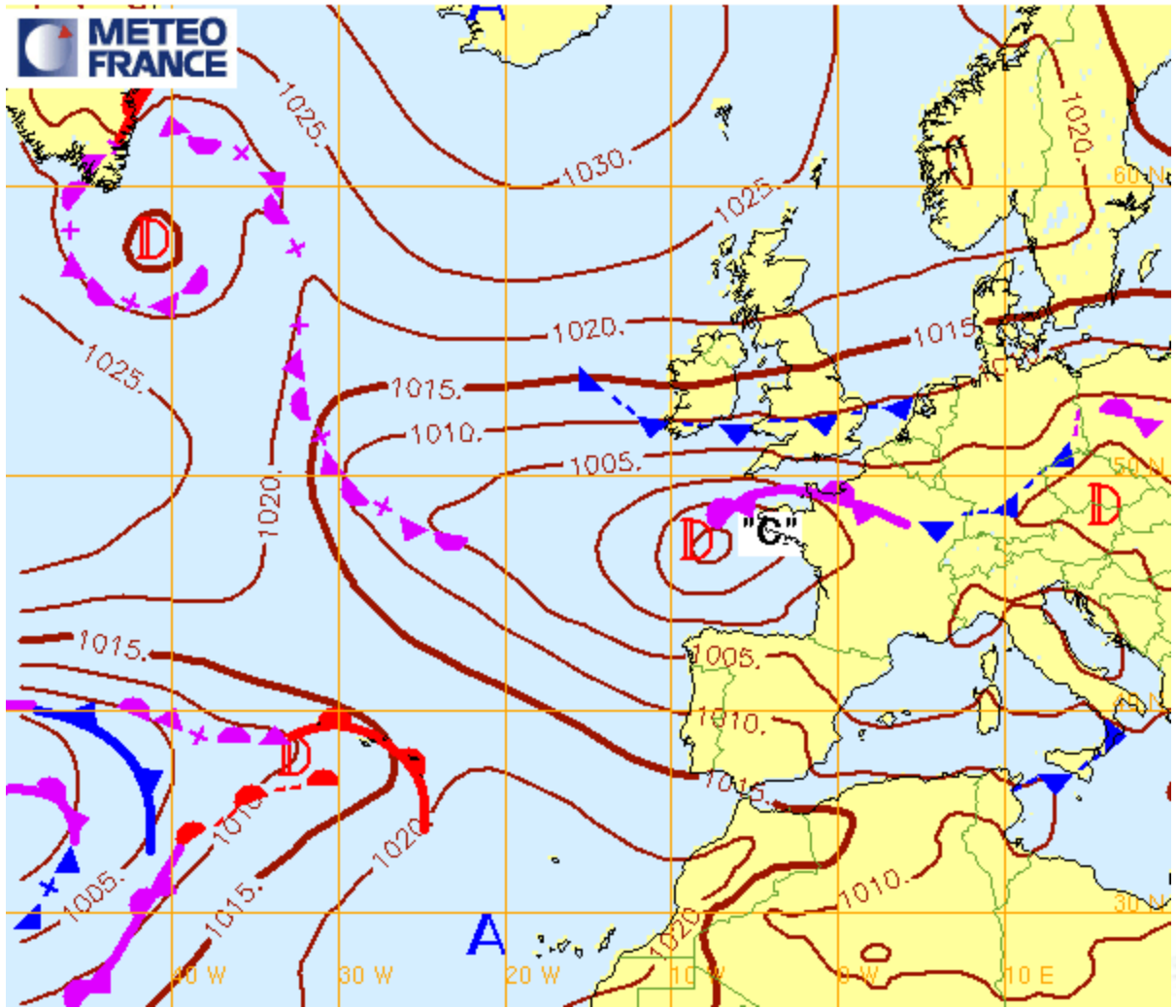


# Observations

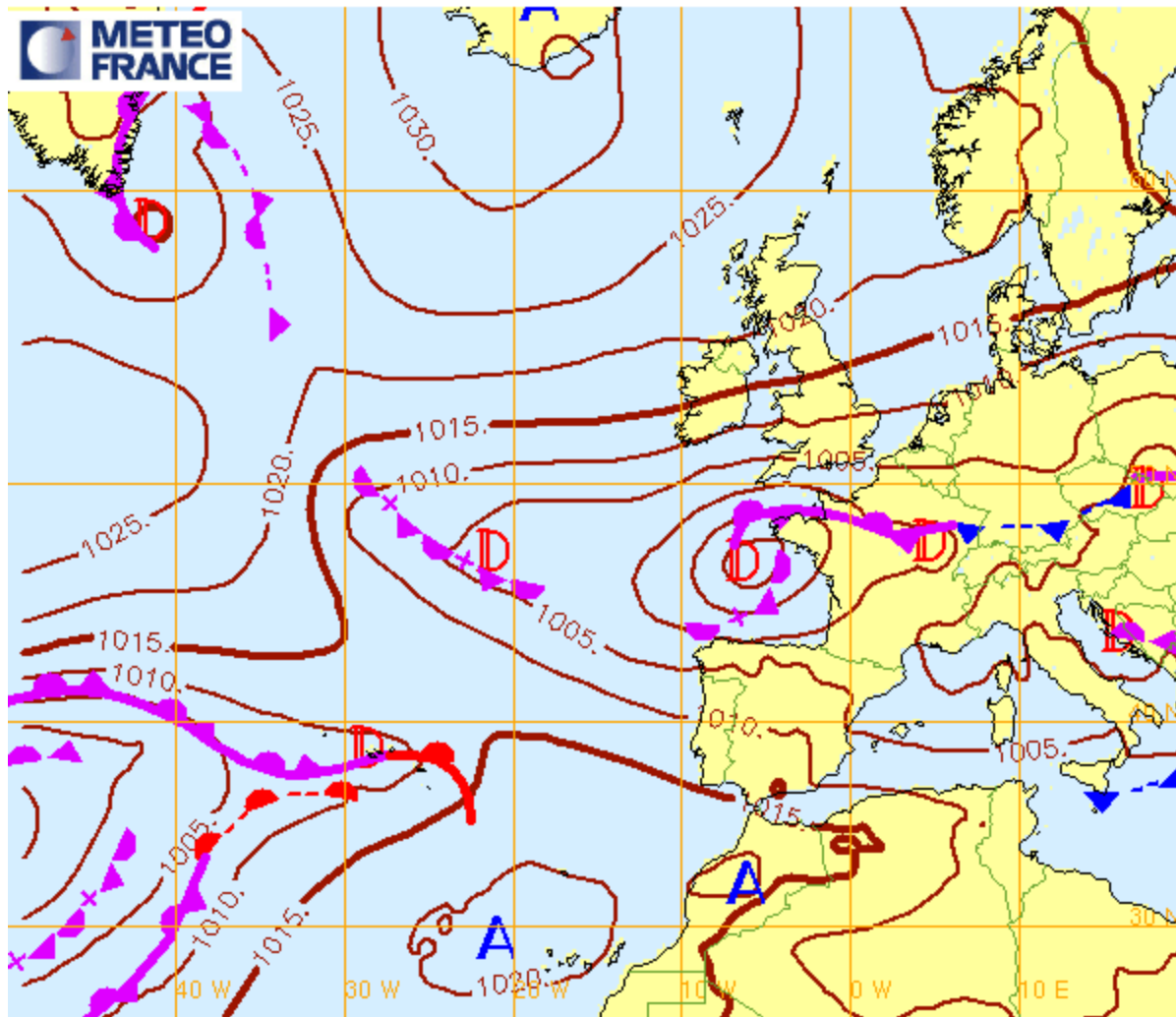


- Brusque rotation du sud au nord vers 13H30 devant l'ENVSN
- L'entrée du vent de nord se fait un peu plus tôt que prévu par les modèles: 13H30 au lieu de 14H30 pour Arôme
- Entrée brusque avec rapide renforcement du vent comme prévu, jusqu'à 18/22nds l'après-midi, raf 25/28nds
- Le vent mollit comme prévu avant l'entrée du nord autour de 5nds, mais avec une évolution droite 140 → 180, alors que les modèles prévoyaient plutôt de la gauche
- Signe visible: une trouée bleue ds le ciel, puis on voit une masse nuageuse sombre qui envahit Penthièvre par le nord vers 13H

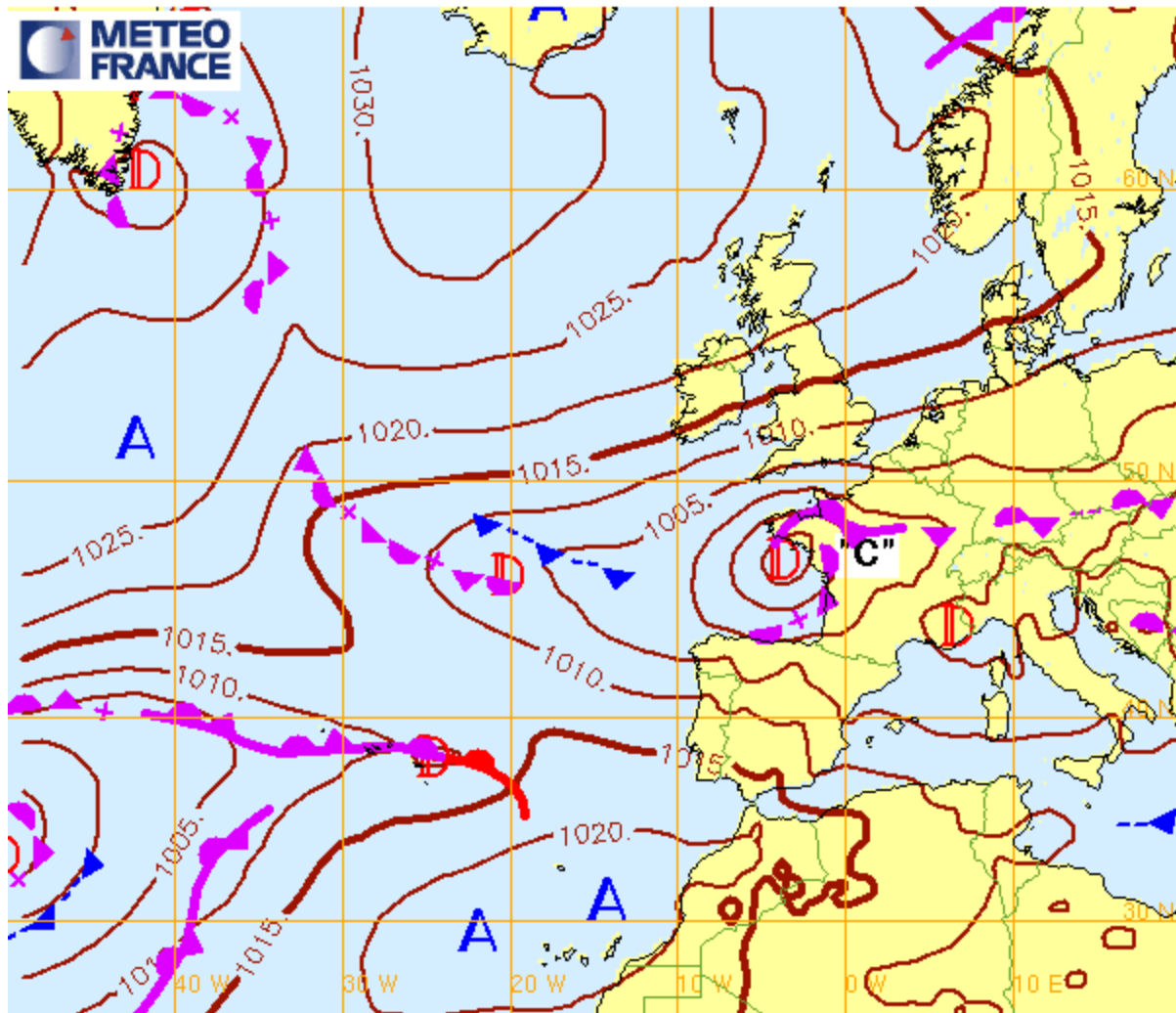
Analyse Fronts et isobares du 11/03/2013 00hUTC (reseau: 11/03/2013 00hUTC)



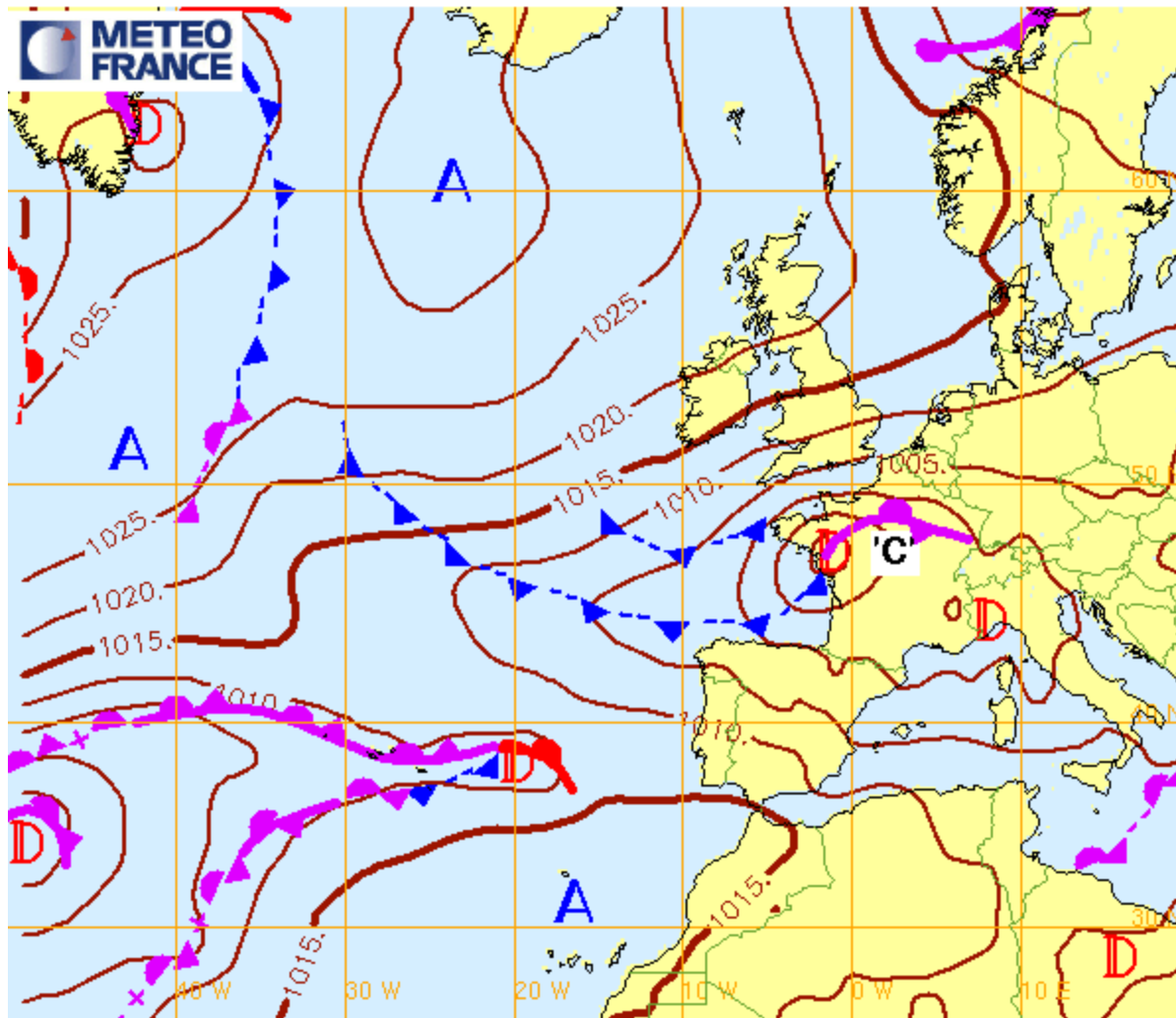
Analyse Fronts et isobares du 11/03/2013 06hUTC (reseau: 11/03/2013 06hUTC)



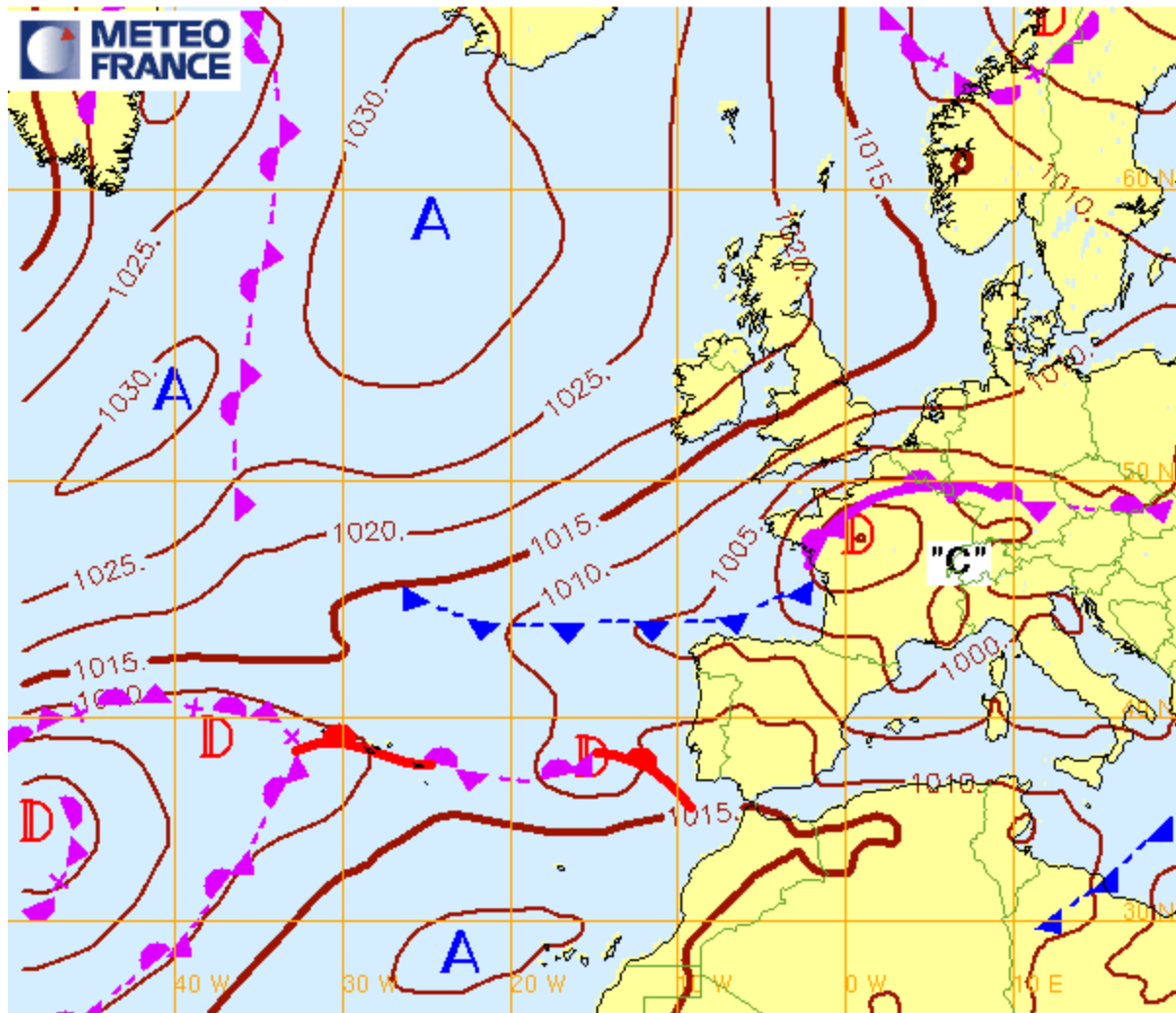
Analyse Fronts et isobares du 11/03/2013 12hUTC (reseau: 11/03/2013 12hUTC)

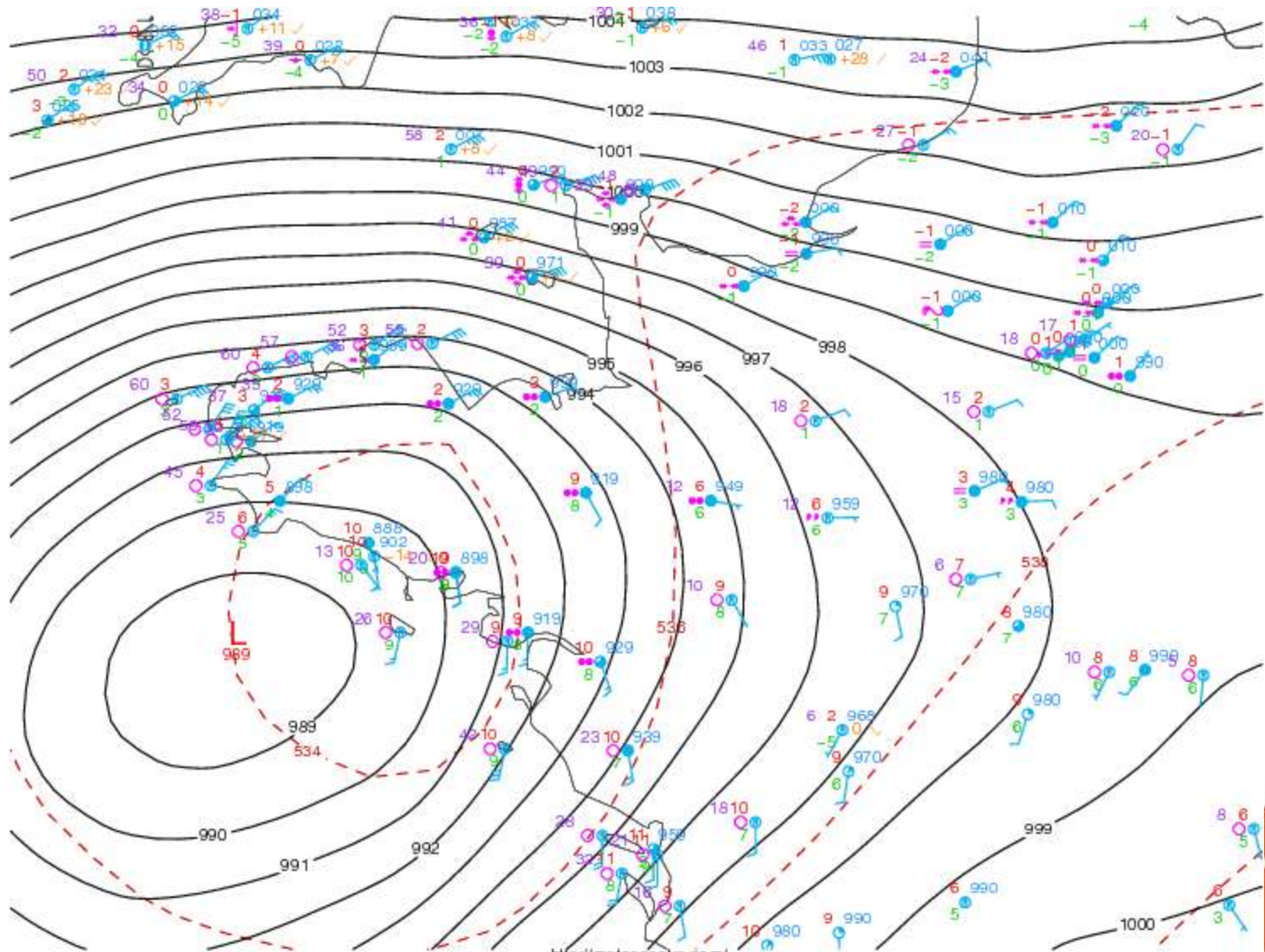


Analyse Fronts et isobares du 11/03/2013 18hUTC (reseau: 11/03/2013 18hUTC)



Fronts et isobares pour le 12/03/2013 00hUTC (reseau: 11/03/2013 00hUTC)

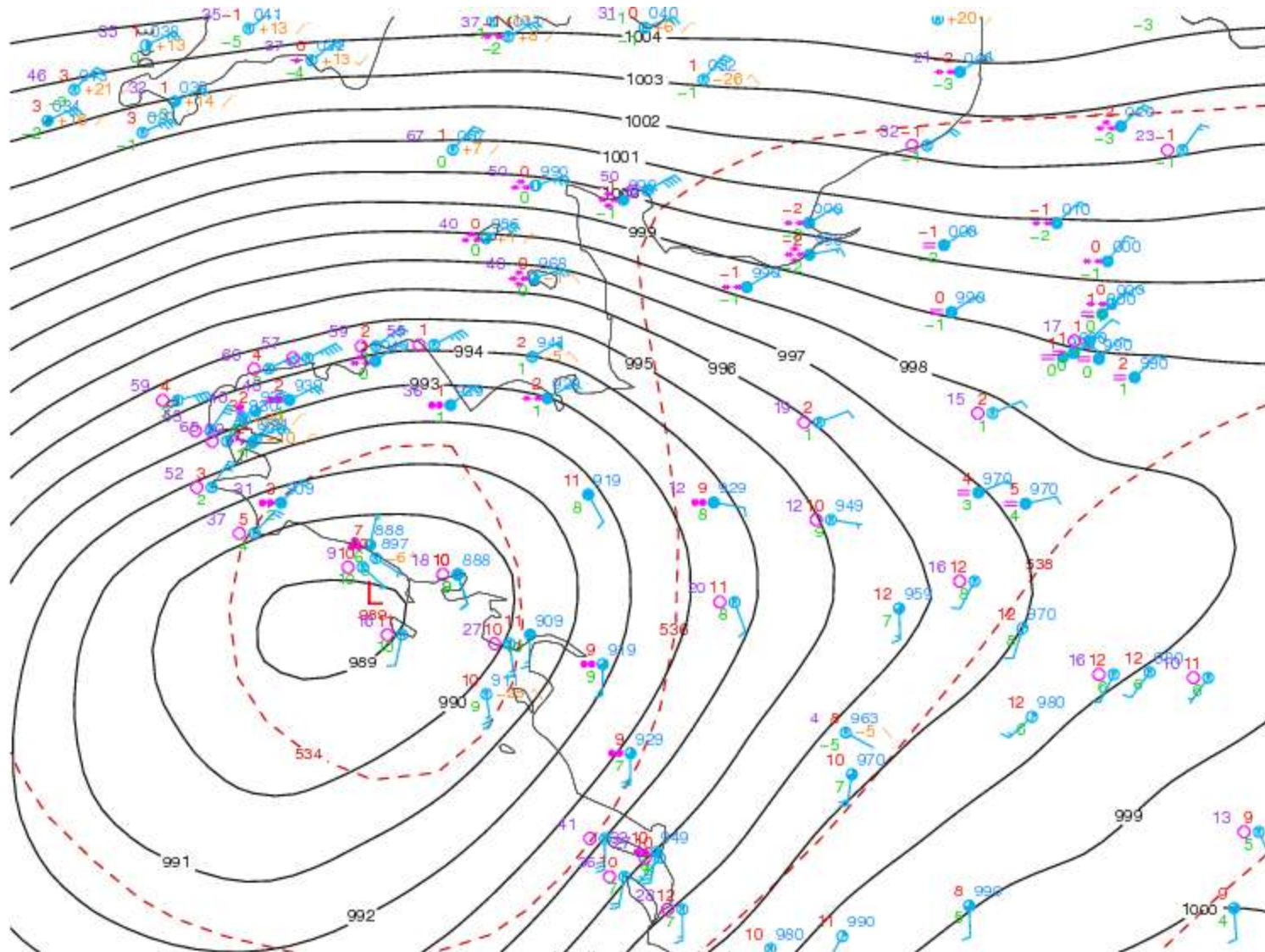




<http://meteocentre.com/>  
 Surface plot stc/130311,0800 / upa/130311,00

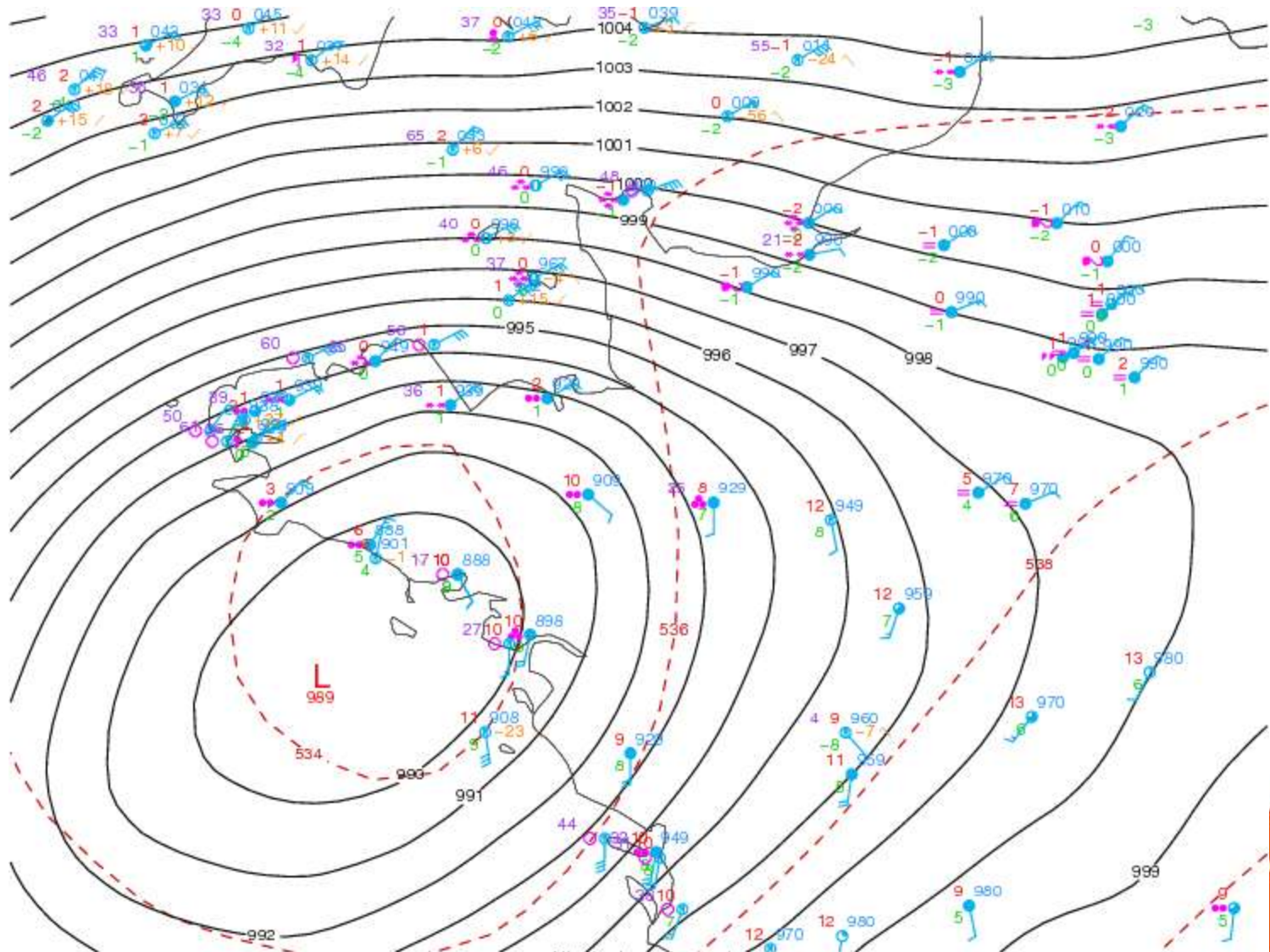






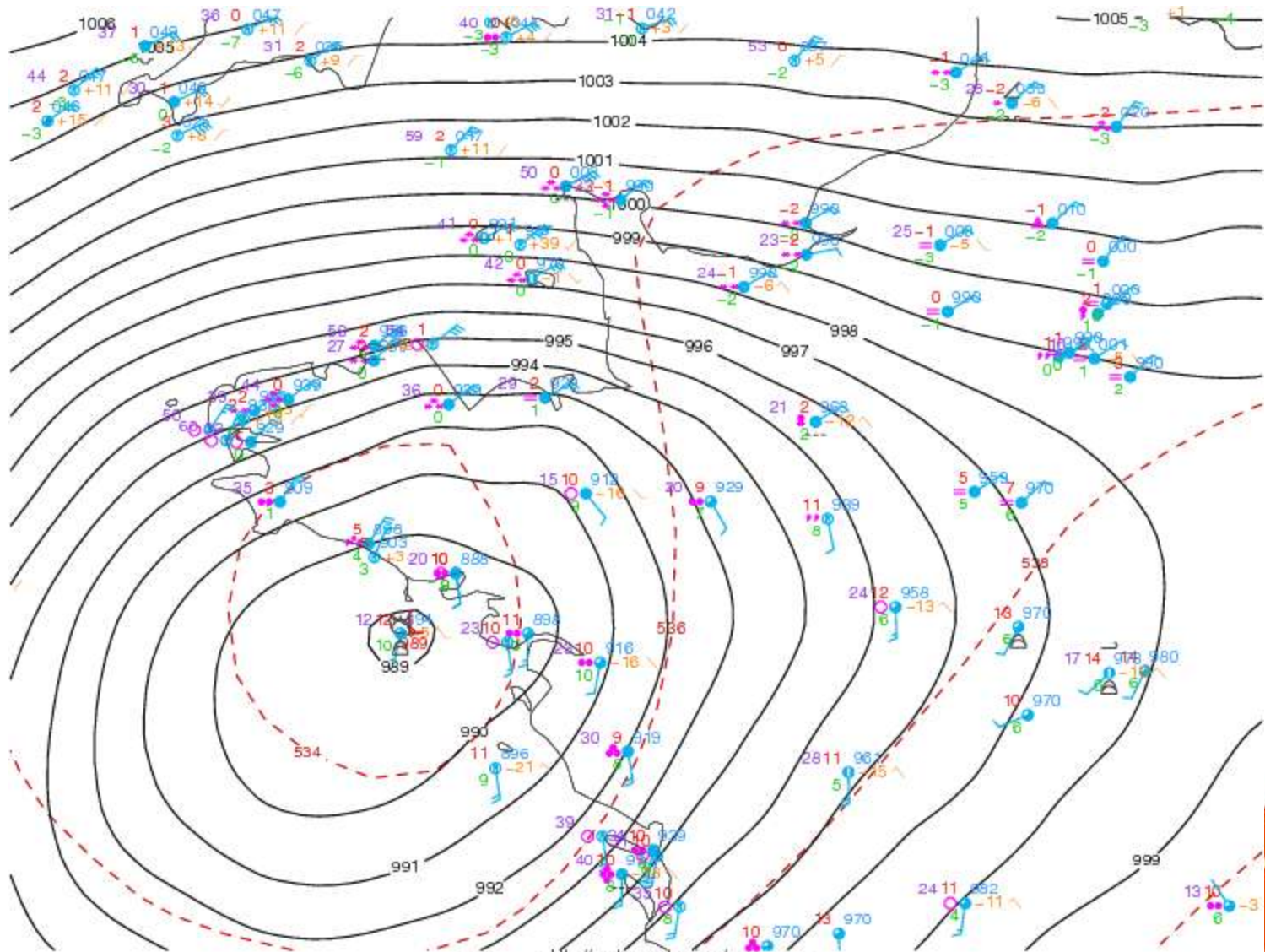
<http://meteocentre.com/>  
 Surface plot stc/130311/1000 / upa/130311.00





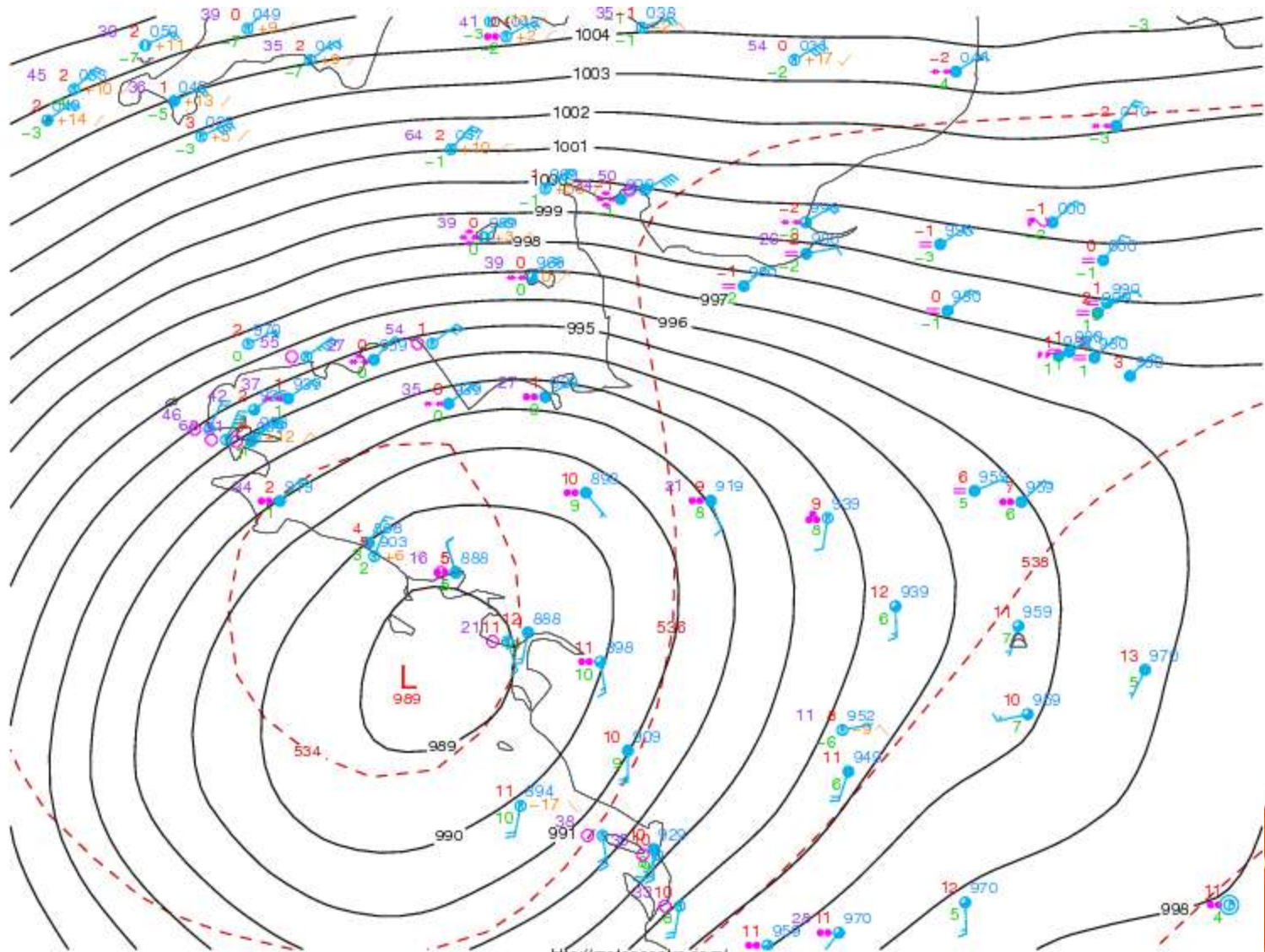
<http://meteocentre.com/>  
 Surface plot stc/130311/1100 / upa/130311.00





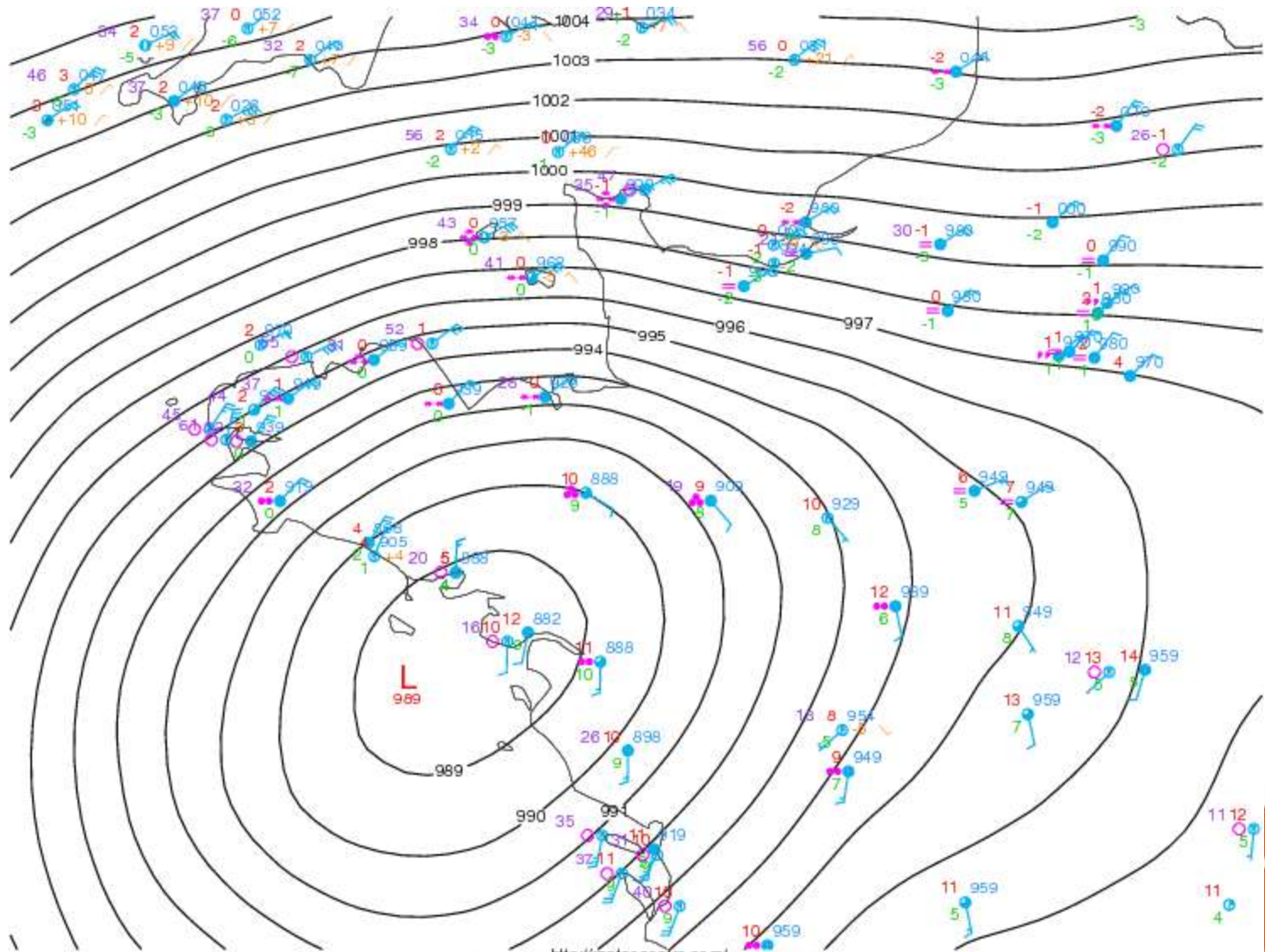
<http://meteocentre.com/>  
 Surface plot slc/130311/1200 / upa/130311.00





<http://meteocentre.com/>  
 Surface plot sfc/130311/1300 / upa/130311.00





<http://meteocentre.com/>  
Surface plot stc/130311/1400 / upa/130311/12

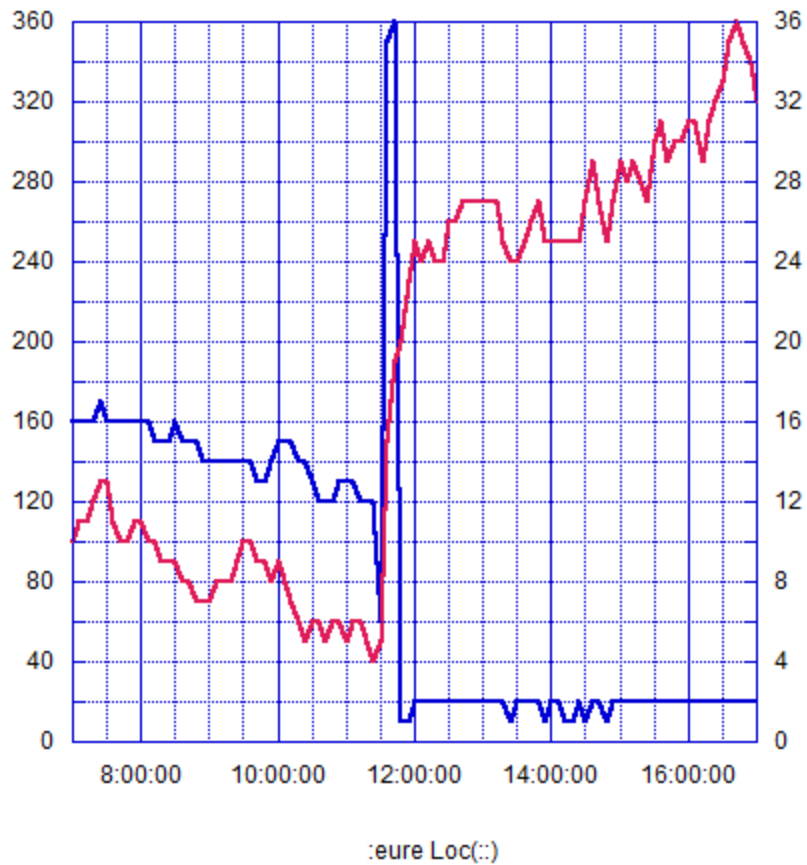




Direction (°)

Force du vent (noeuds)

20130311GX



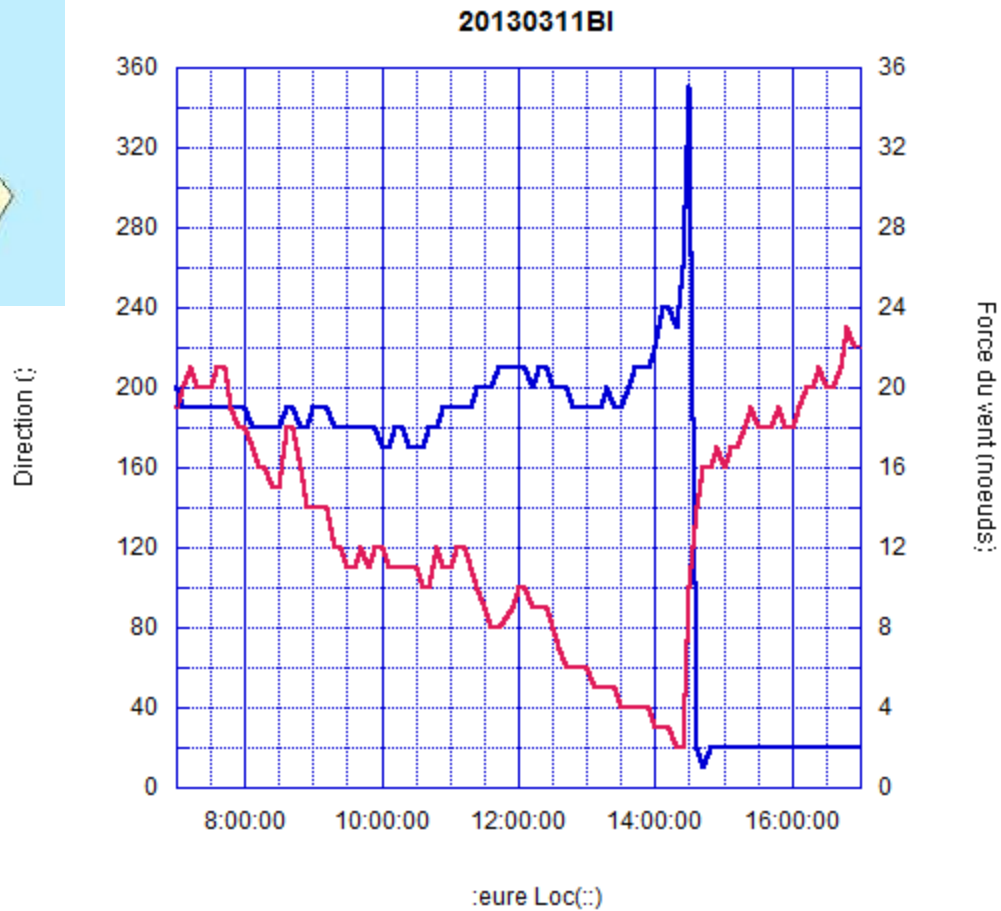
Force du vent (noeuds):

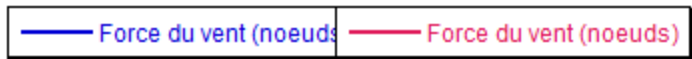




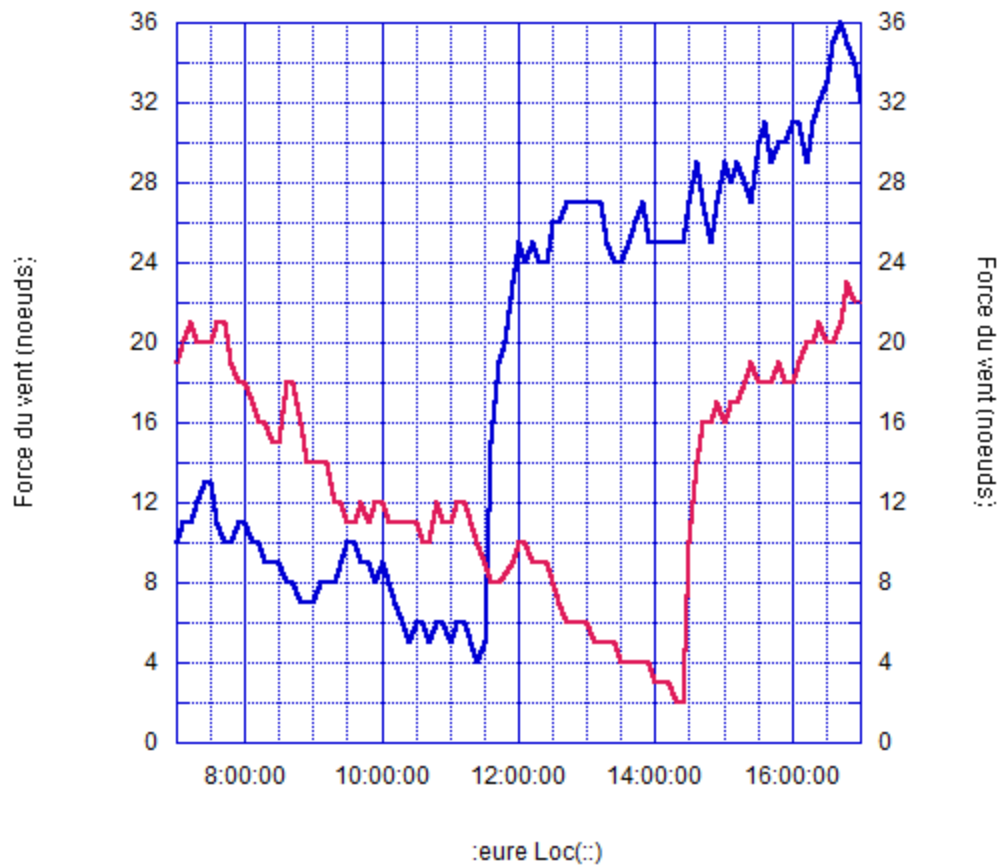
— Direction (°)

— Force du vent (noeuds)





20130311GROIX ET BELLE ILE

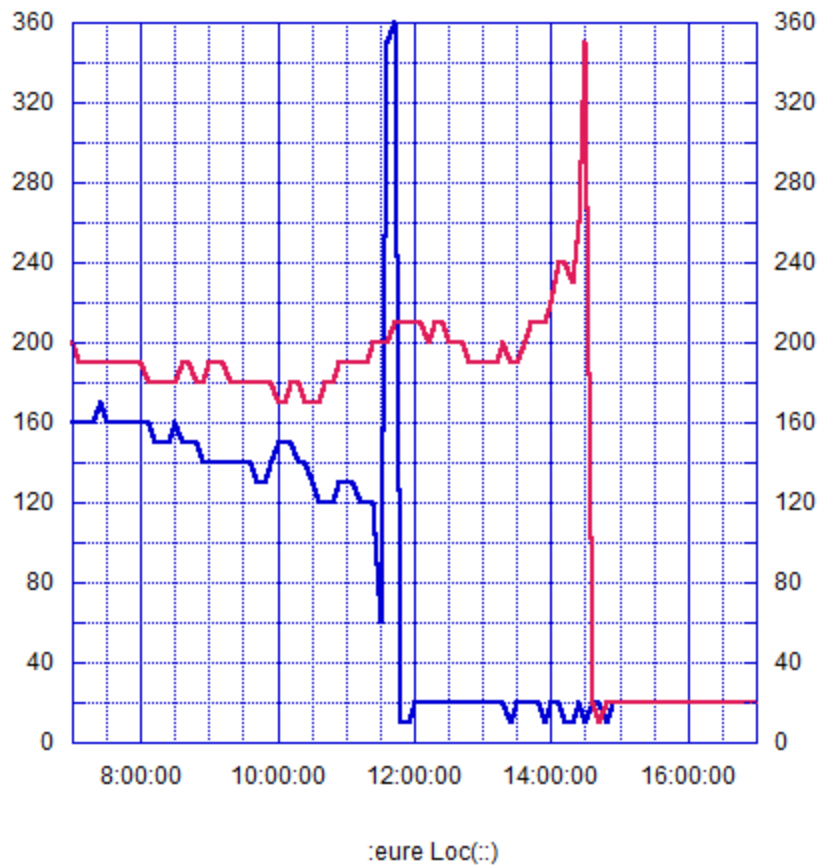




Direction ()

Direction ()

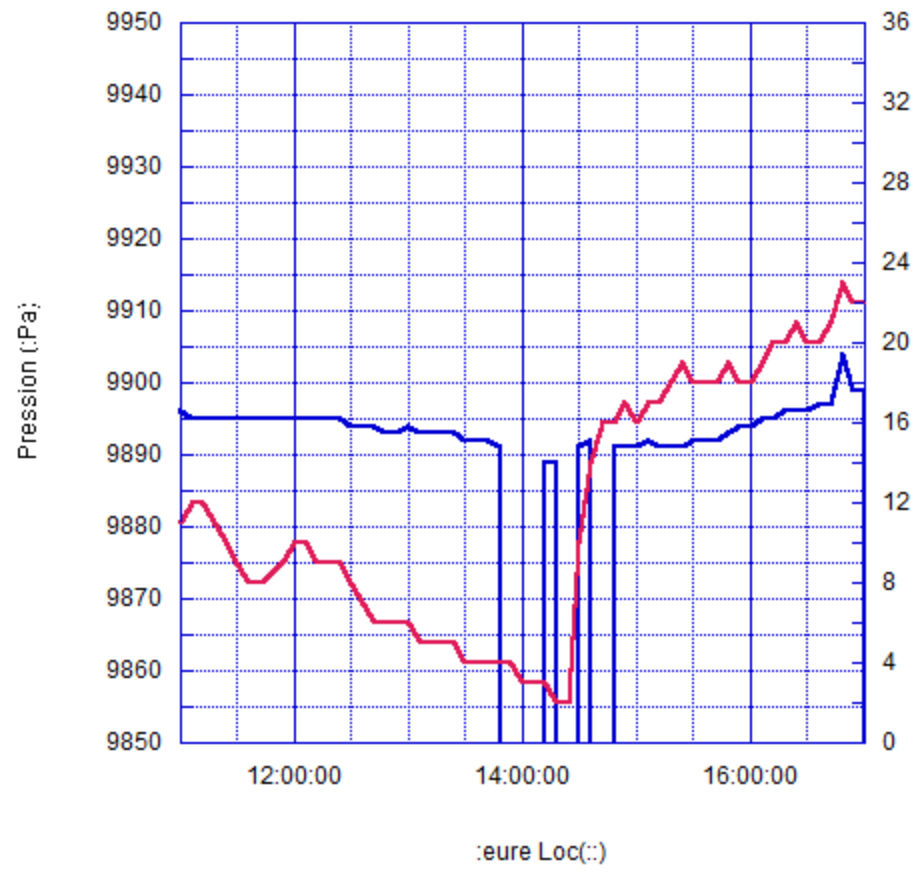
### 20130311GX ET BI



— Pression (:Pa)

— Force du vent (noeuds)

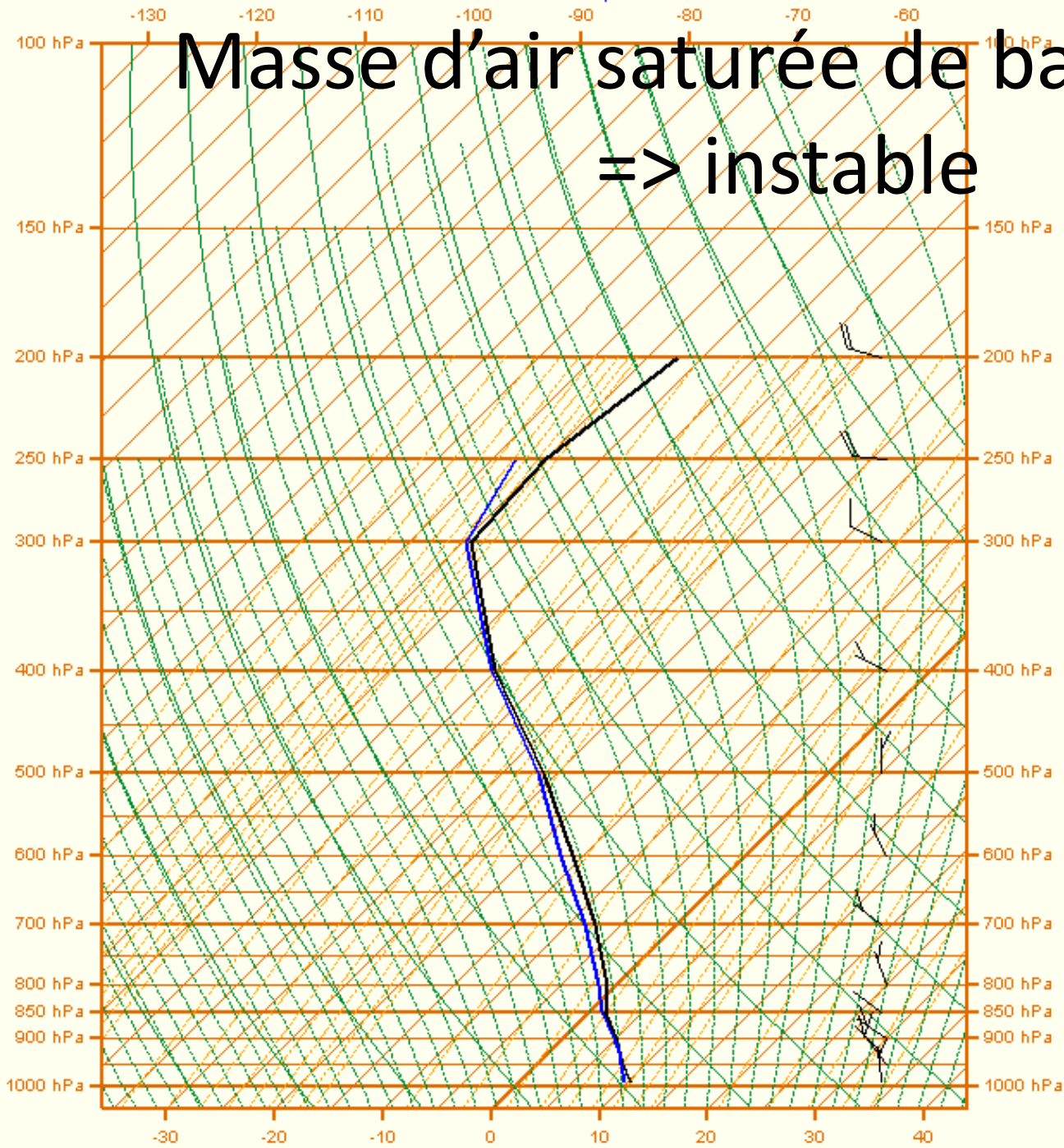
20130311BI



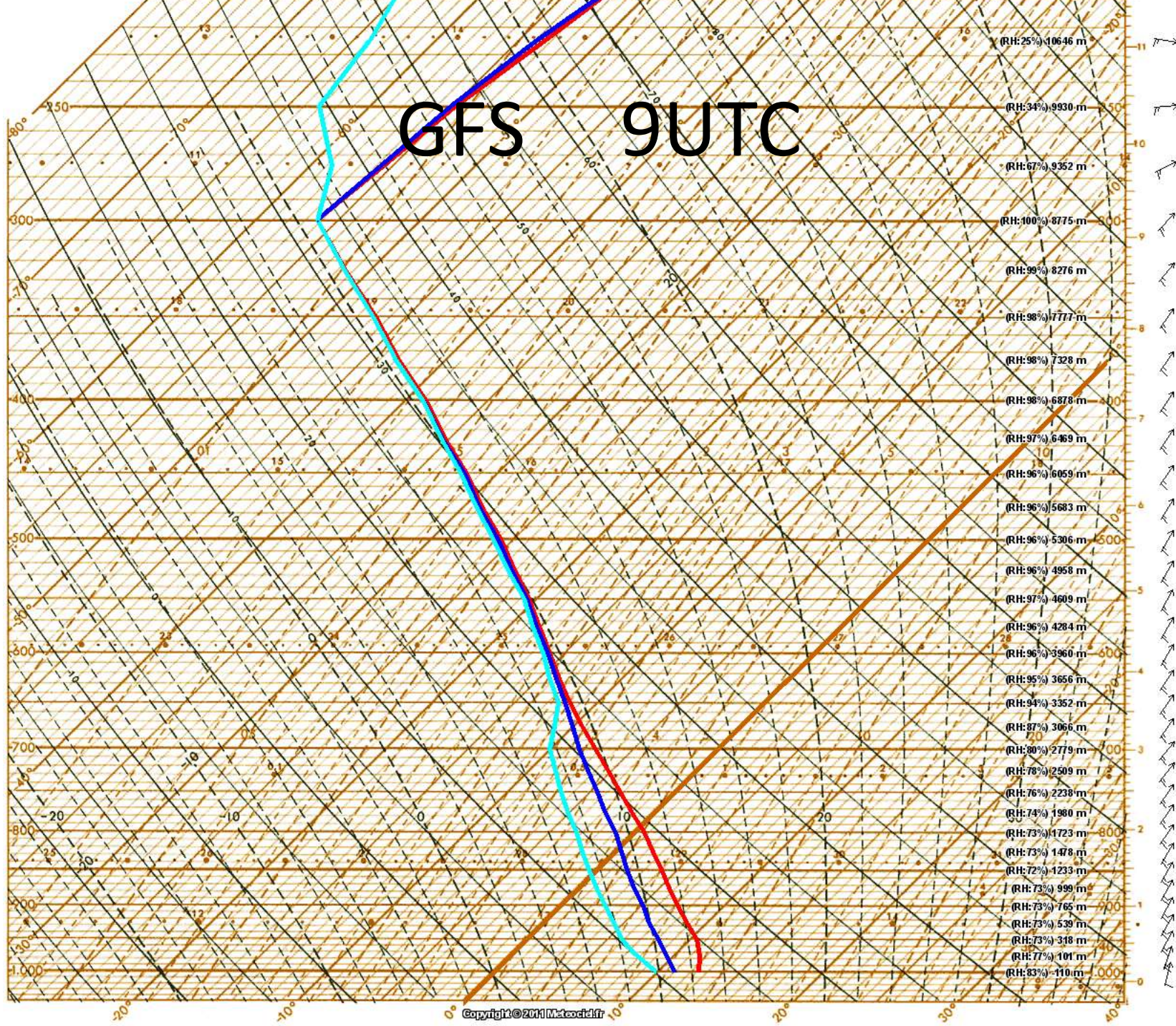
Force du vent (noeuds):



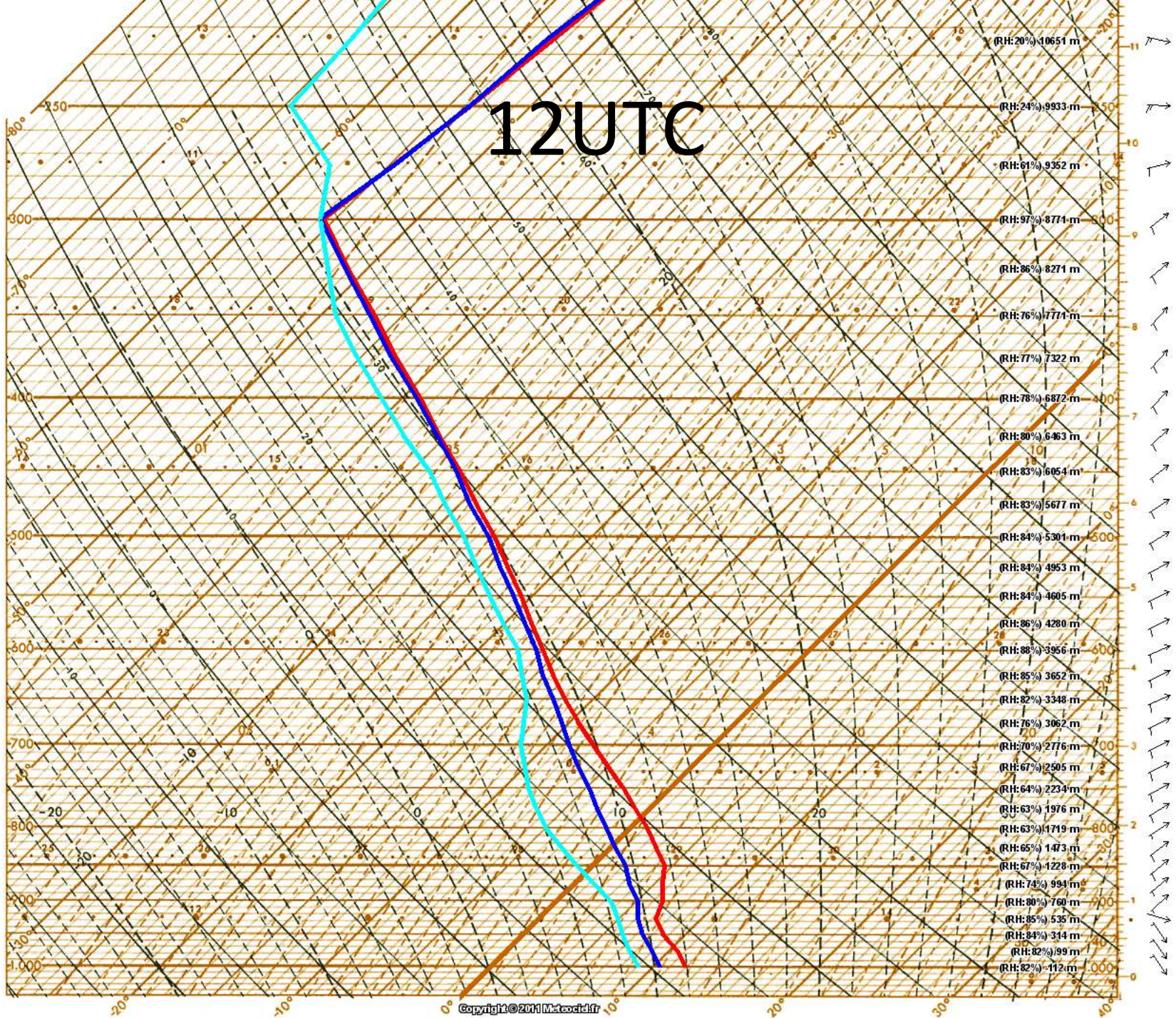
Masse d'air saturée de bas en haut  
=> instable



# GFS 9UTC



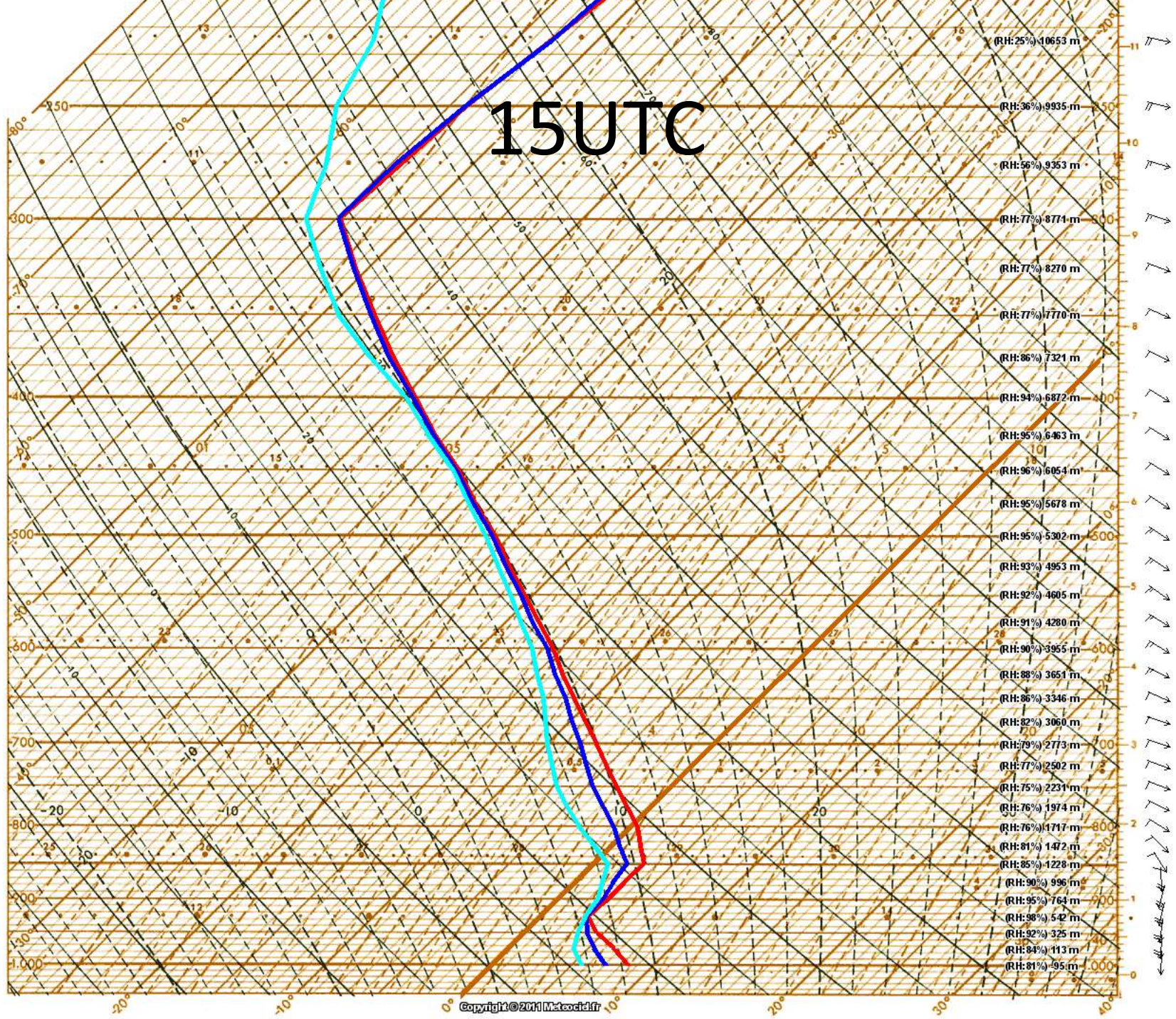
# 12UTC



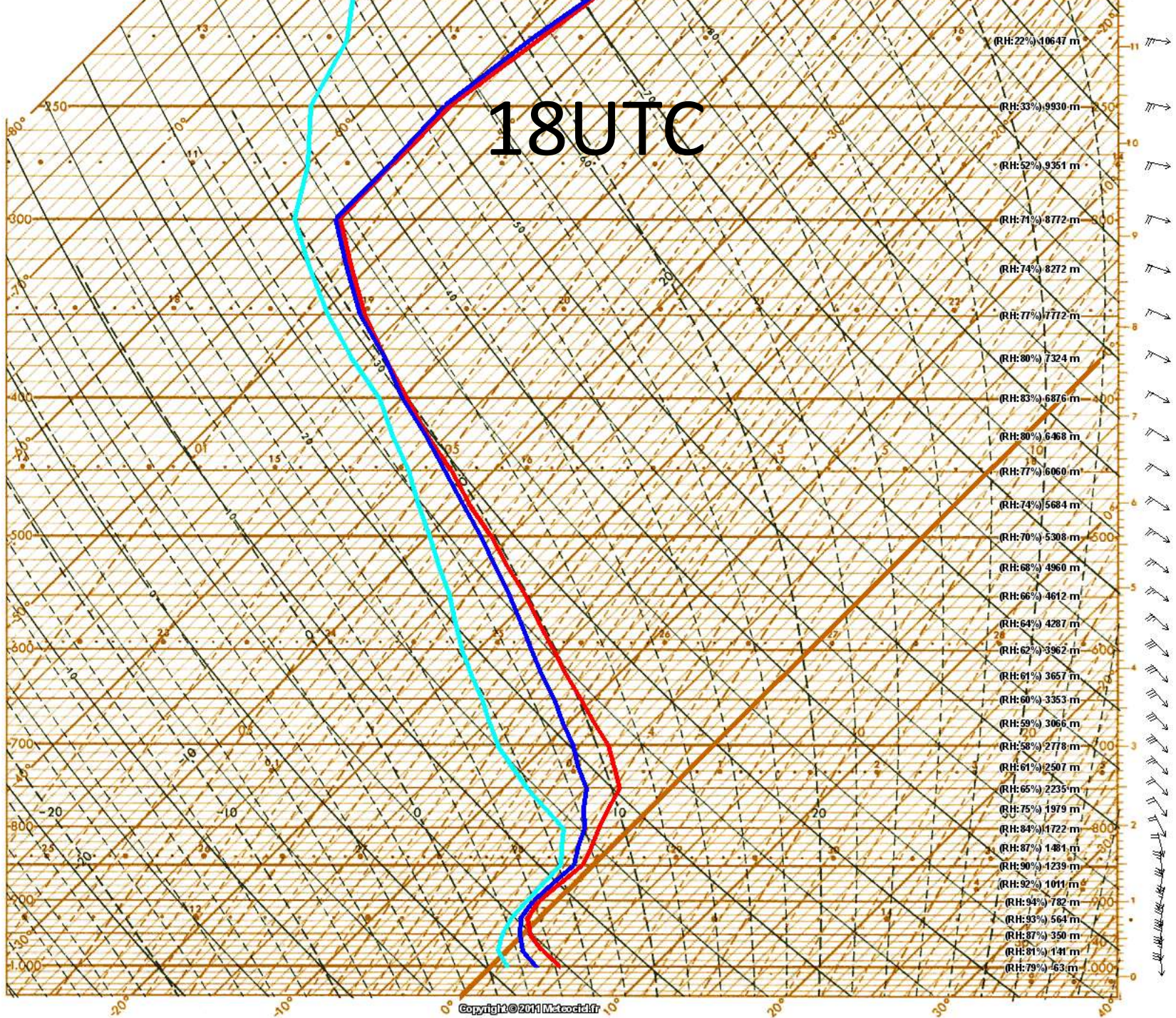
male



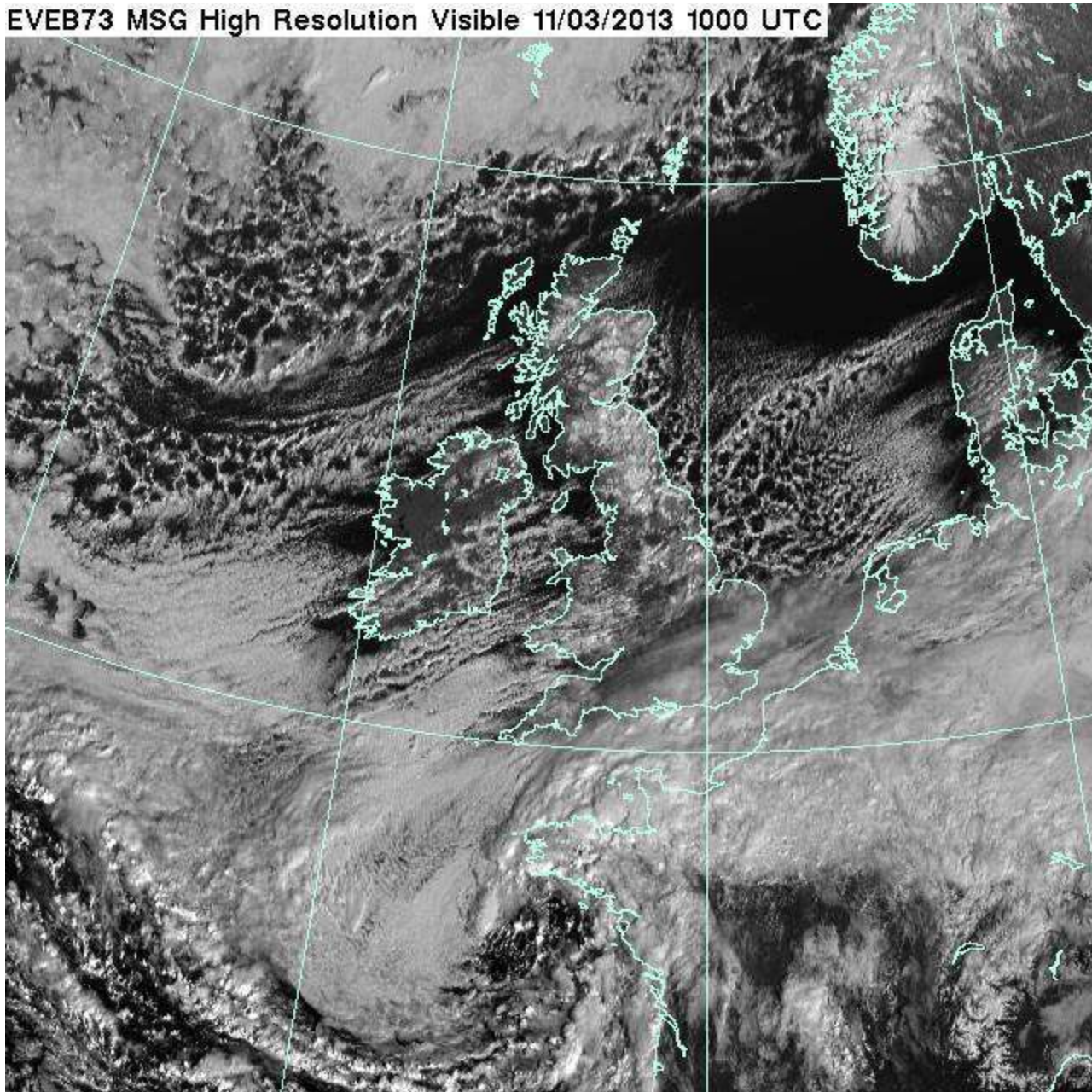
# 15UTC



# 18UTC

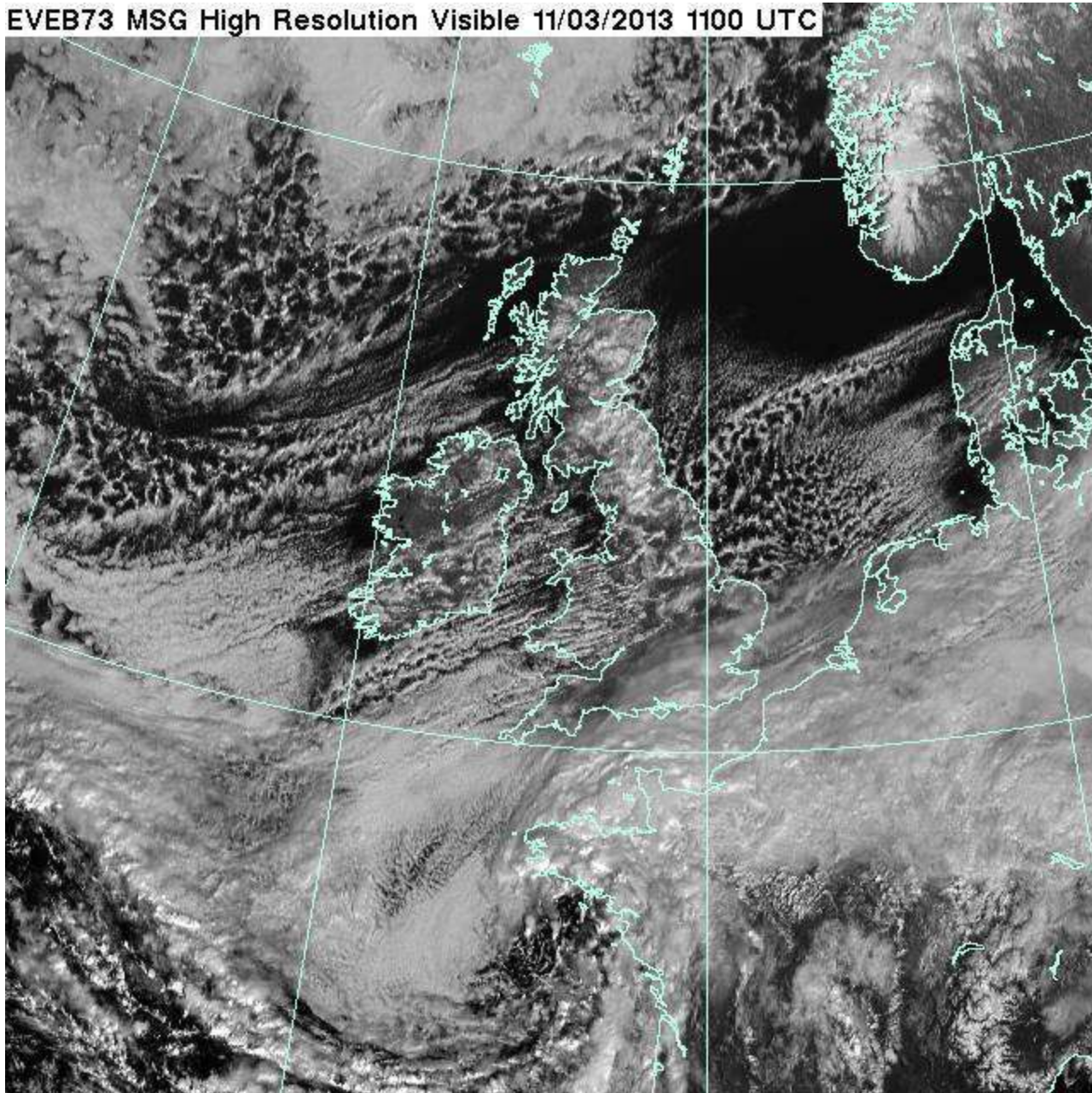


EVEB73 MSG High Resolution Visible 11/03/2013 1000 UTC

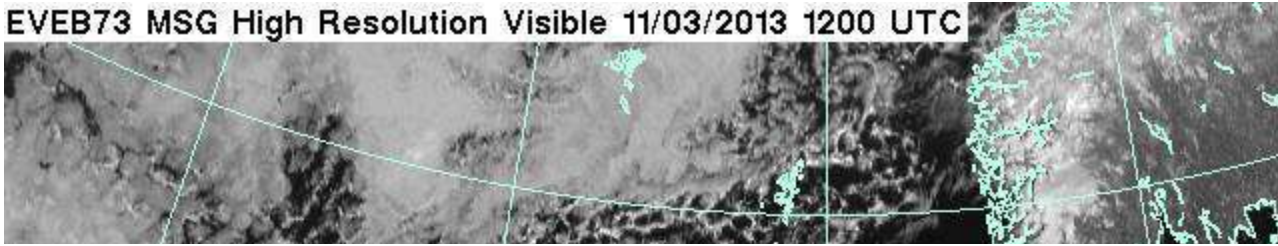




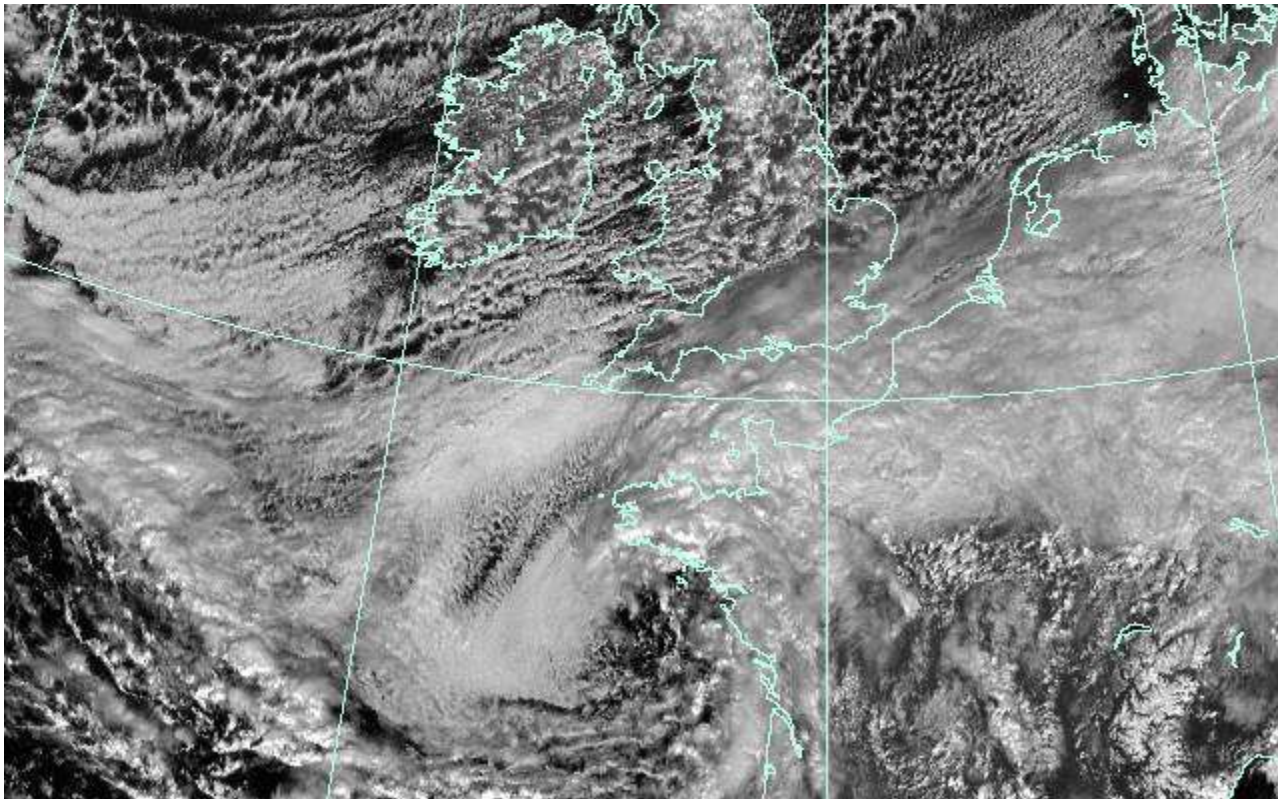
EVEB73 MSG High Resolution Visible 11/03/2013 1100 UTC



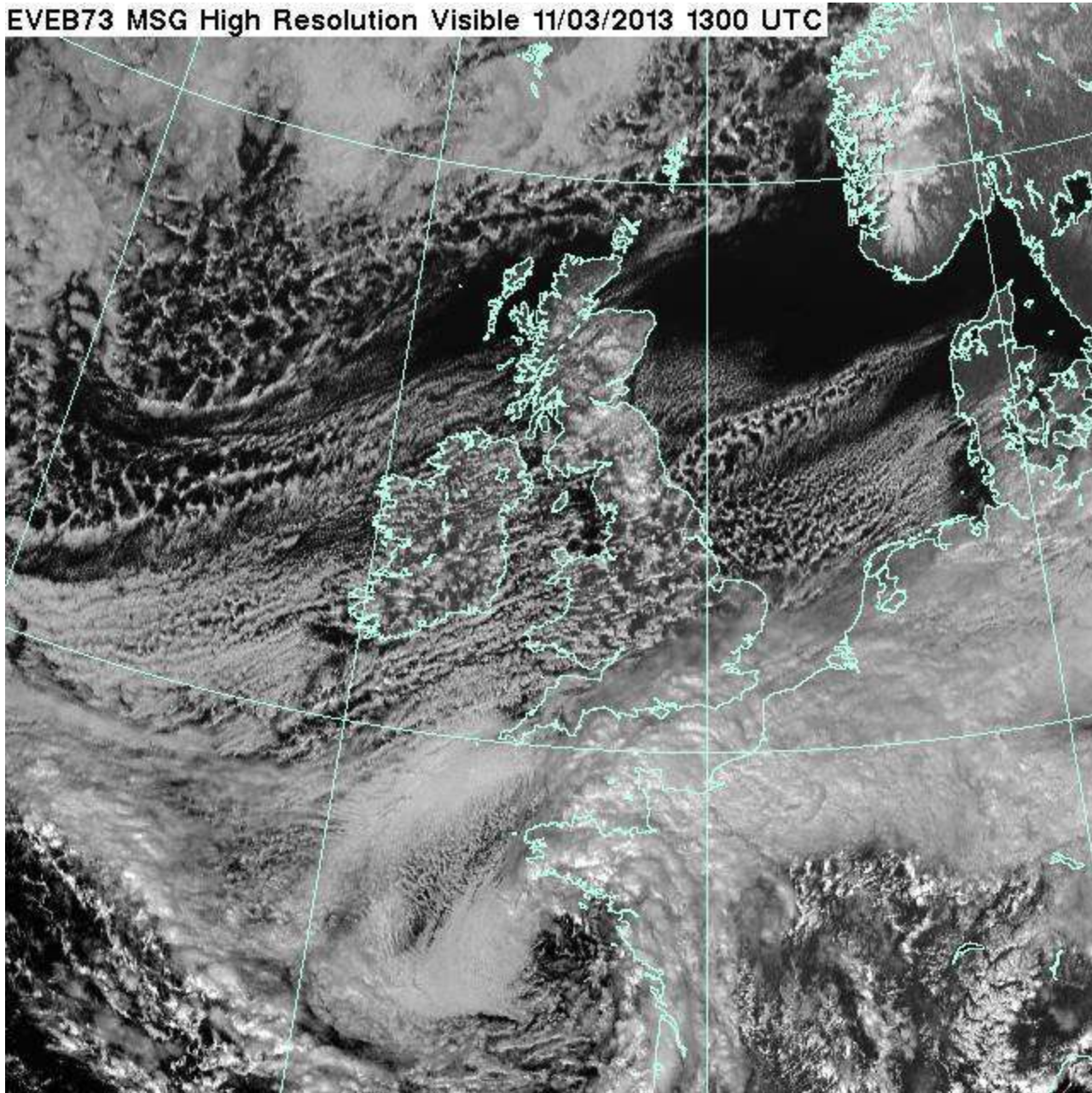
EVEB73 MSG High Resolution Visible 11/03/2013 1200 UTC



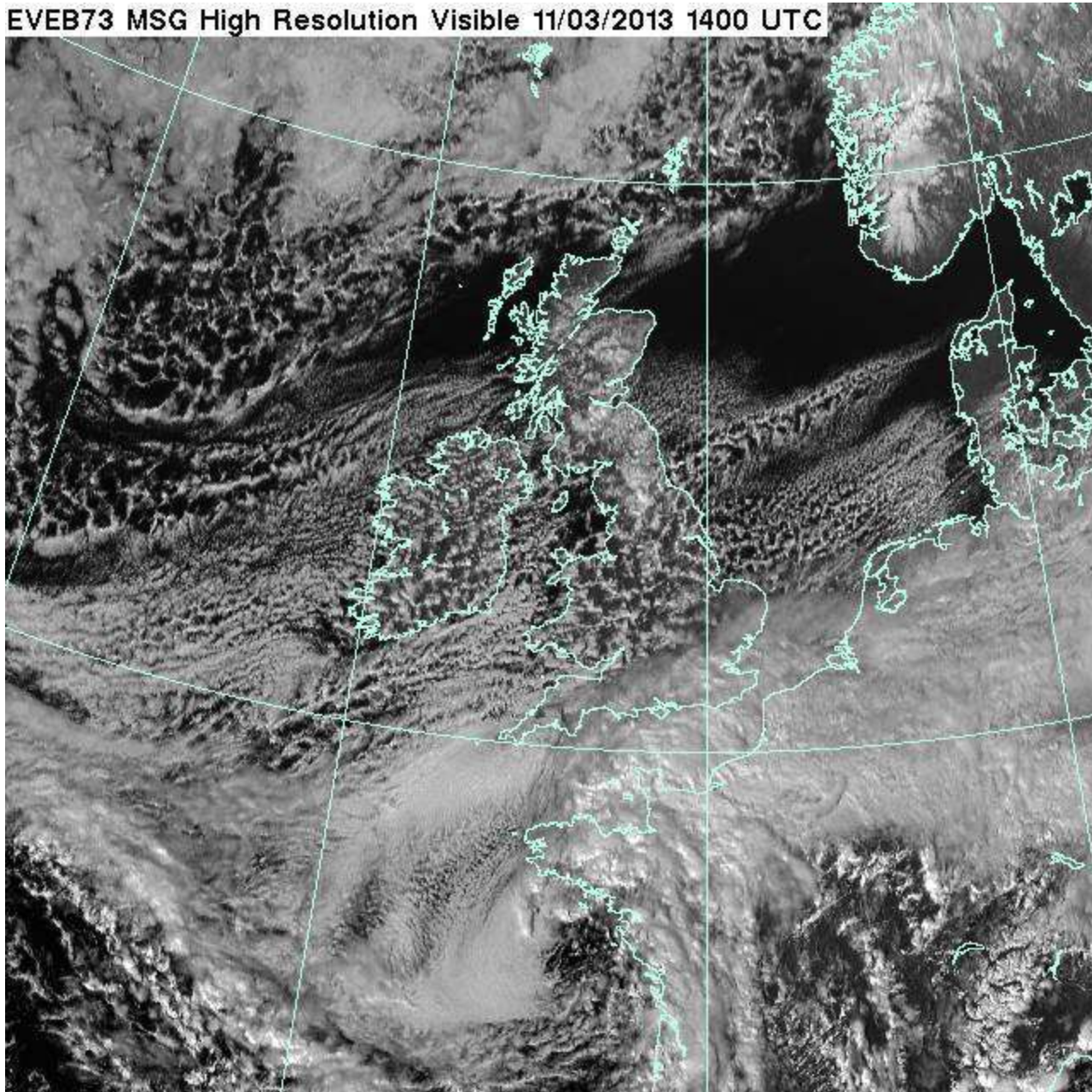
# Arrivée des nuages par le nord ouest



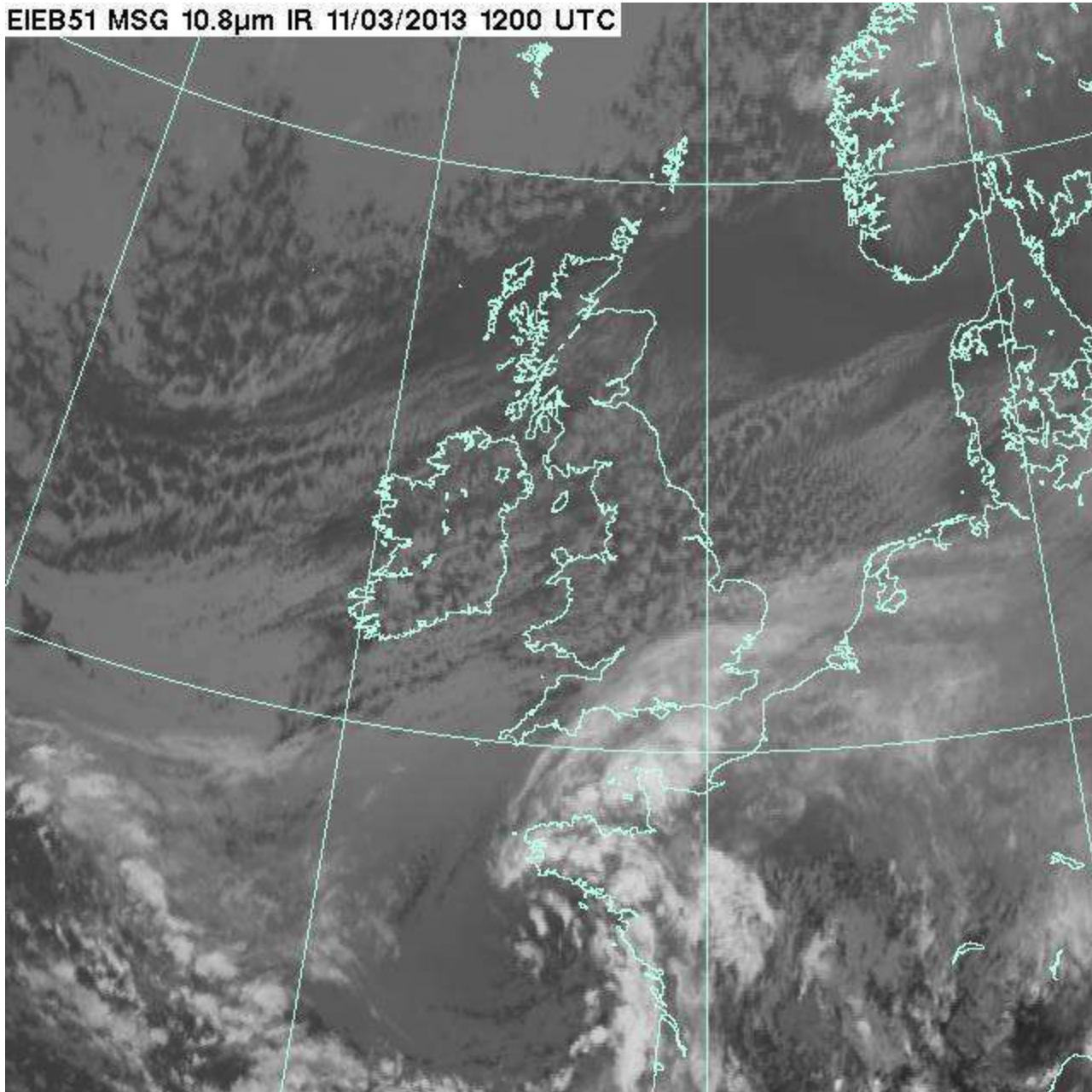
EVEB73 MSG High Resolution Visible 11/03/2013 1300 UTC

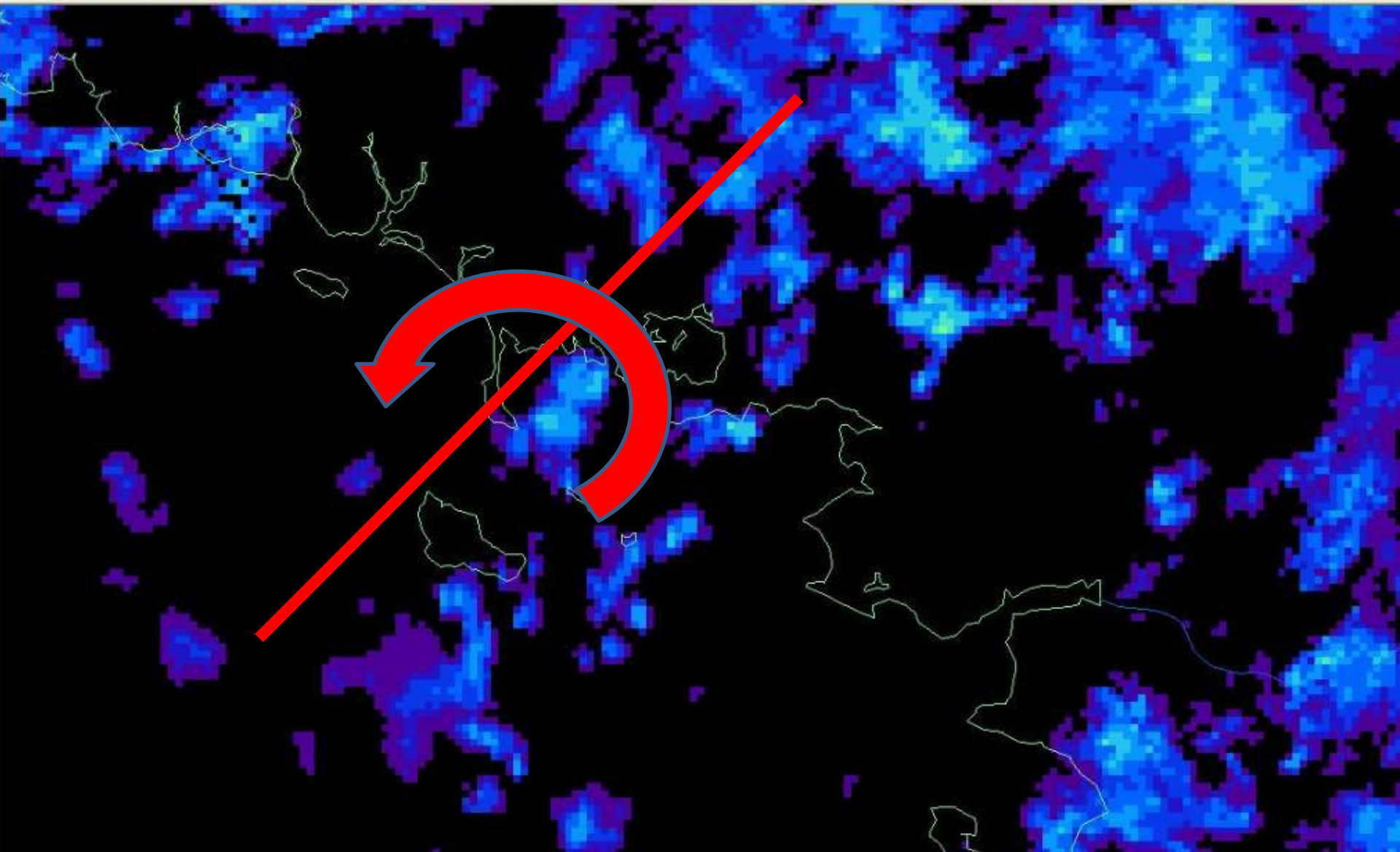


EVEB73 MSG High Resolution Visible 11/03/2013 1400 UTC



EIEB51 MSG 10.8µm IR 11/03/2013 1200 UTC





# Scénario(s) prévu(s) pour LUNDI 11 MARS

**Ciel:** pluie

**Vent:** Ce matin, S, 10/20nds mollissant 8/15nds.  
Cet aprem, N, 12/15nds se renforçant 20/25nds avec rafales 30/35nds.

**Mer:** peu agitée

**Températures :** mini 4°/maxi 10°

**Température de l'eau :** 10°

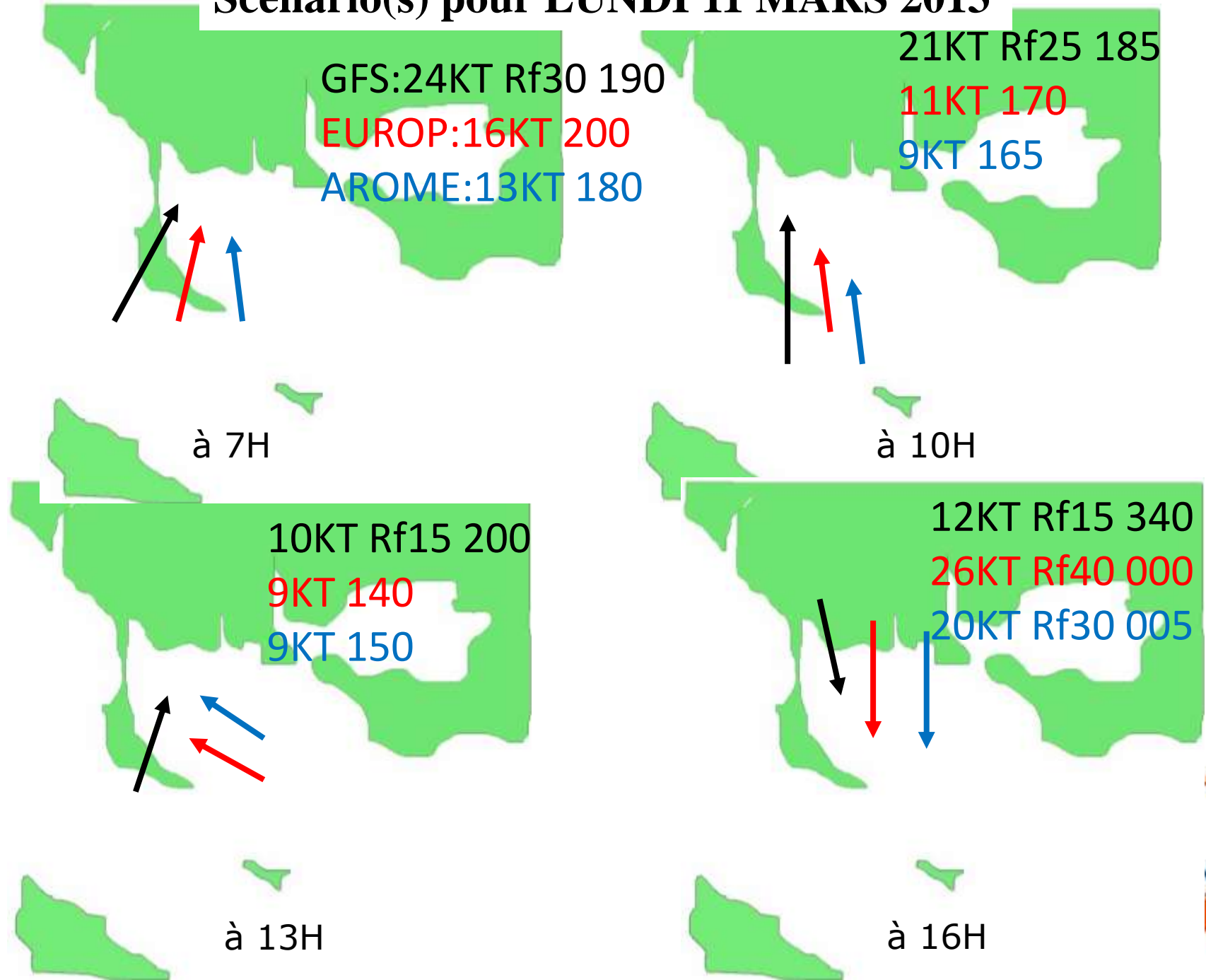
**T°ressentie l'aprem:** 1°

**Courant:** BM 10H33 - PM 17H47    **COEF** 100

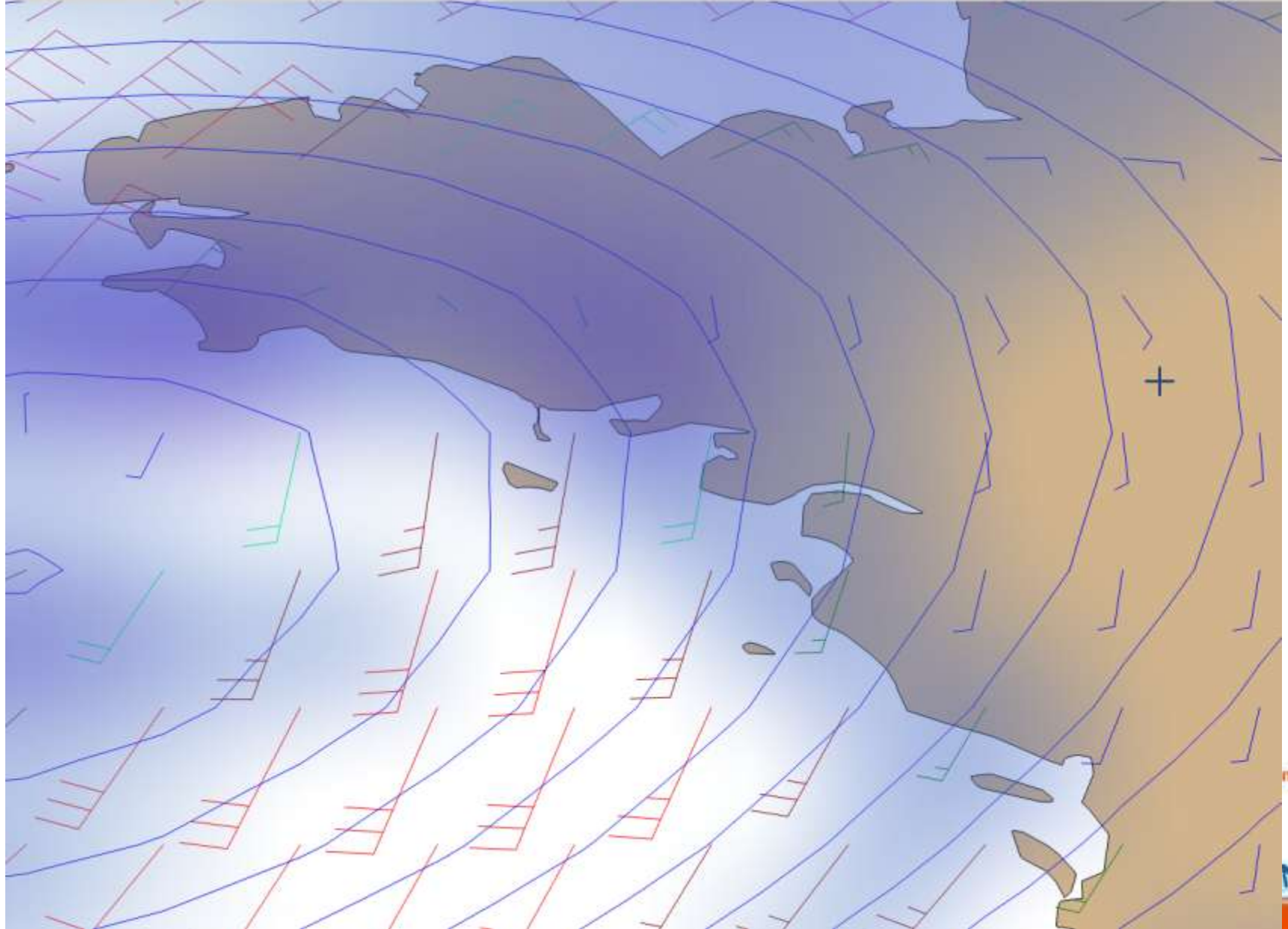
**Soleil :** Lever 7H32 - Coucher 19H11

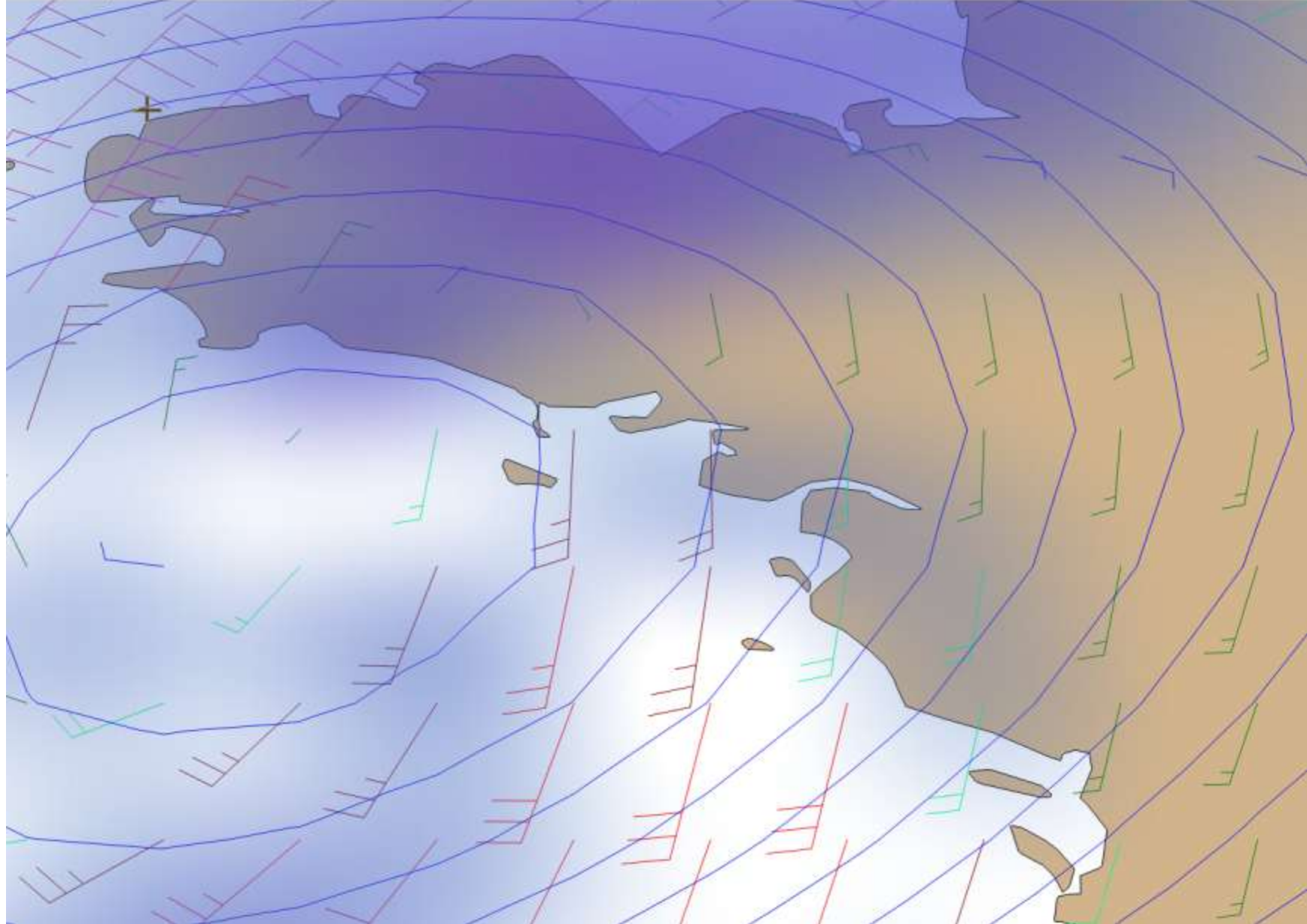


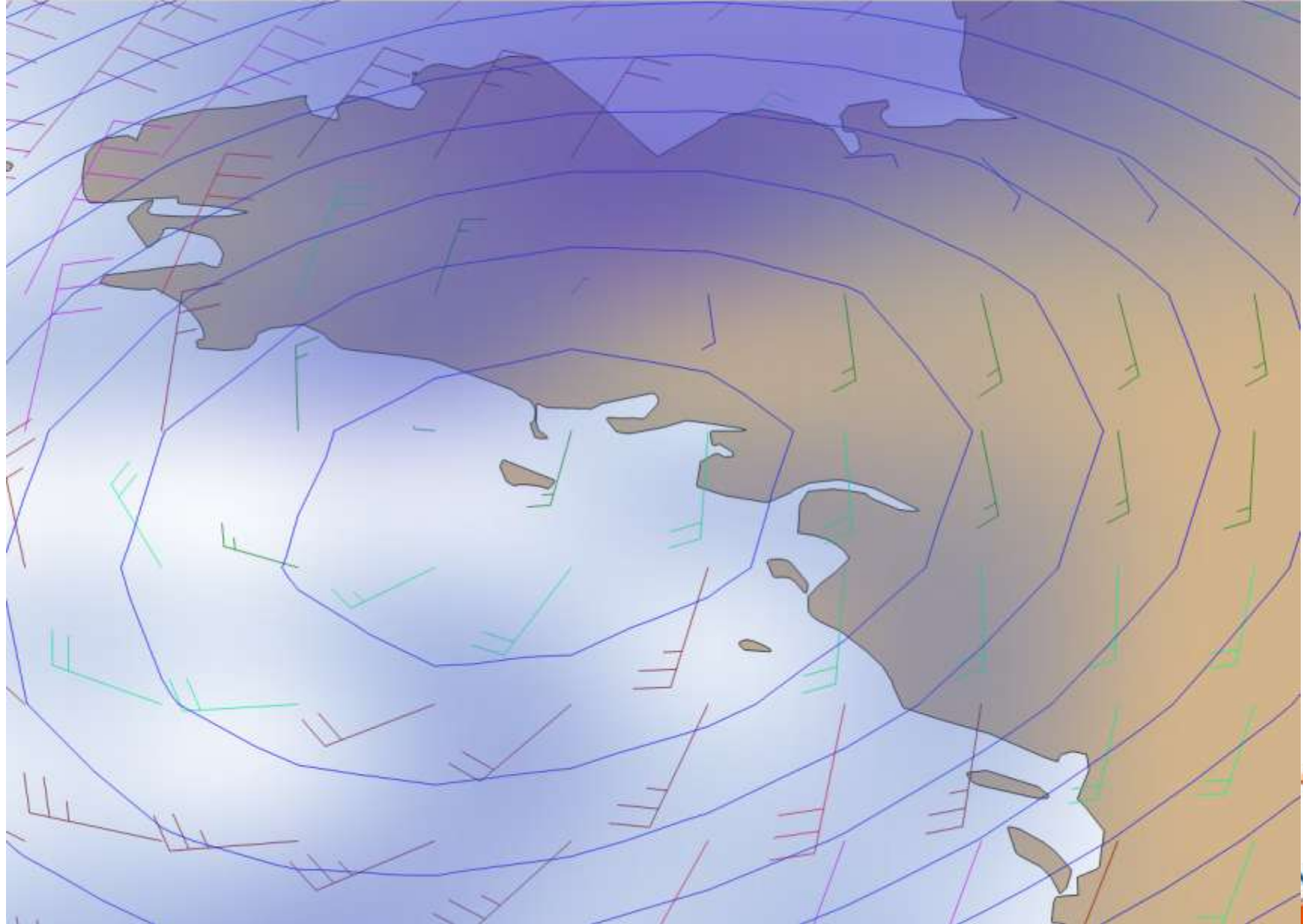
# Scénario(s) pour LUNDI 11 MARS 2013

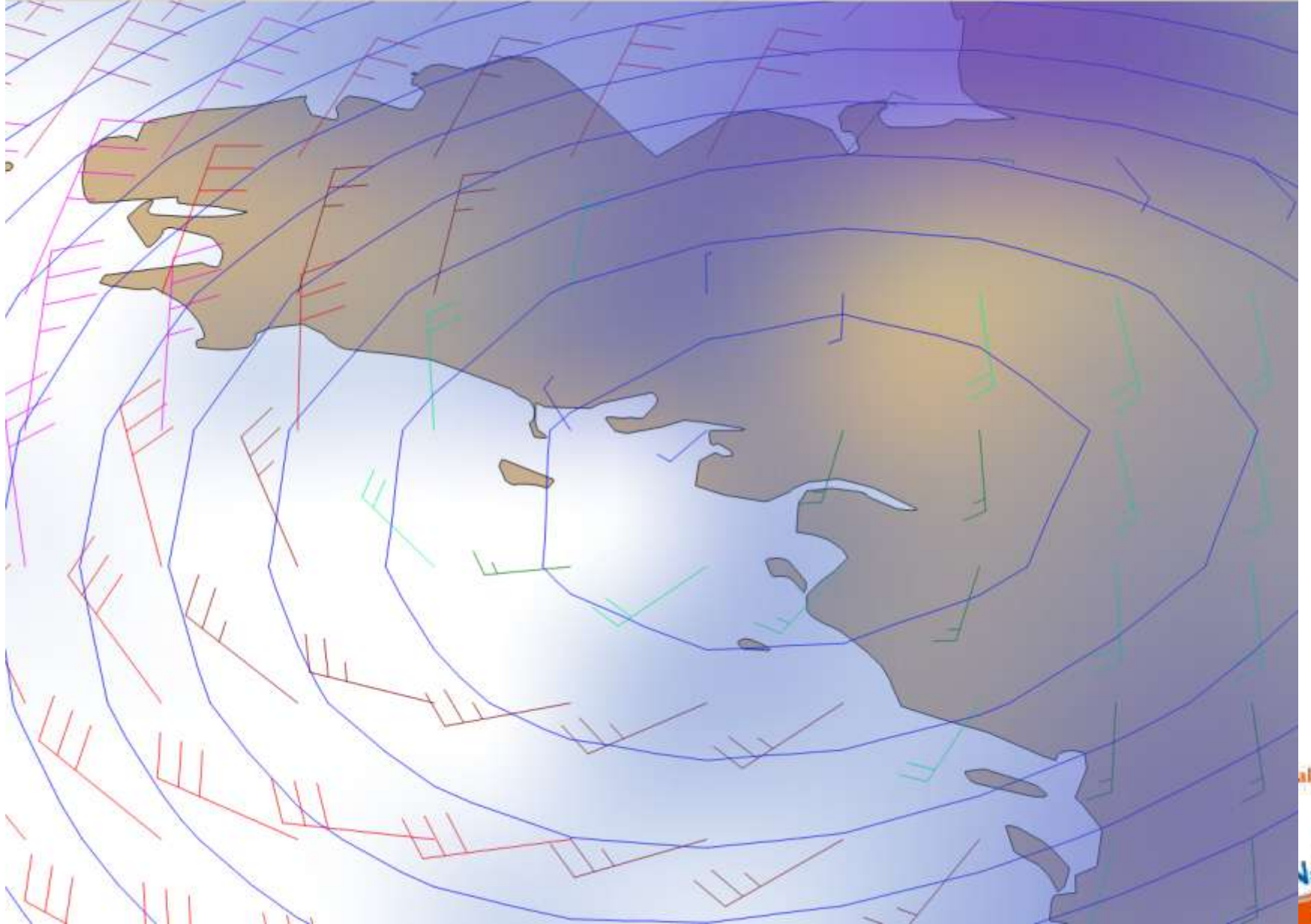


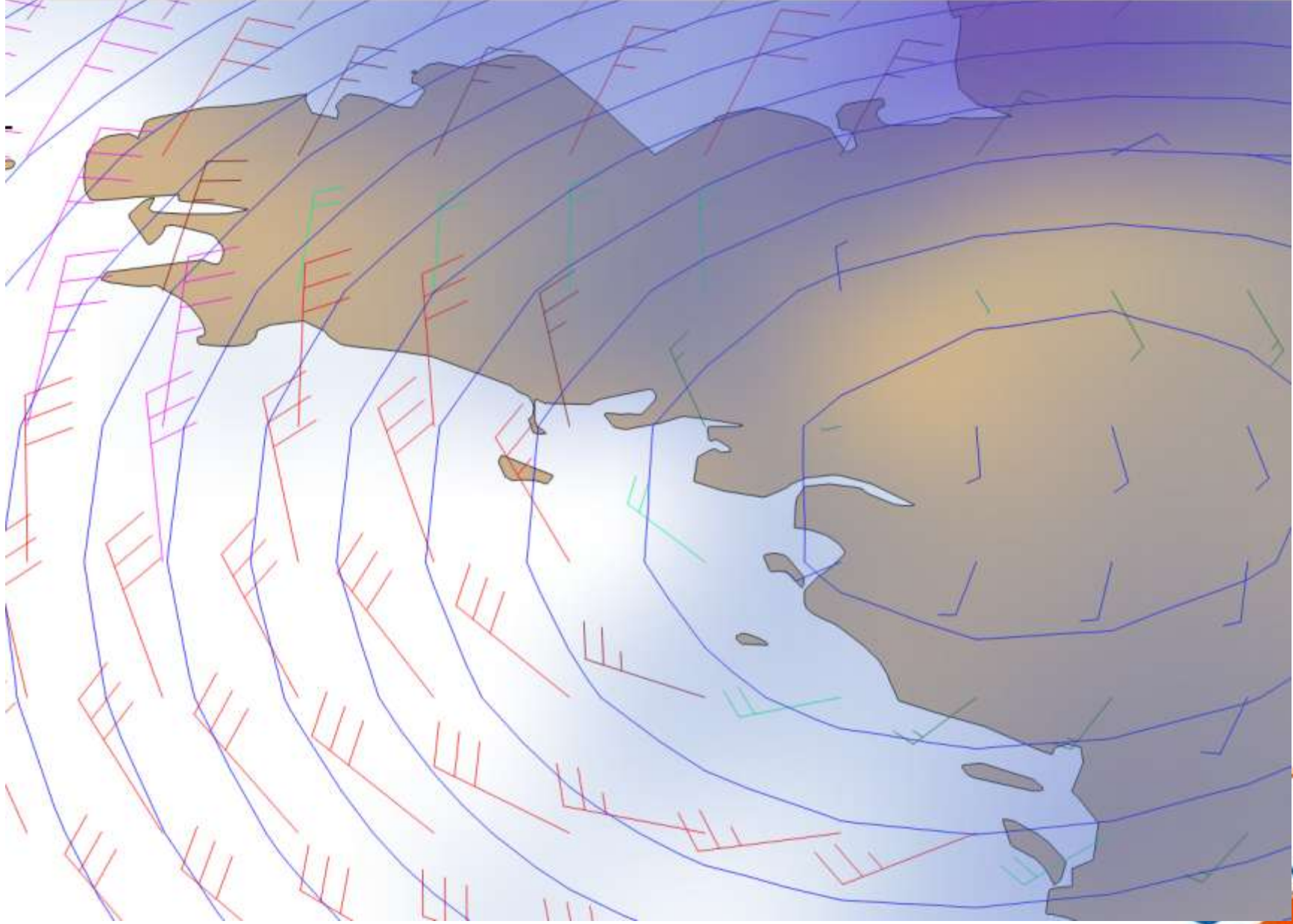


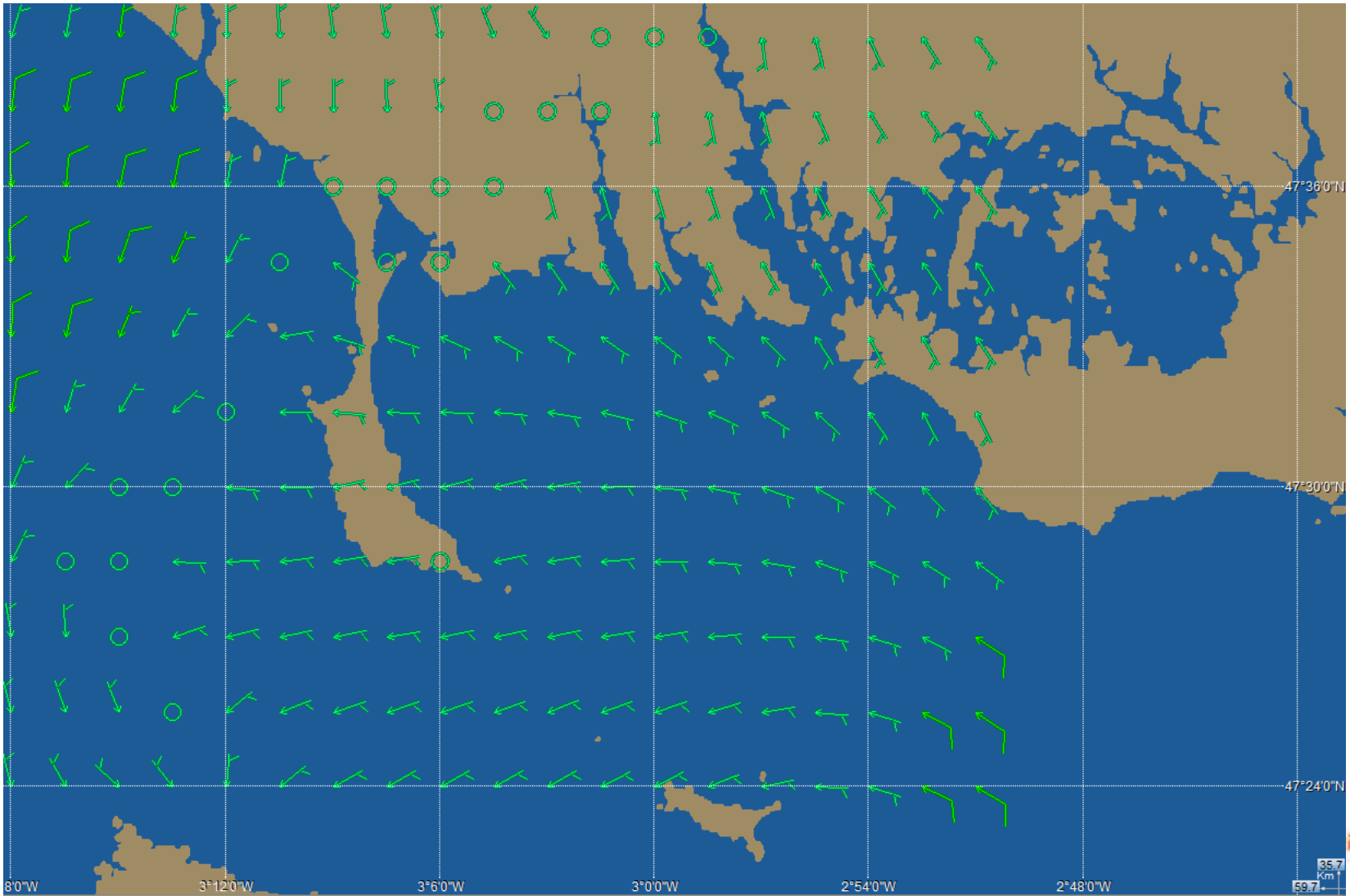






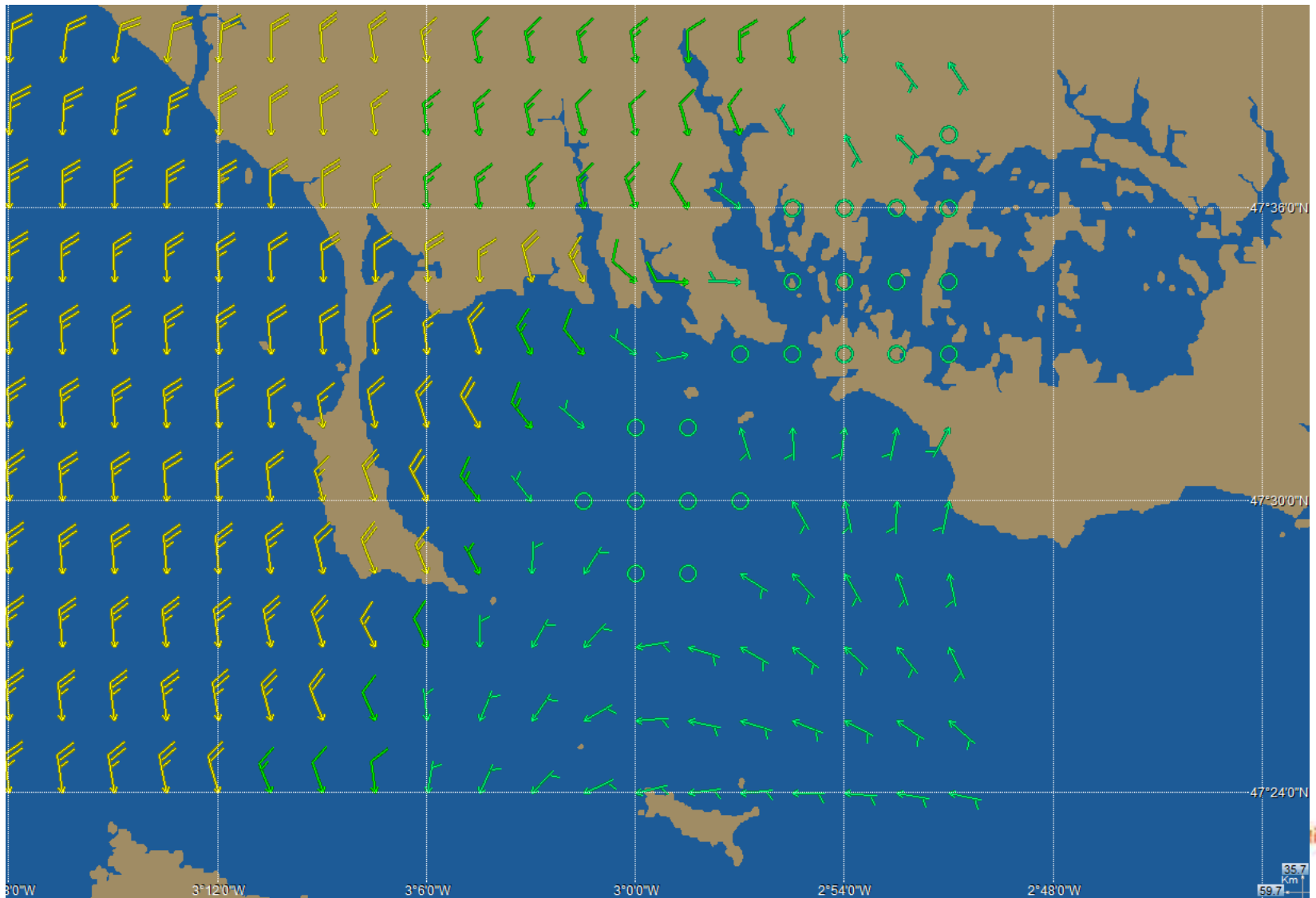






Lun 11 Mars 2013 - 13h UTC / 14h Loc (+13h)

/ Vent moyen à 10 mètres, direction (degrés) et force (noeuds)



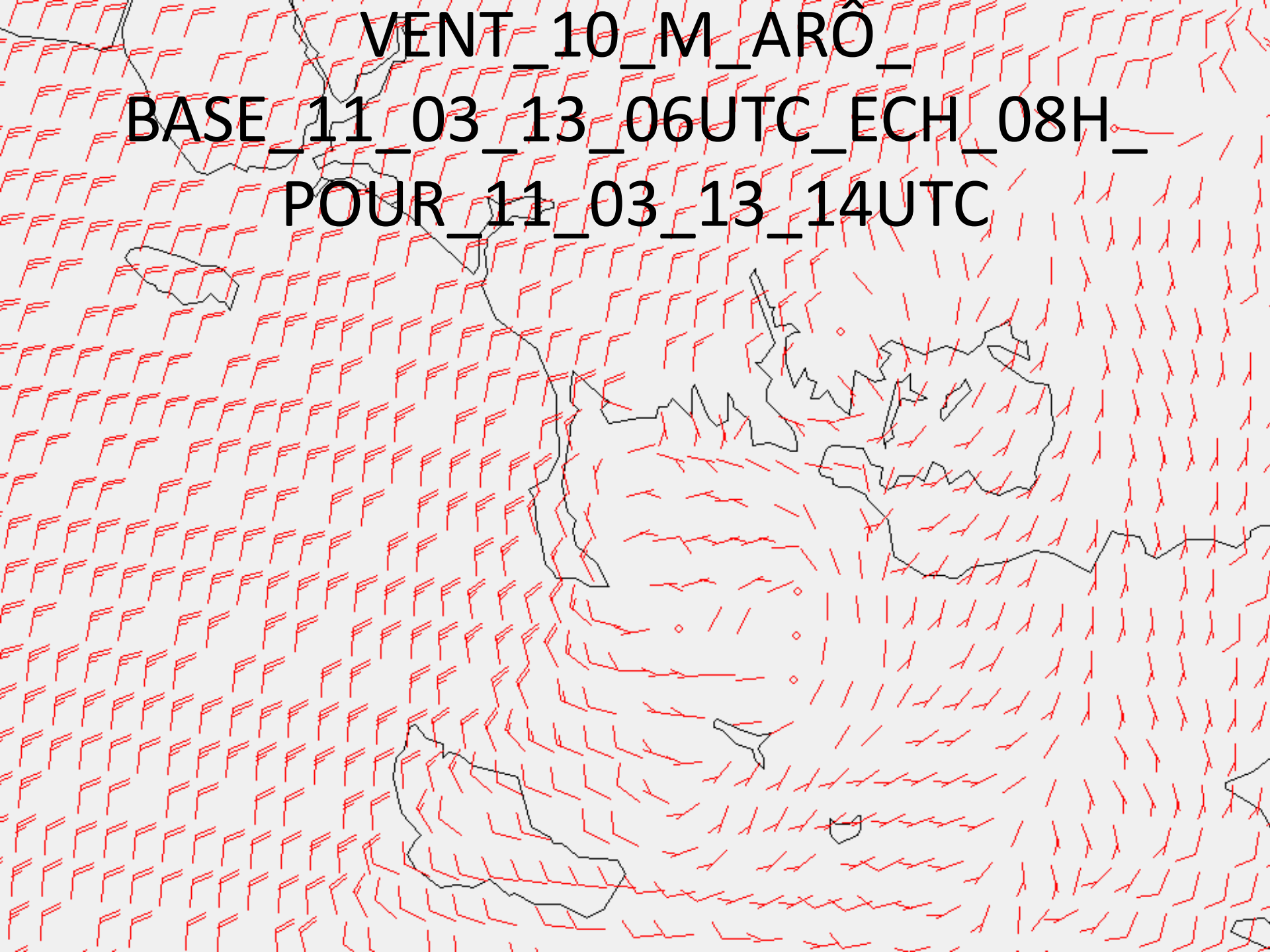
Lun 11 Mars 2013 - 14h UTC / 15h Loc (+14h)

/ Vent moyen à 10 mètres, direction (degrés) et force (noeuds)

Modèle: Arome



VENT\_10\_M\_ARÔ\_  
BASE\_11\_03\_13\_06UTC\_ECH\_08H\_  
POUR\_11\_03\_13\_14UTC





VENT\_250\_M\_ARÔ\_  
BASE\_11\_03\_13\_06UTC\_ECH\_08H\_  
POUR\_11\_03\_13\_14UTC

