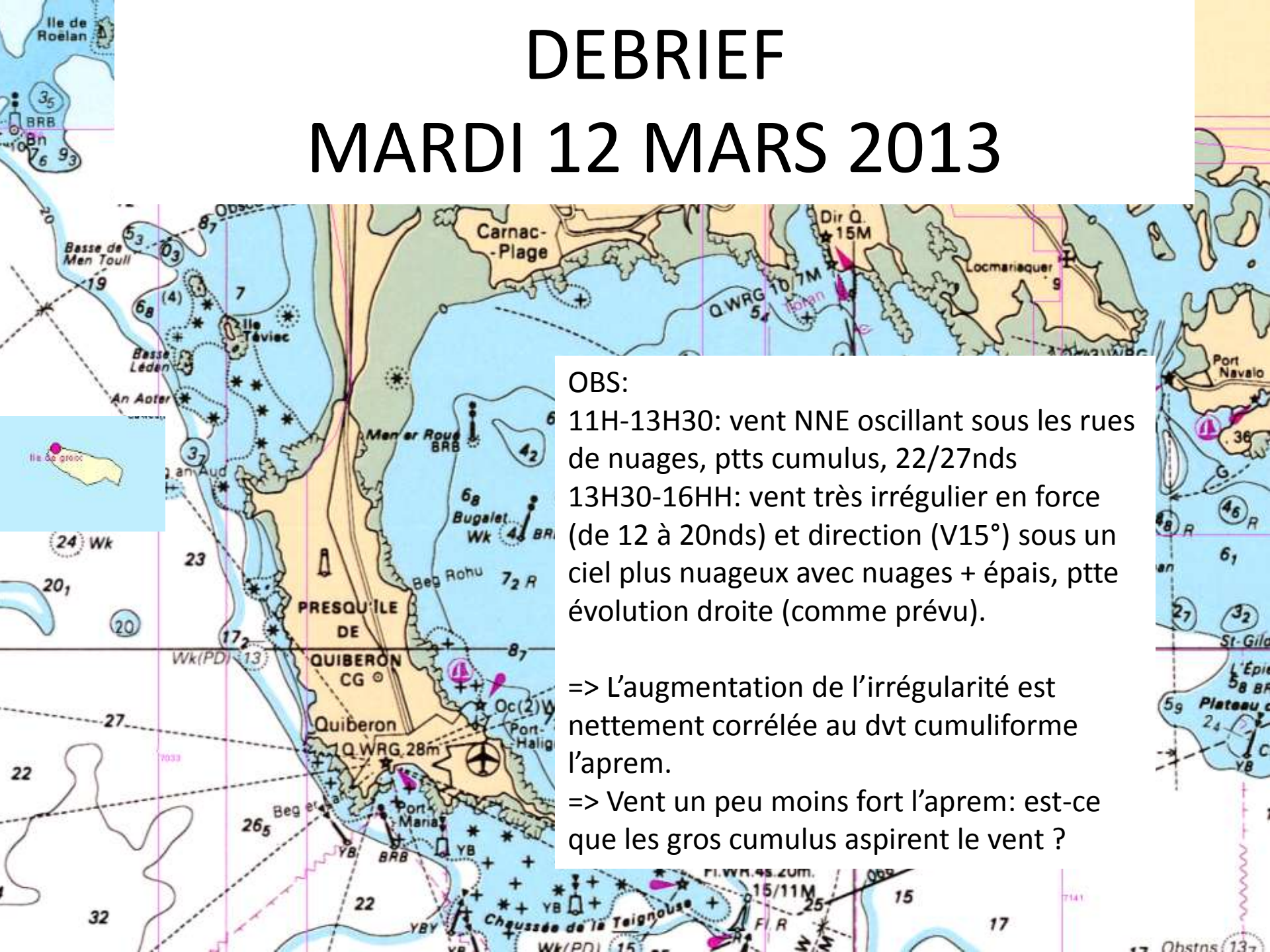


DEBRIEF

MARDI 12 MARS 2013



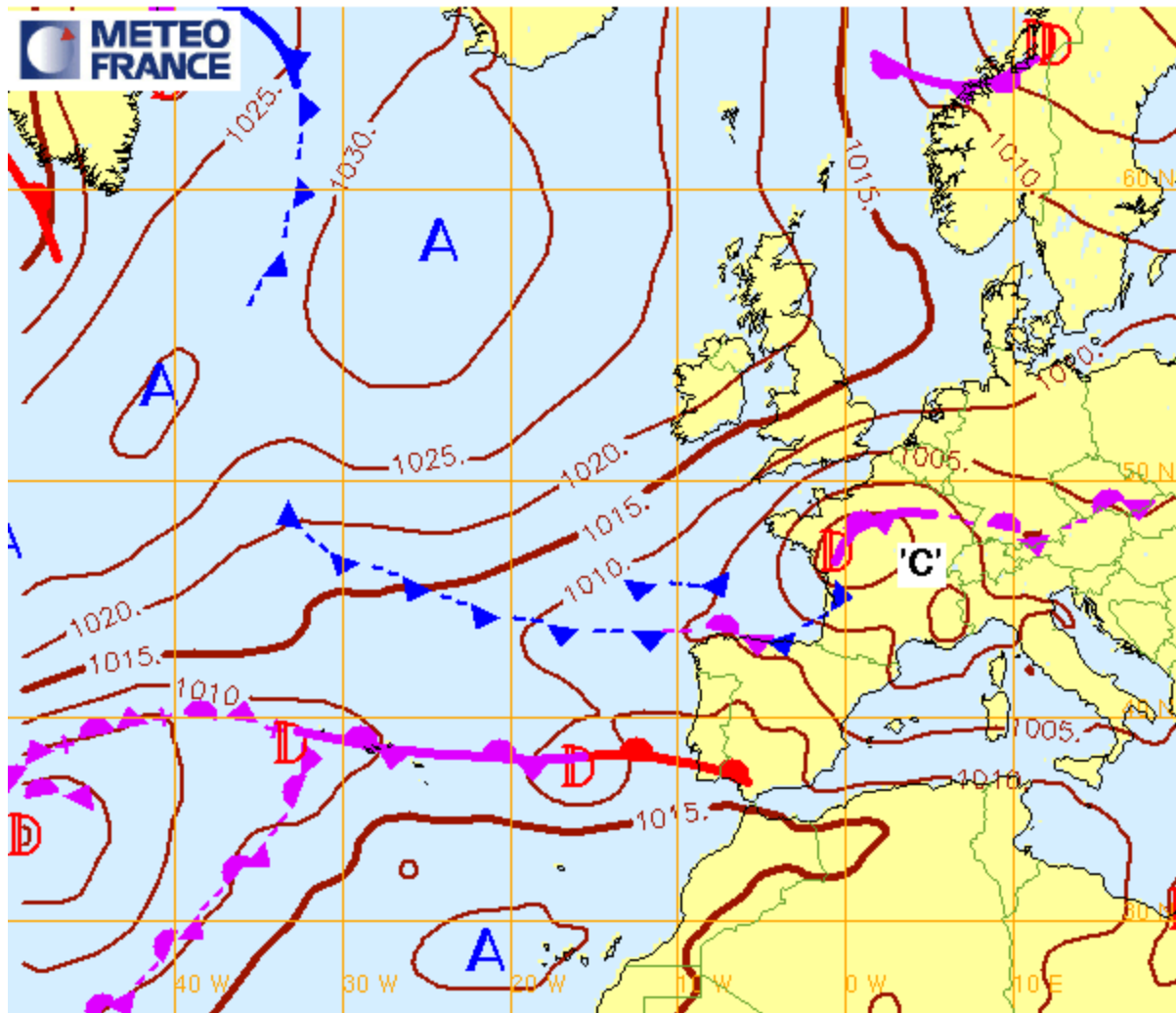
OBS:

11H-13H30: vent NNE oscillant sous les rues de nuages, ptt cumulus, 22/27nds
13H30-16HH: vent très irrégulier en force (de 12 à 20nds) et direction ($V15^\circ$) sous un ciel plus nuageux avec nuages + épais, ptte évolution droite (comme prévu).

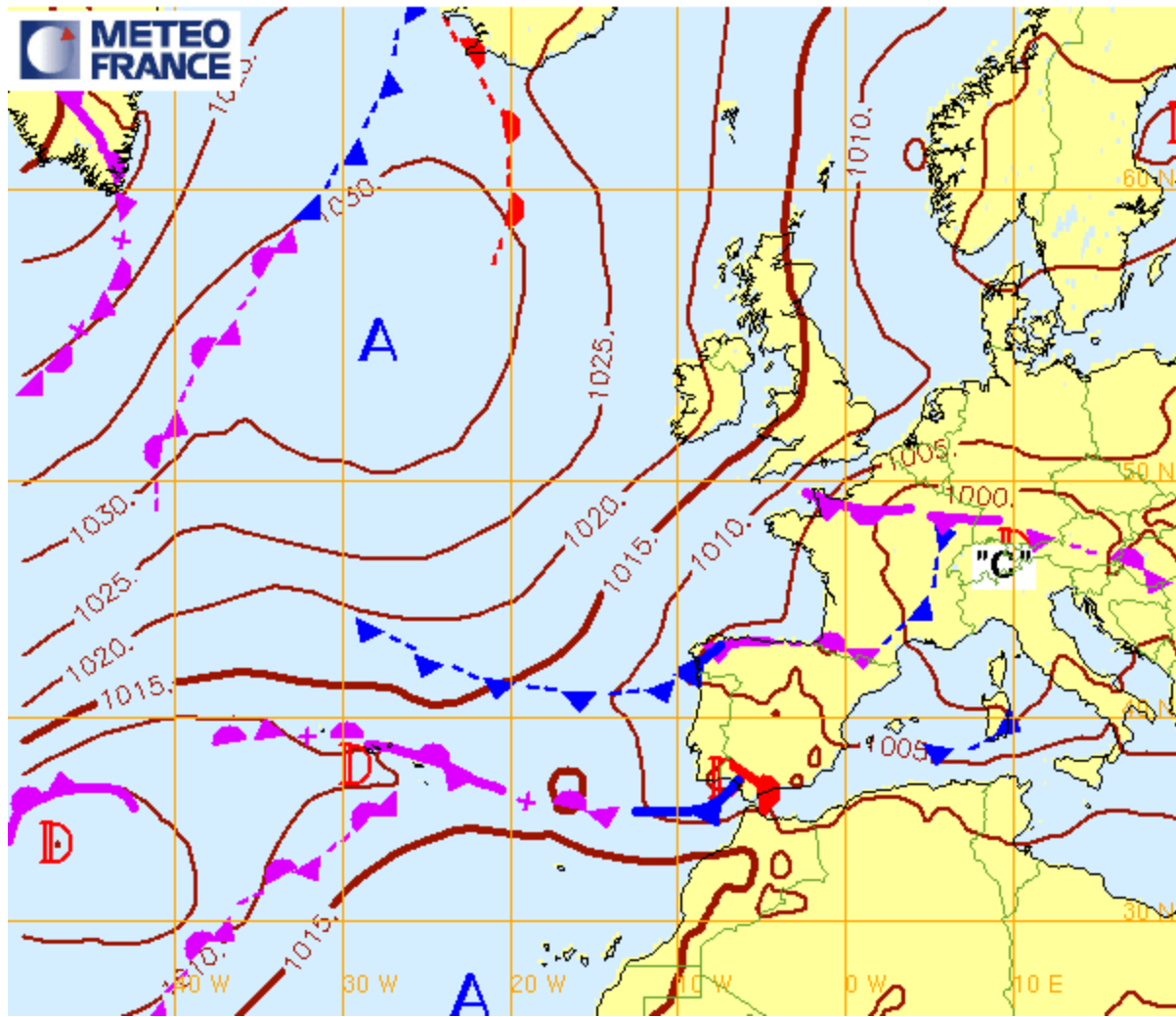
=> L'augmentation de l'irrégularité est nettement corrélée au dvt cumuliforme l'aprem.

=> Vent un peu moins fort l'aprem: est-ce que les gros cumulus aspirent le vent ?

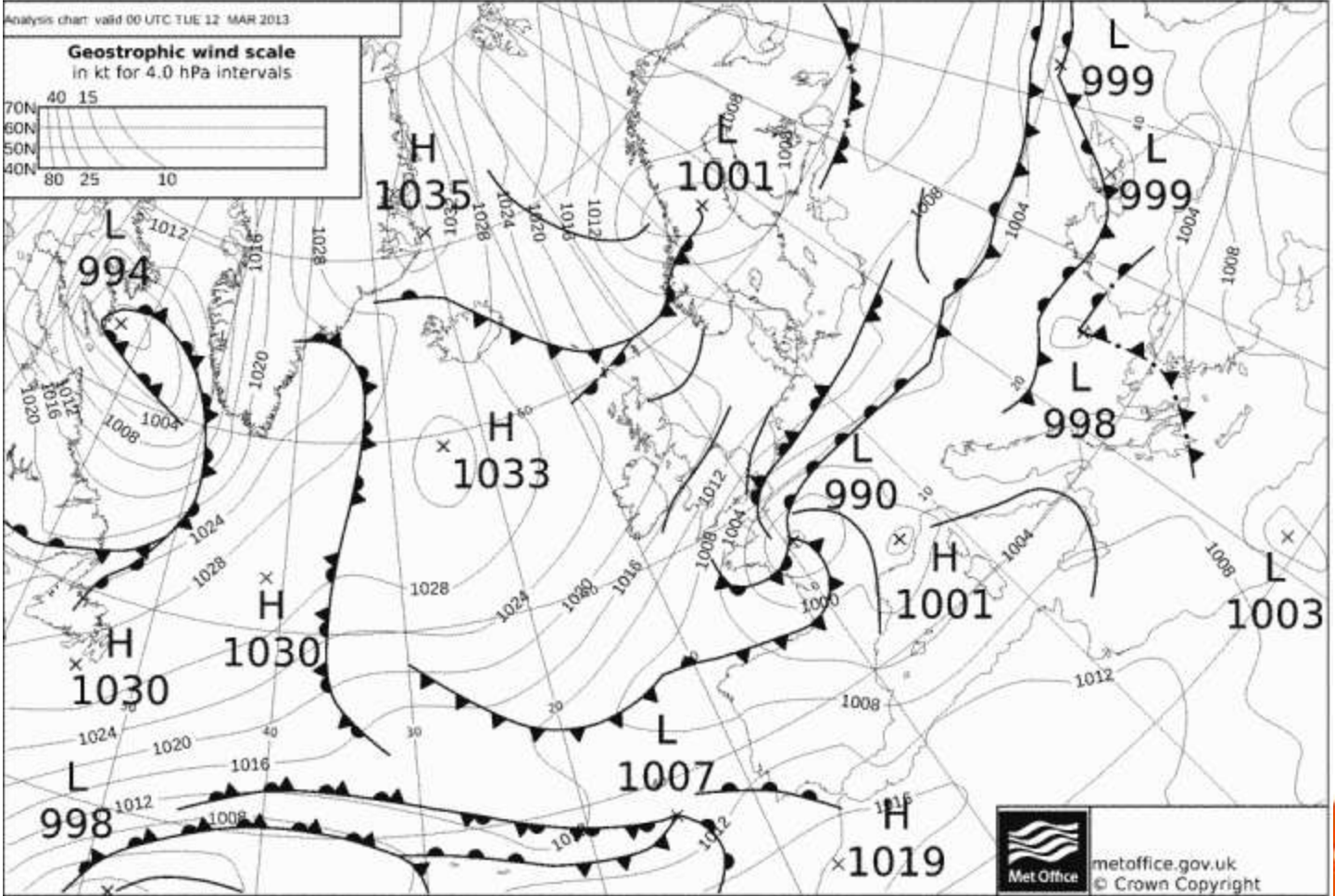
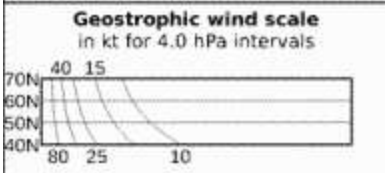
Analyse Fronts et isobares du 12/03/2013 00hUTC (reseau: 12/03/2013 00hUTC)



Analyse Fronts et isobares du 12/03/2013 12hUTC (reseau: 12/03/2013 12hUTC)



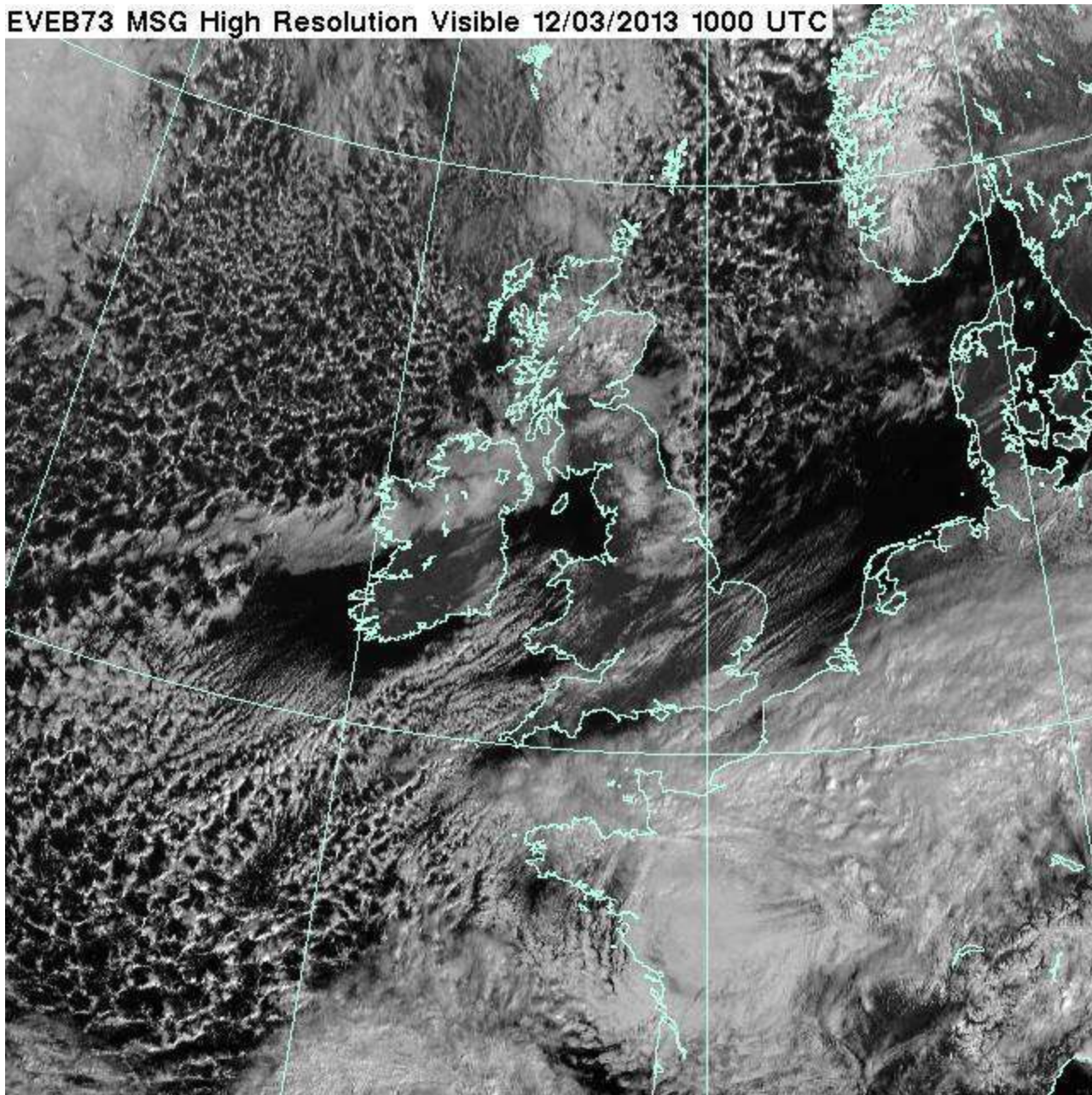
Analysis chart valid 00 UTC TUE 12 MAR 2013



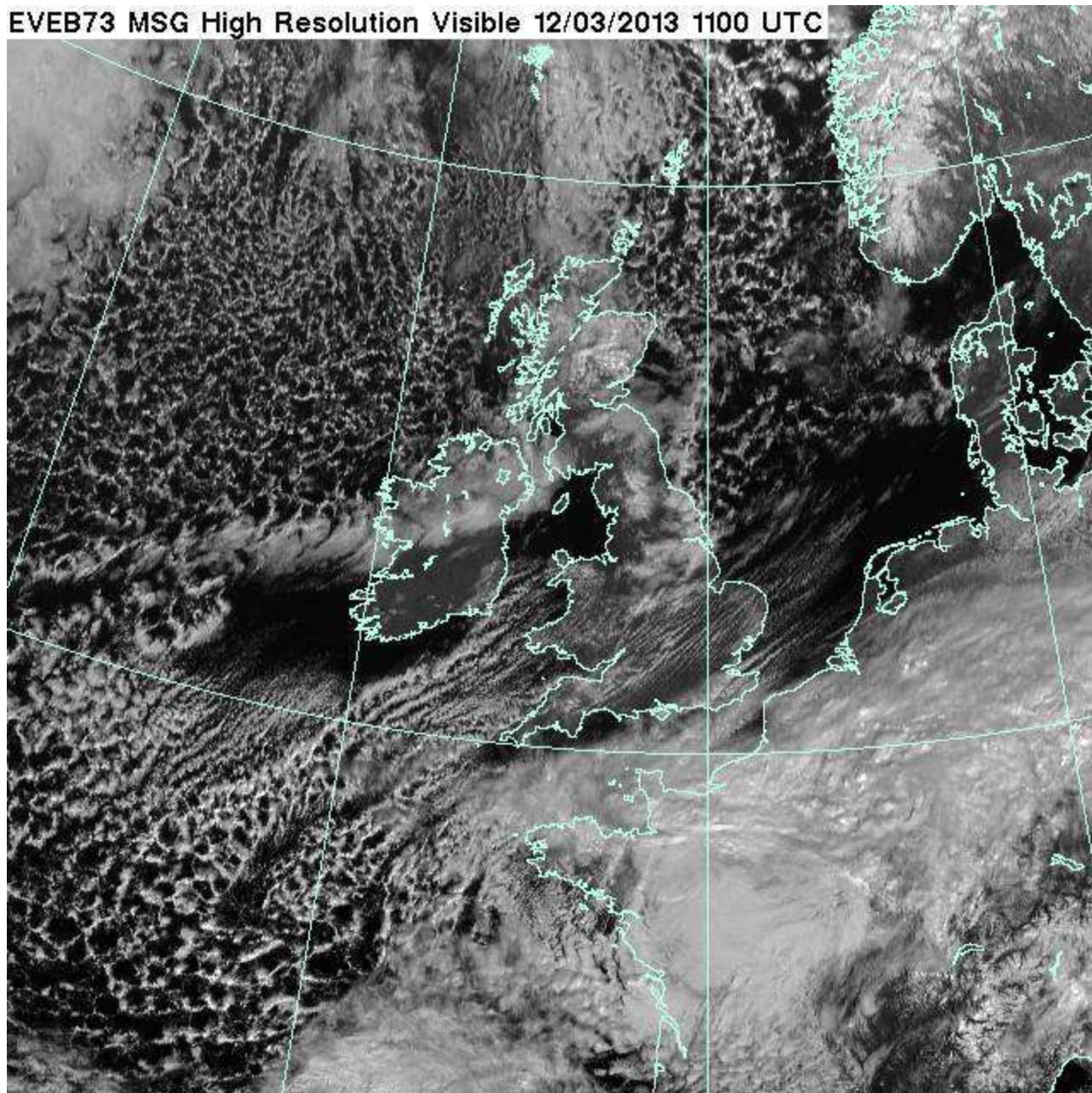
metoffice.gov.uk
© Crown Copyright



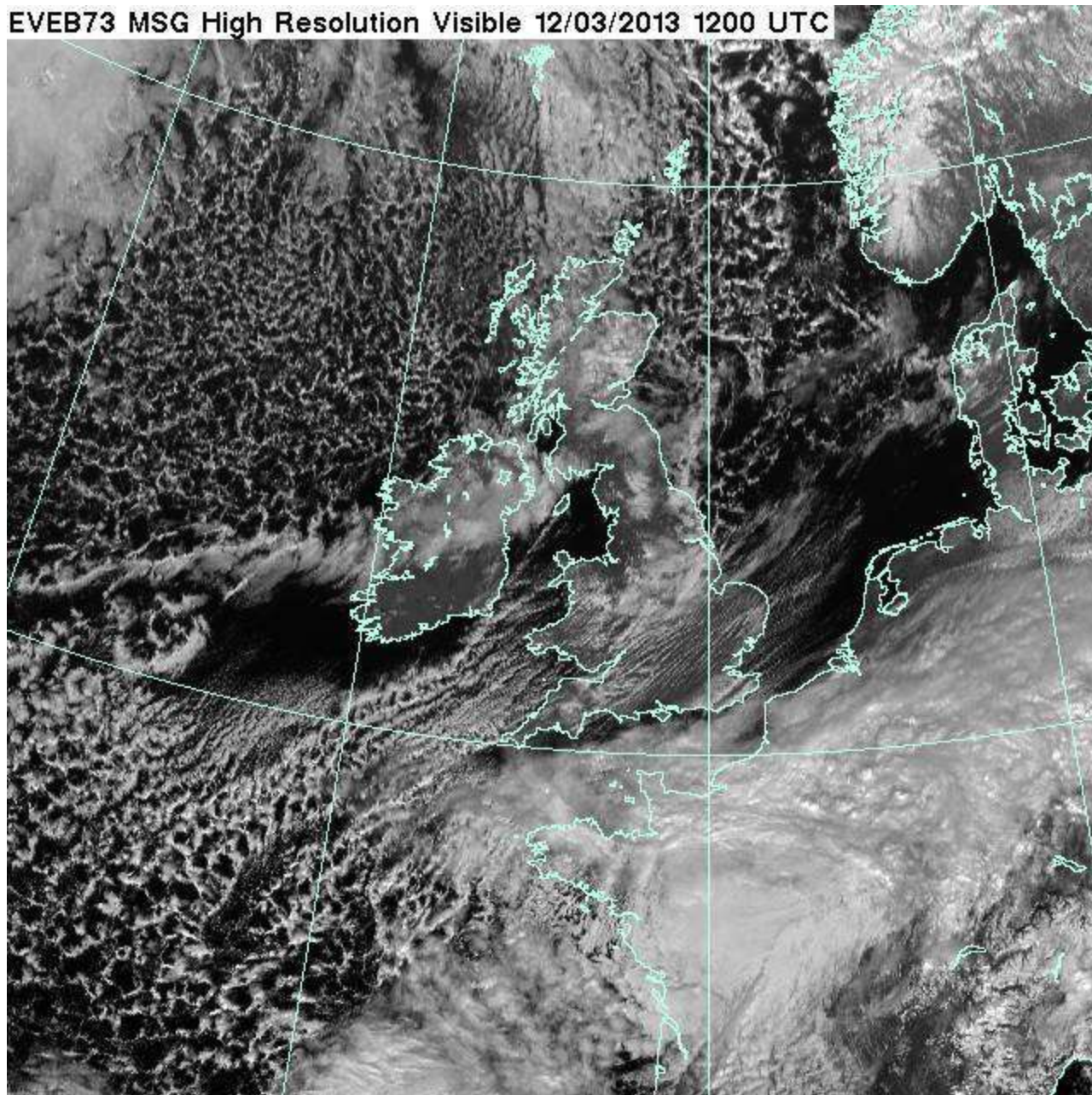
EVEB73 MSG High Resolution Visible 12/03/2013 1000 UTC



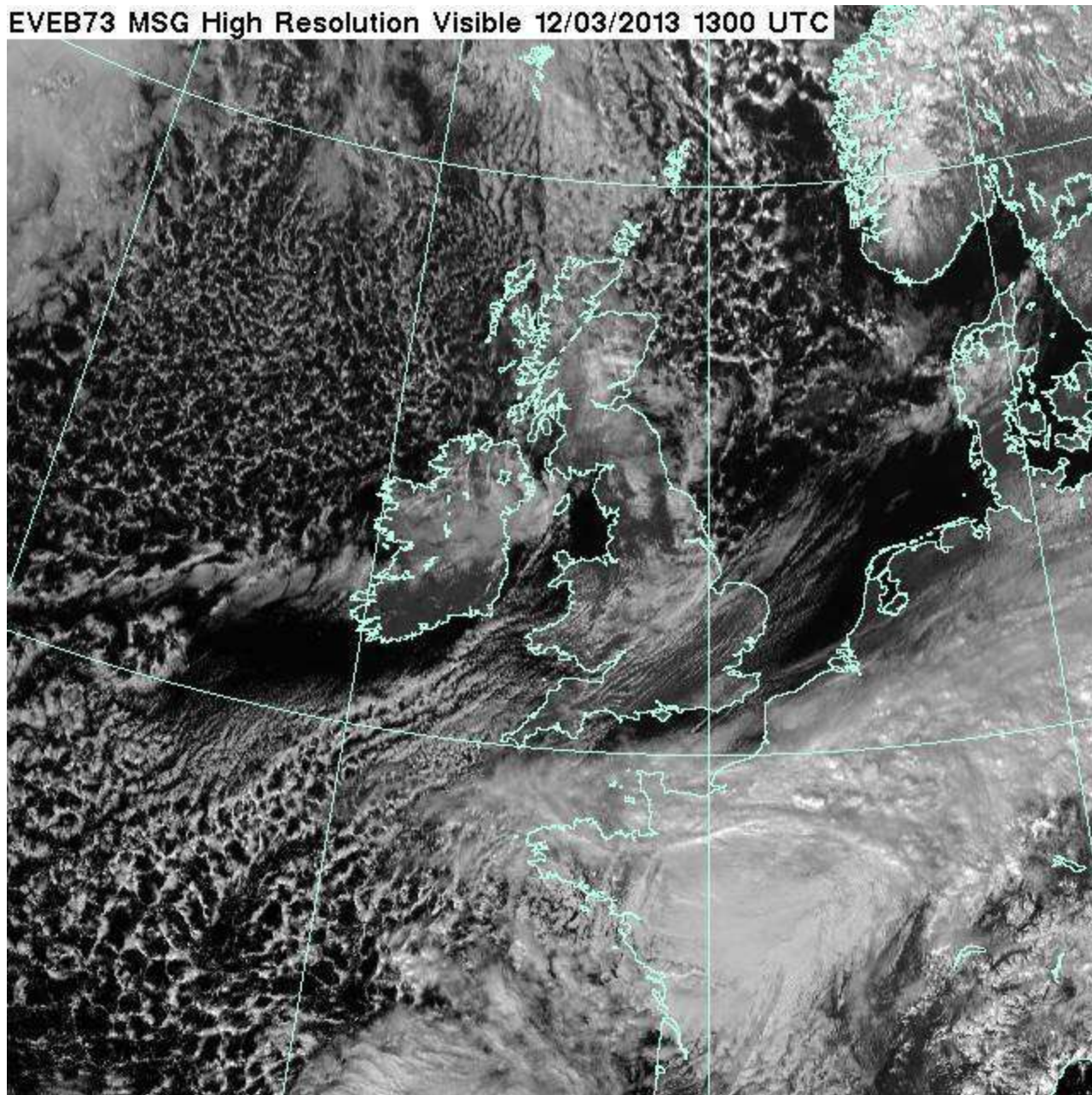
EVEB73 MSG High Resolution Visible 12/03/2013 1100 UTC



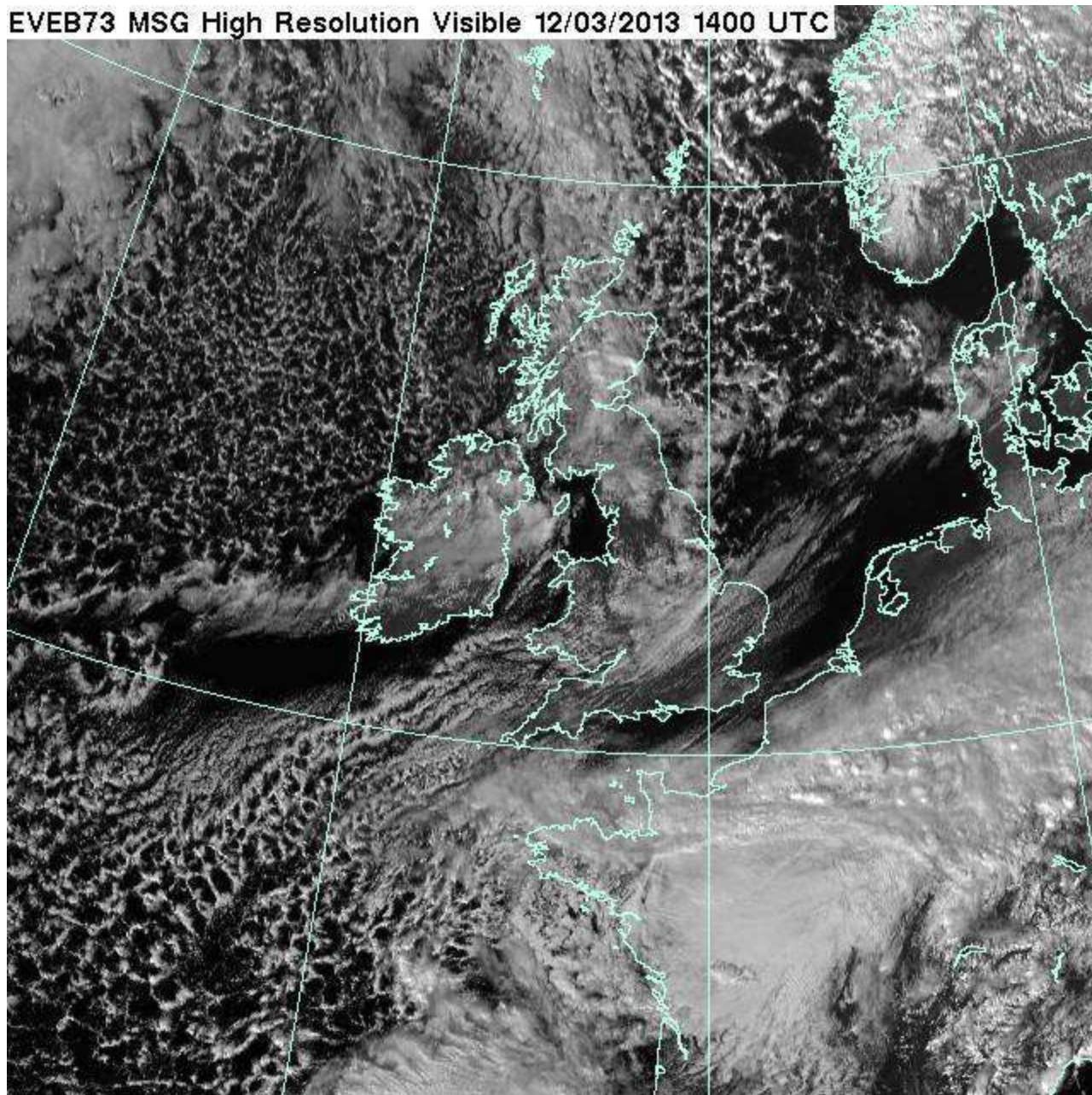
EVEB73 MSG High Resolution Visible 12/03/2013 1200 UTC



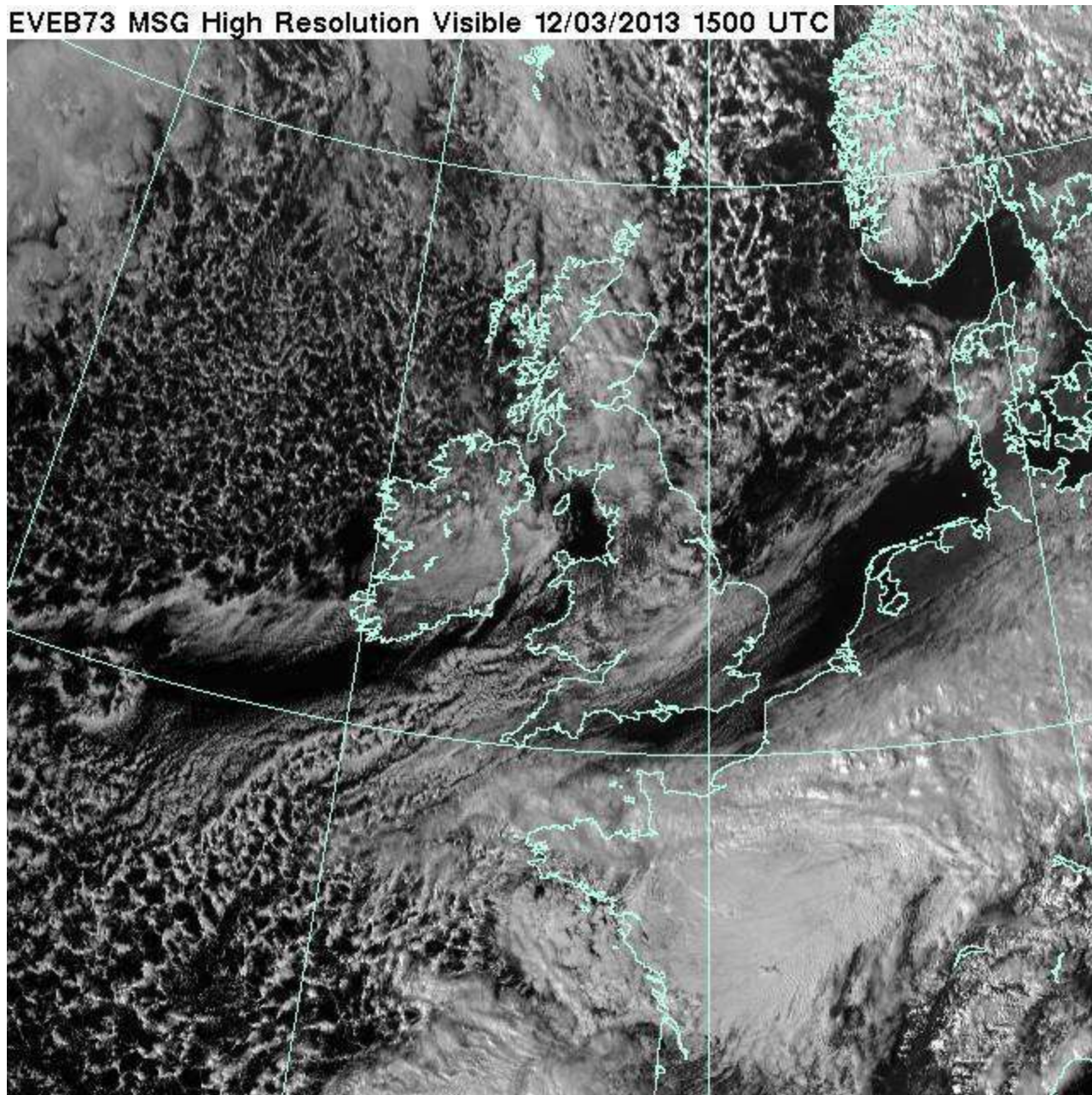
EVEB73 MSG High Resolution Visible 12/03/2013 1300 UTC



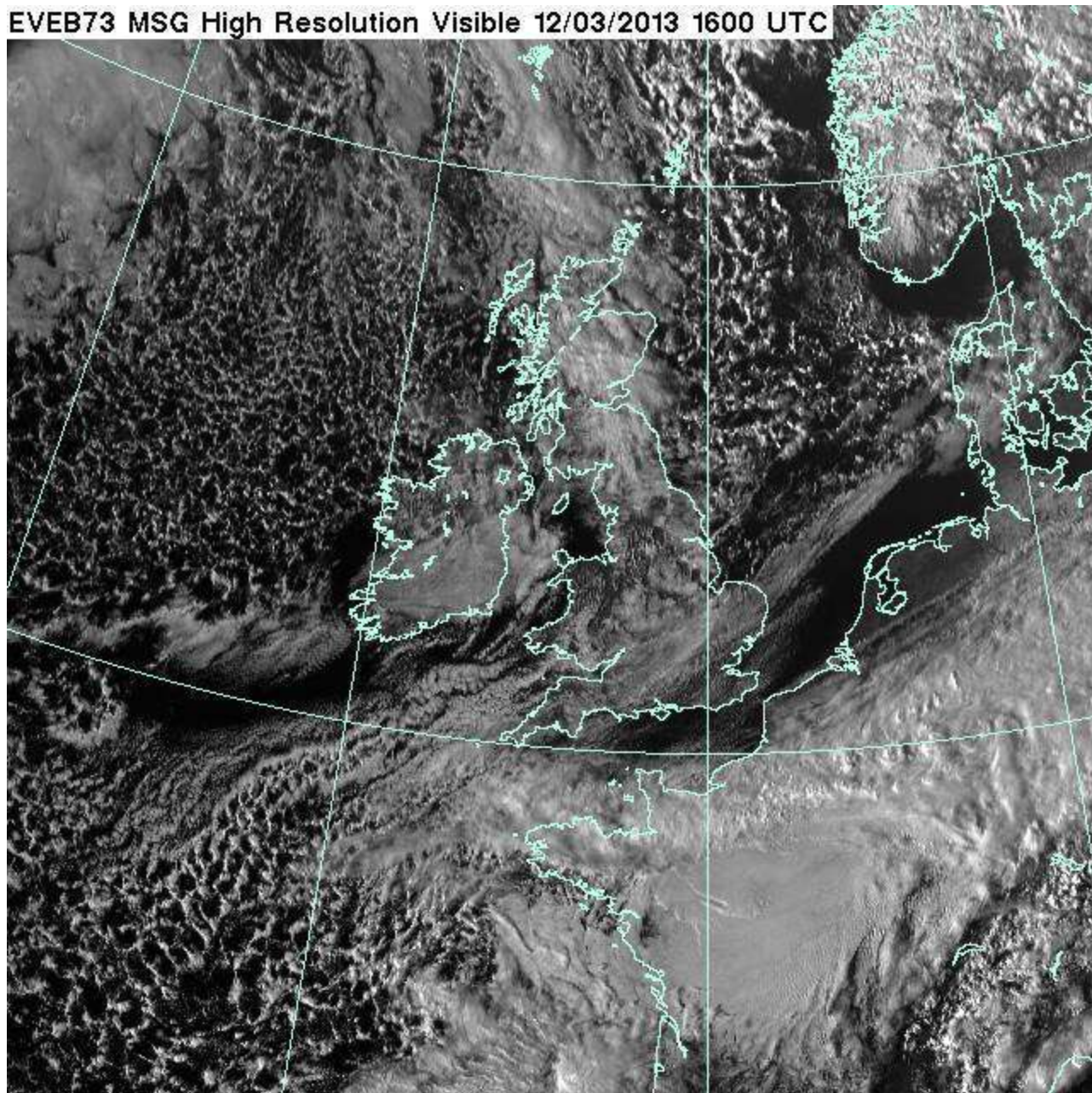
EVEB73 MSG High Resolution Visible 12/03/2013 1400 UTC



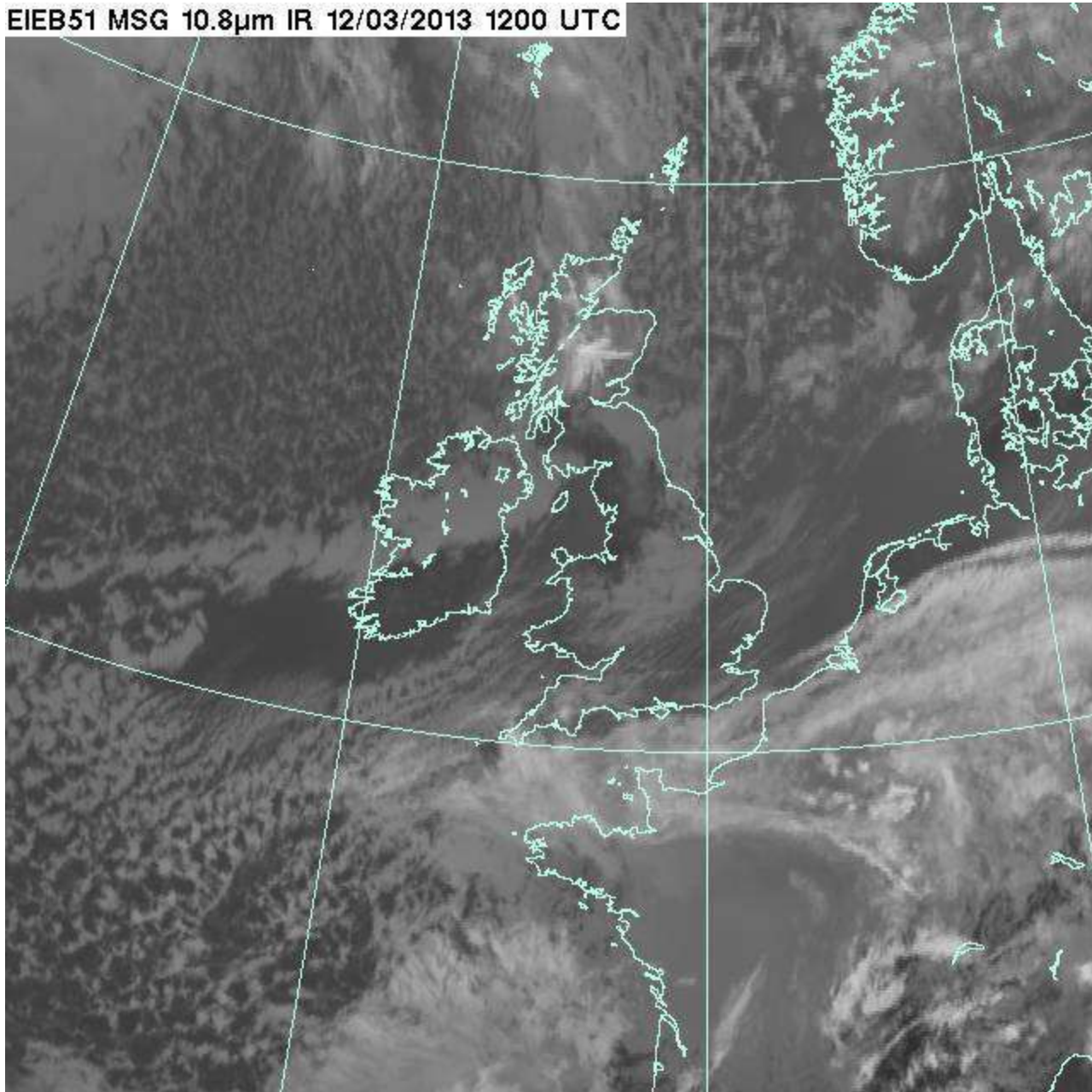
EVEB73 MSG High Resolution Visible 12/03/2013 1500 UTC



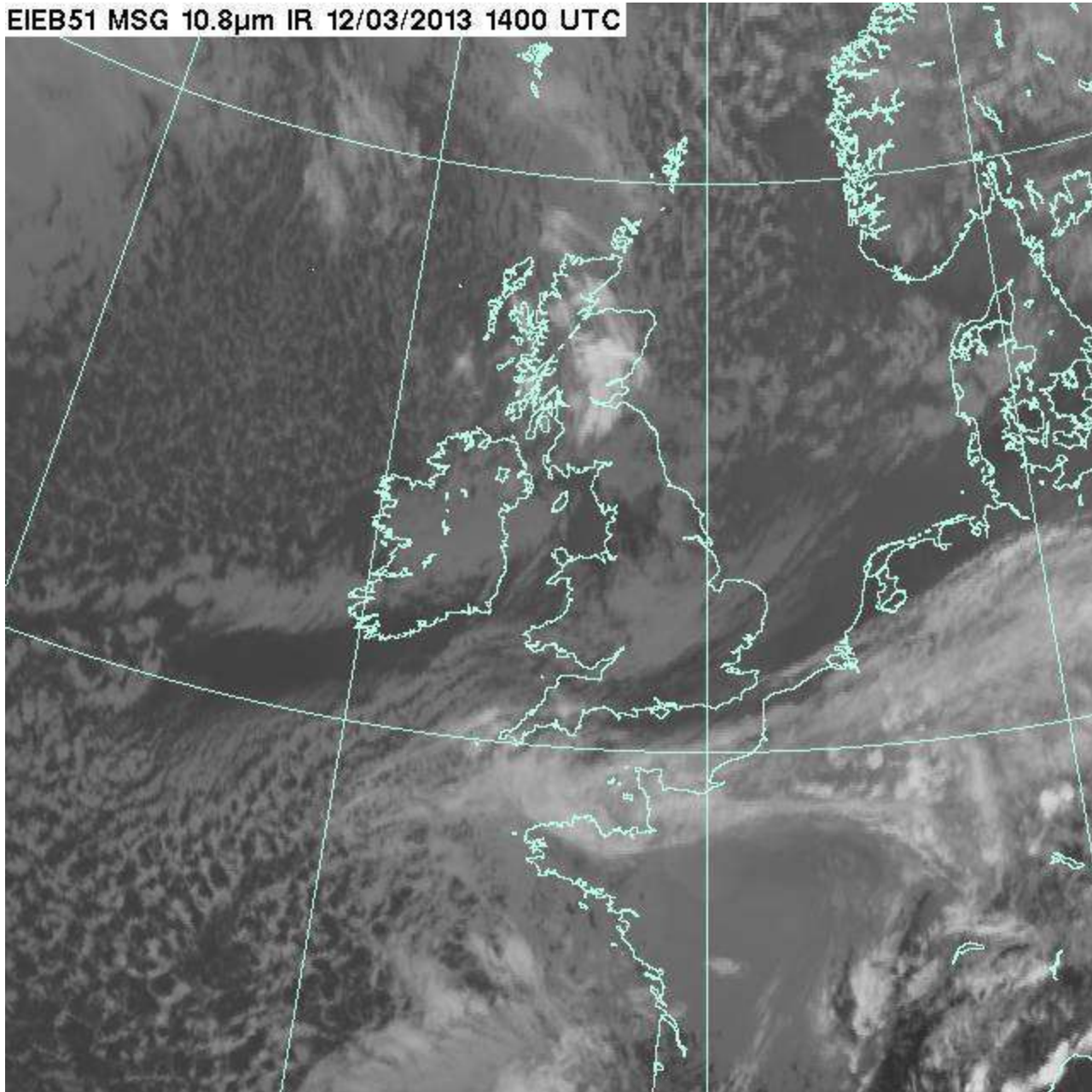
EVEB73 MSG High Resolution Visible 12/03/2013 1600 UTC



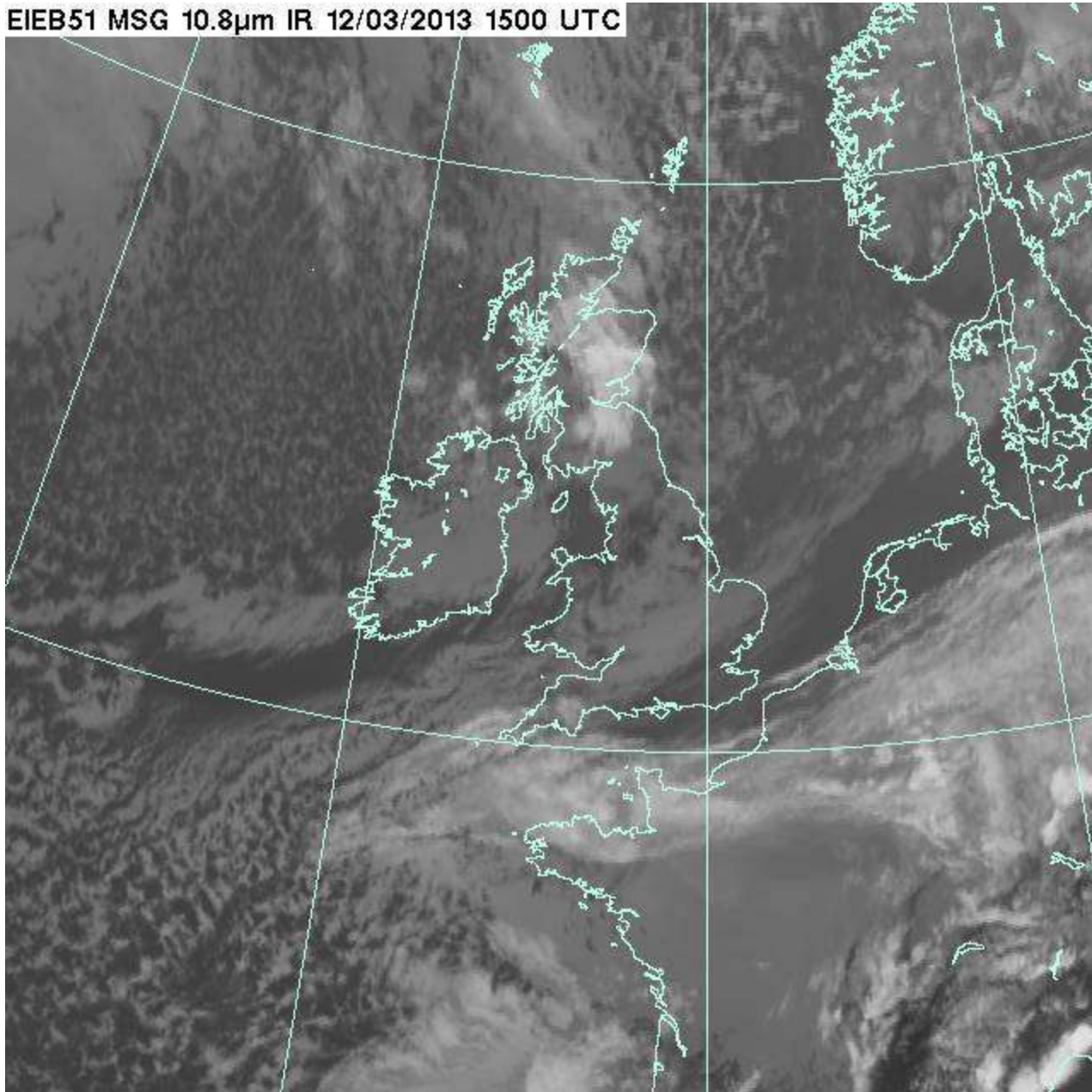
EIEB51 MSG 10.8µm IR 12/03/2013 1200 UTC



EIEB51 MSG 10.8µm IR 12/03/2013 1400 UTC



EIEB51 MSG 10.8µm IR 12/03/2013 1500 UTC



mardi
15H00

mardi
15H15

mardi
15H30

mardi
15H45

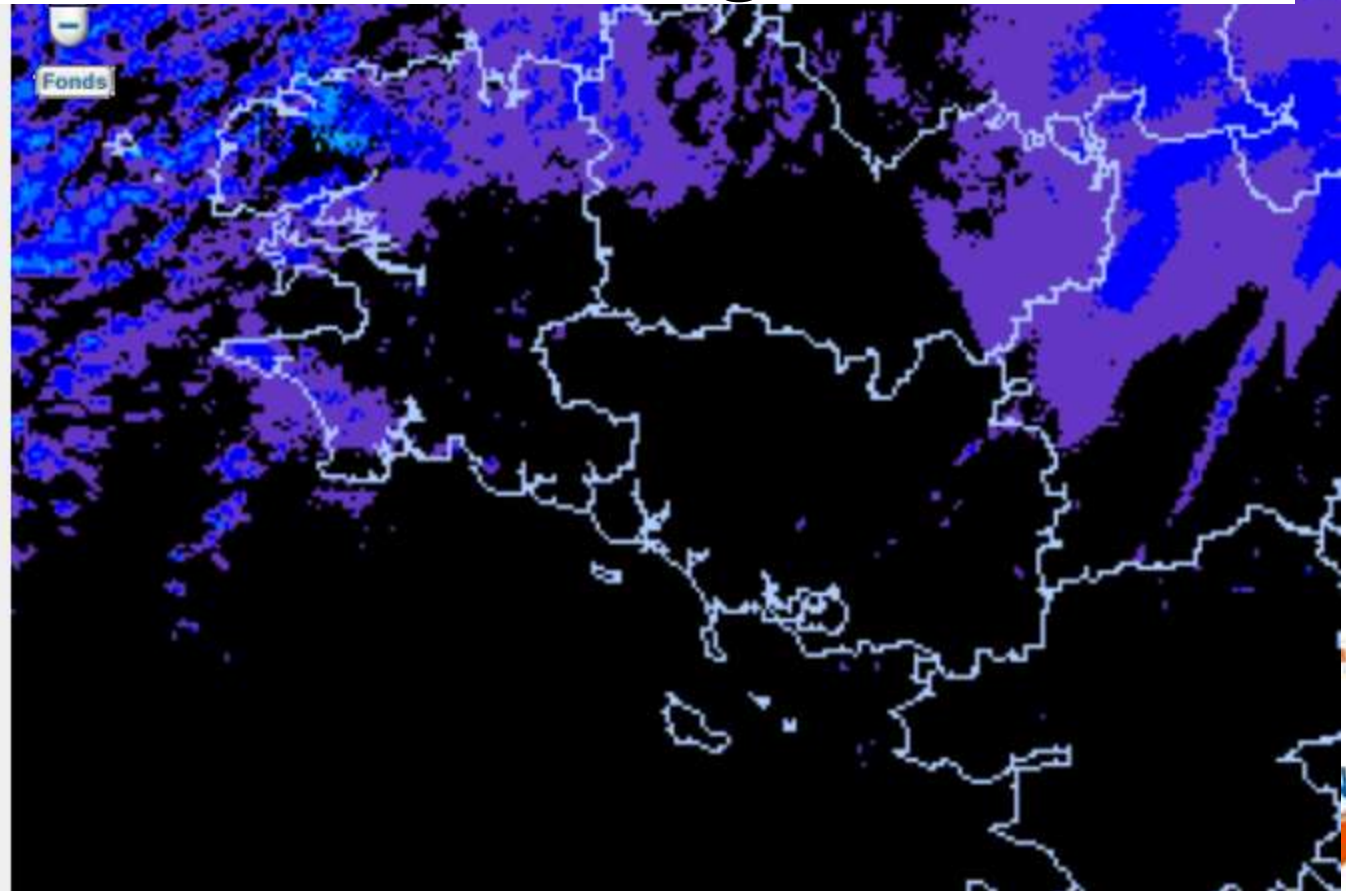
mardi
16H00

mardi
16H15



<0.4 <0.6 <1.2 <2.1 <3.7 <6.5 <12 <21 <37 <65 <120 <210 >370 mm/h mask

Peu de précipitations: un peu de grêle
et flocon de neige



Scénario(s) prévu(s) pour MARDI 12 MARS

Ciel: nuageux avec qqes flocons

Vent: Nord, 18/22nds, rafales 25/35nds

Mer: peu agitée

Températures : mini 1°/maxi 4°

Température de l'eau : 10°

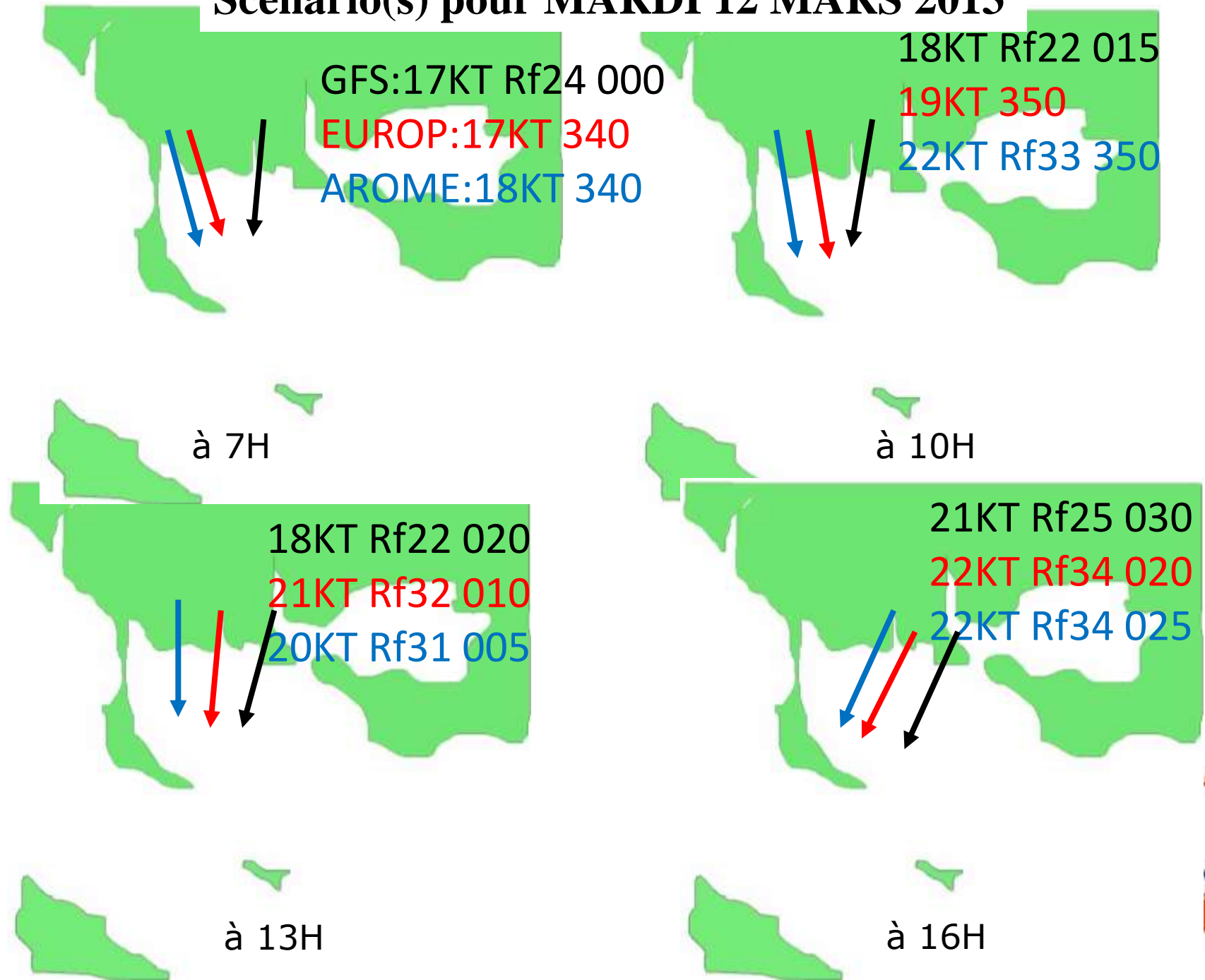
T°ressentie l'aprem: -4°

Courant: BM 11H15 - PM 17H18 **COEF** 103

Soleil : Lever 7H32 - Coucher 19H11

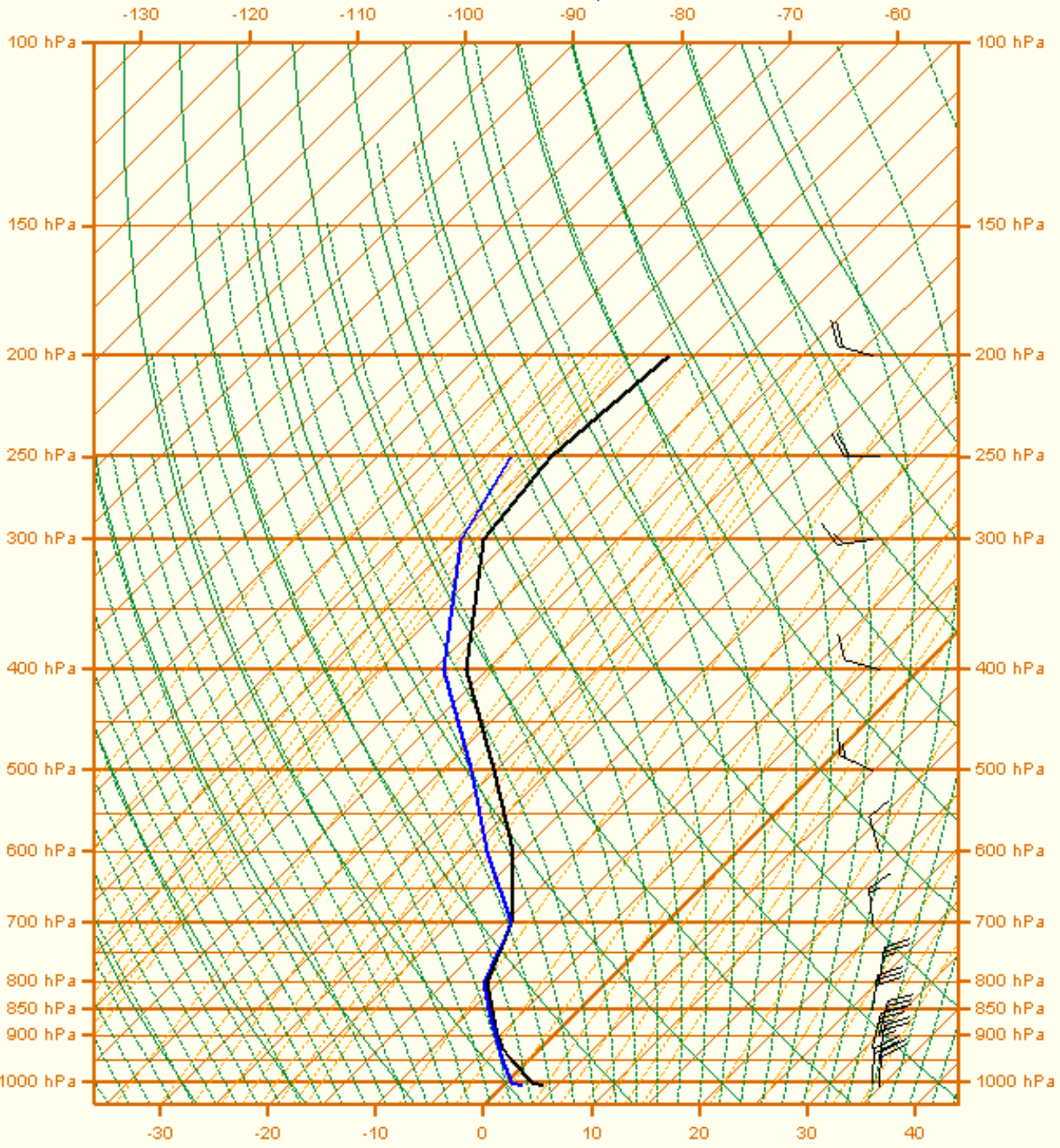


Scénario(s) pour MARDI 12 MARS 2013



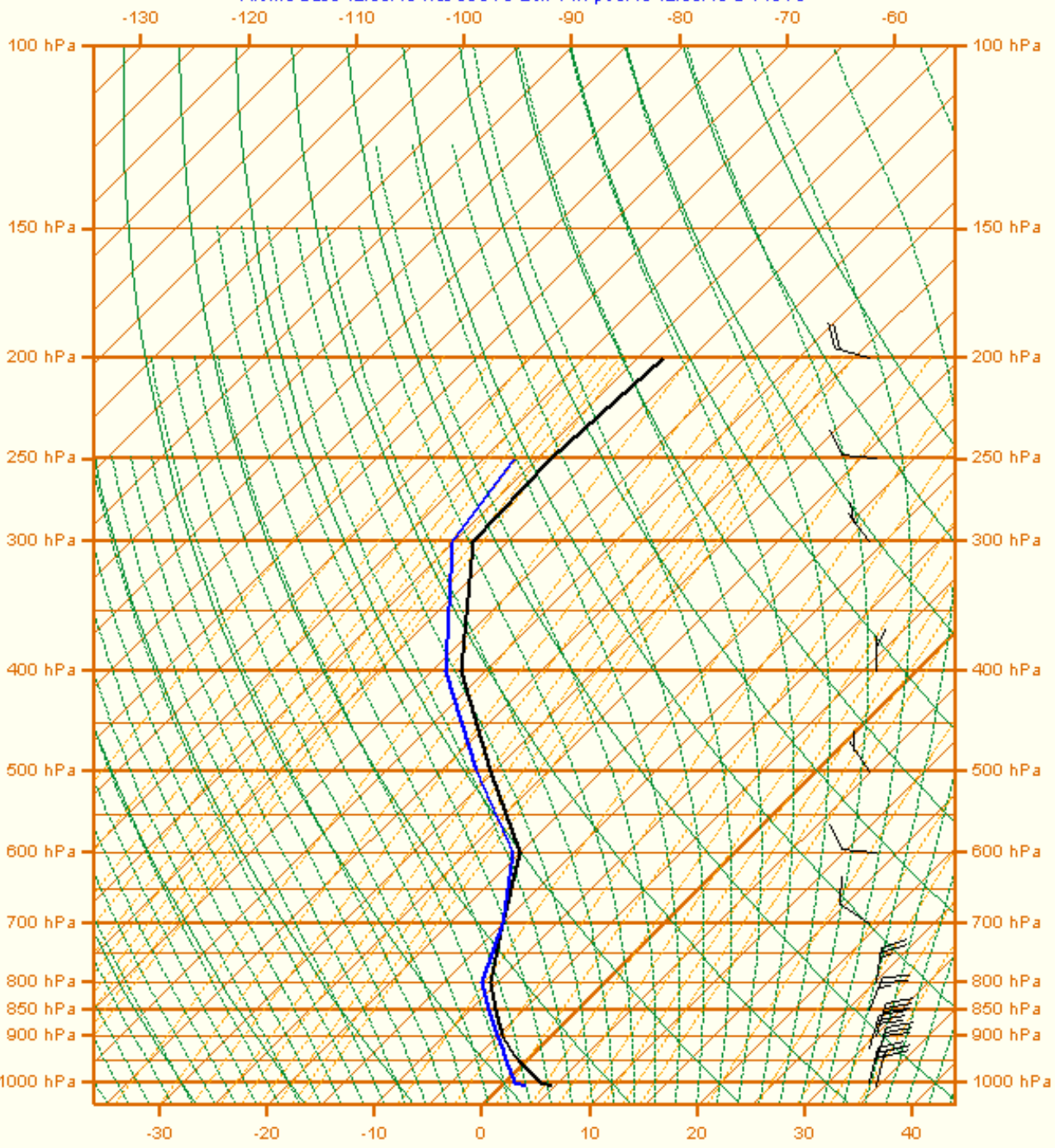
[QUIBERON]

Arôme Base 12/03/13 Rés 00UTC Ech 10H pour le 12/03/13 à 10UTC

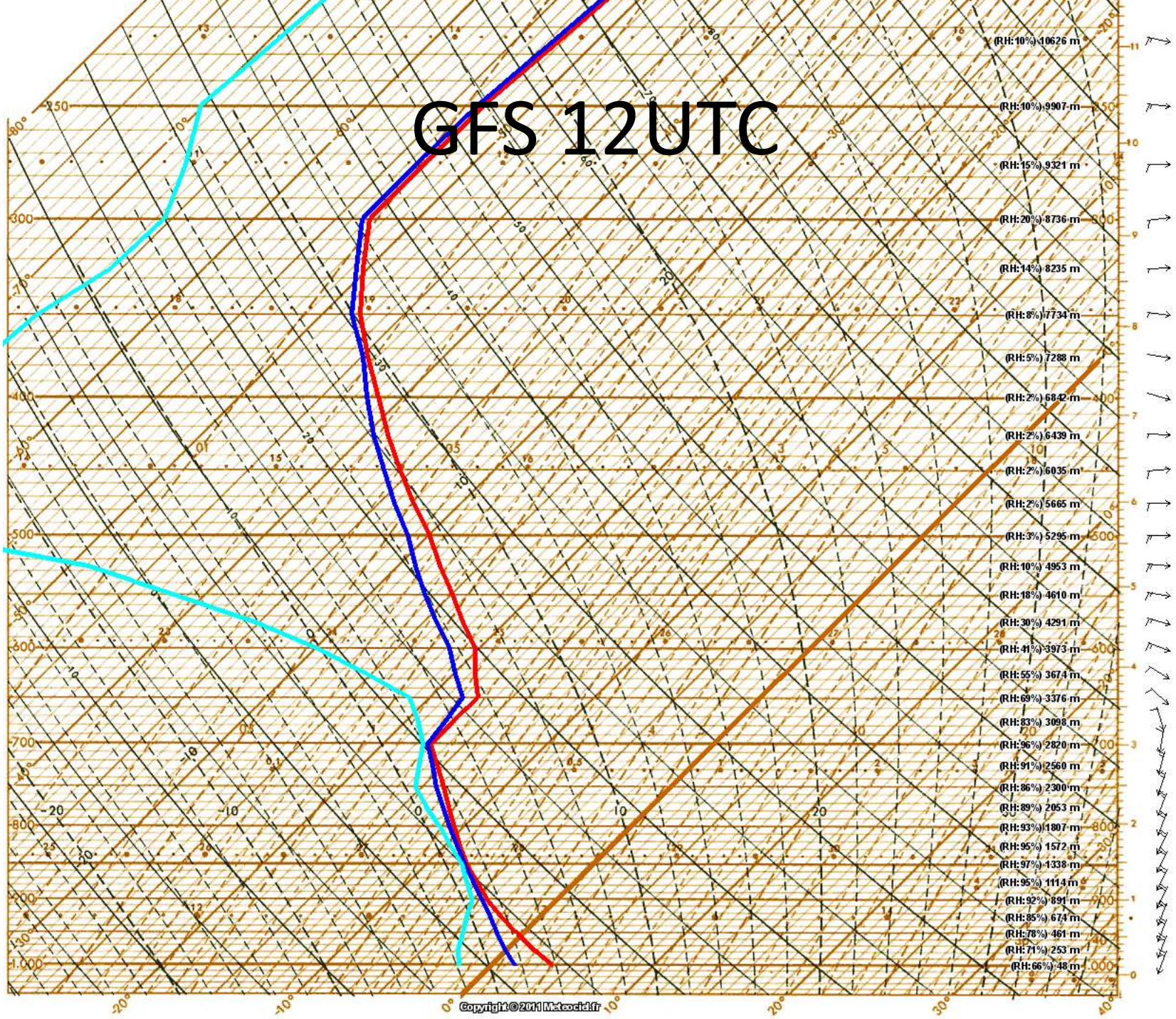


[QUIBERON]

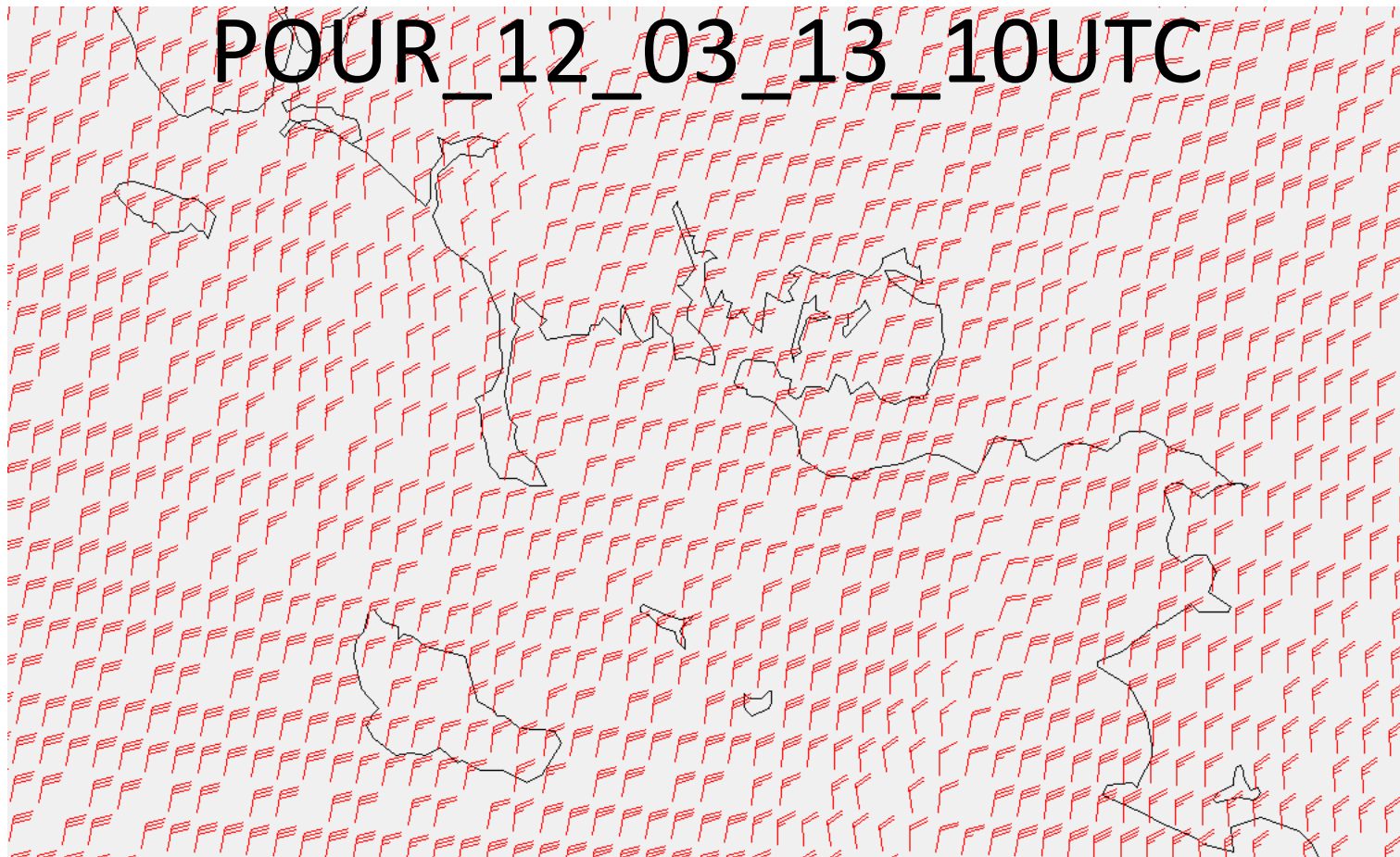
Arôme Base 12/03/13 Rés 00UTC Ech 14H pour le 12/03/13 à 14UTC



GFS 12UTC



VENT_250_M_ARÔ_
BASE_12_03_13_00UTC_ECH_10H_



VENT_250_M_ARÔ_
BASE_12_03_13_00UTC_ECH_14H_

