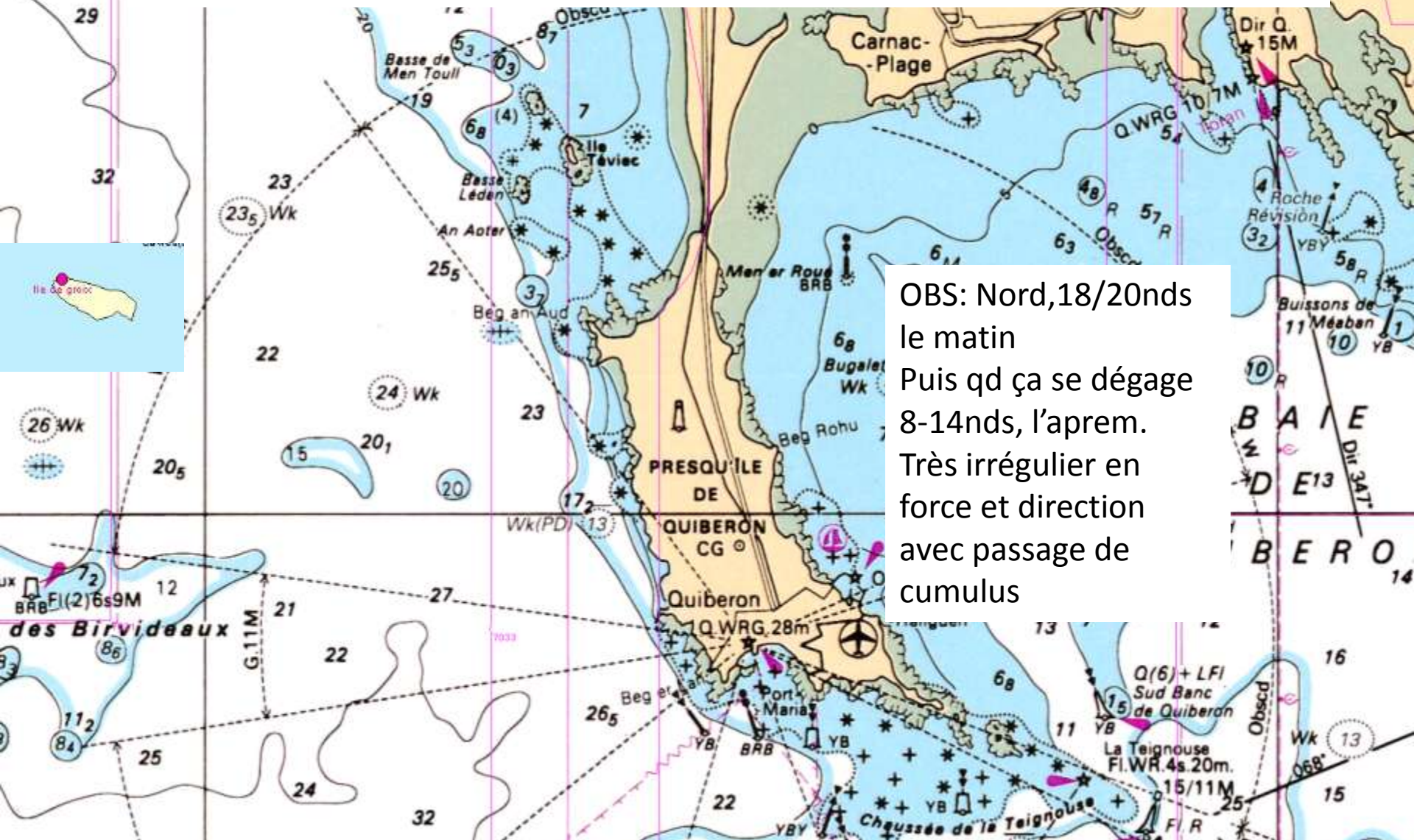


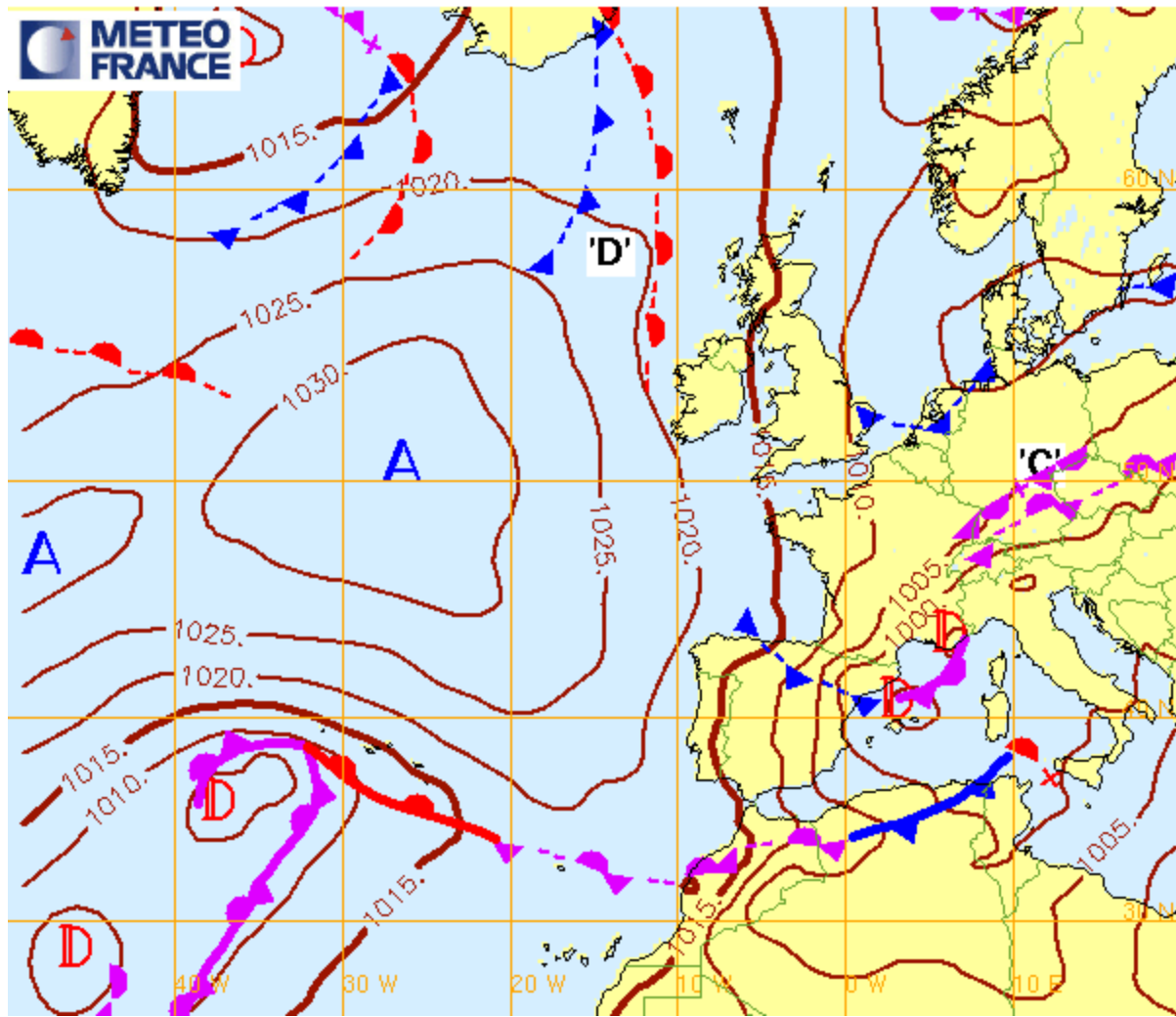
DEBRIEF

MERCREDI 13 MARS 2013



OBS: Nord, 18/20nds
le matin
Puis qd ça se dégage
8-14nds, l'après-m.
Très irrégulier en
force et direction
avec passage de
cumulus

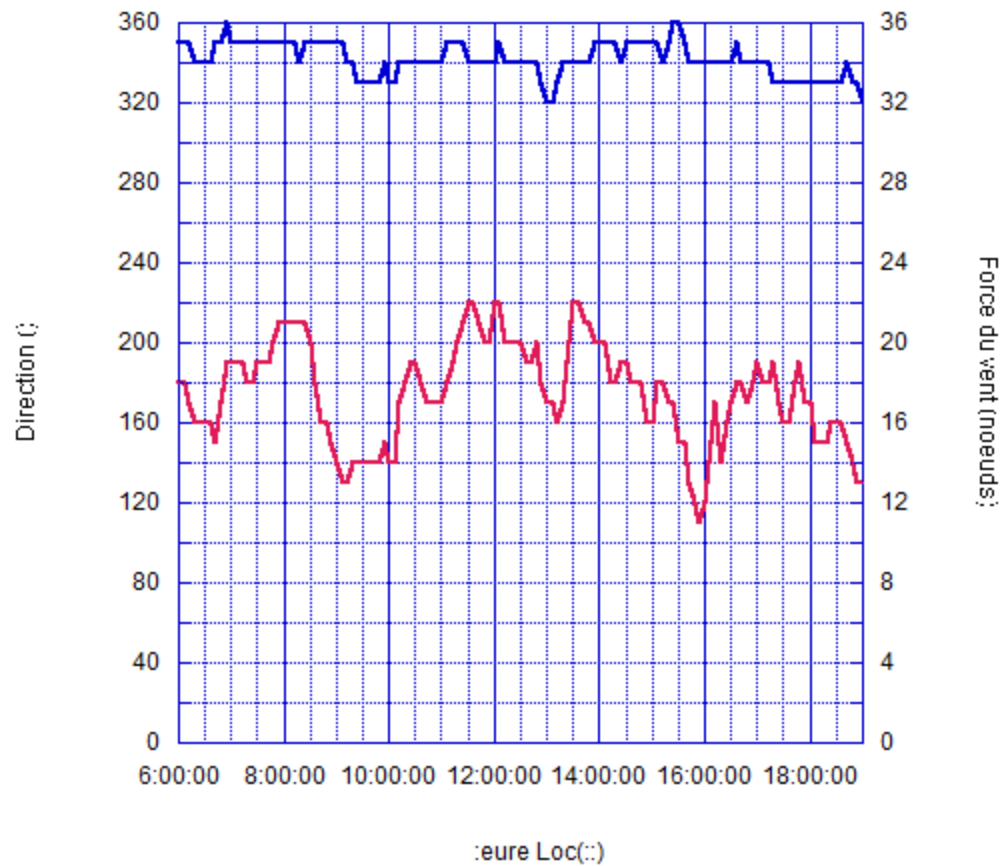
Analyse Fronts et isobares du 13/03/2013 12hUTC (reseau: 13/03/2013 12hUTC)



— Direction (°)

— Force du vent (noeuds)

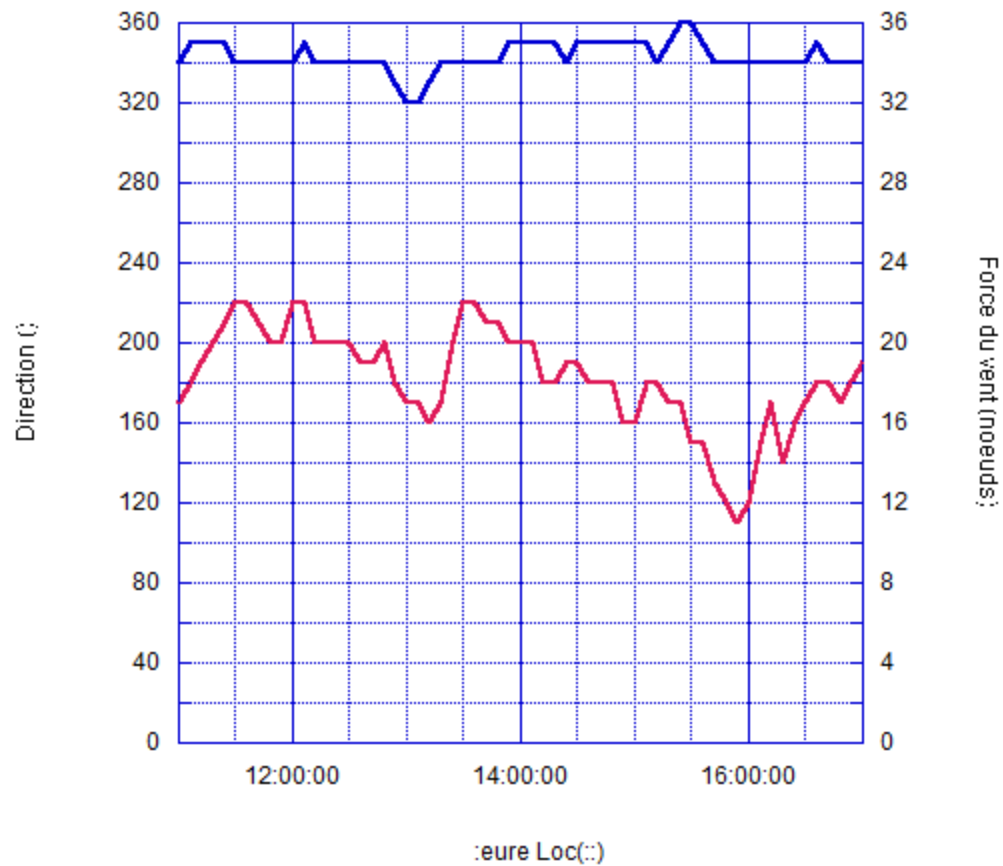
20130313GX



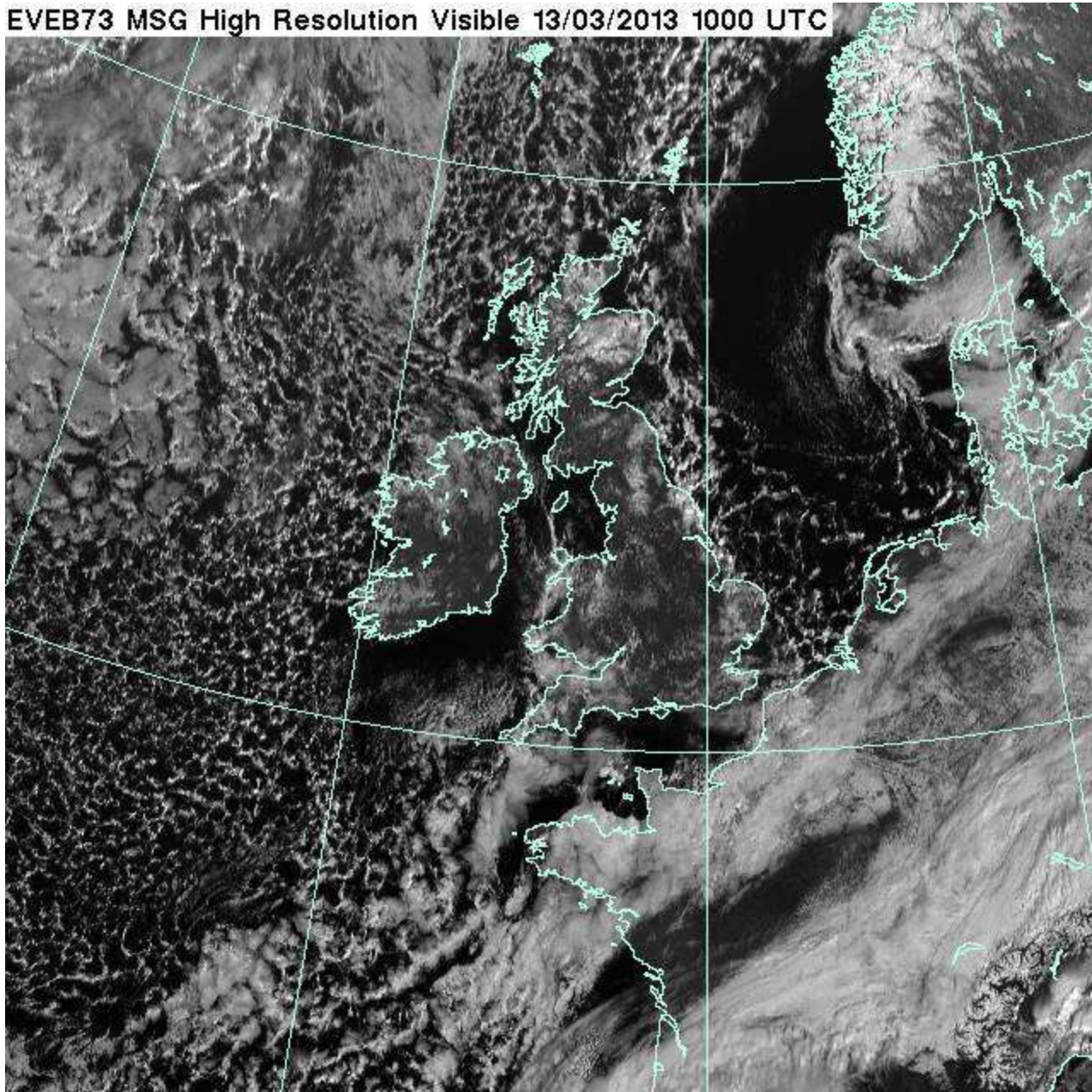
— Direction (°)

— Force du vent (nœuds)

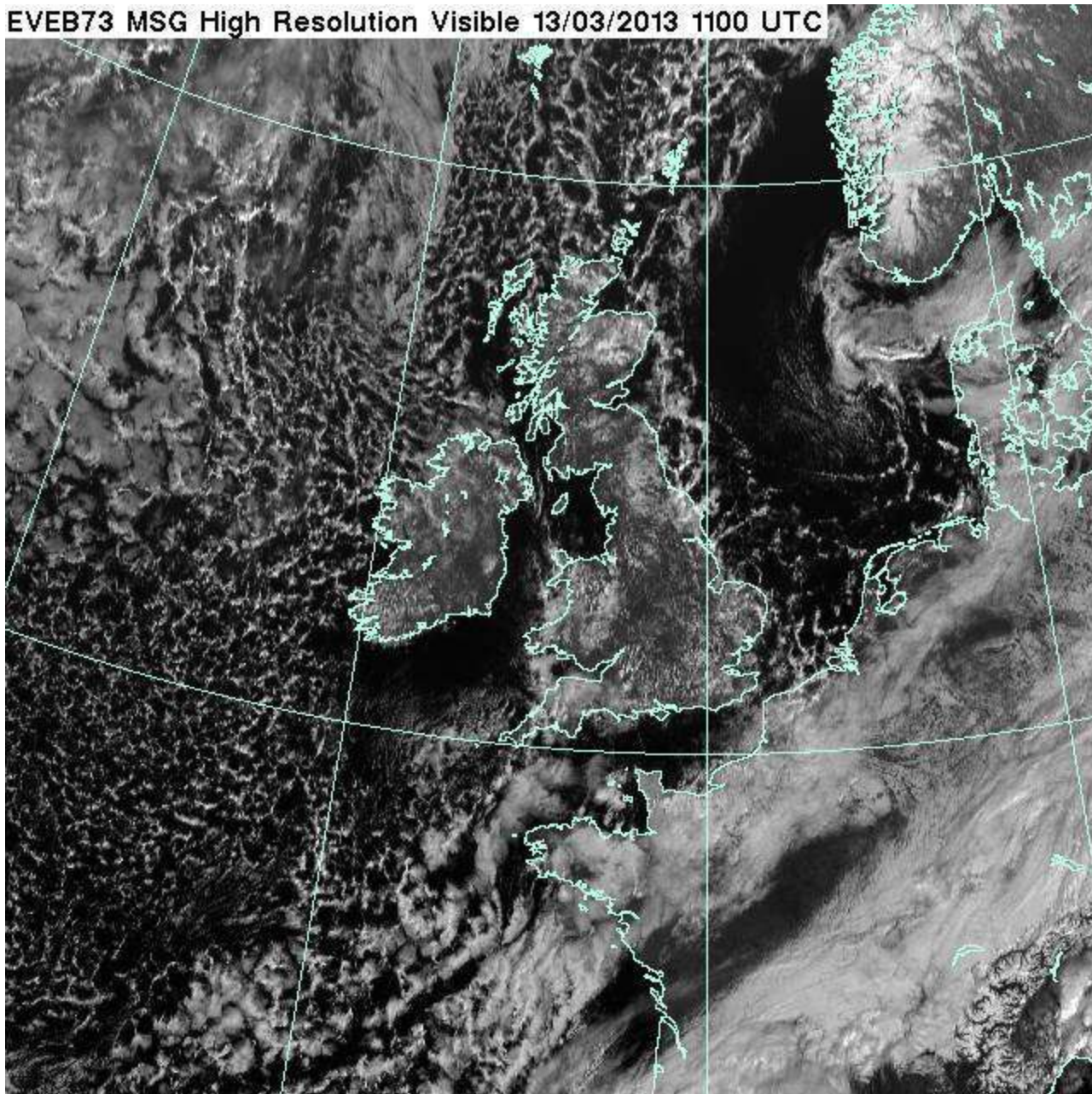
20130313GX



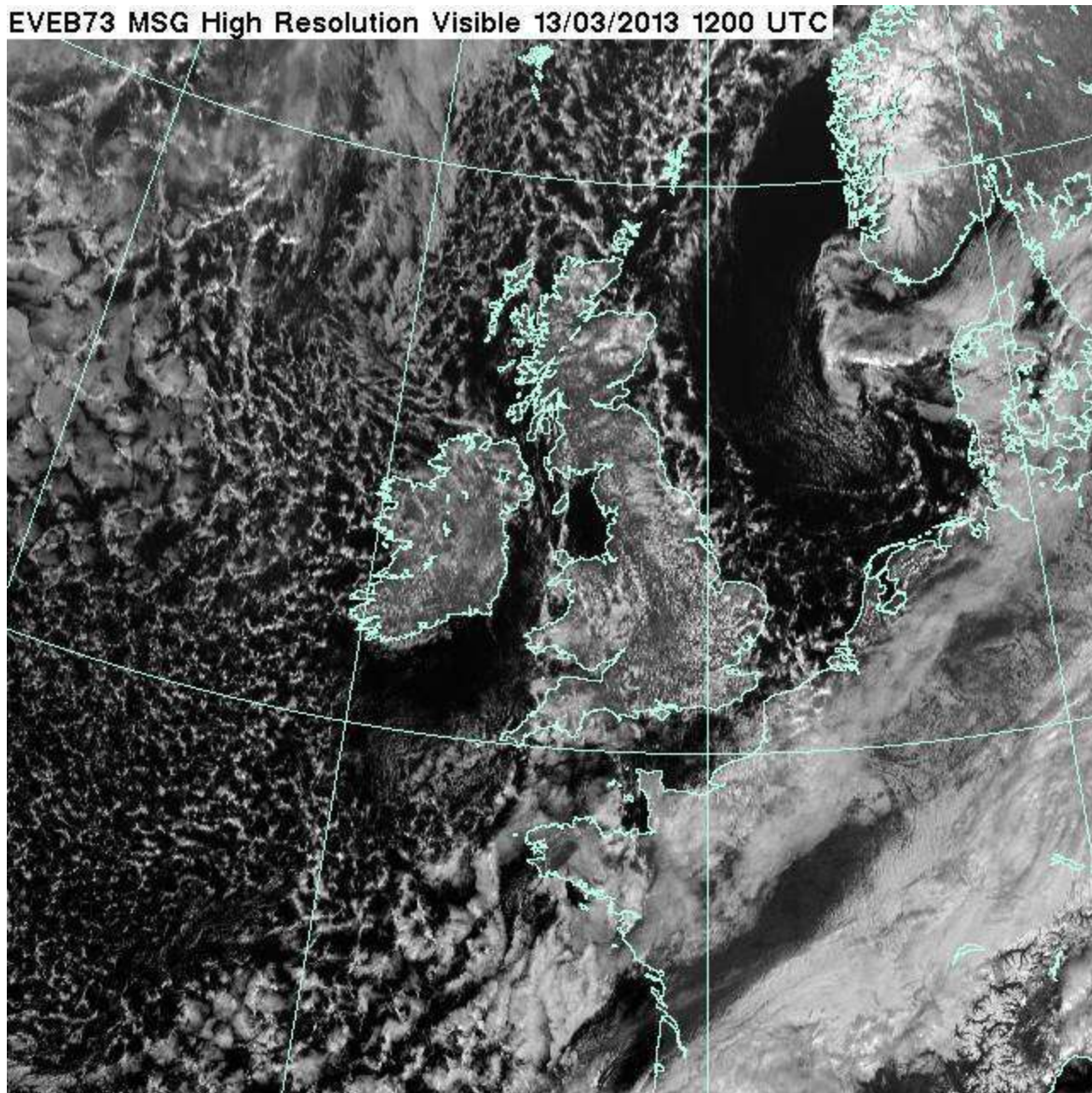
EVEB73 MSG High Resolution Visible 13/03/2013 1000 UTC



EVEB73 MSG High Resolution Visible 13/03/2013 1100 UTC



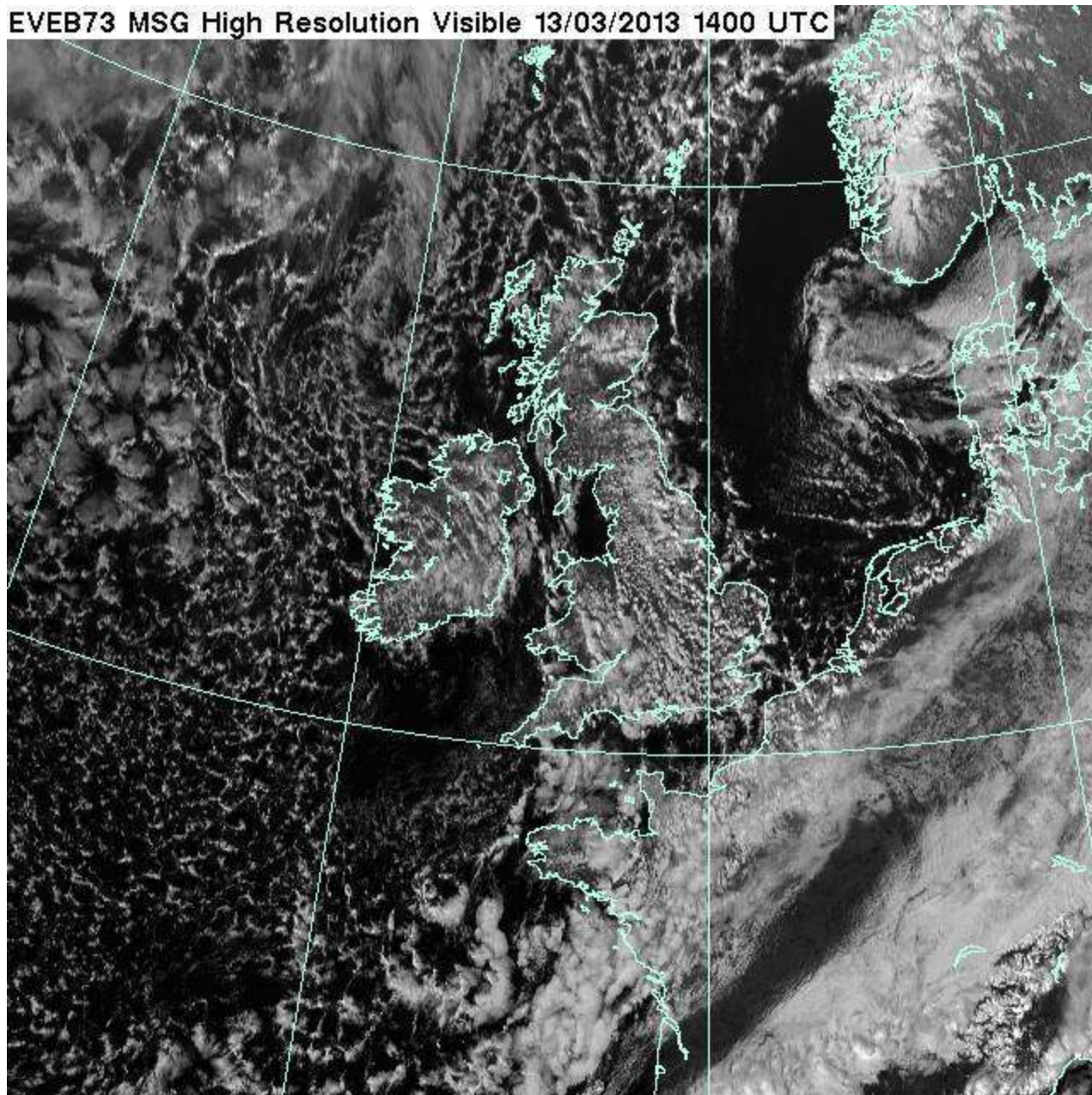
EVEB73 MSG High Resolution Visible 13/03/2013 1200 UTC



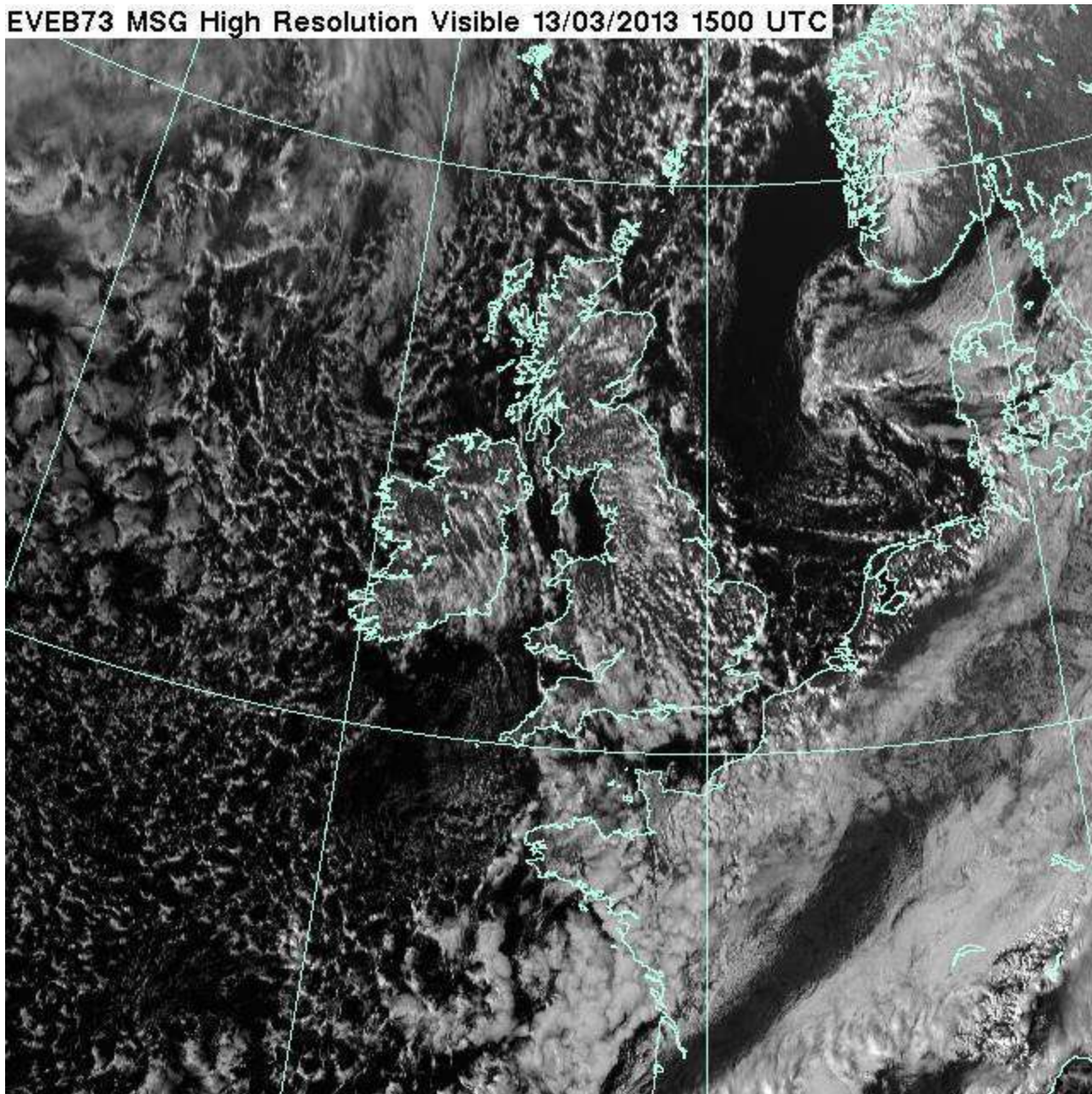
EVEB73 MSG High Resolution Visible 13/03/2013 1300 UTC



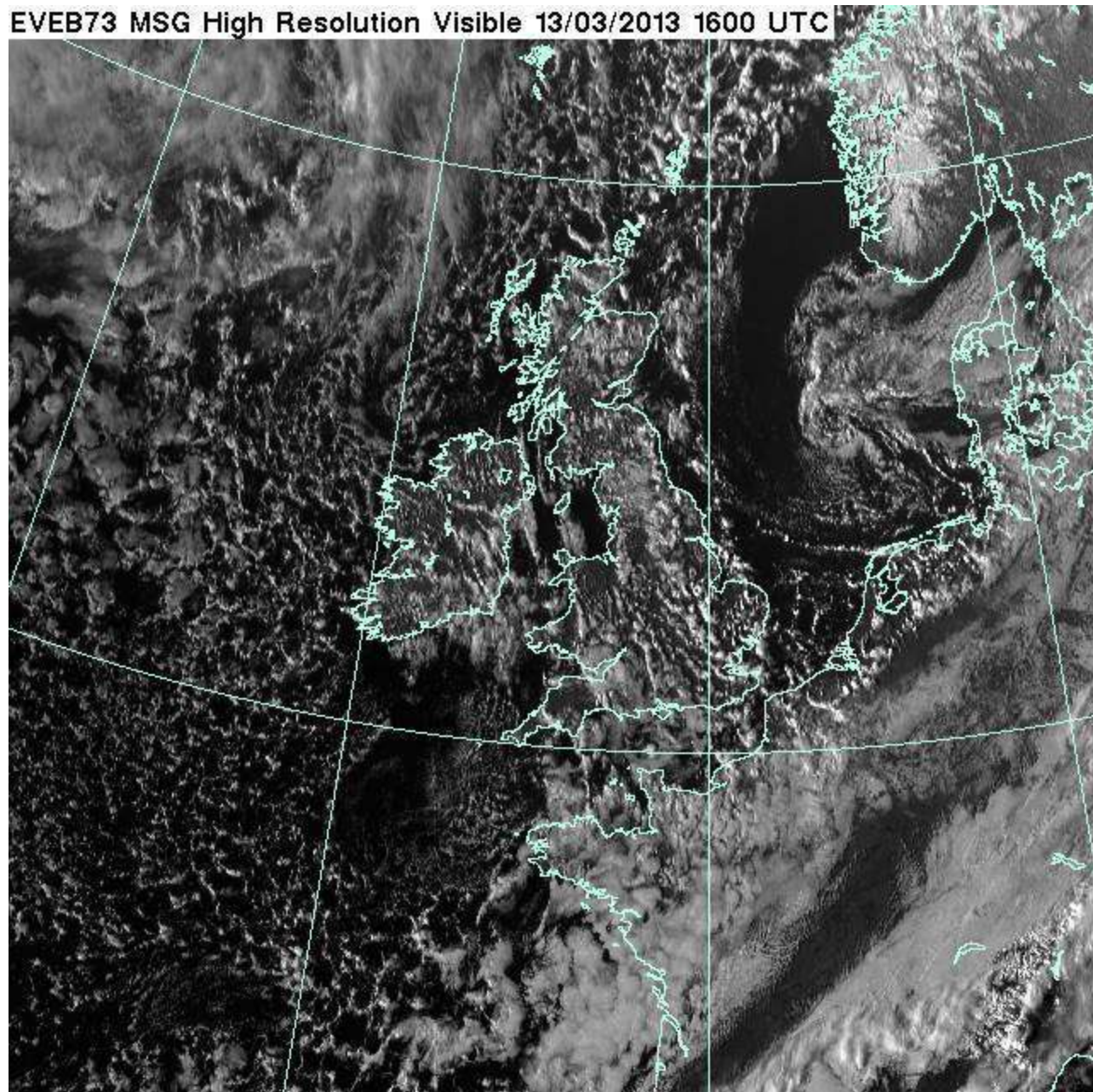
EVEB73 MSG High Resolution Visible 13/03/2013 1400 UTC



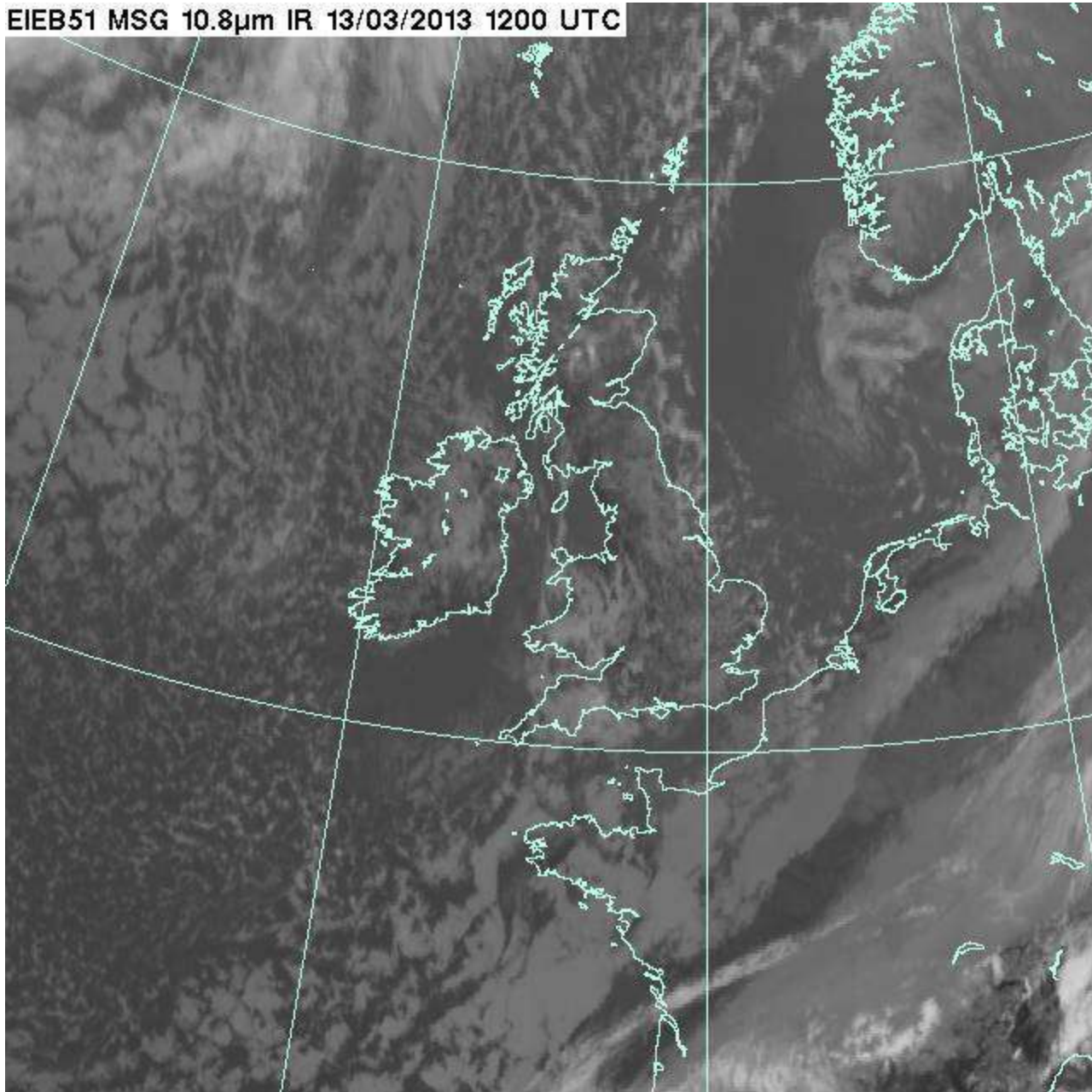
EVEB73 MSG High Resolution Visible 13/03/2013 1500 UTC



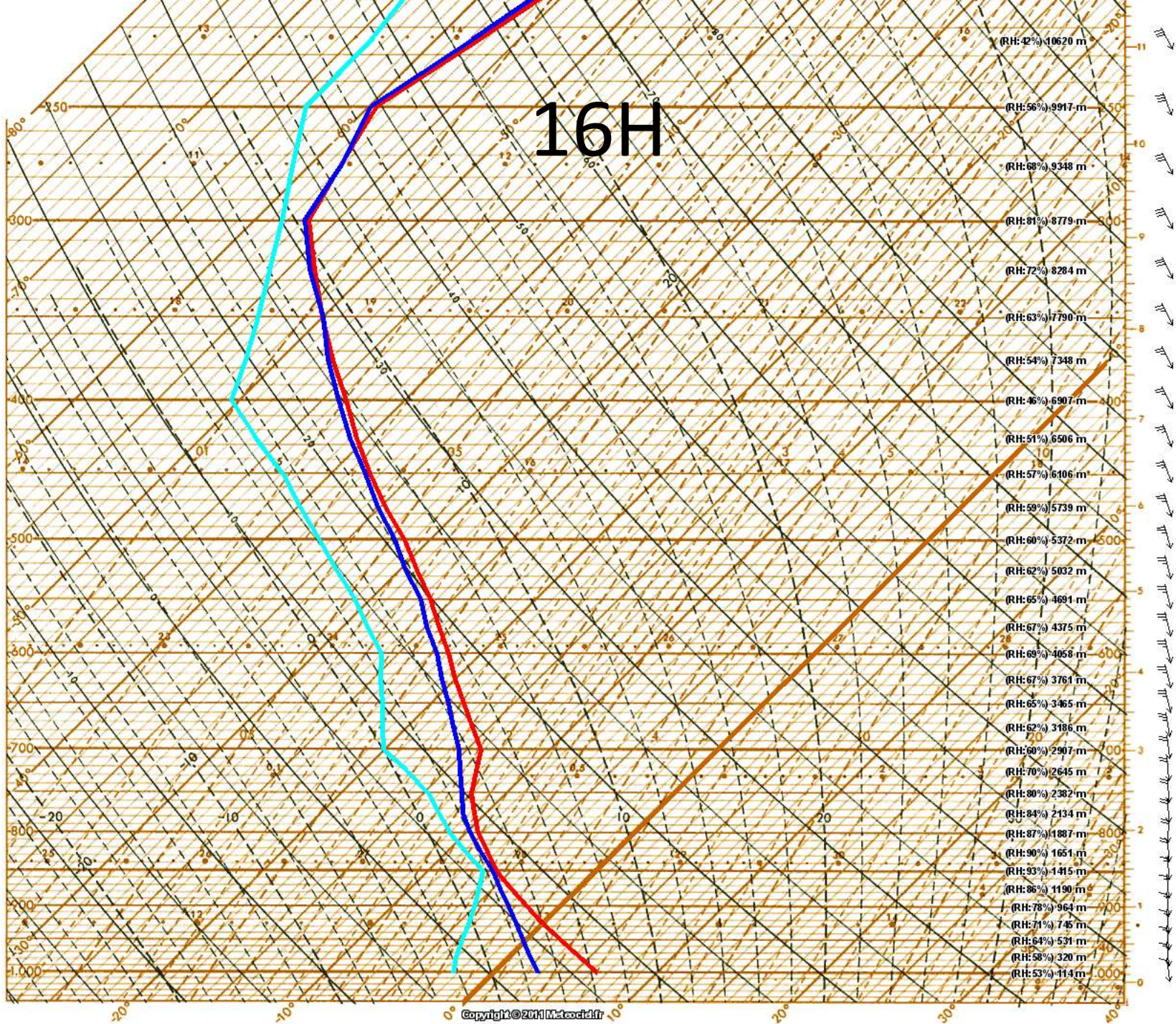
EVEB73 MSG High Resolution Visible 13/03/2013 1600 UTC



EIEB51 MSG 10.8µm IR 13/03/2013 1200 UTC



16H

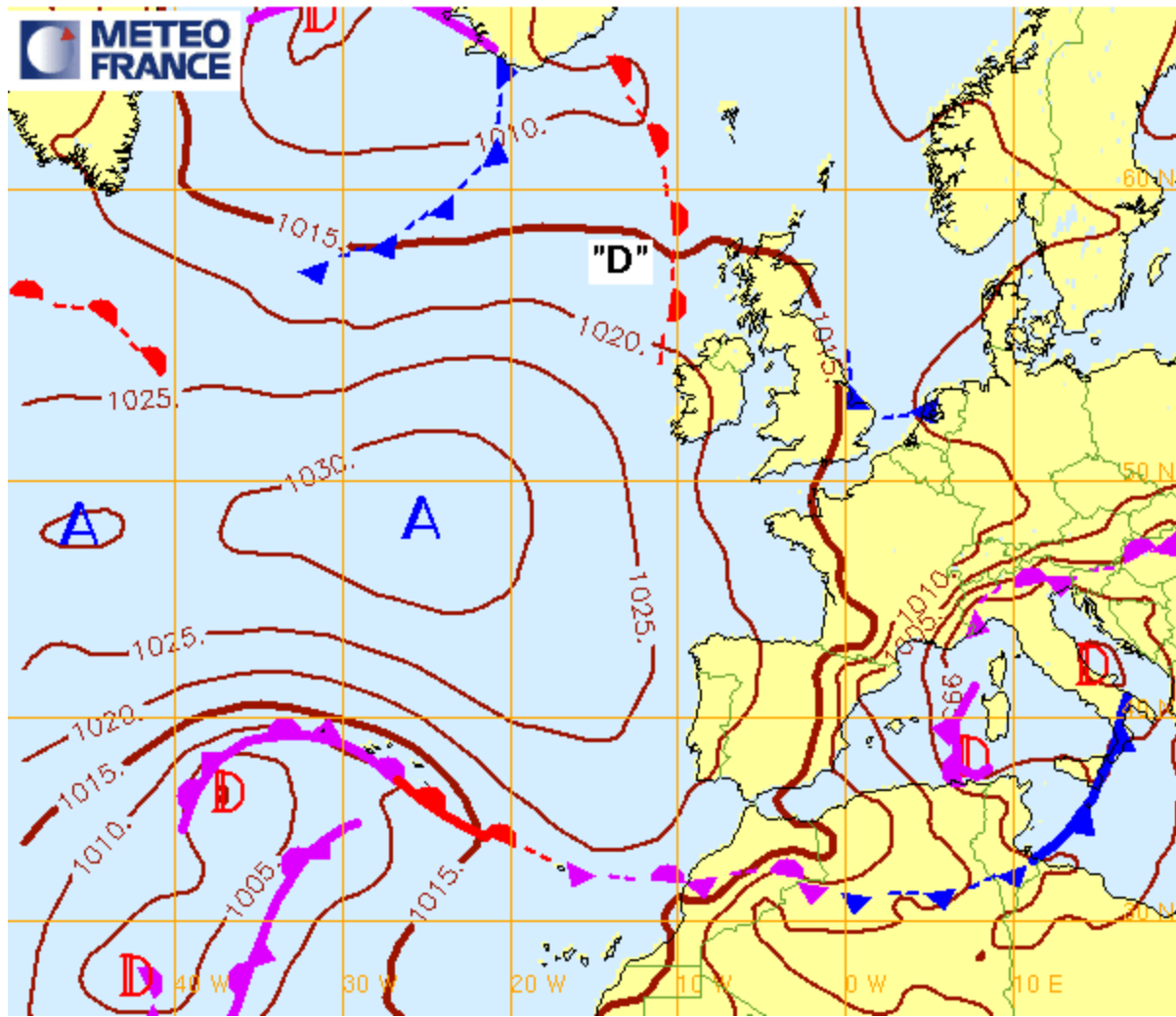


BRIEF

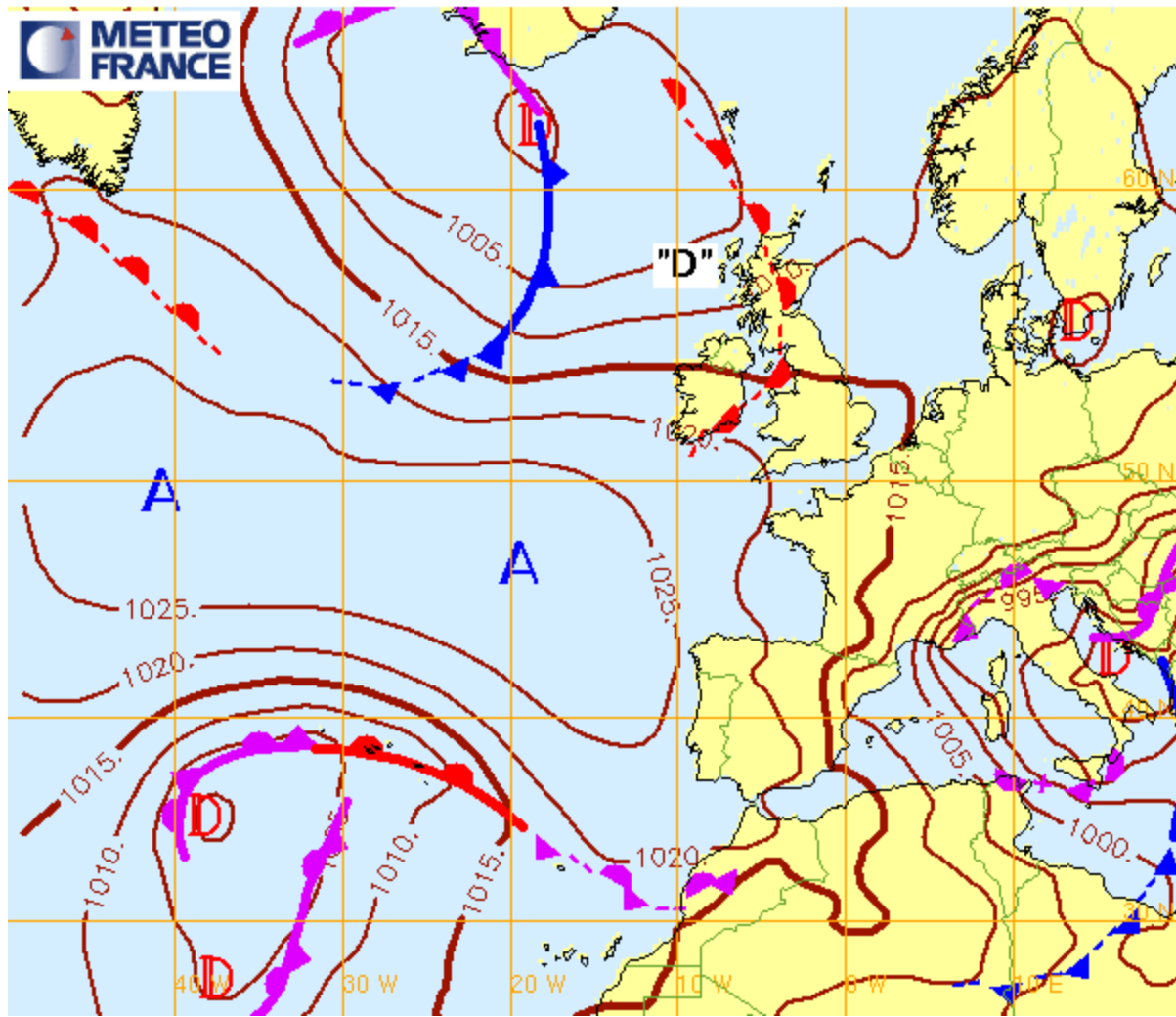
JEUDI 14 MARS 2013



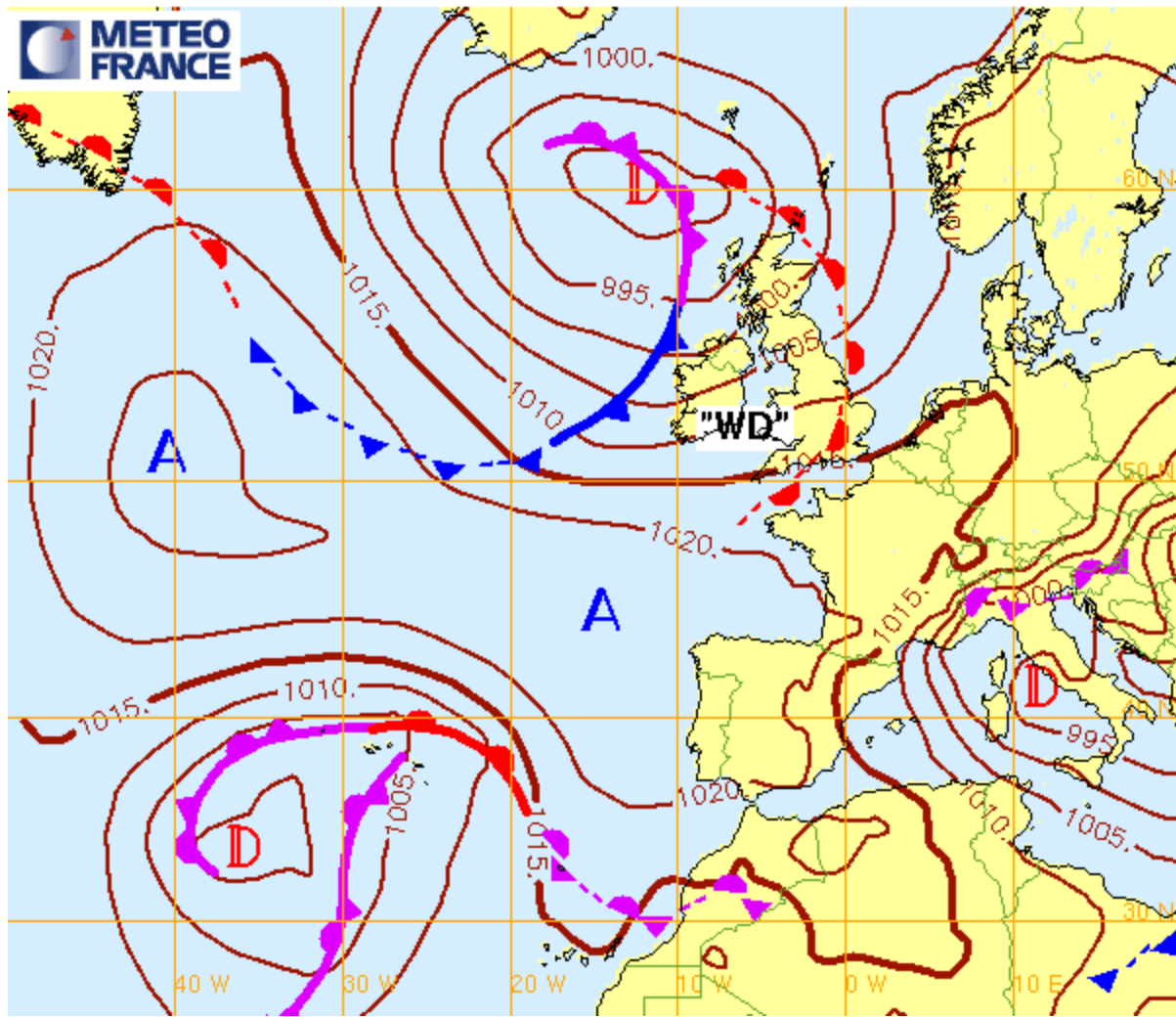
Analyse Fronts et isobares du 14/03/2013 00hUTC (reseau: 14/03/2013 00hUTC)



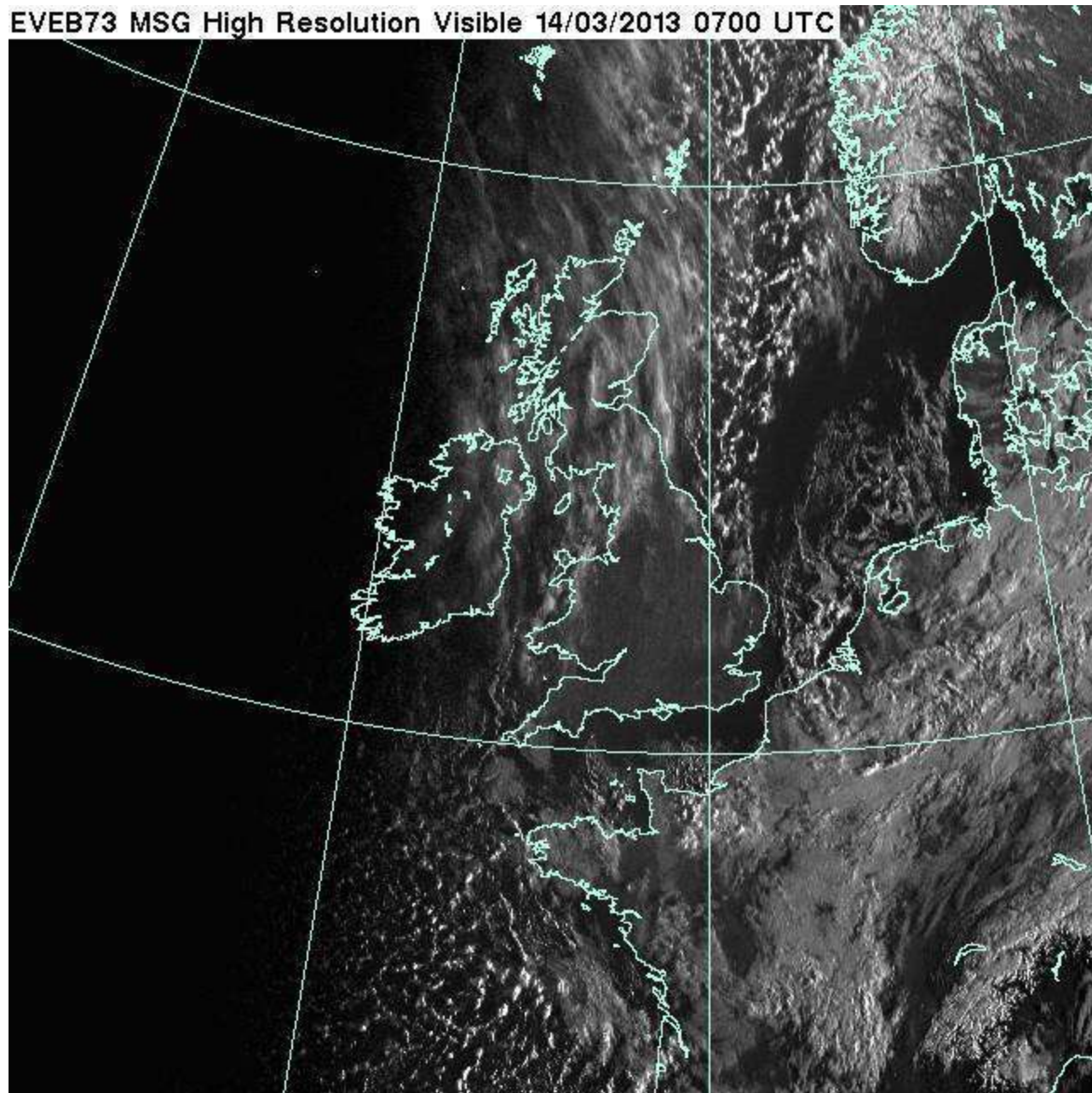
Fronts et isobares pour le 14/03/2013 12hUTC (reseau: 14/03/2013 00hUTC)



Fronts et isobares pour le 15/03/2013 00hUTC (reseau: 14/03/2013 00hUTC)



EVEB73 MSG High Resolution Visible 14/03/2013 0700 UTC



Scénario(s) prévu(s) pour JEUDI 14 MARS

Ciel: belles éclaircies

Vent: Nord, 6-12nds

Mer: belle

Températures : mini 3°/maxi 8°

Température de l'eau : 10°

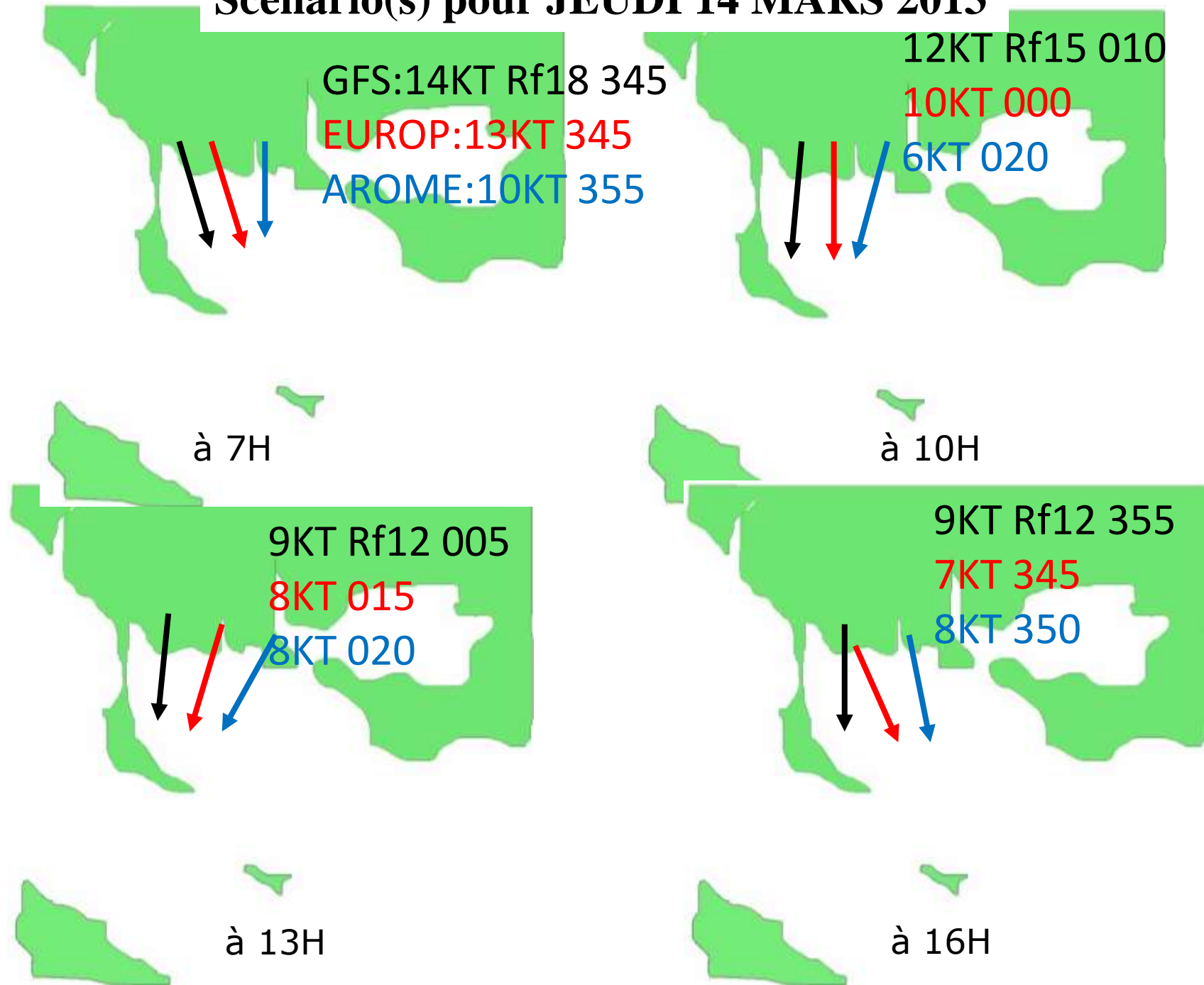
T°ressentie l'aprem: 4°

Courant: PM 6H00- **BM 12H32** - PM 18H13 **COEF 99/95**

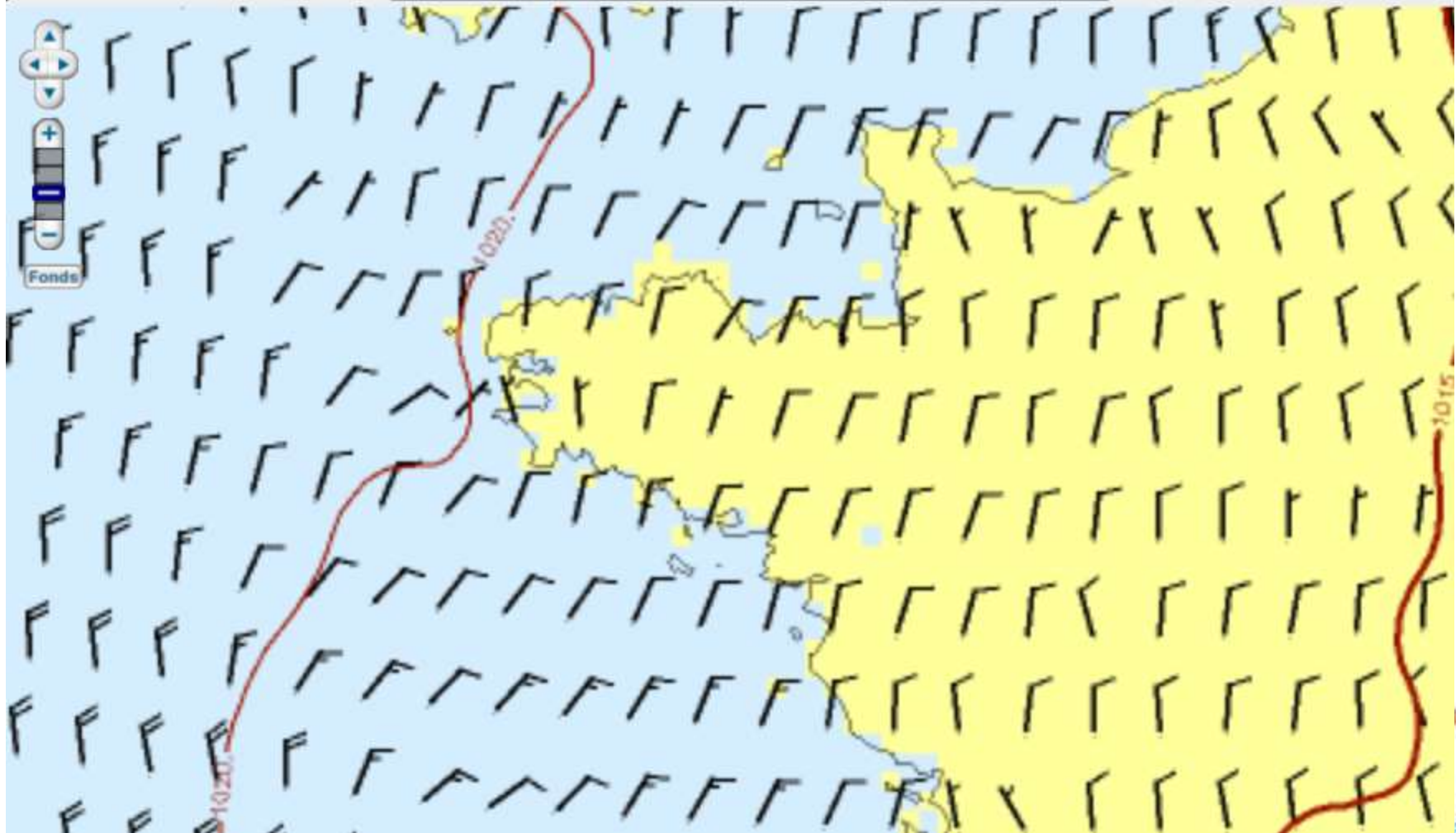
Soleil : Lever 7H27 - Coucher 19H15

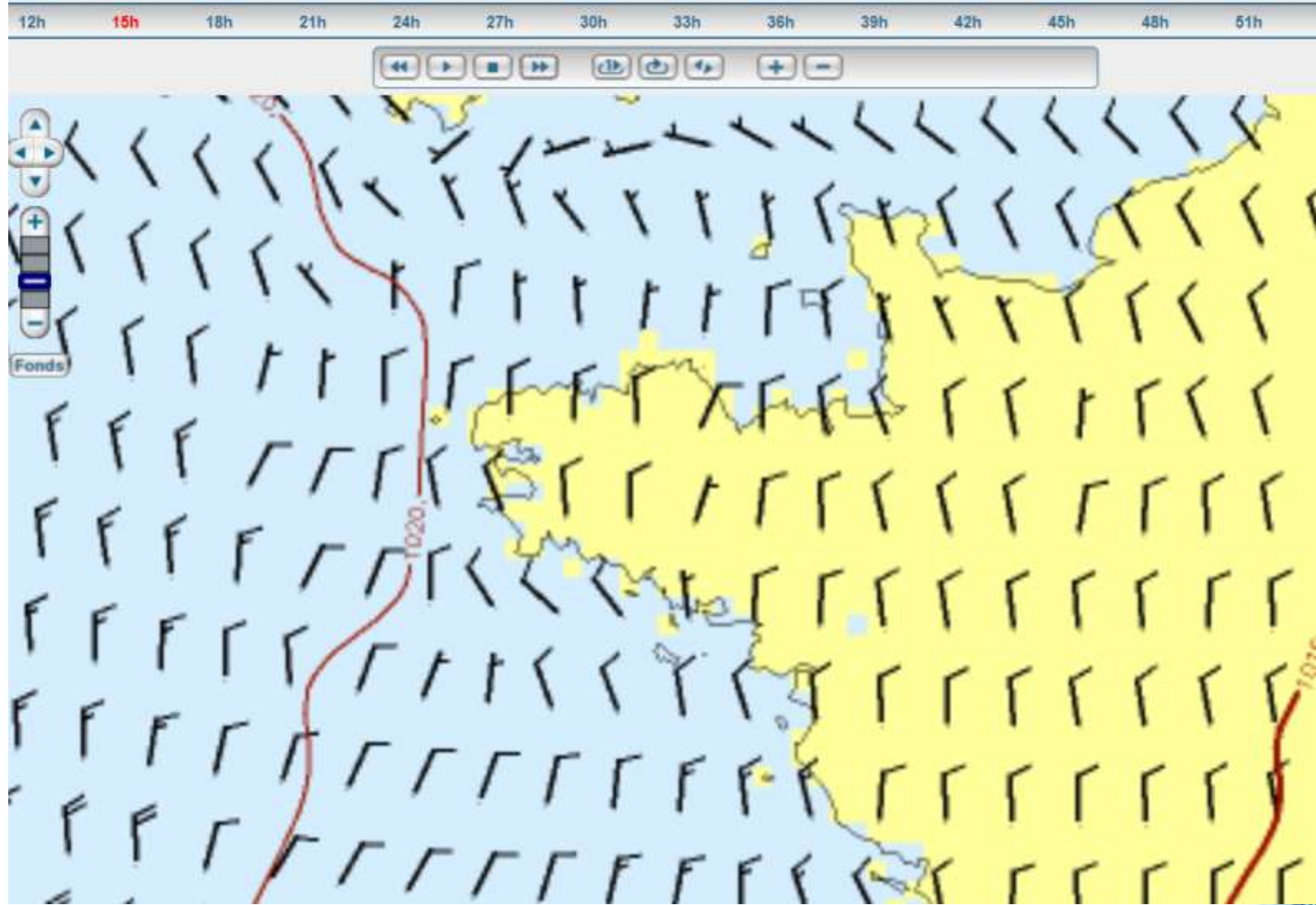


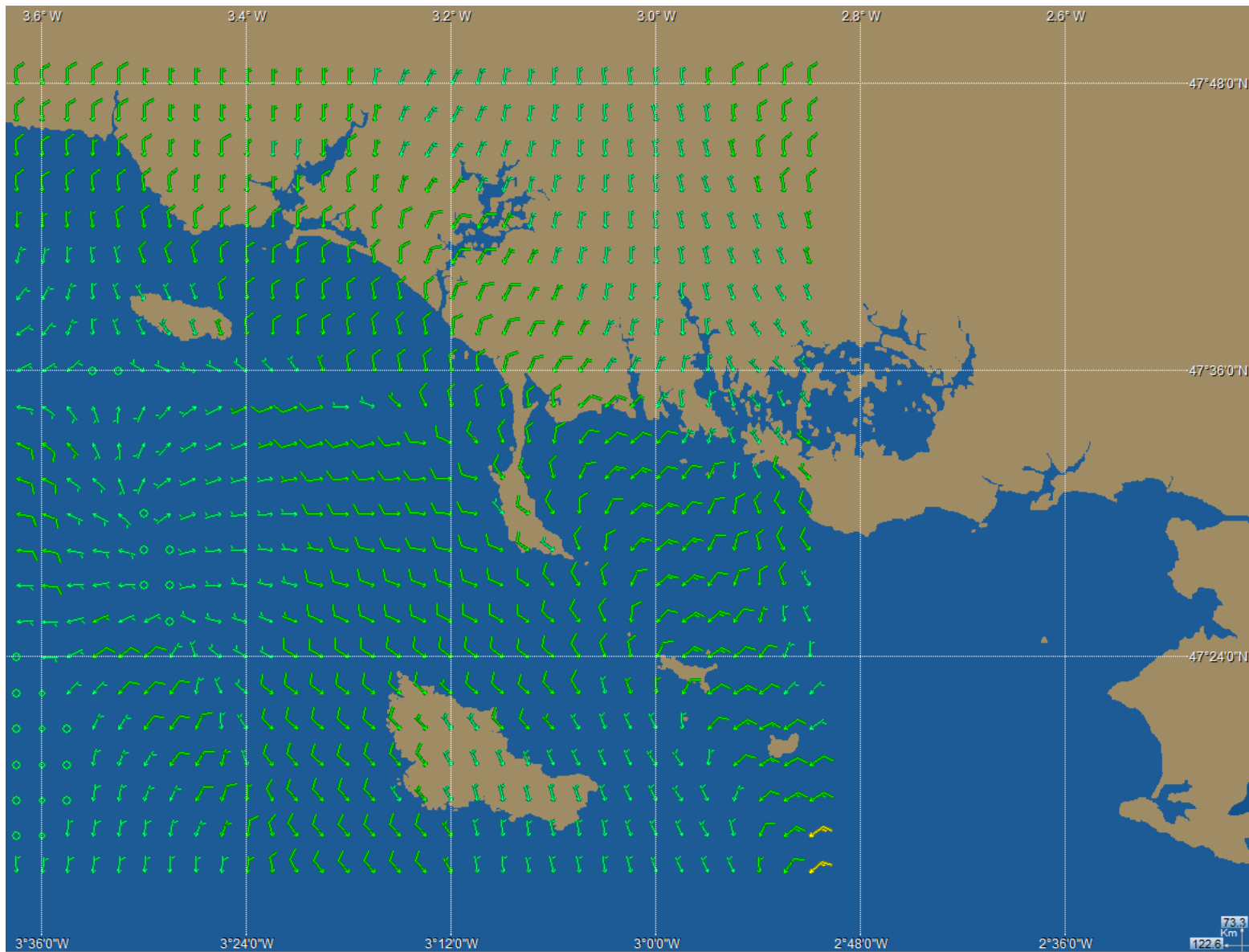
Scénario(s) pour JEUDI 14 MARS 2013



12h 15h 18h 21h 24h 27h 30h 33h 36h 39h 42h 45h 48h 51h 54h 60







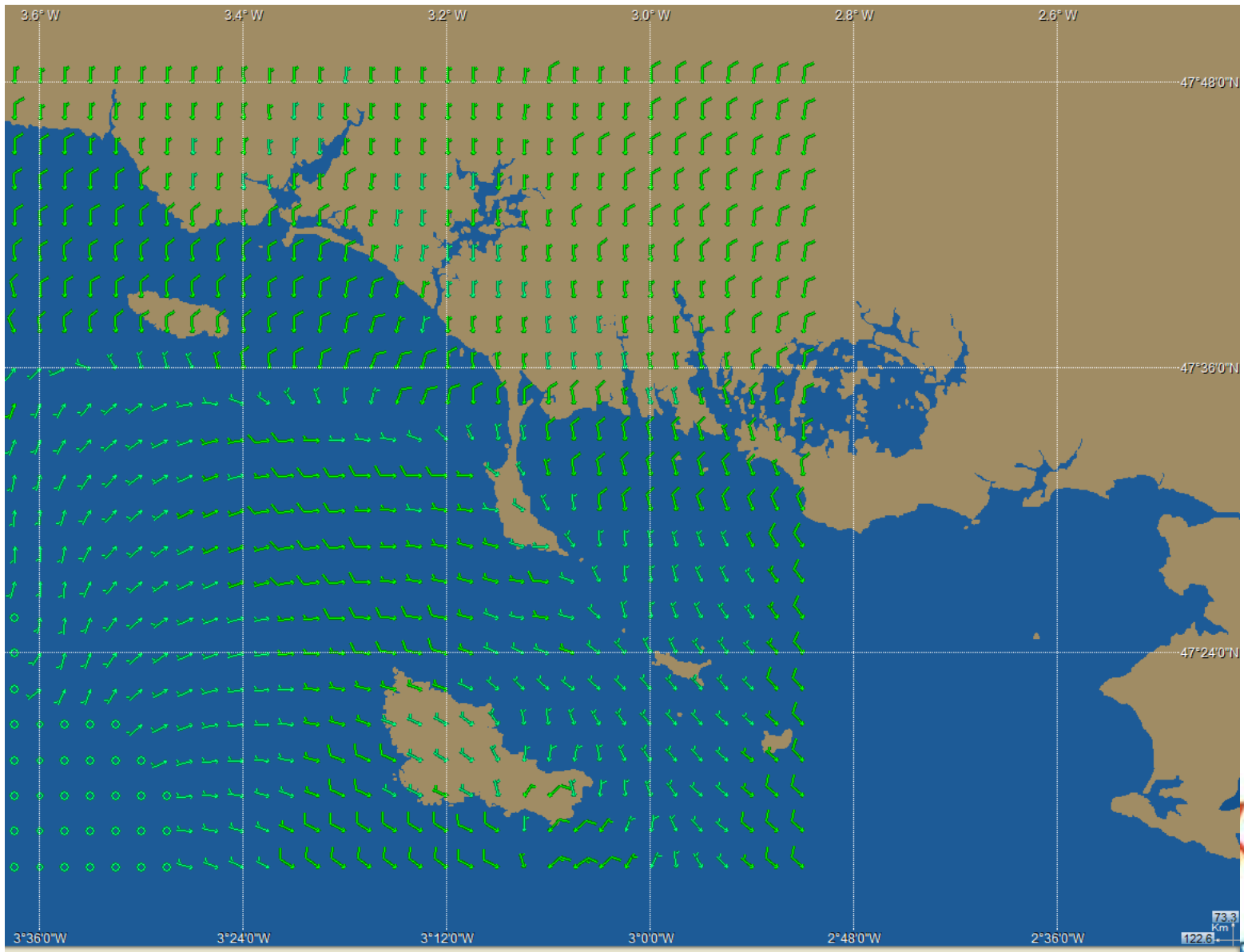
Jeu 14 Mars 2013 - 14h UTC / 15h Loc (+14h)

/ Vent moyen à 10 mètres, direction (degrés) et force (noeuds)

Modèle: Arome

Nationale





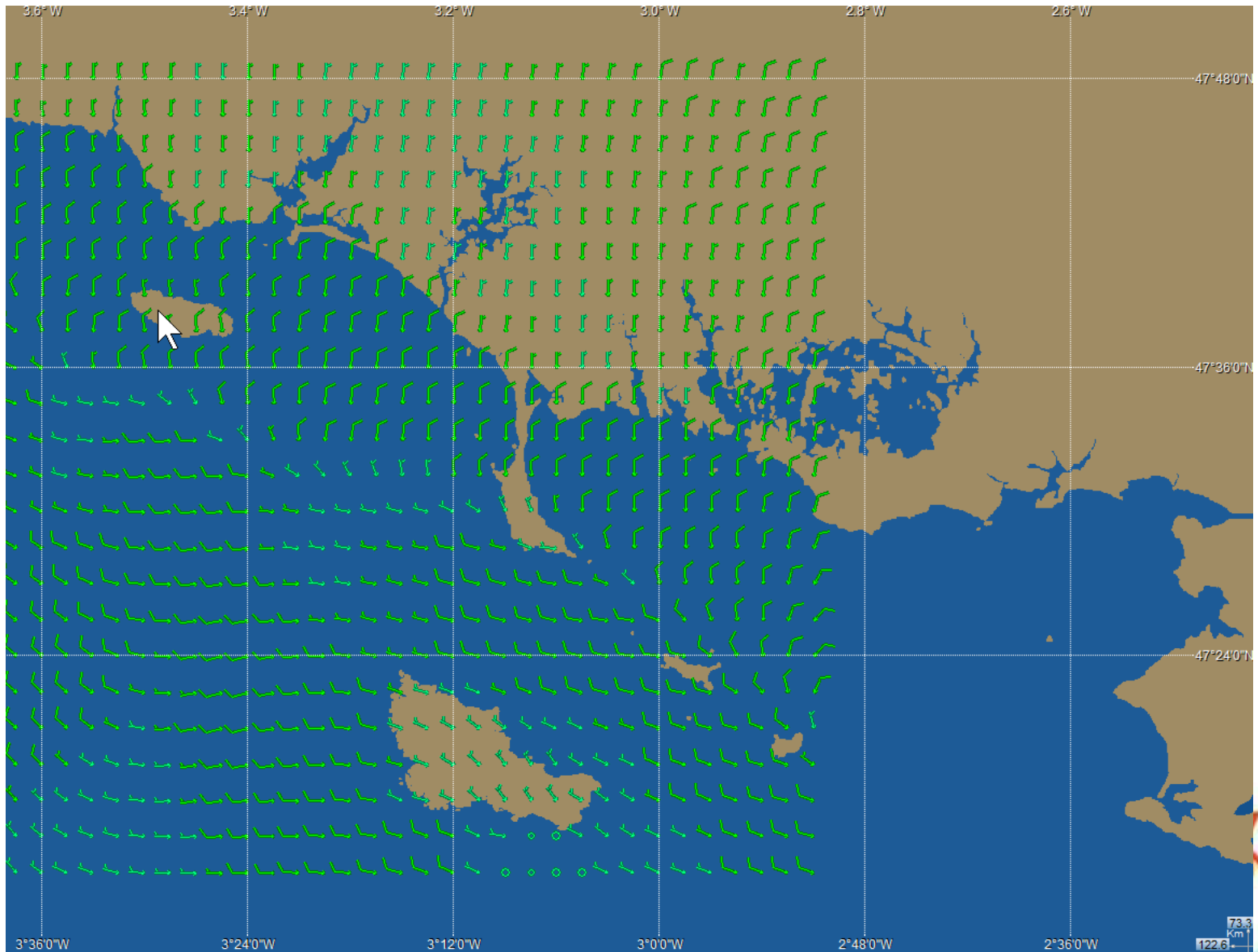
Jeu 14 Mars 2013 - 15h UTC / 16h Loc (+15h)

/ Vent moyen à 10 mètres, direction (degrés) et force (noeuds)

Modèle: Arome

Nationale





Jeu 14 Mars 2013 - 16h UTC / 17h Loc (+16h)

/ Vent moyen à 10 mètres, direction (degrés) et force (noeuds)

73.3
Km/h
122.6

Modèle: Arome

