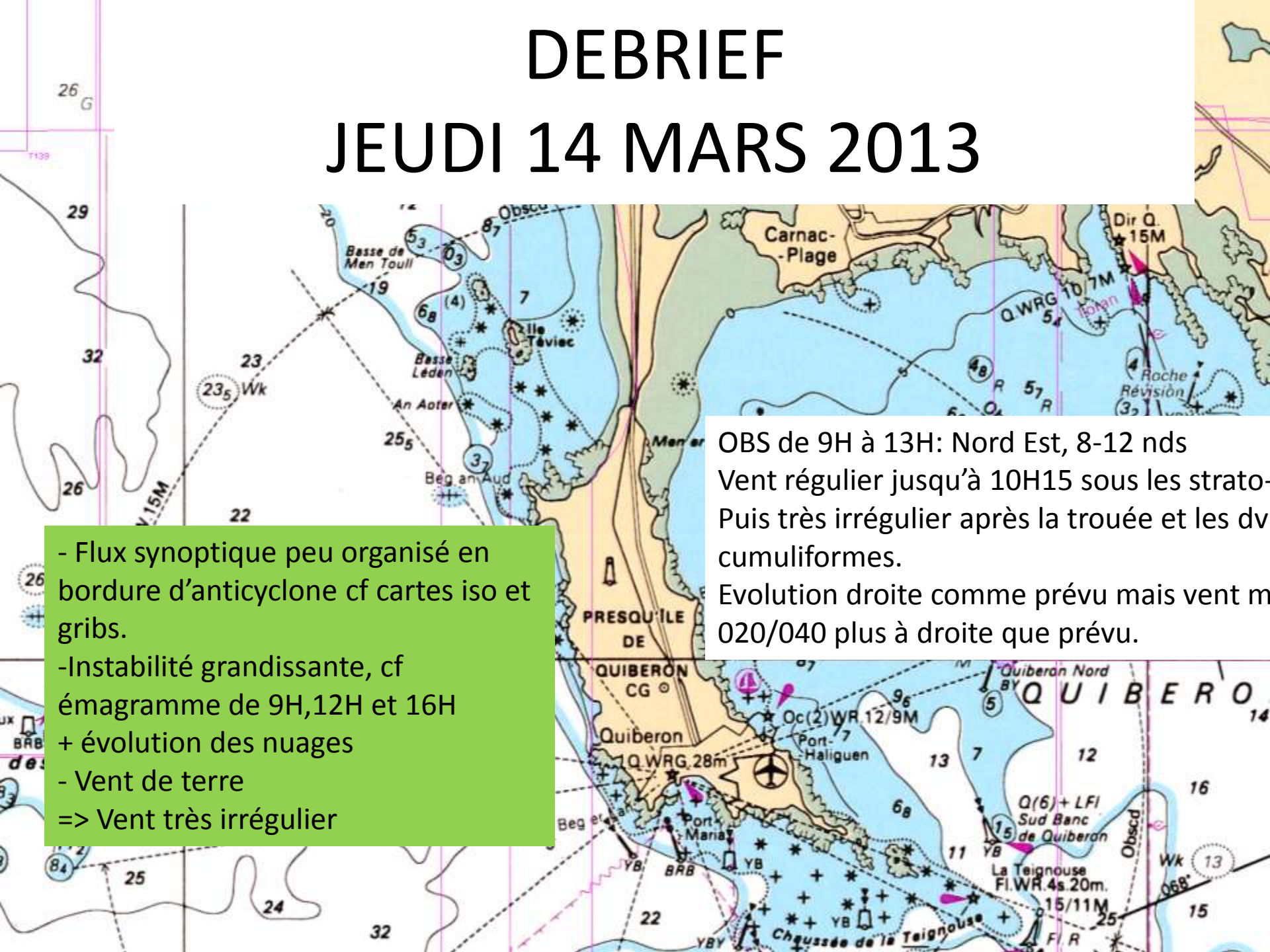


# DEBRIEF

## JEUDI 14 MARS 2013

- Flux synoptique peu organisé en bordure d'anticyclone cf cartes iso et grib.
- Instabilité grandissante, cf émagramme de 9H, 12H et 16H + évolution des nuages
- Vent de terre
- => Vent très irrégulier

OBS de 9H à 13H: Nord Est, 8-12 nds  
Vent régulier jusqu'à 10H15 sous les strato-  
Puis très irrégulier après la trouée et les dv  
cumuliformes.  
Evolution droite comme prévu mais vent m  
020/040 plus à droite que prévu.

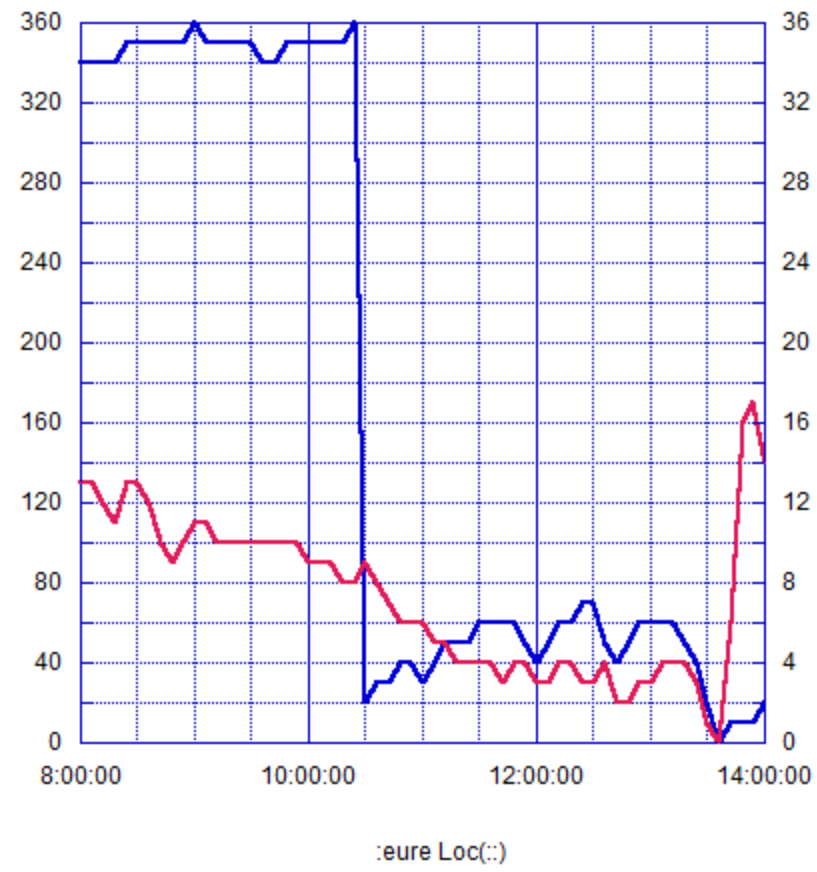




— Direction (°)

— Force du vent (noeuds)

20130314GX



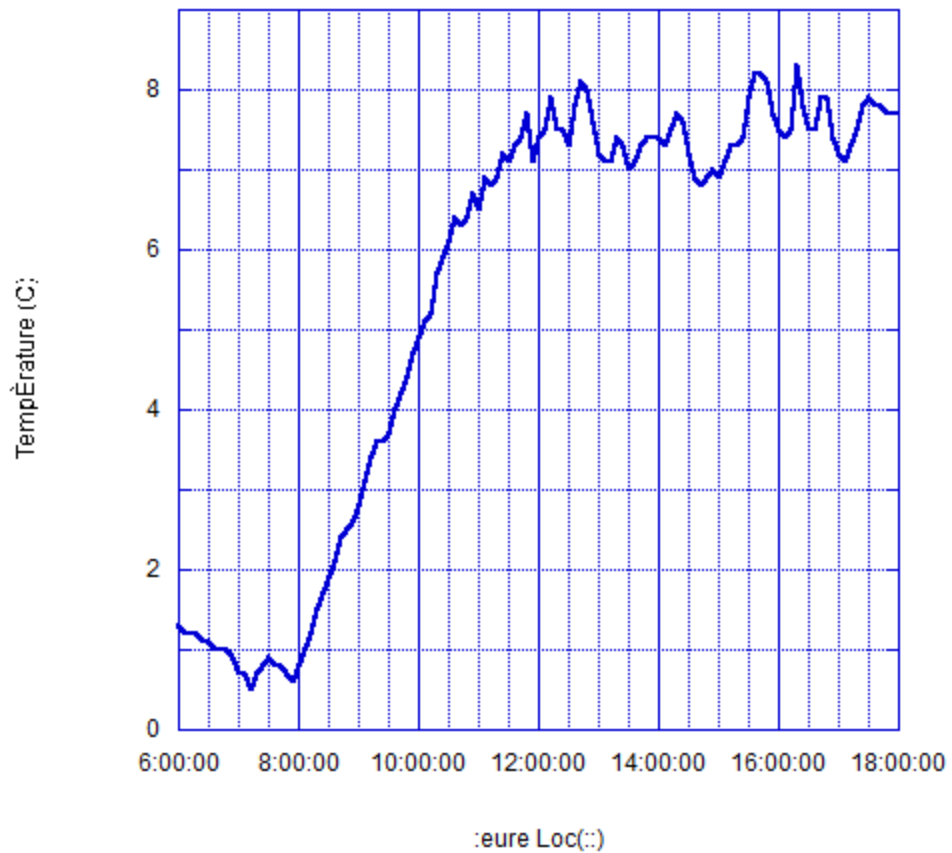
Force du vent (noeuds):





Température (C)

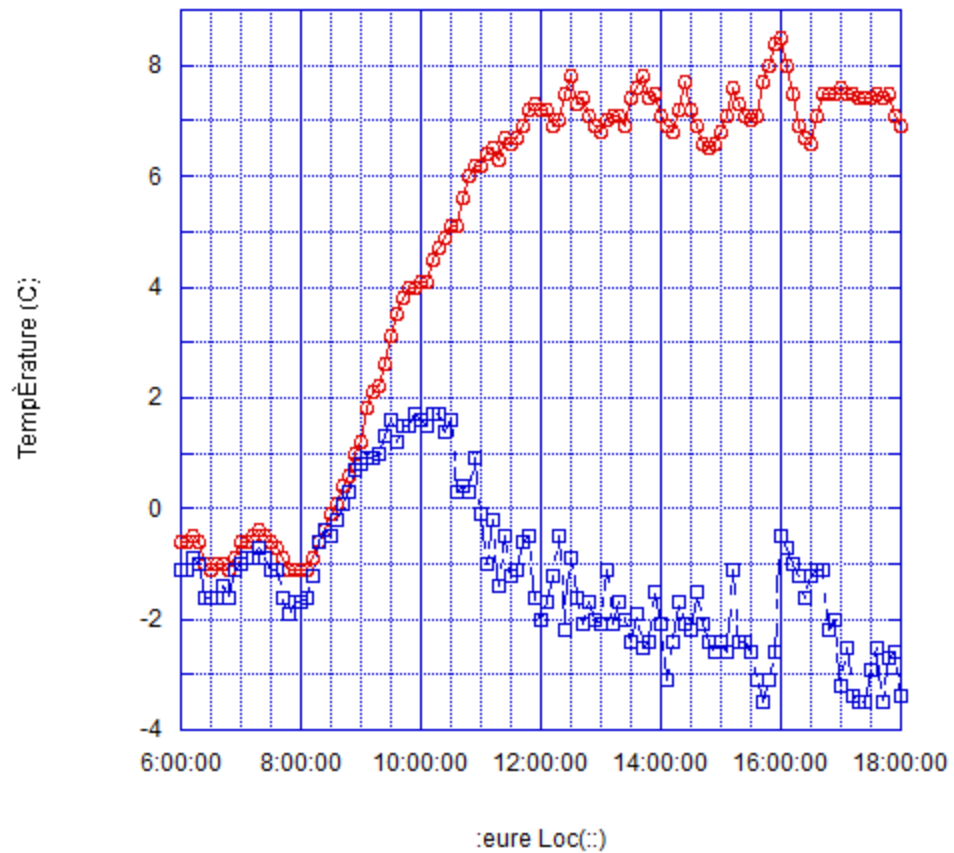
20130314AY



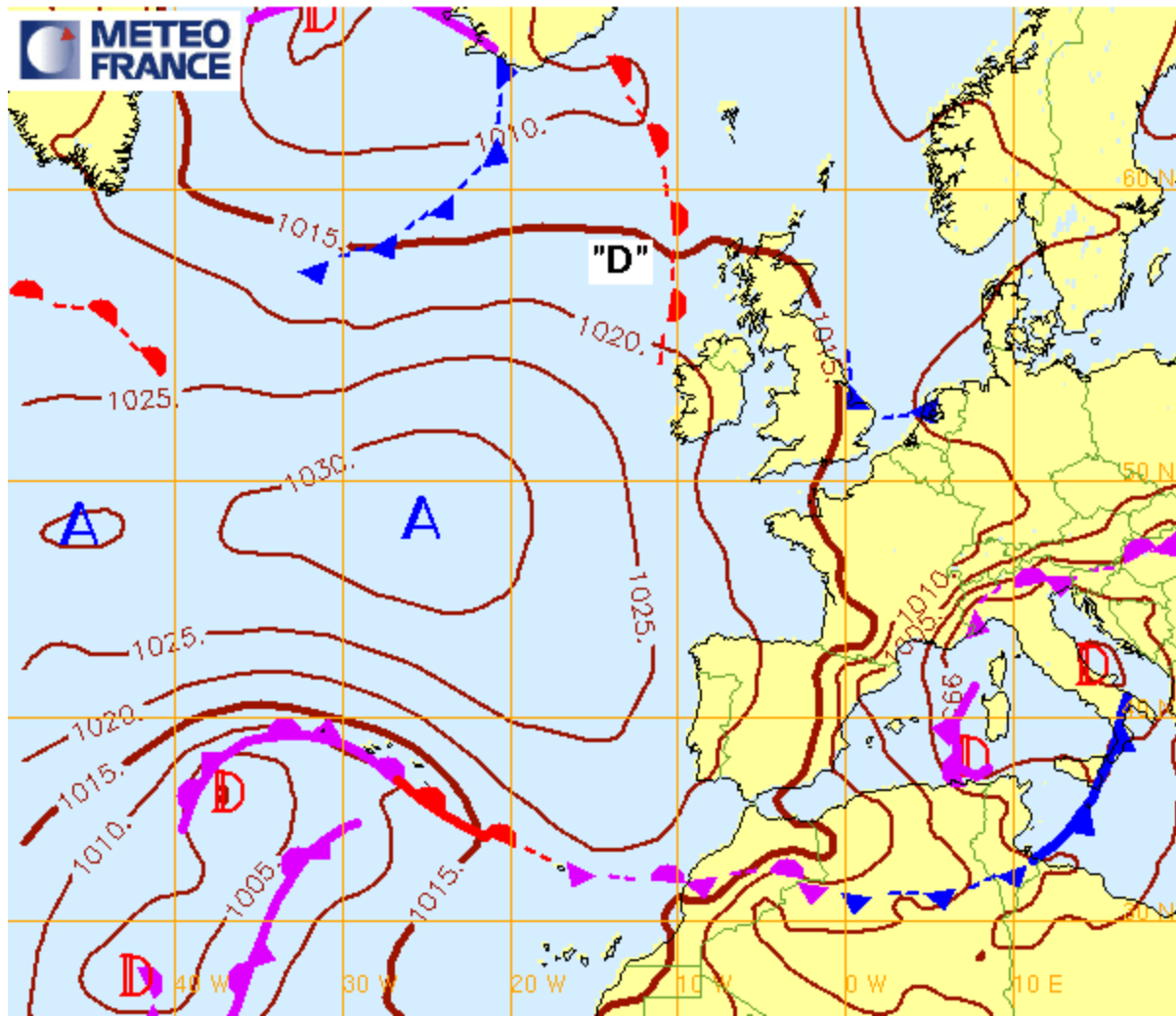
# VANNES



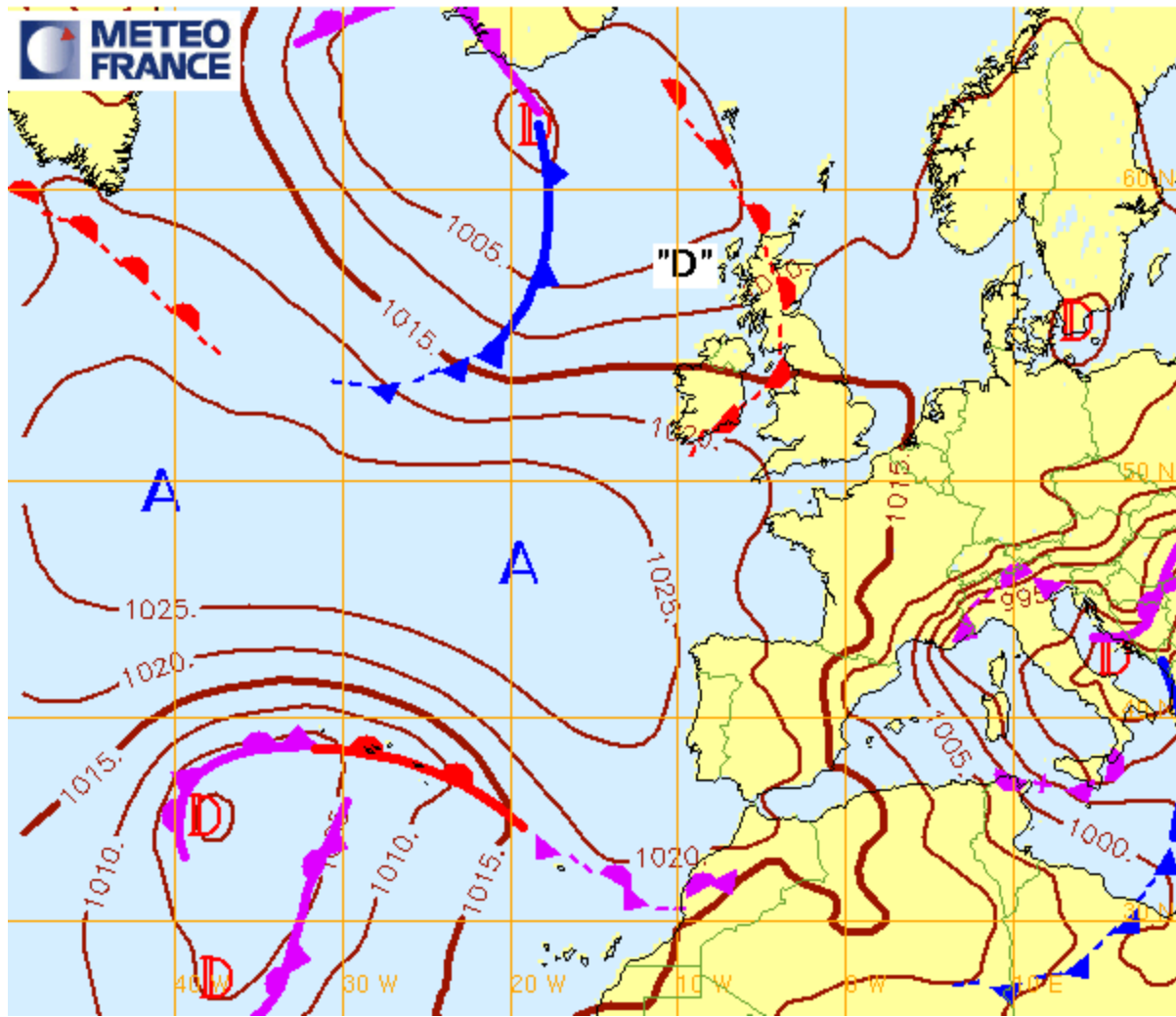
20130314VA



Analyse Fronts et isobares du 14/03/2013 00hUTC (reseau: 14/03/2013 00hUTC)



Fronts et isobares pour le 14/03/2013 12hUTC (reseau: 14/03/2013 00hUTC)





# Scénario(s) prévu(s) pour JEUDI 14 MARS

**Ciel:** belles éclaircies

**Vent:** Nord, 6-12nds

**Mer:** belle

**Températures :** mini 3°/maxi 8°

**Température de l'eau :** 10°

**T°ressentie l'aprem:** 4°

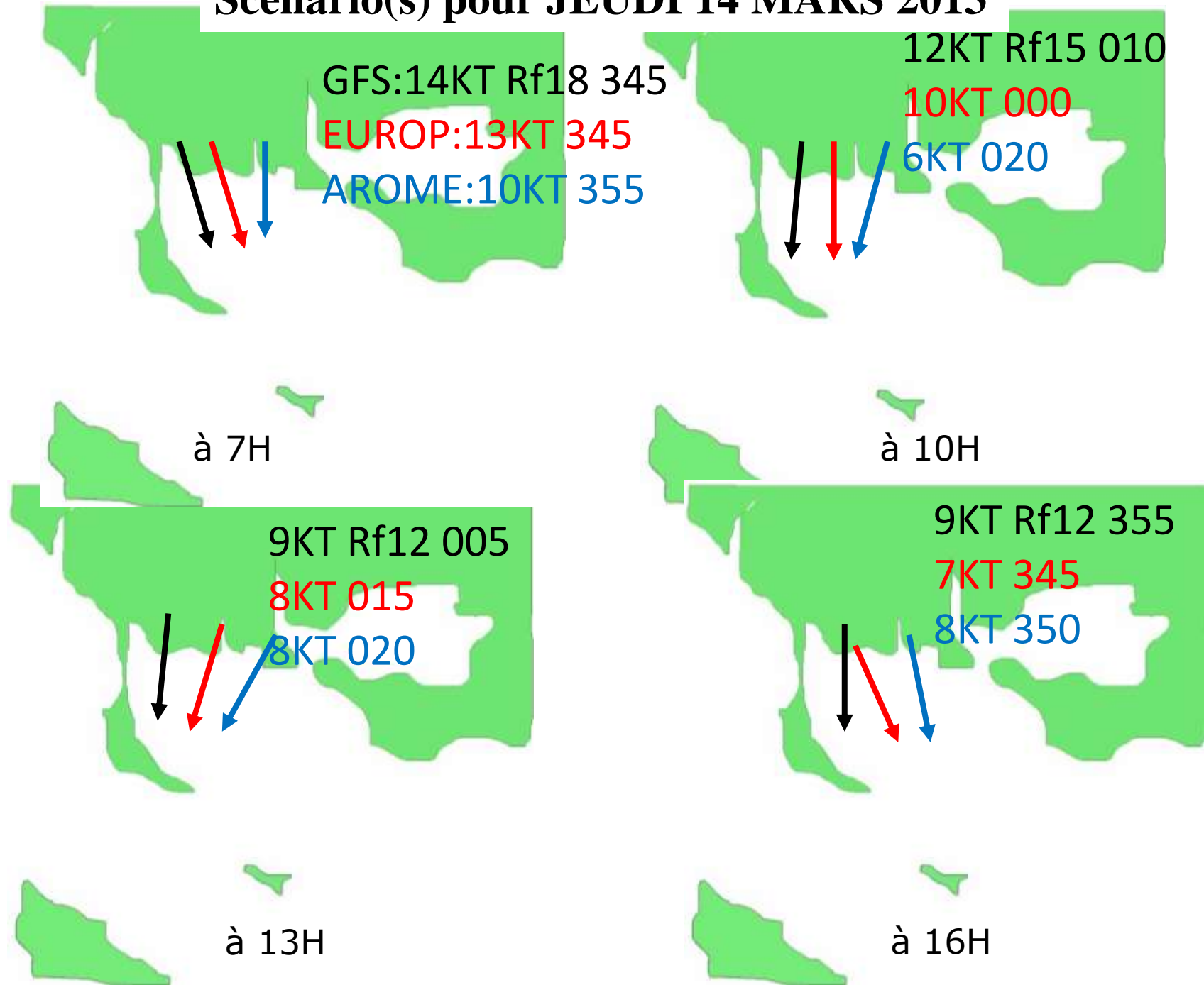
**Courant:** PM 6H00- **BM 12H32** - PM 18H13    **COEF 99/95**

**Soleil :** Lever 7H27 - Coucher 19H15



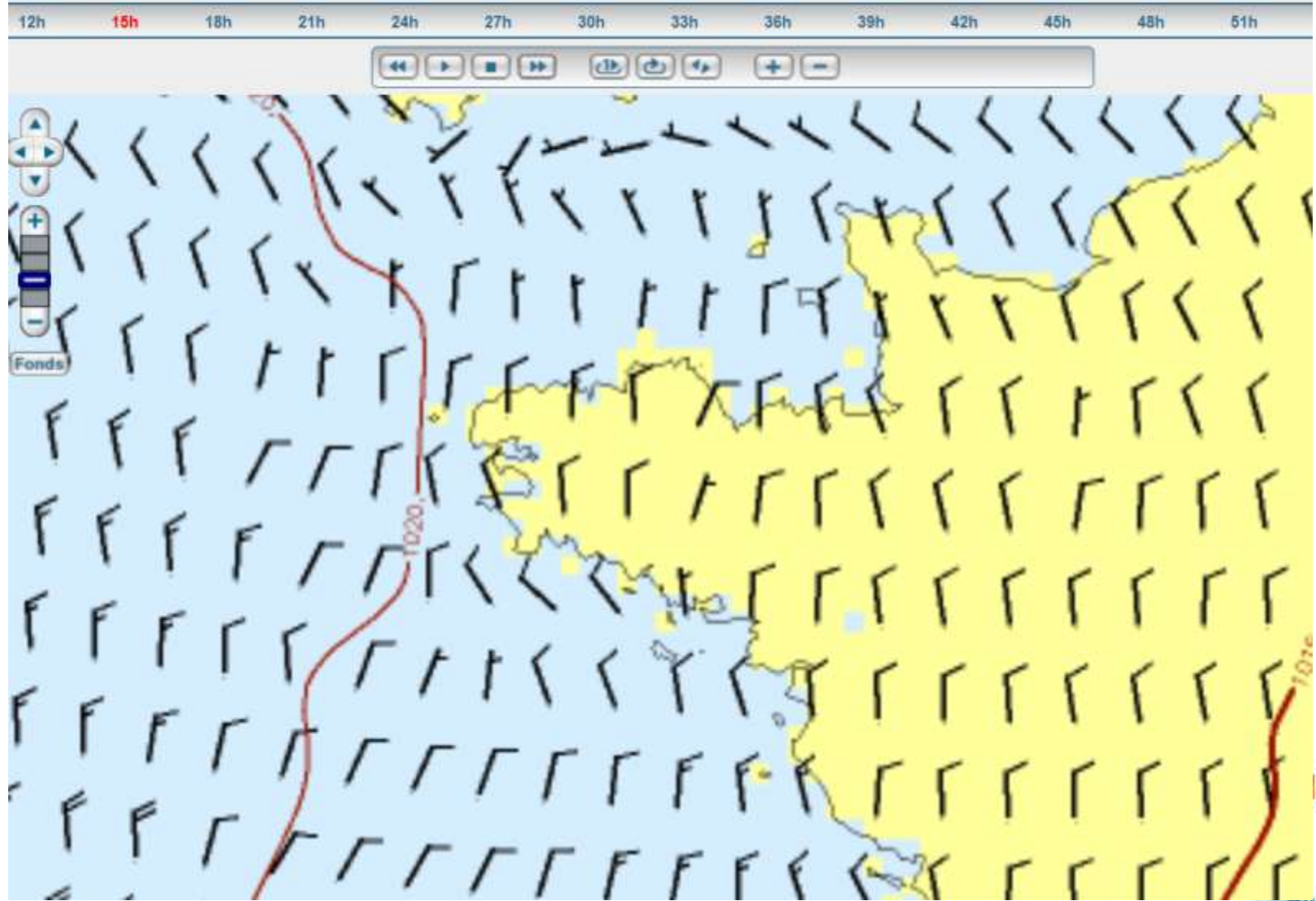


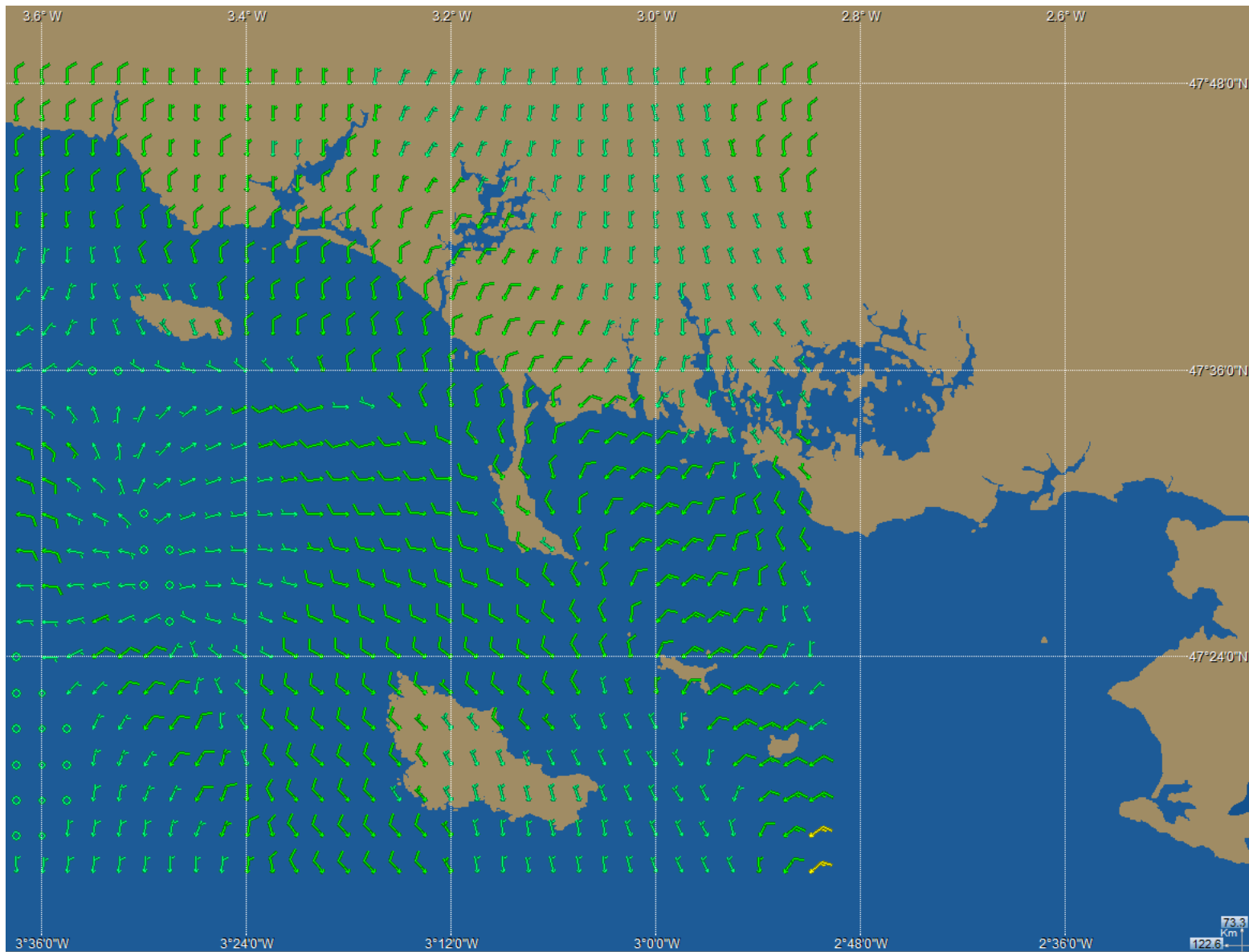
# Scénario(s) pour JEUDI 14 MARS 2013



12h 15h 18h 21h 24h 27h 30h 33h 36h 39h 42h 45h 48h 51h 54h 60







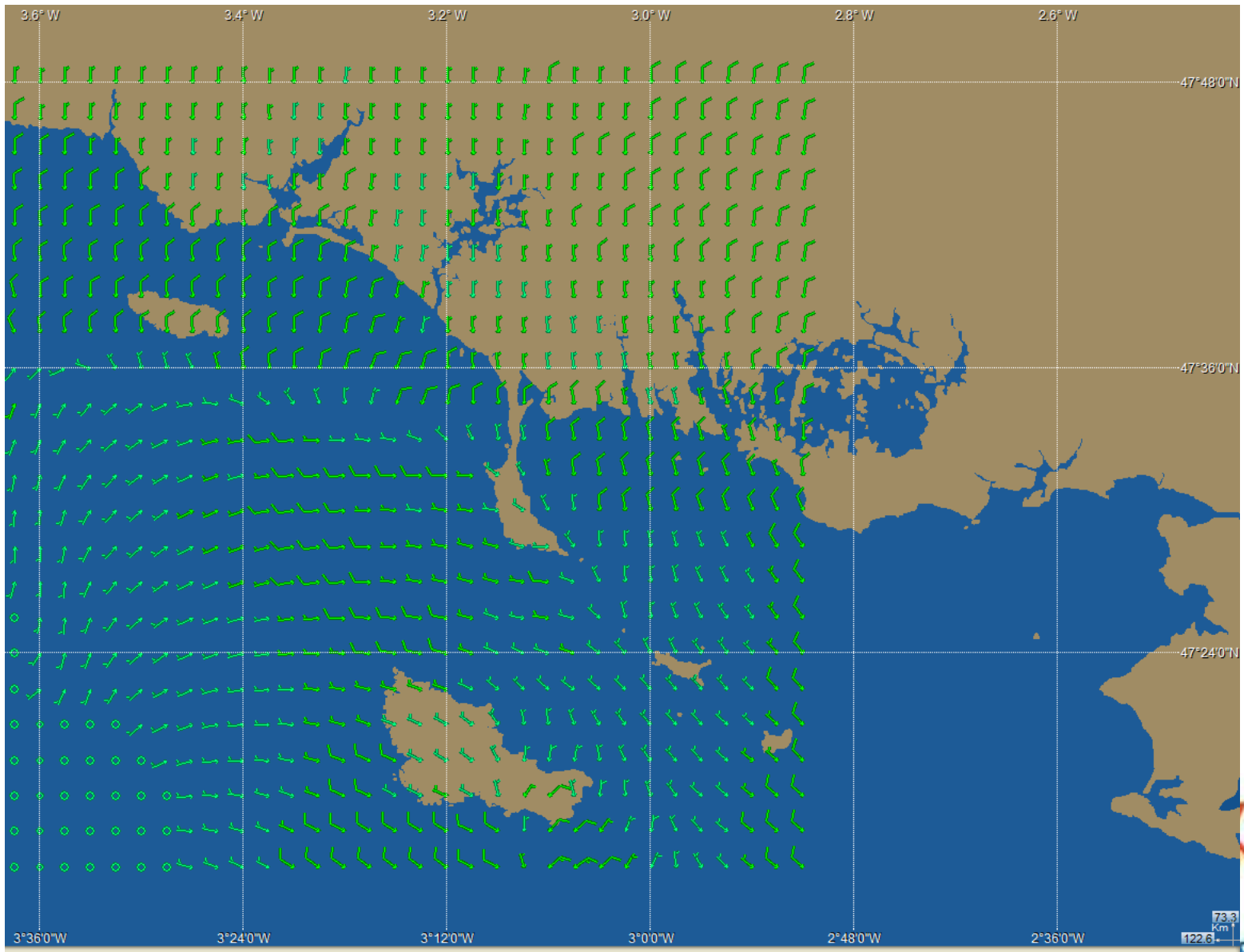
Jeu 14 Mars 2013 - 14h UTC / 15h Loc (+14h)

/ Vent moyen à 10 mètres, direction (degrés) et force (noeuds)

Modèle: Arome

Nationale

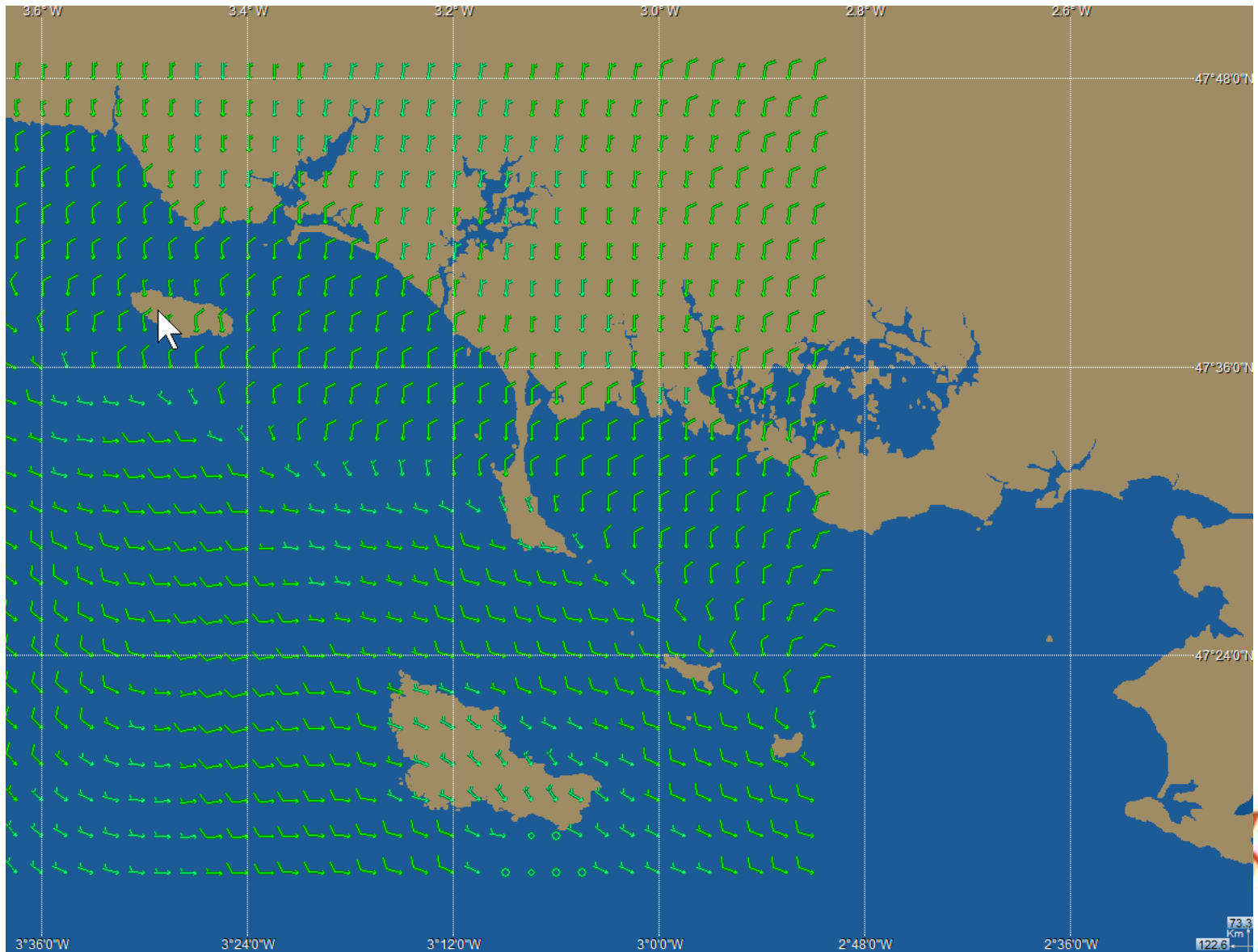




Jeu 14 Mars 2013 - 15h UTC / 16h Loc (+15h)

/ Vent moyen à 10 mètres, direction (degrés) et force (noeuds)





Jeu 14 Mars 2013 - 16h UTC / 17h Loc (+16h)

/ Vent moyen à 10 mètres, direction (degrés) et force (noeuds)

73.3  
Km/h  
122.6

Modèle: Arome

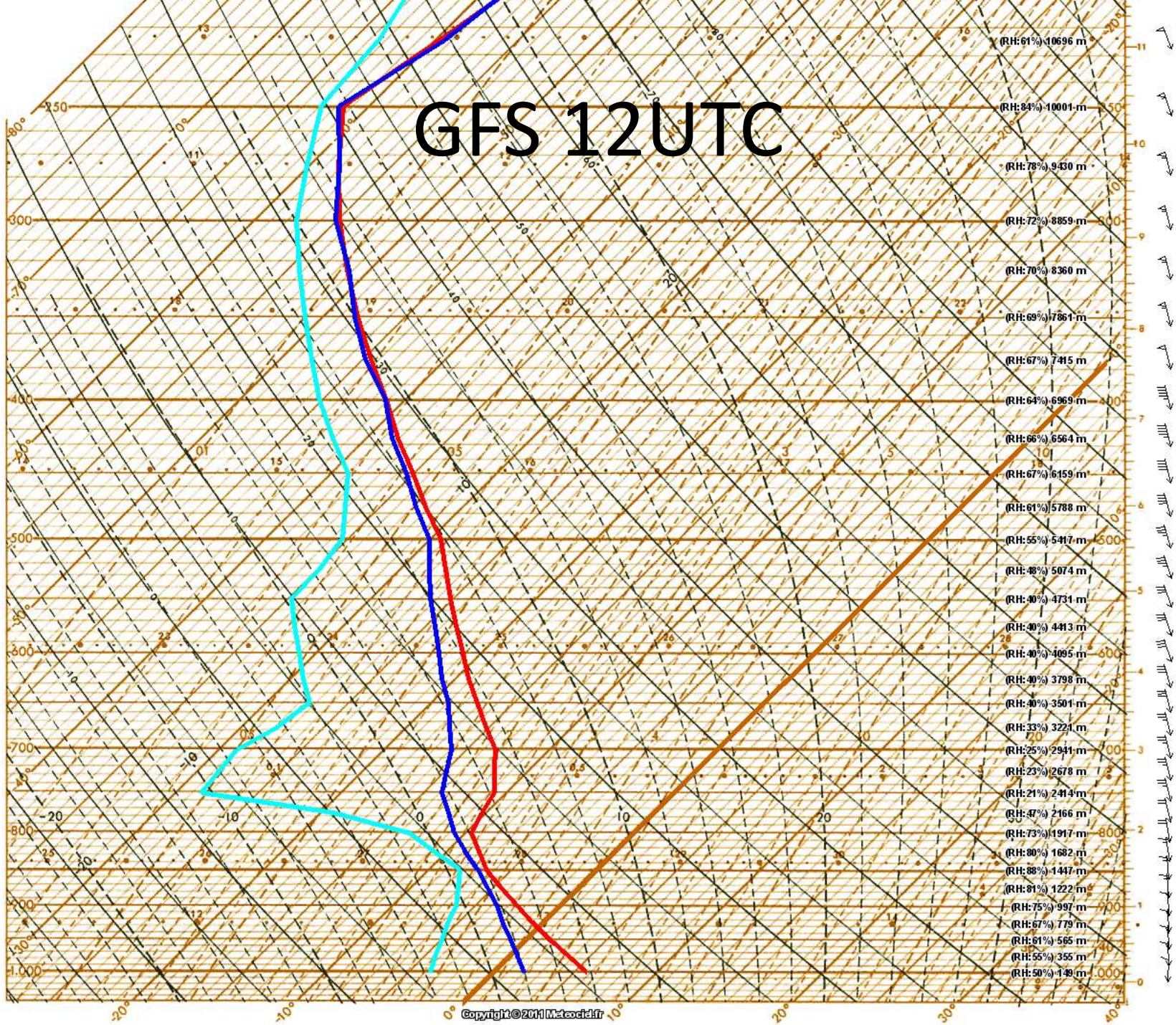




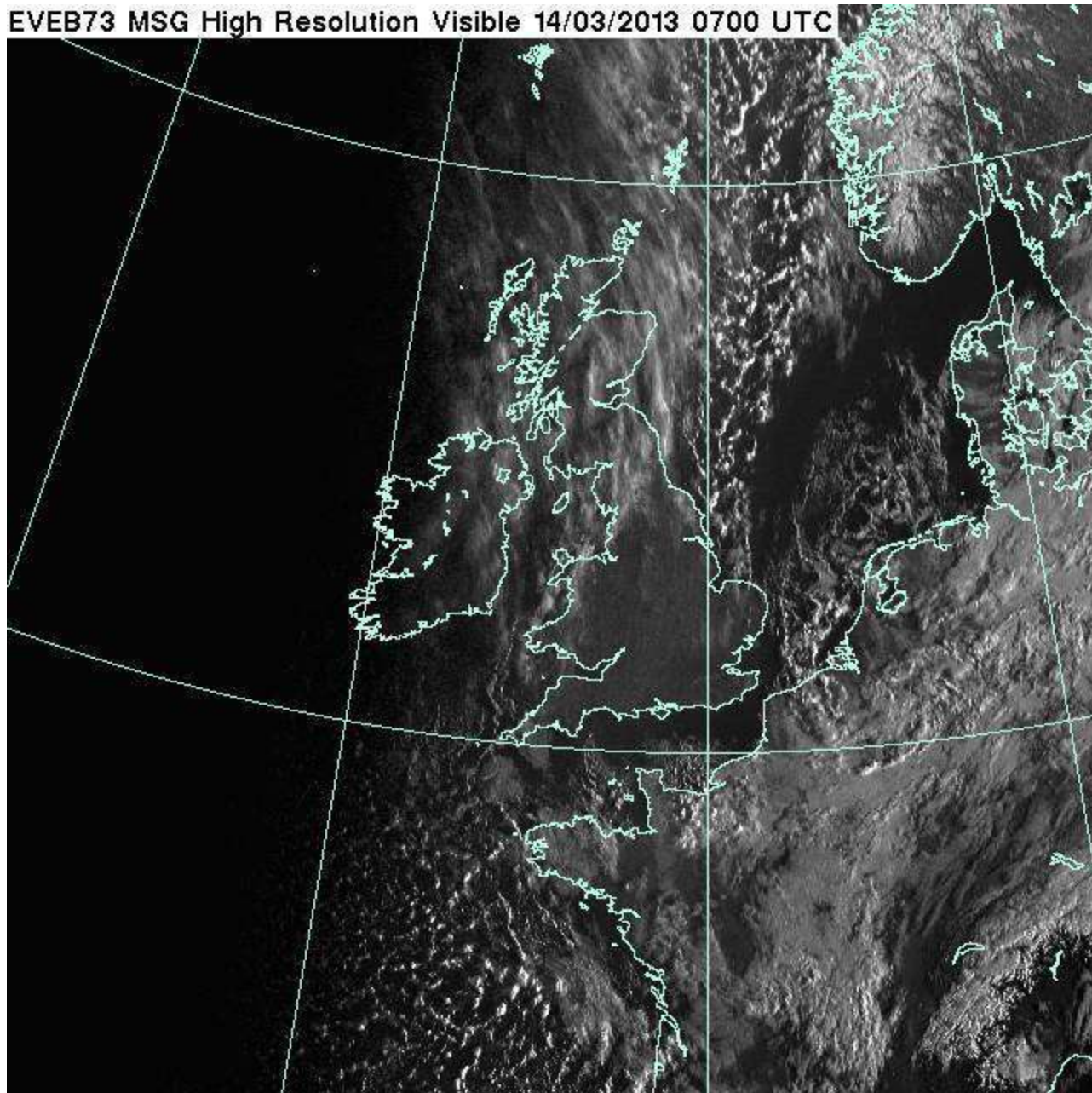




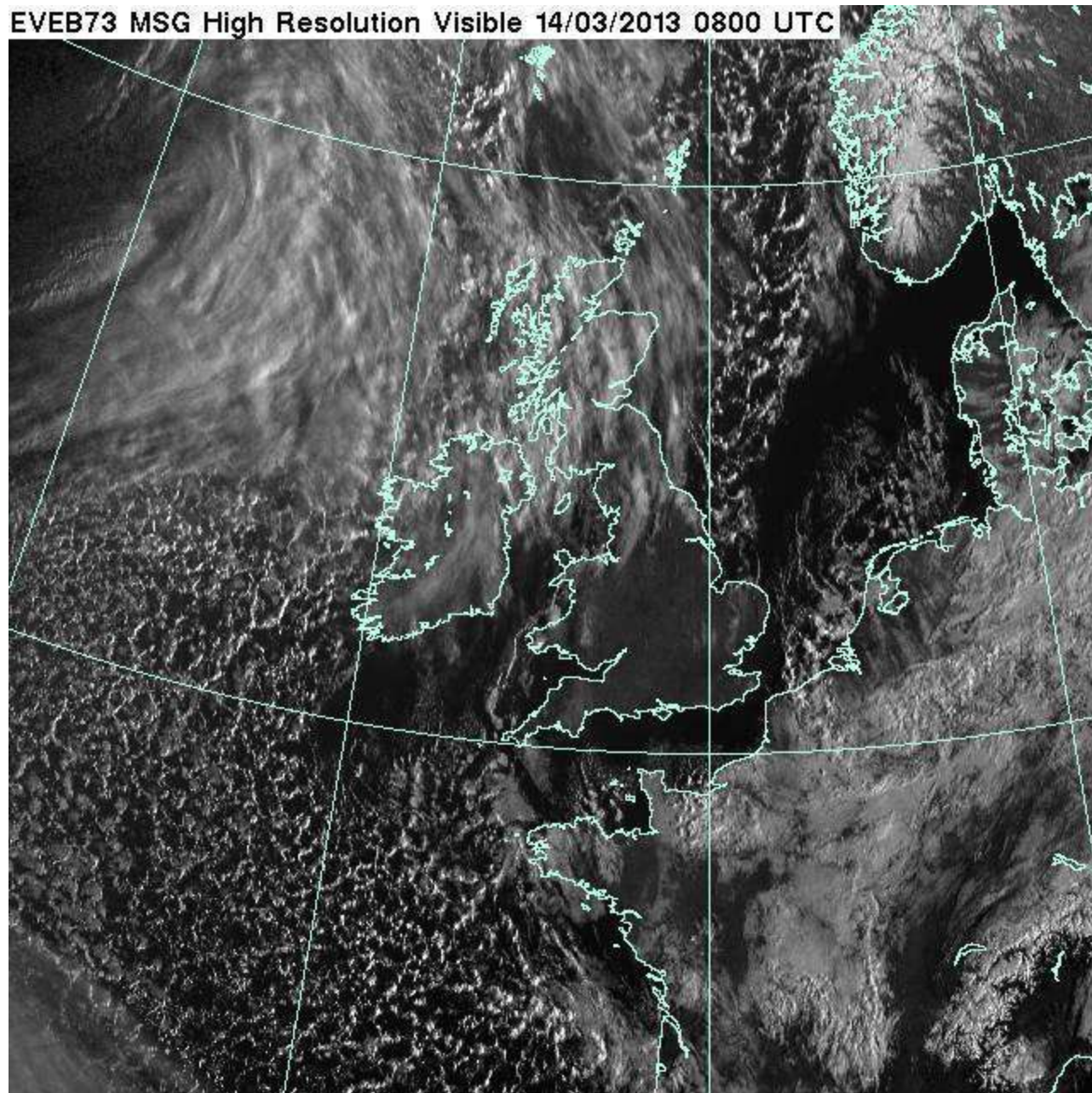
# GFS 12UTC



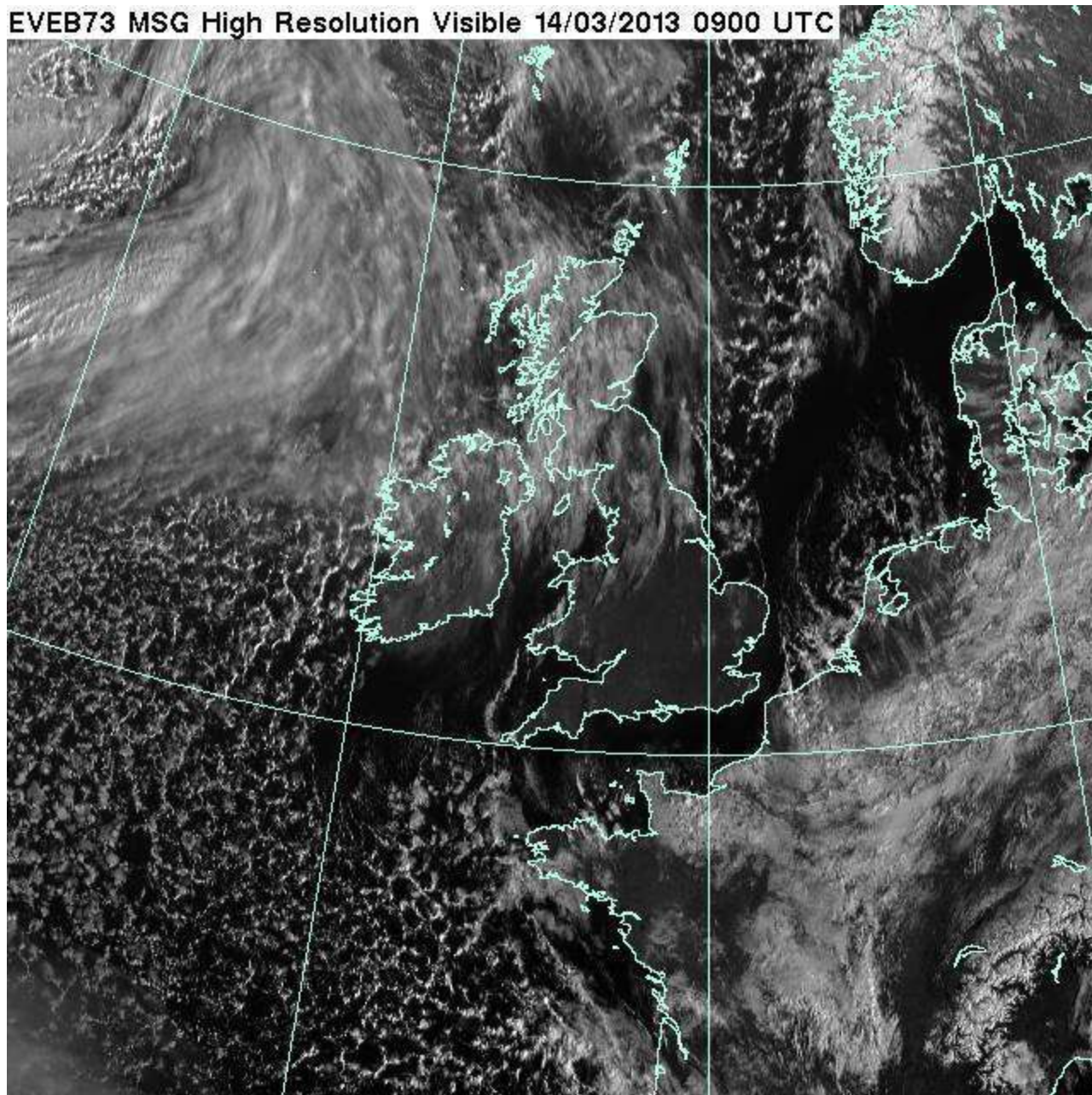
EVEB73 MSG High Resolution Visible 14/03/2013 0700 UTC



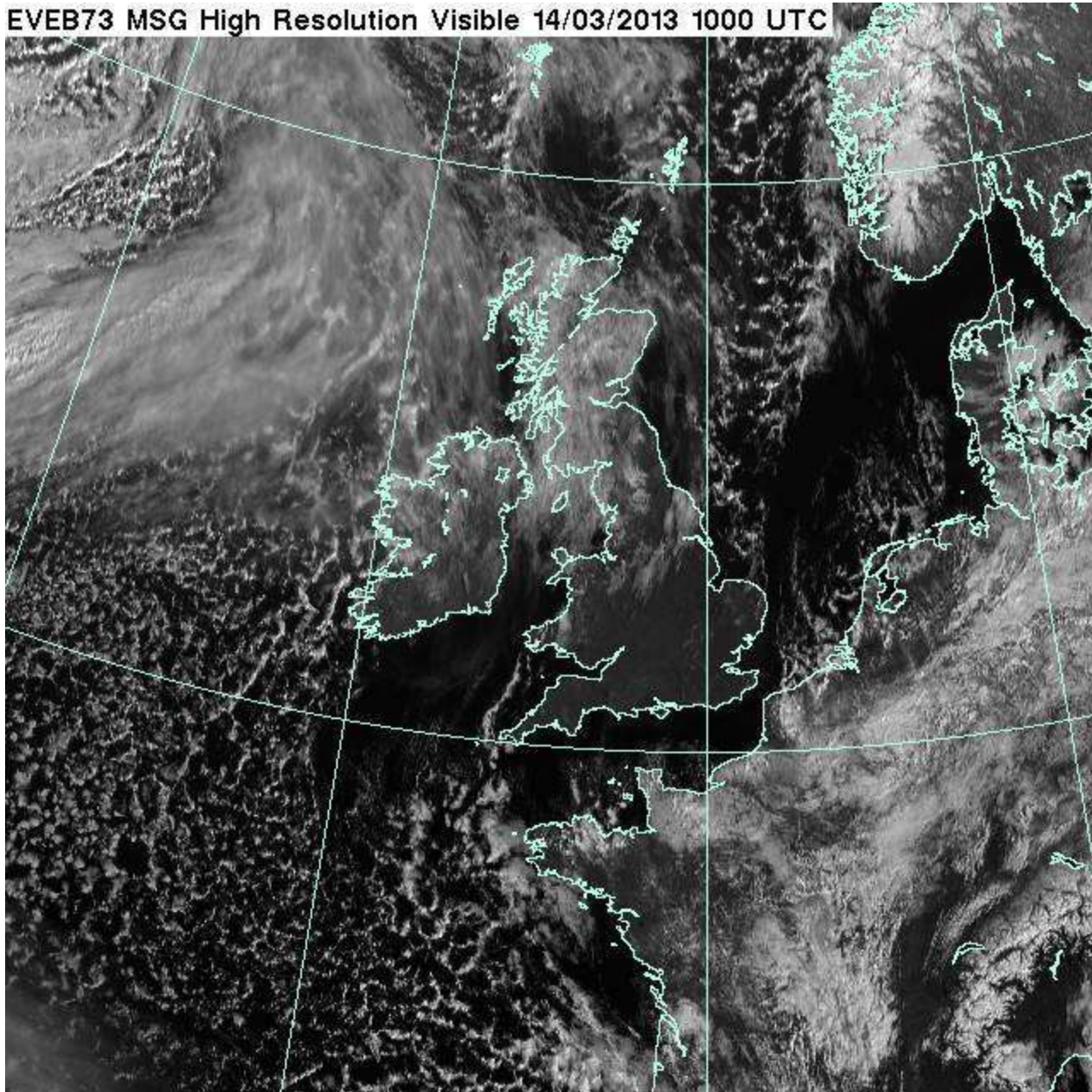
EVEB73 MSG High Resolution Visible 14/03/2013 0800 UTC



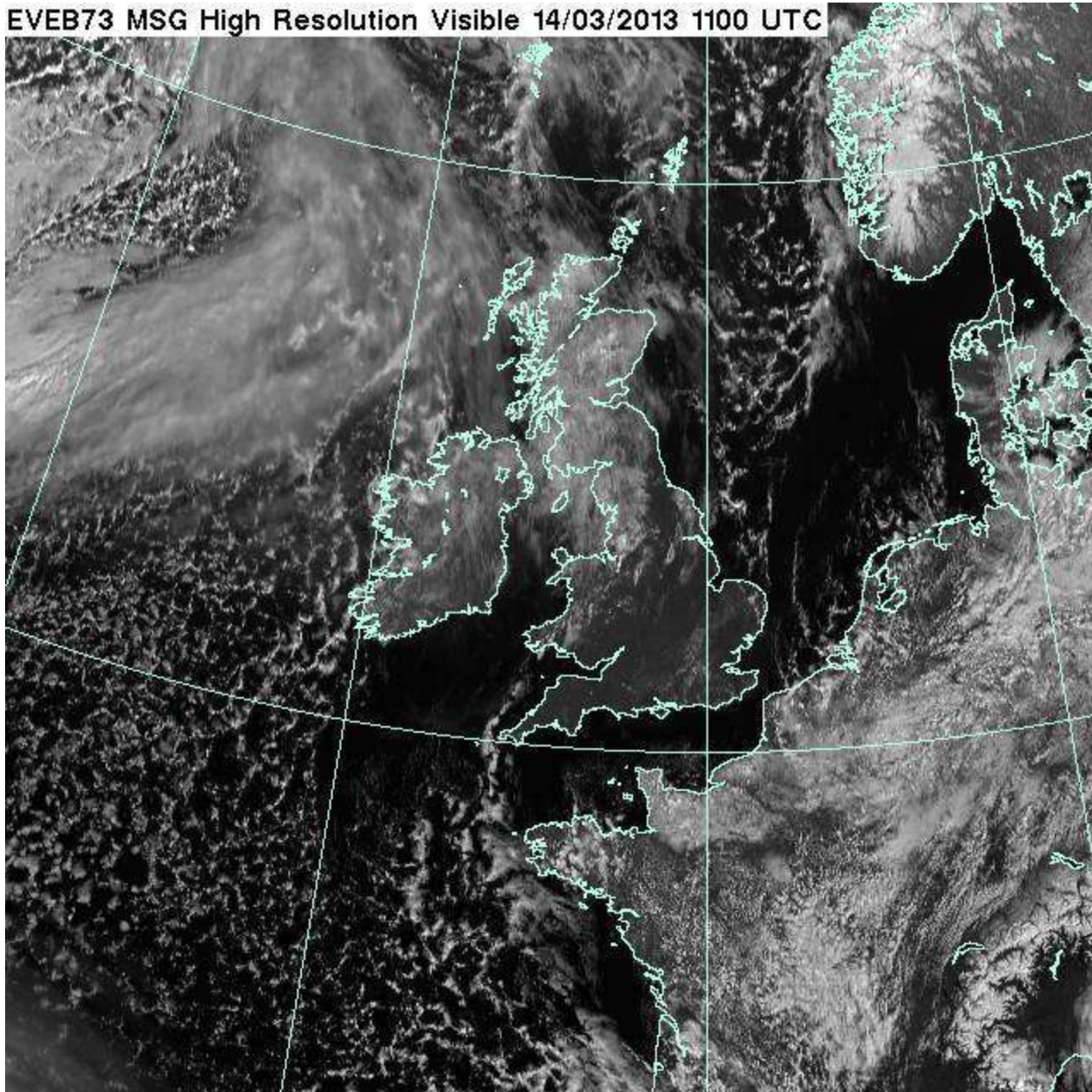
EVEB73 MSG High Resolution Visible 14/03/2013 0900 UTC



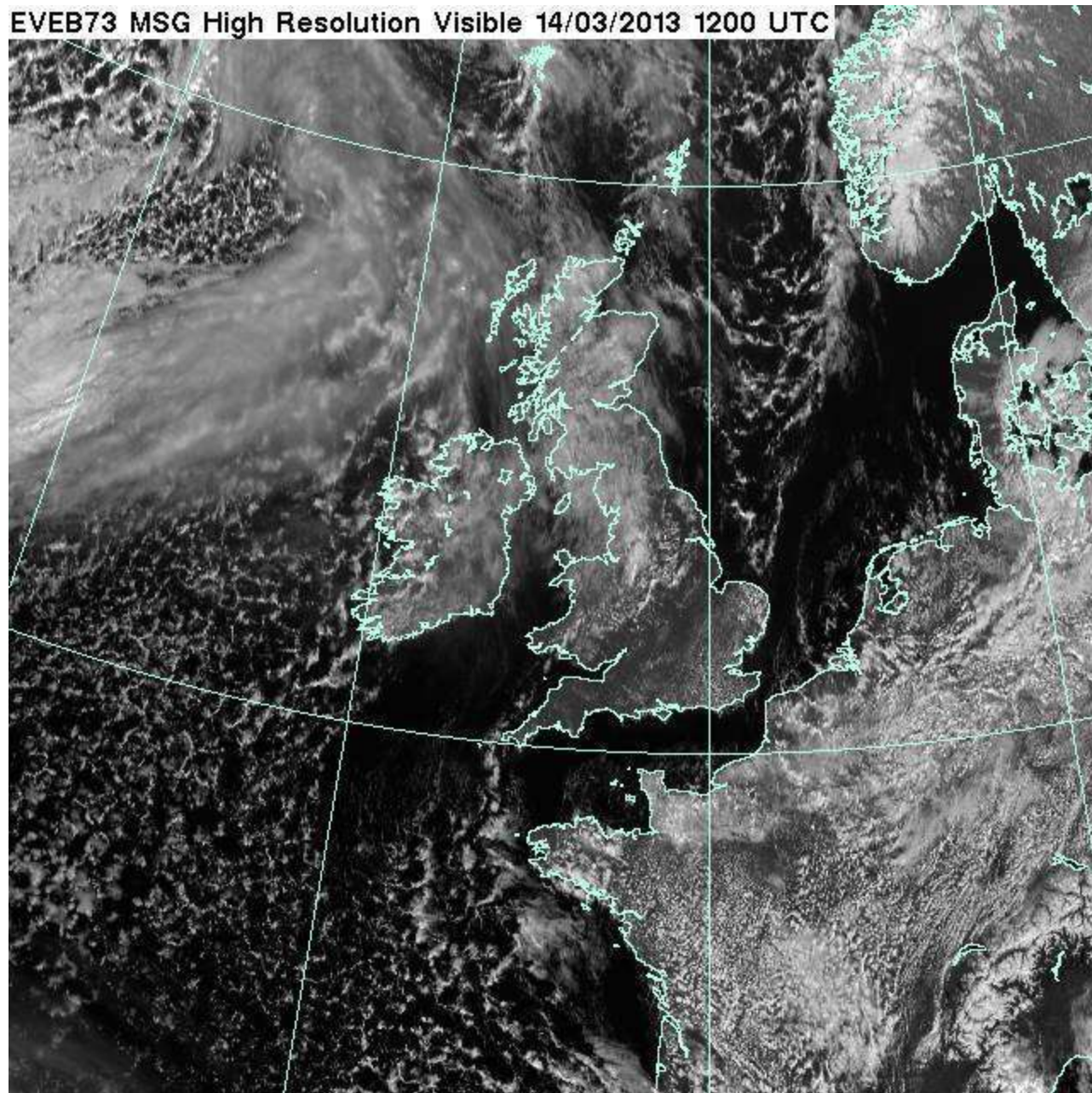
EVEB73 MSG High Resolution Visible 14/03/2013 1000 UTC



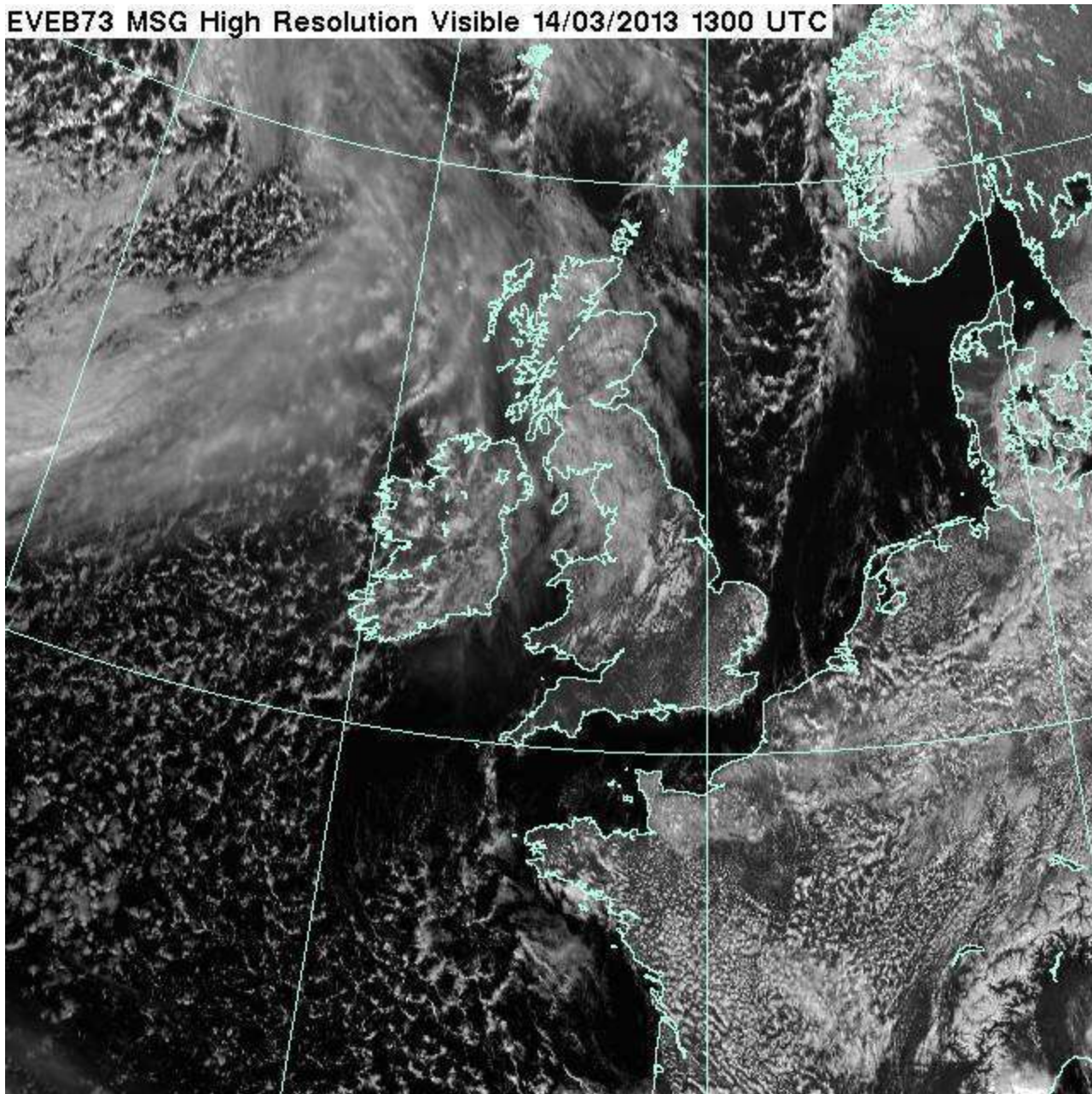
EVEB73 MSG High Resolution Visible 14/03/2013 1100 UTC



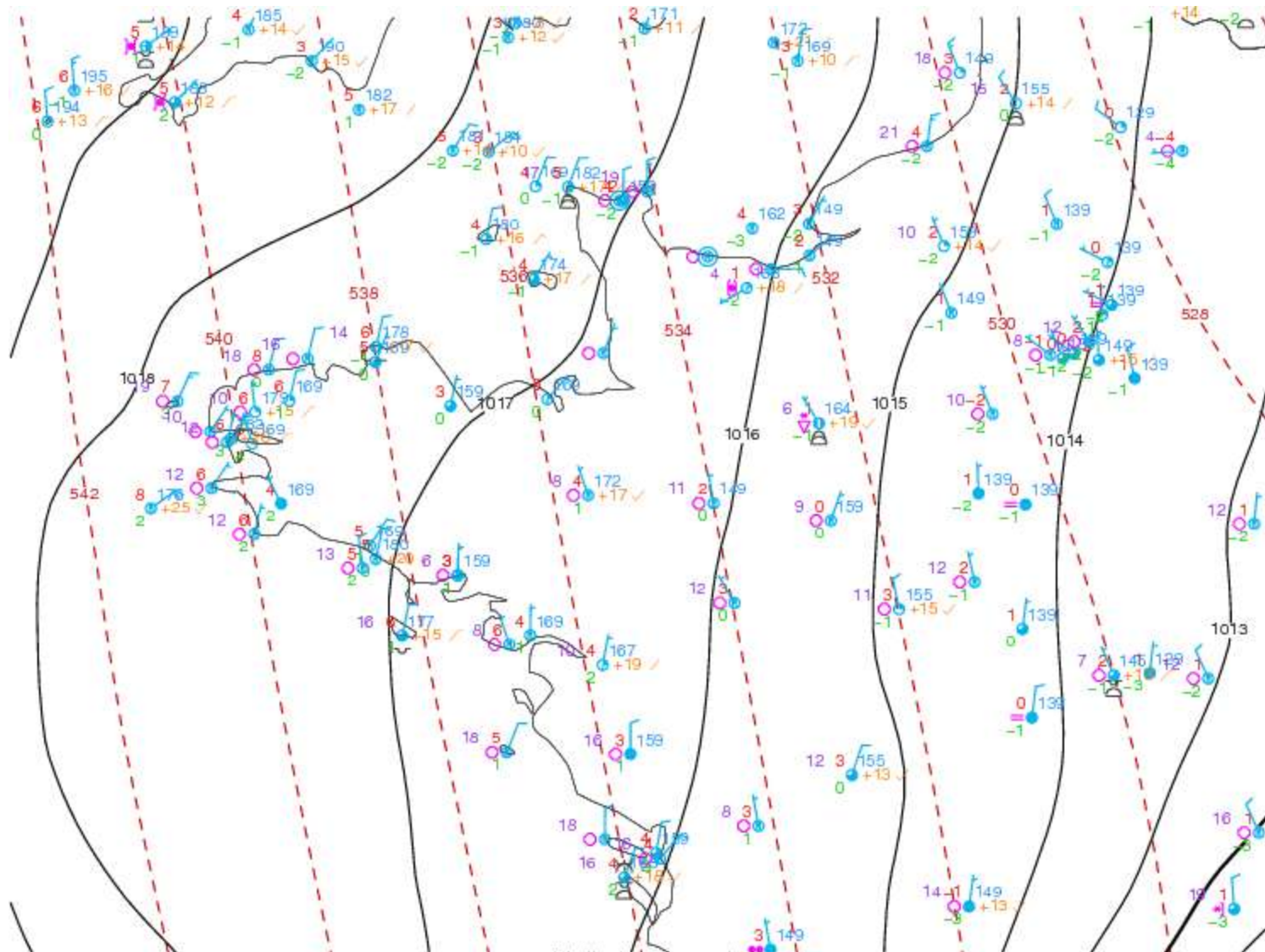
EVEB73 MSG High Resolution Visible 14/03/2013 1200 UTC



EVEB73 MSG High Resolution Visible 14/03/2013 1300 UTC

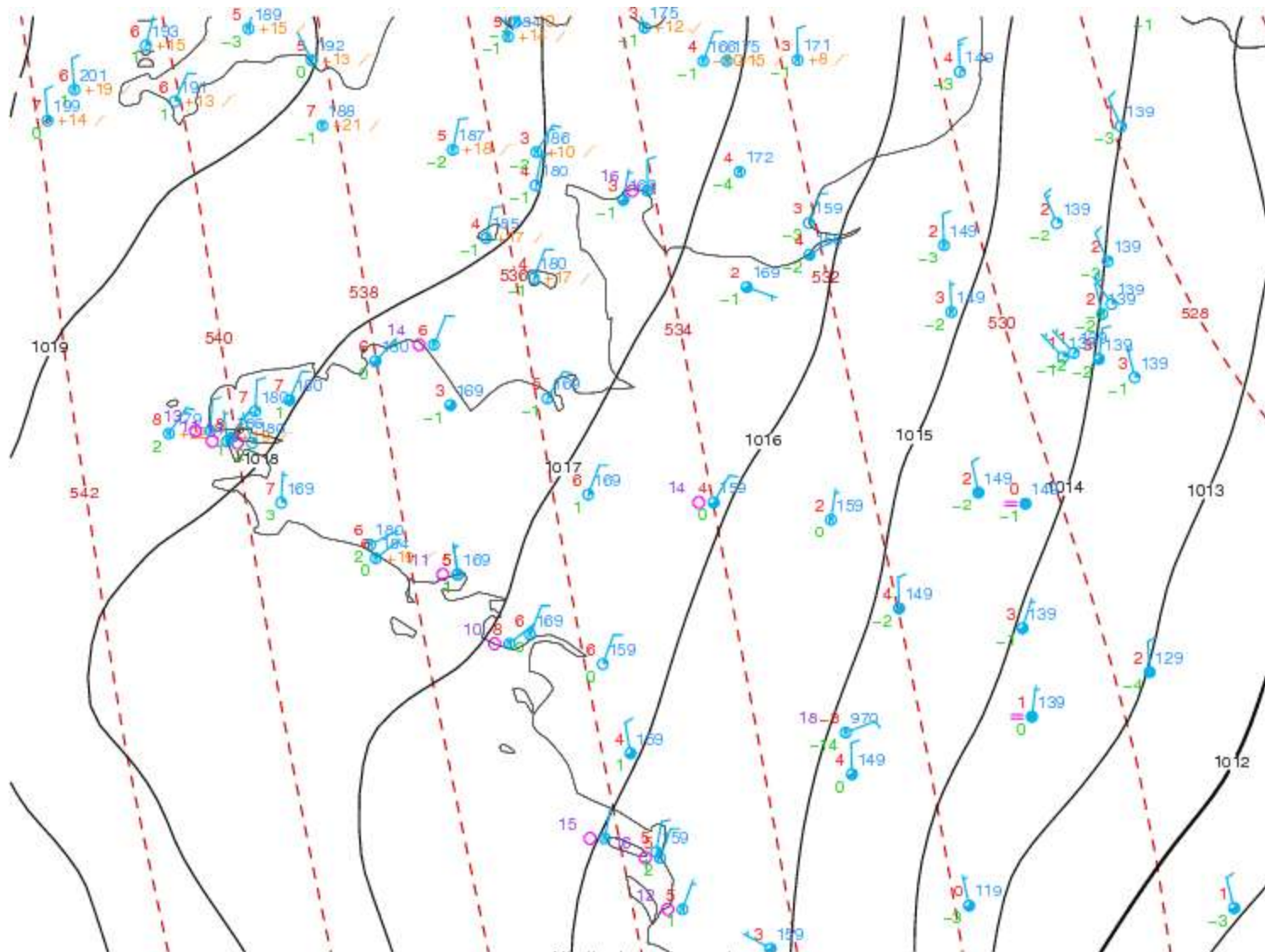






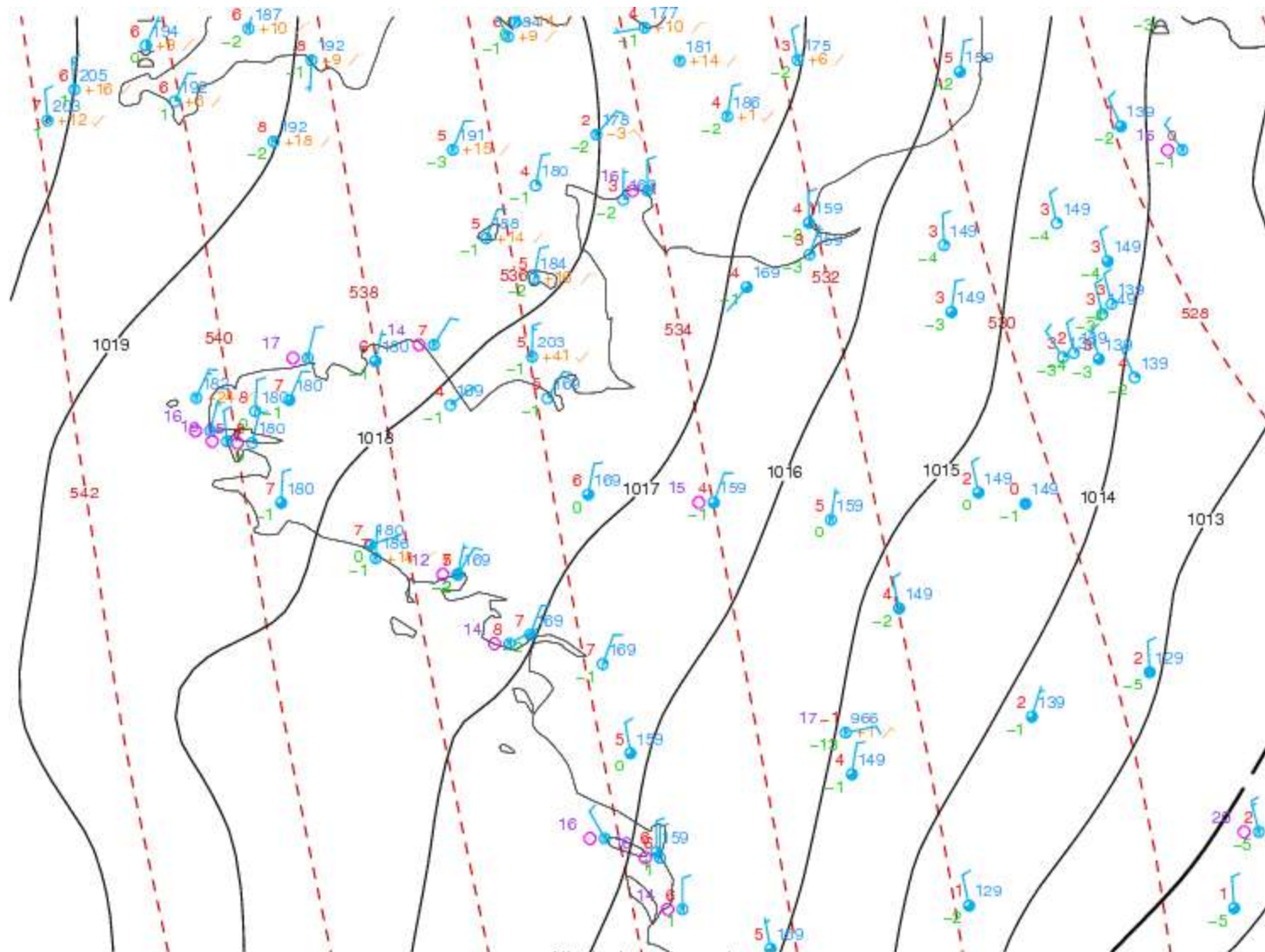
<http://meteocentre.com/>  
 Surface plot stc/130314.0900 / upa/130314.00





<http://meteocentre.com/>  
 Surface plot stc/130314/1000 / upa/130314.00

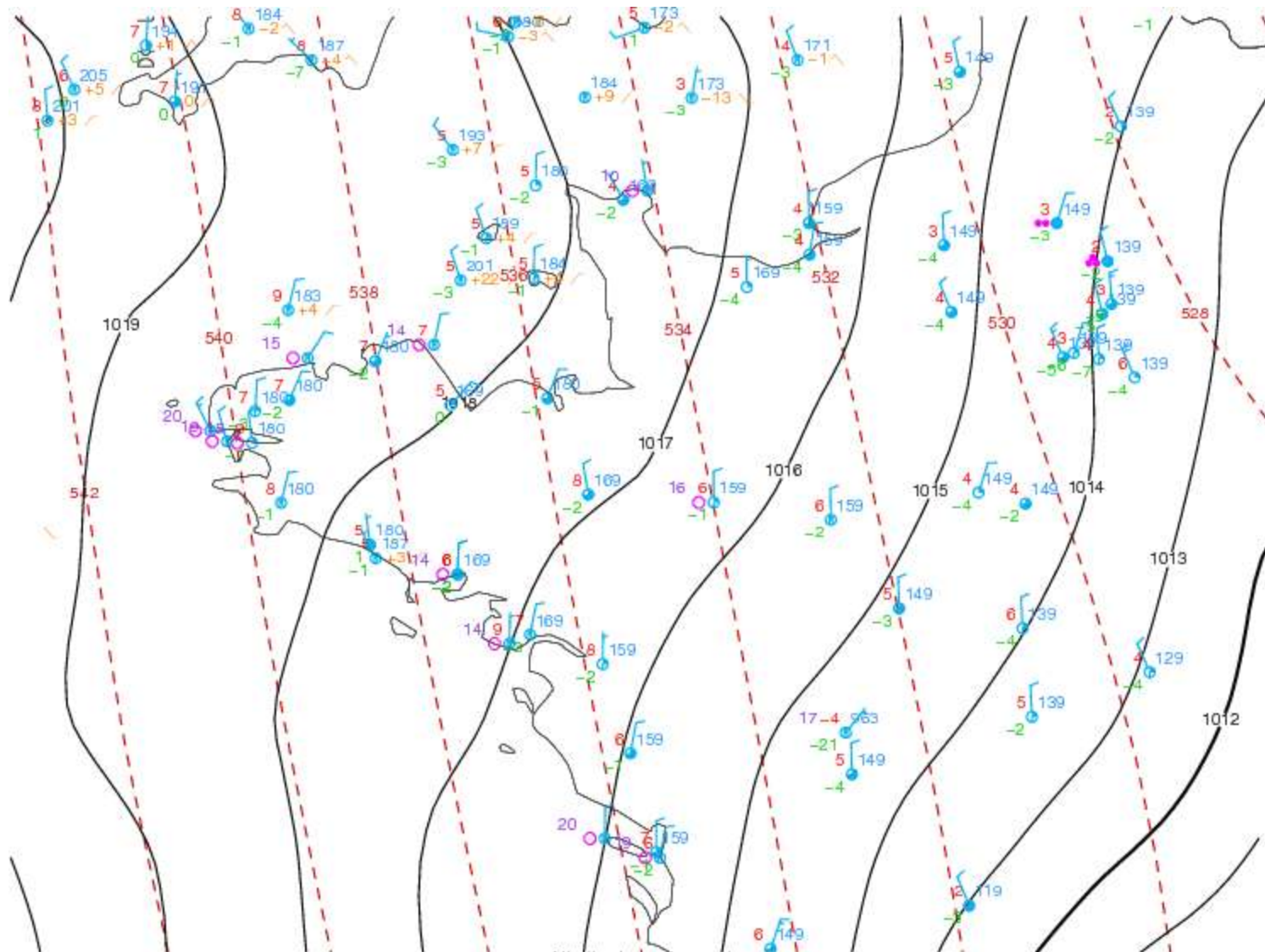




<http://meteocentre.com/>  
 Surface plot sfc/130314/1100 / upa/130314.00

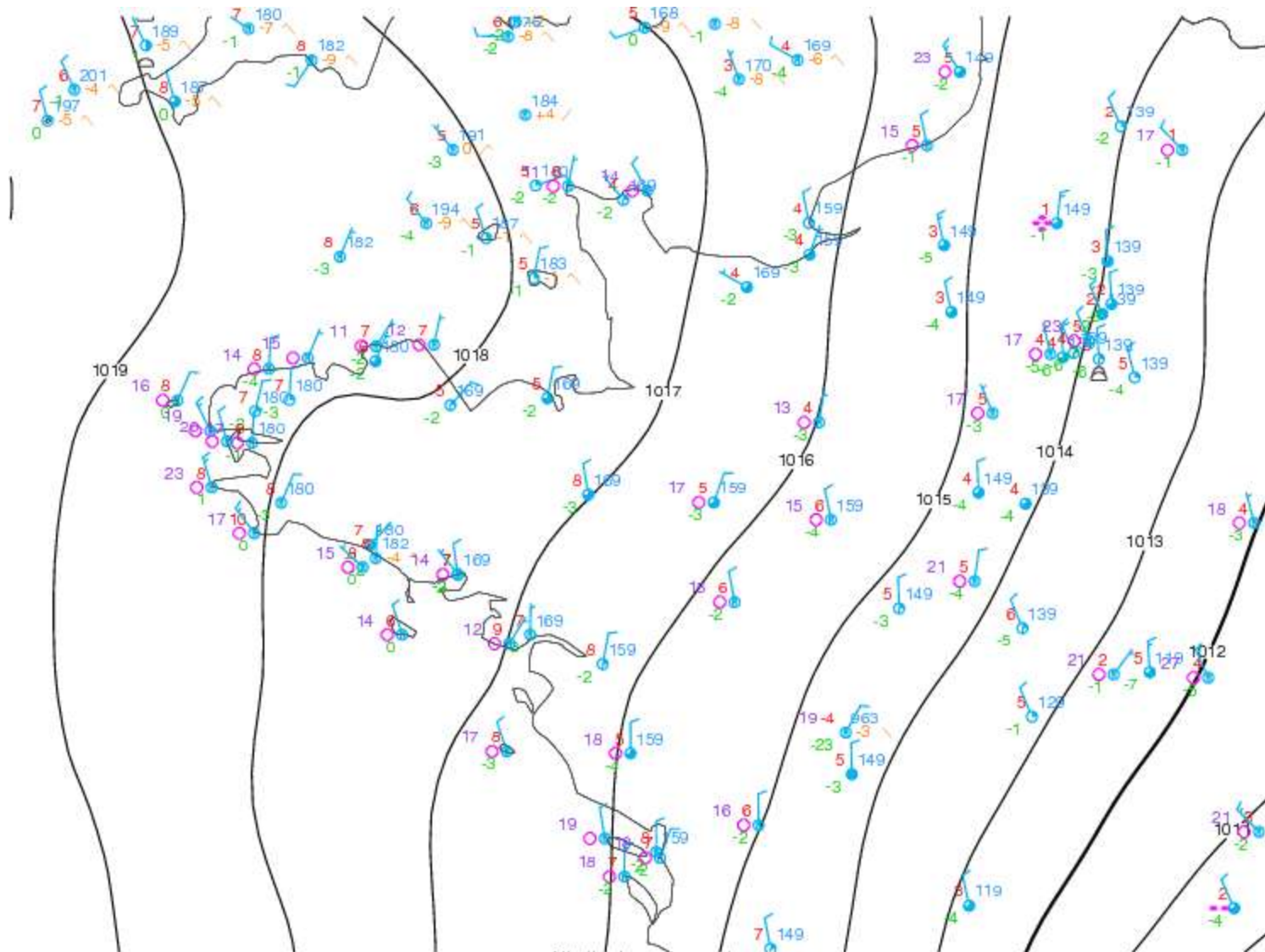






<http://meteocentre.com/>  
 Surface plot sfc/130314/1300 / upa/130314.00





<http://meteocentre.com/>  
 Surface plot sfc/130314/1400 / upa/130314/12

