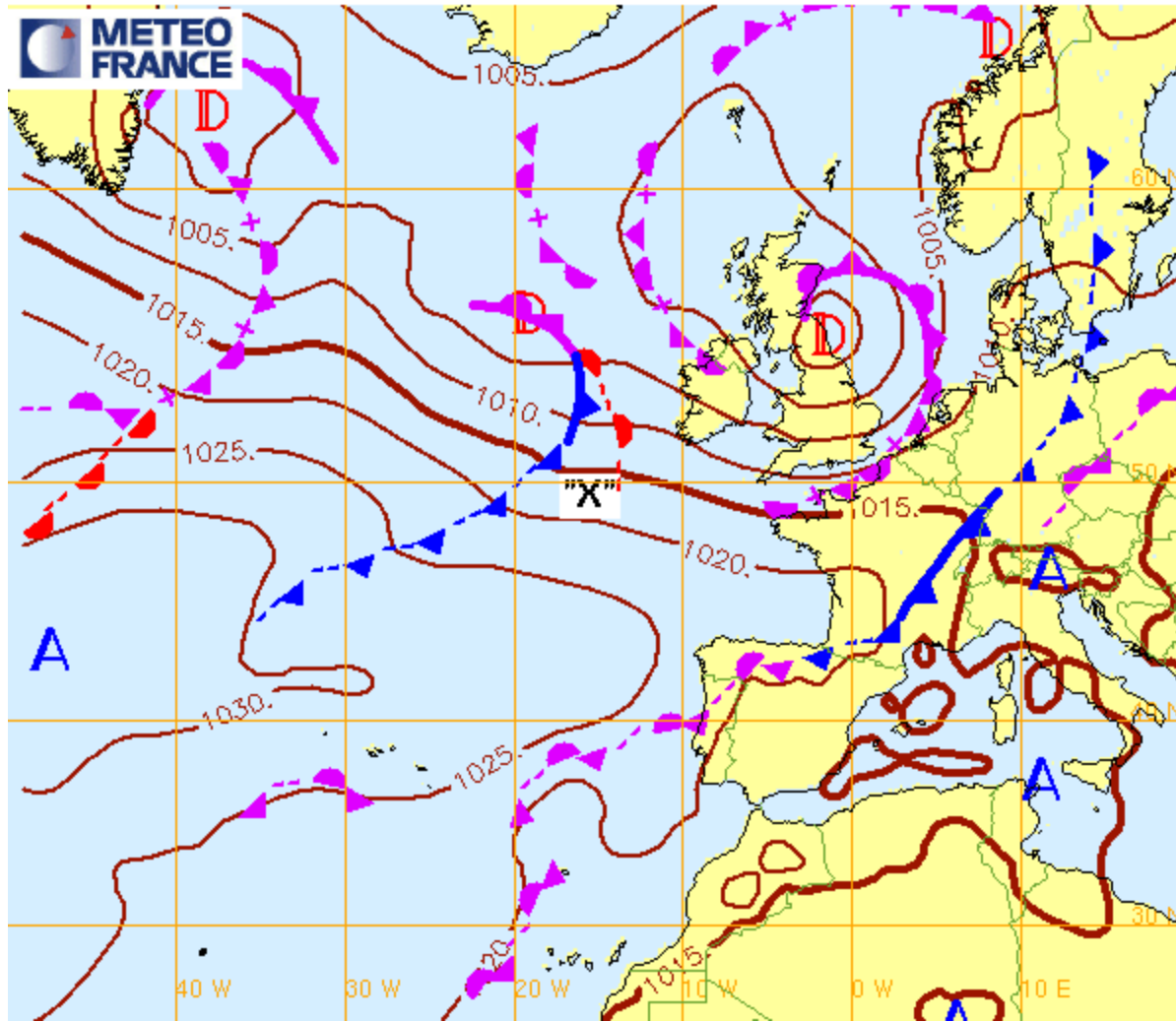


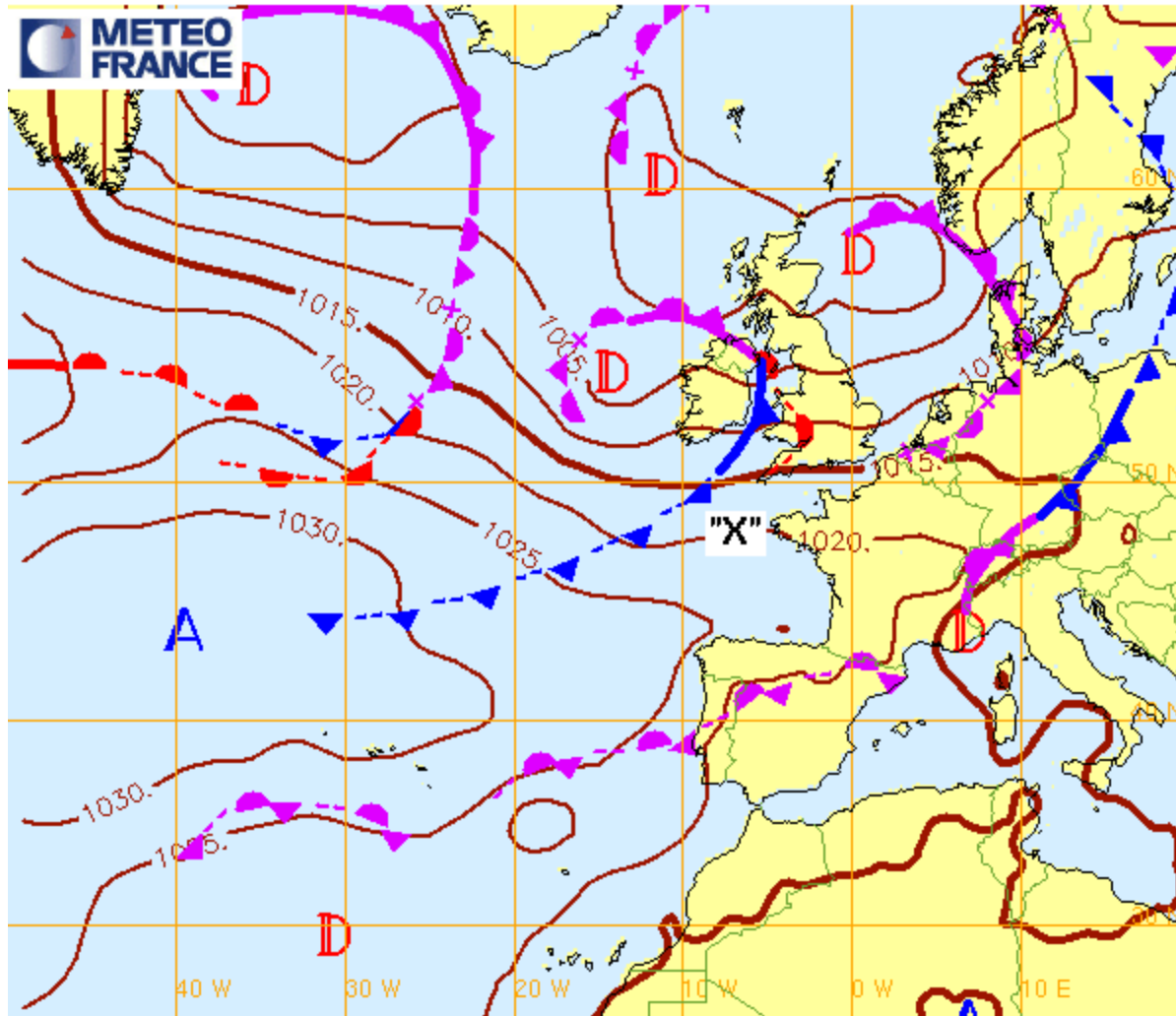
VENDREDI 10 MAI 2HLOC

Analyse Fronts et isobares du 10/05/2013 00hUTC (reseau: 10/05/2013 00hUTC)



VENDREDI 10 MAI 14HLOC

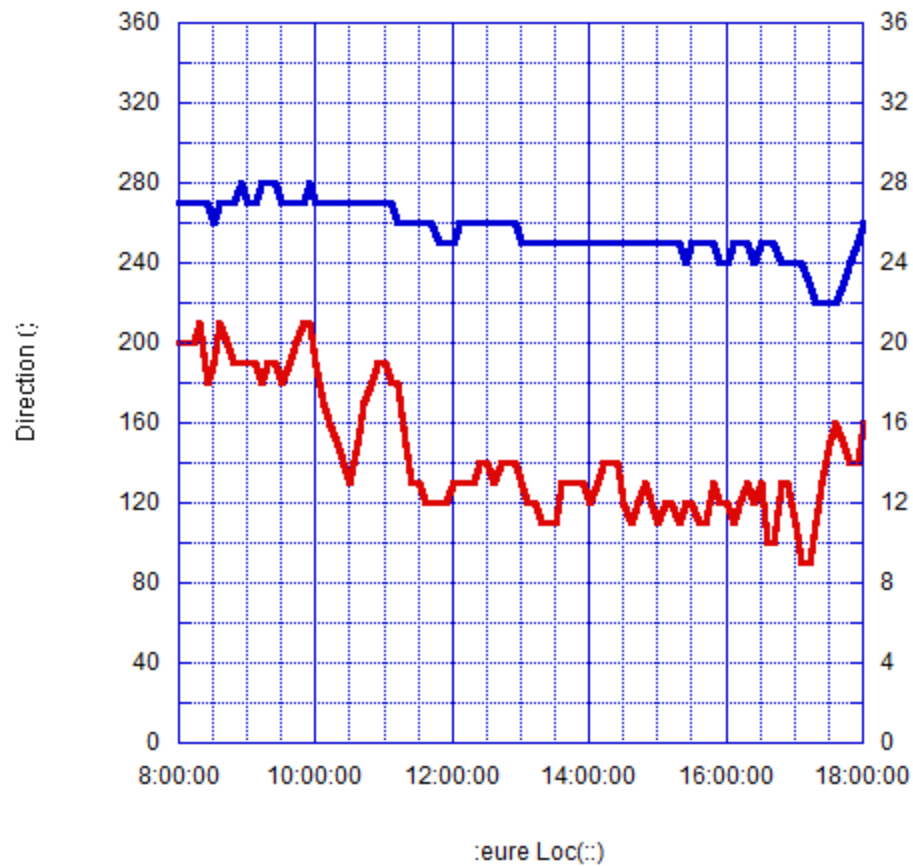
Analyse Fronts et isobares du 10/05/2013 12hUTC (reseau: 10/05/2013 12hUTC)



Direction (°)

Force du vent (noeuds)

2013 05 10 GROIX

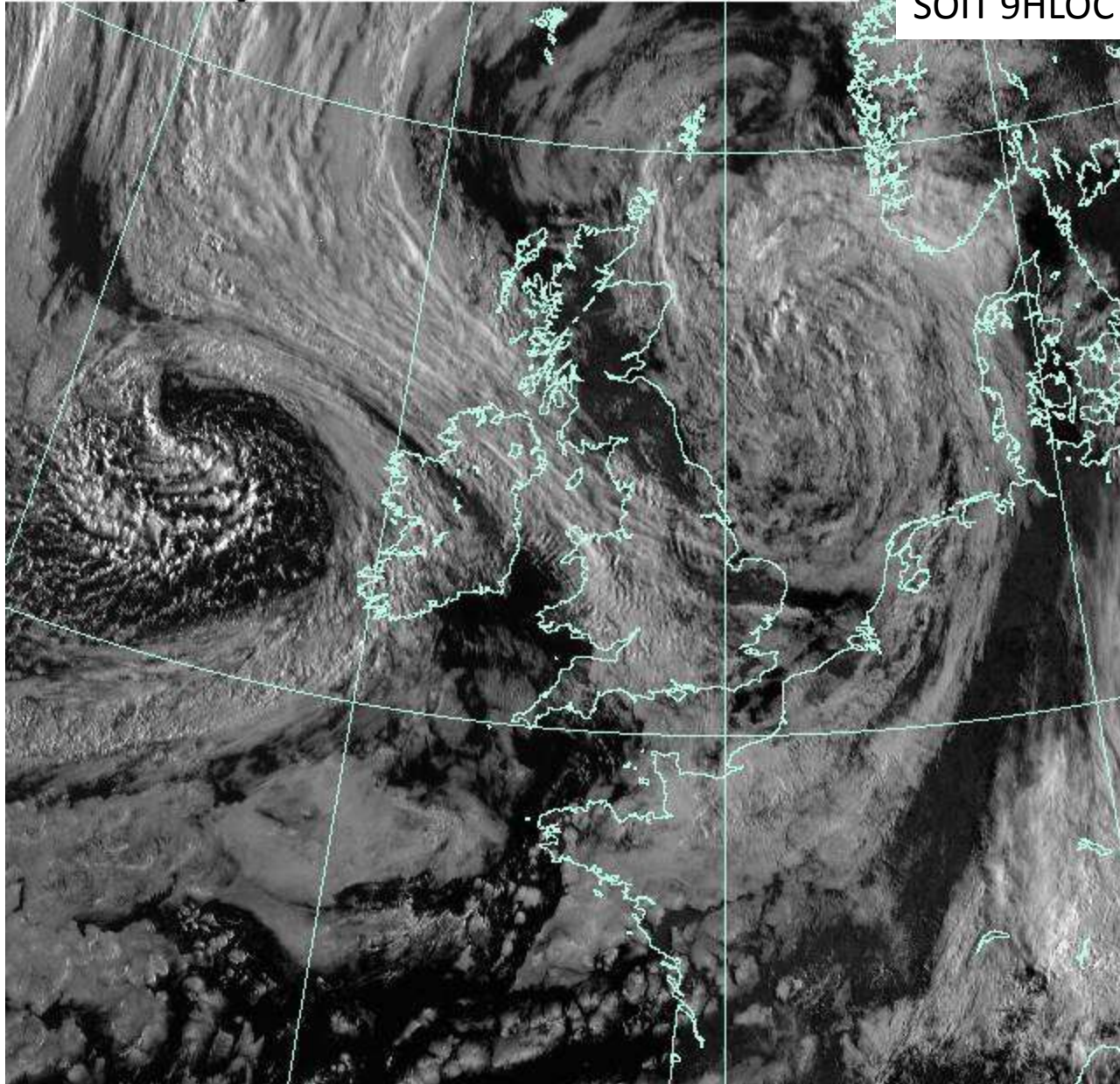


Force du vent (noeuds):

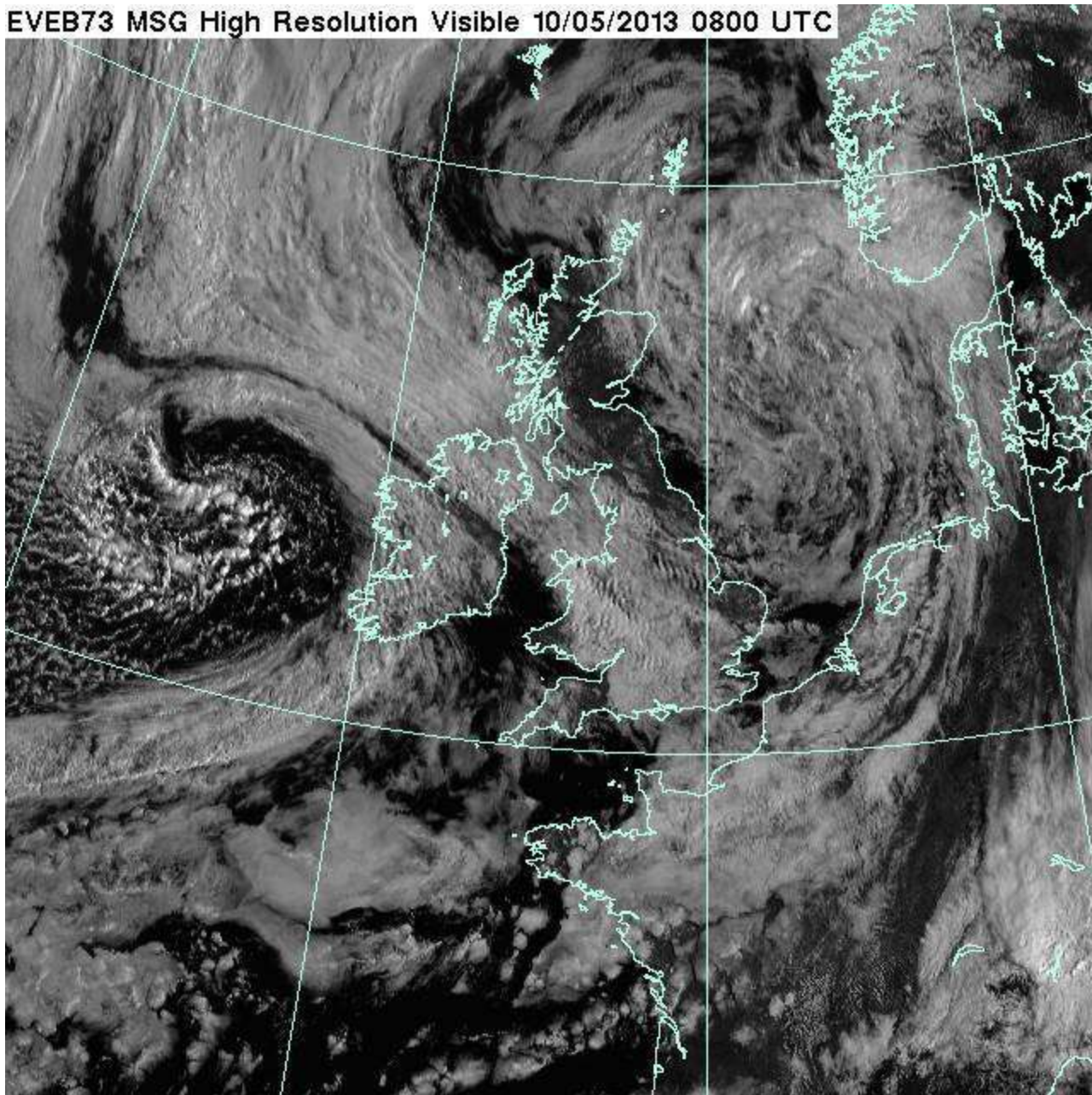


EVEB73 MSG High Resolution Visible 10/05/2013 0700 UTC

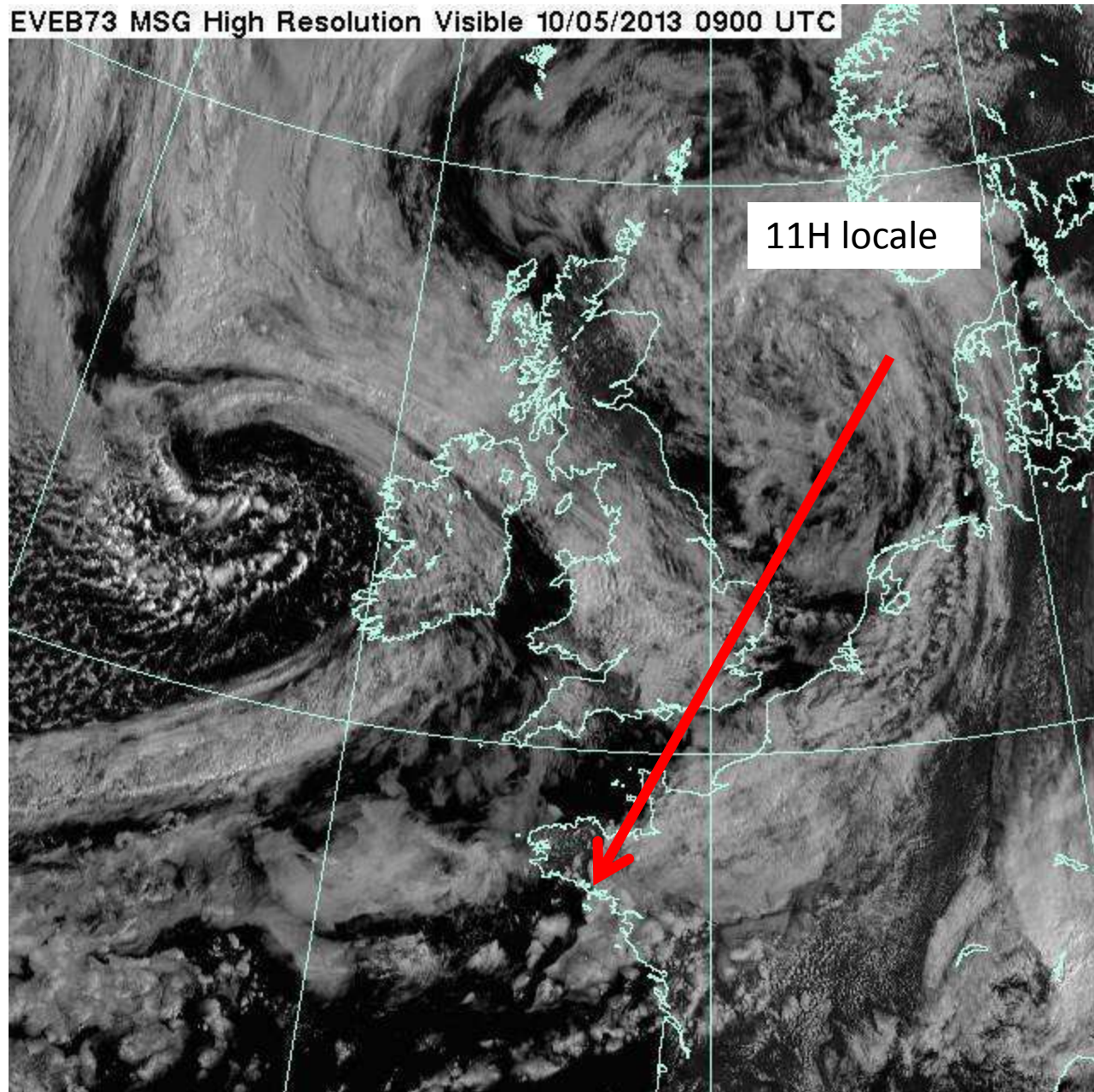
SOIT 9HLOC



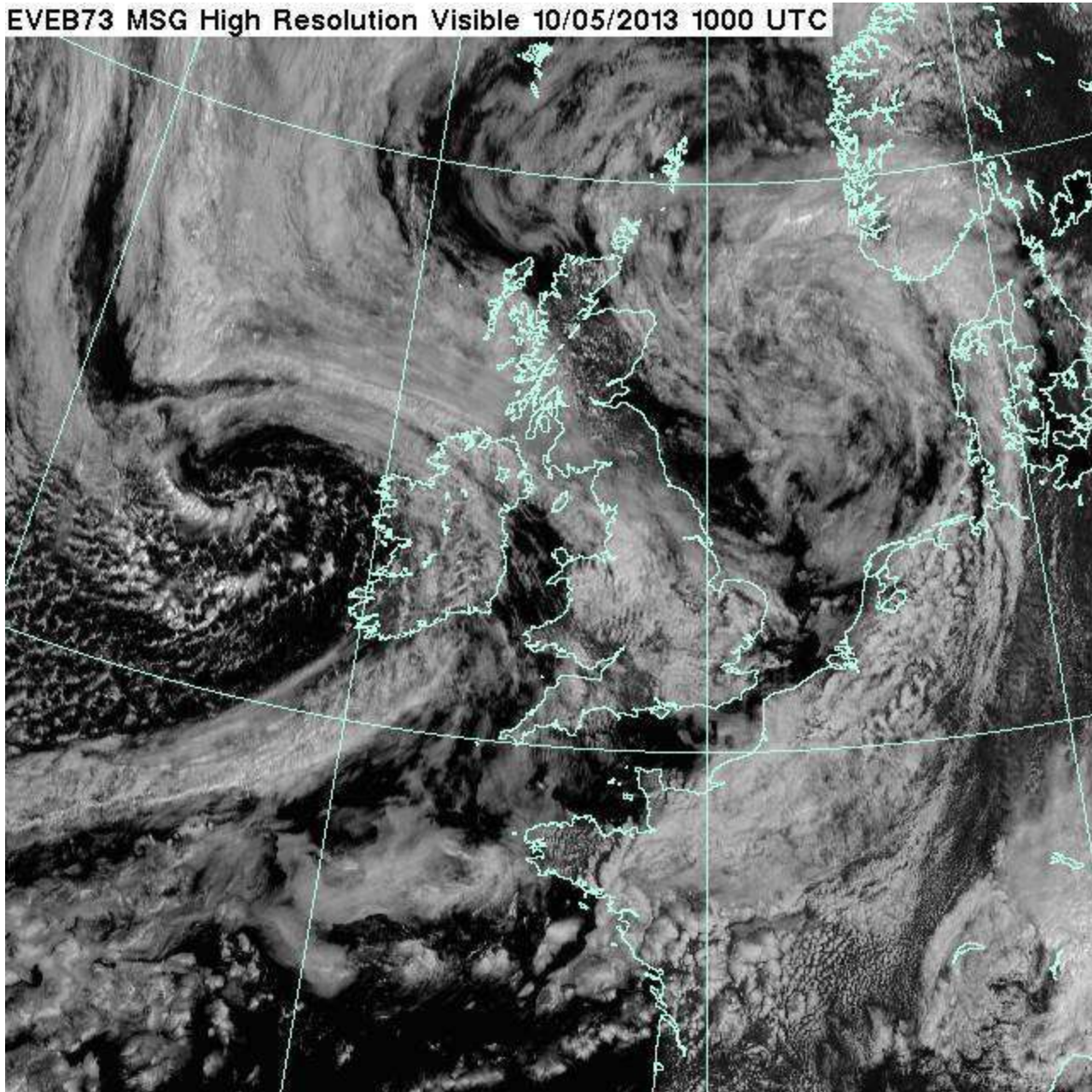
EVEB73 MSG High Resolution Visible 10/05/2013 0800 UTC



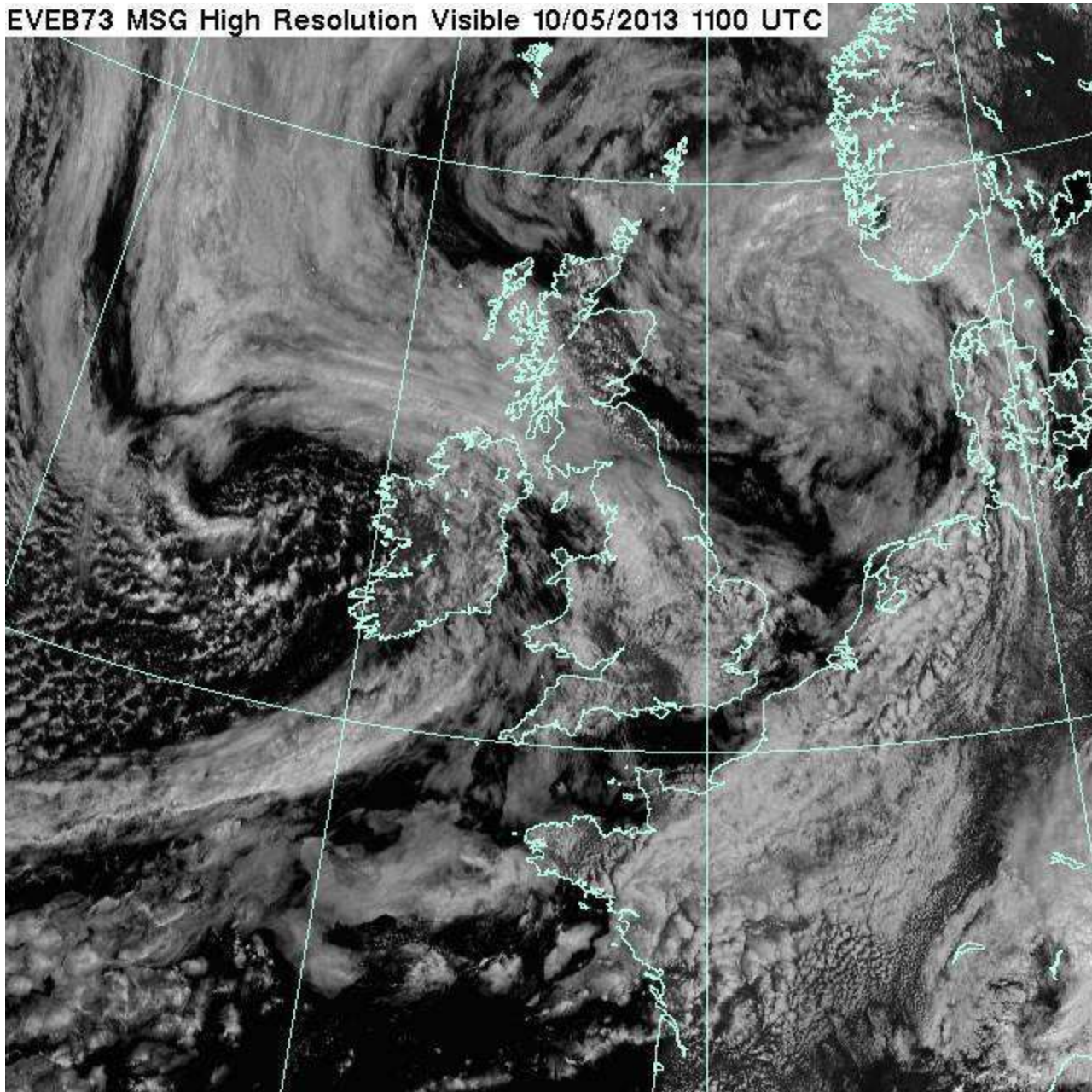
EVEB73 MSG High Resolution Visible 10/05/2013 0900 UTC



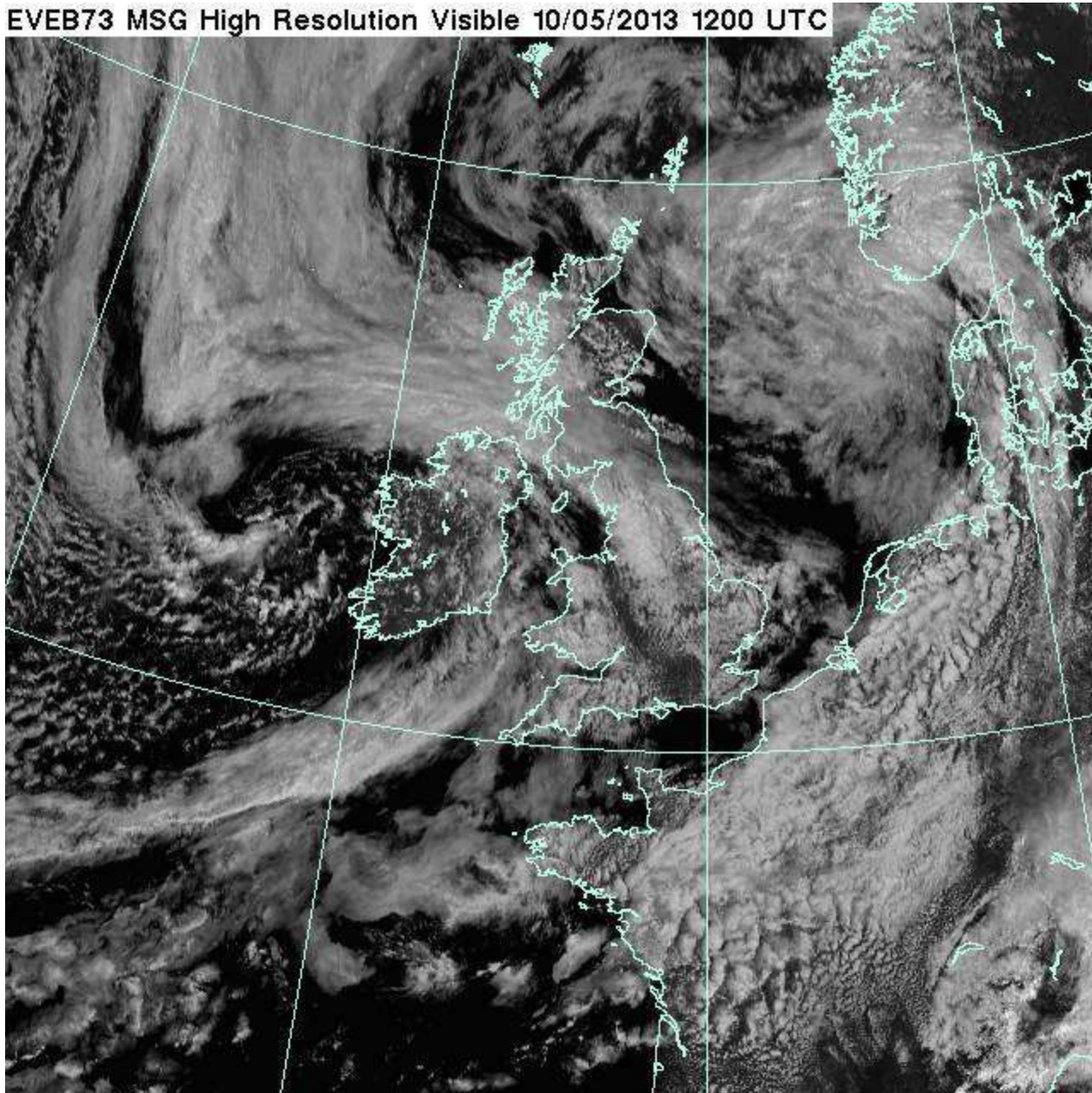
EVEB73 MSG High Resolution Visible 10/05/2013 1000 UTC



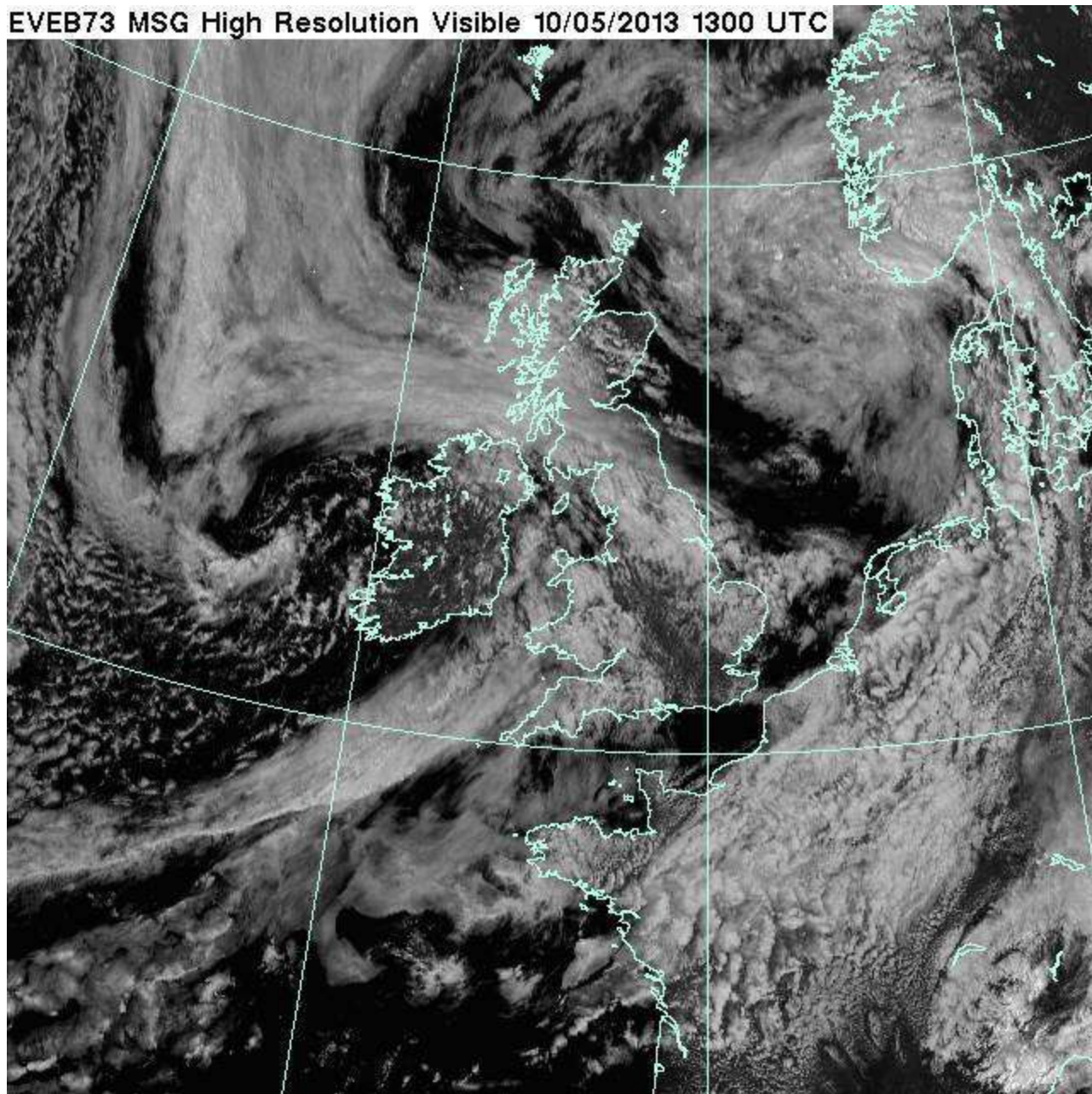
EVEB73 MSG High Resolution Visible 10/05/2013 1100 UTC



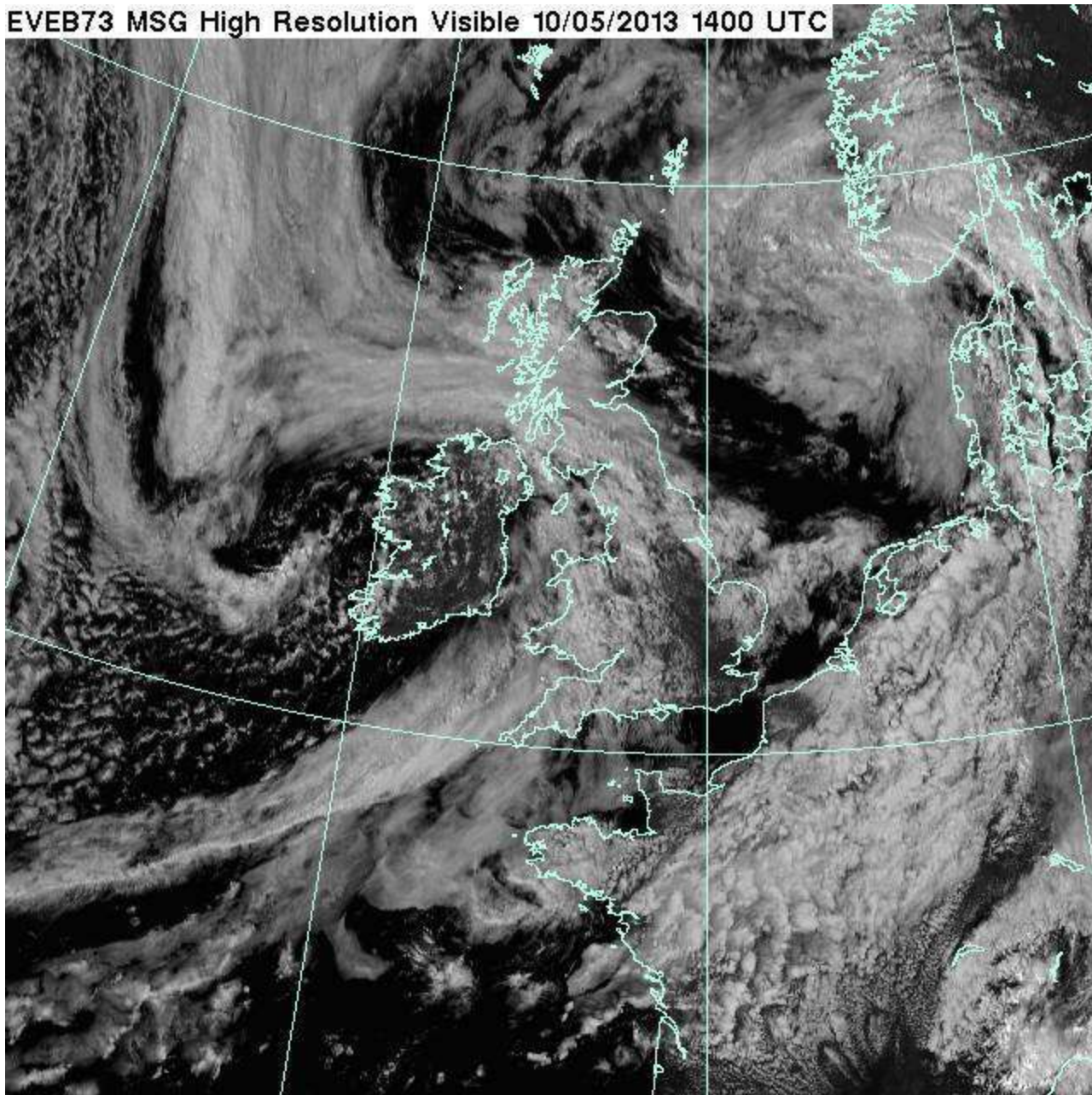
EVEB73 MSG High Resolution Visible 10/05/2013 1200 UTC



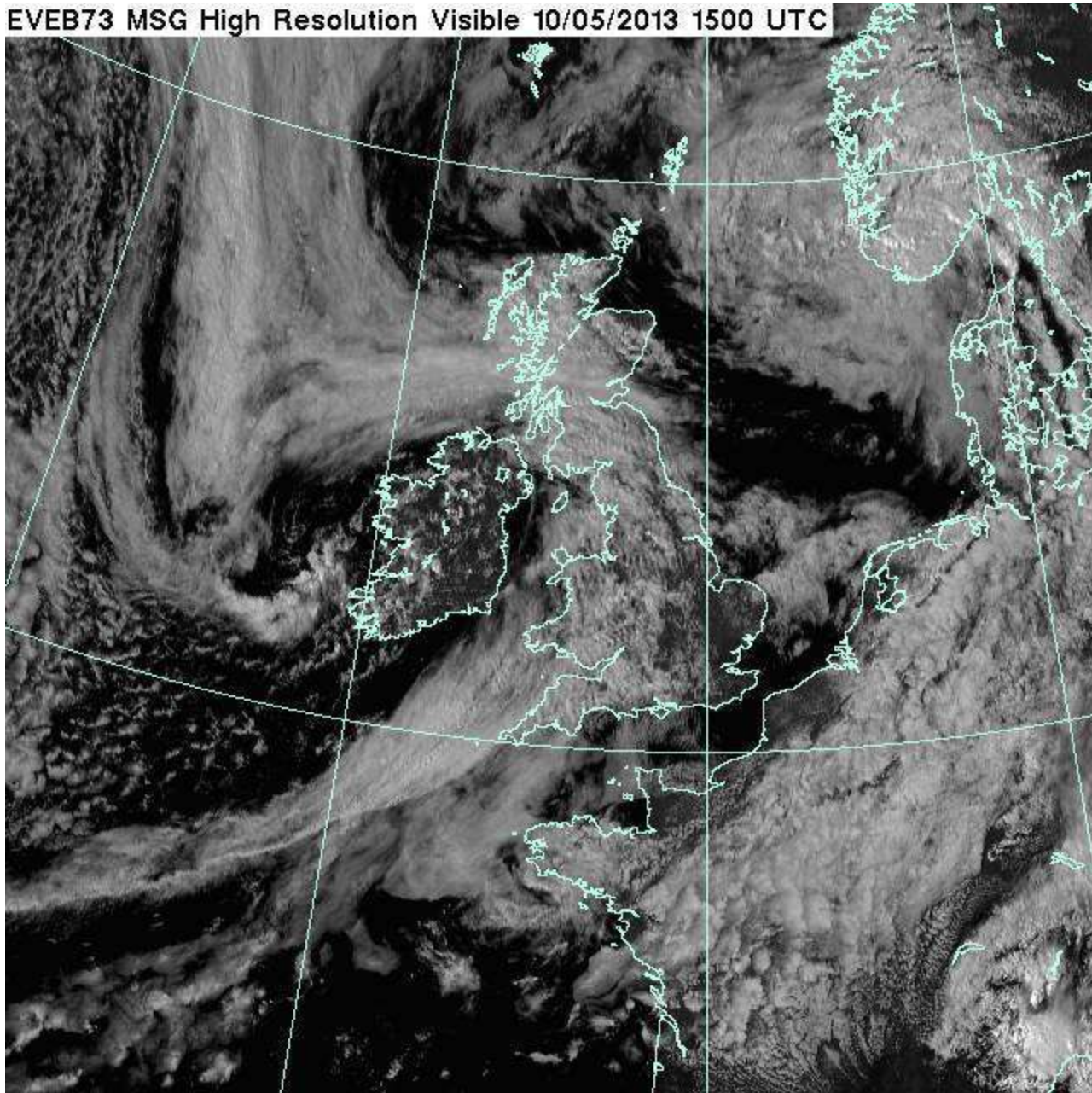
EVEB73 MSG High Resolution Visible 10/05/2013 1300 UTC



EVEB73 MSG High Resolution Visible 10/05/2013 1400 UTC



EVEB73 MSG High Resolution Visible 10/05/2013 1500 UTC



10H30 LOC



10H54



11H



11H30



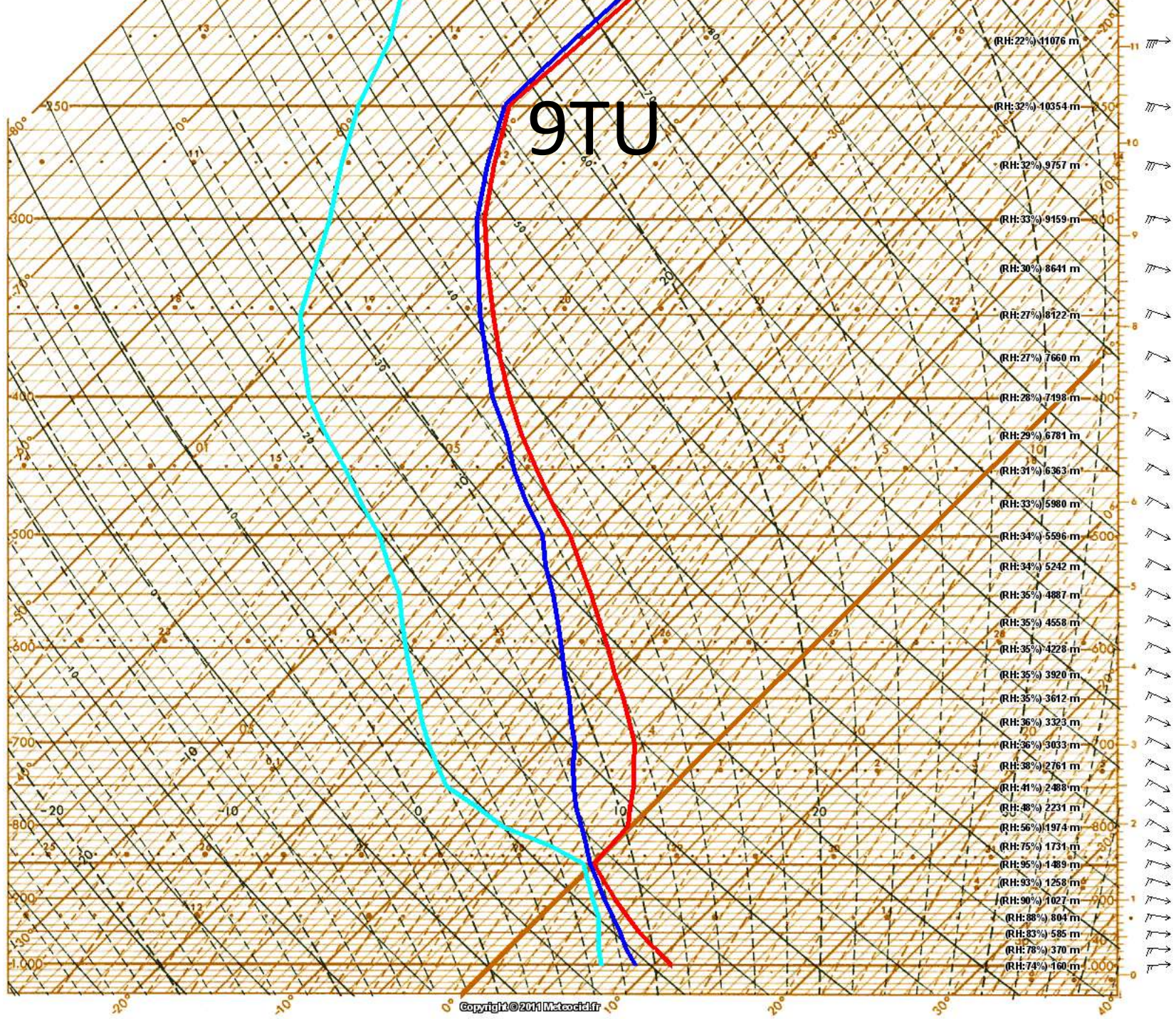
13H15



14H50



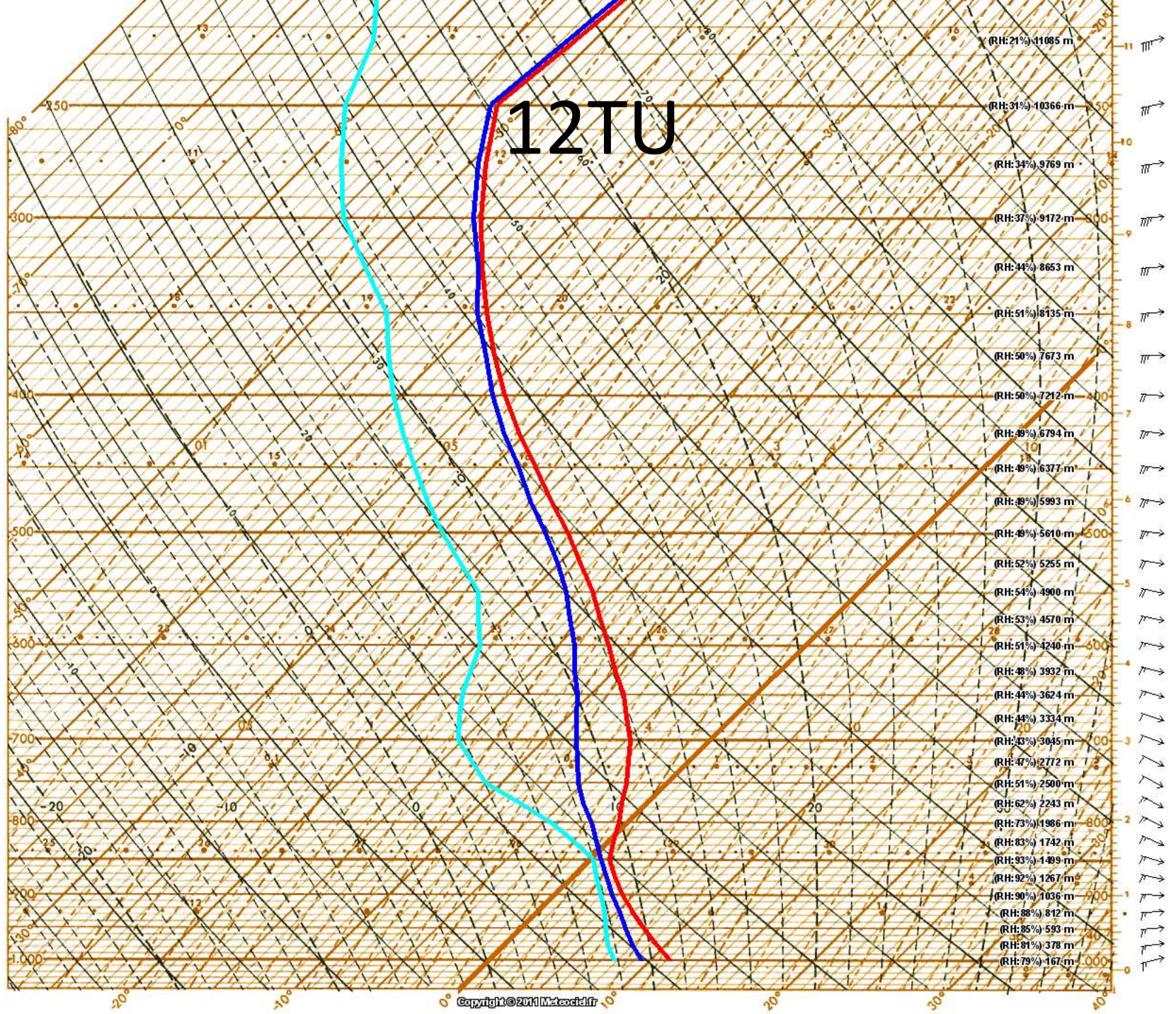
9TU



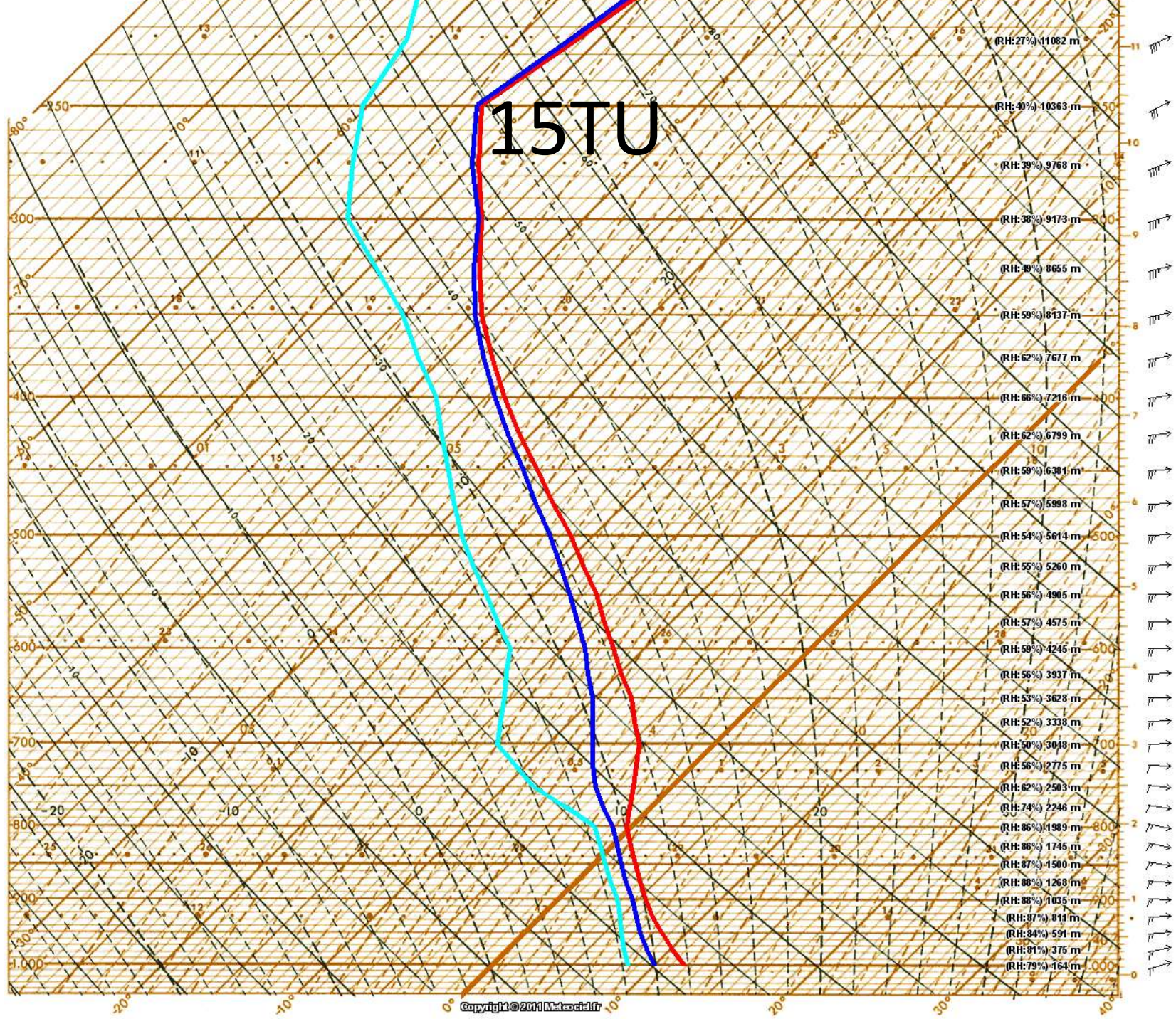
Relative Humidity (RH)	Height (m)
22%	11076 m
32%	10354 m
32%	9757 m
33%	9159 m
30%	8641 m
27%	8122 m
27%	7660 m
28%	7198 m
29%	6781 m
31%	6363 m
33%	5980 m
34%	5596 m
34%	5242 m
35%	4887 m
35%	4558 m
35%	4226 m
35%	3920 m
35%	3612 m
36%	3323 m
36%	3033 m
38%	2761 m
41%	2488 m
48%	2231 m
56%	1974 m
75%	1731 m
95%	1489 m
93%	1258 m
90%	1027 m
88%	804 m
83%	585 m
78%	370 m
74%	160 m



12TU

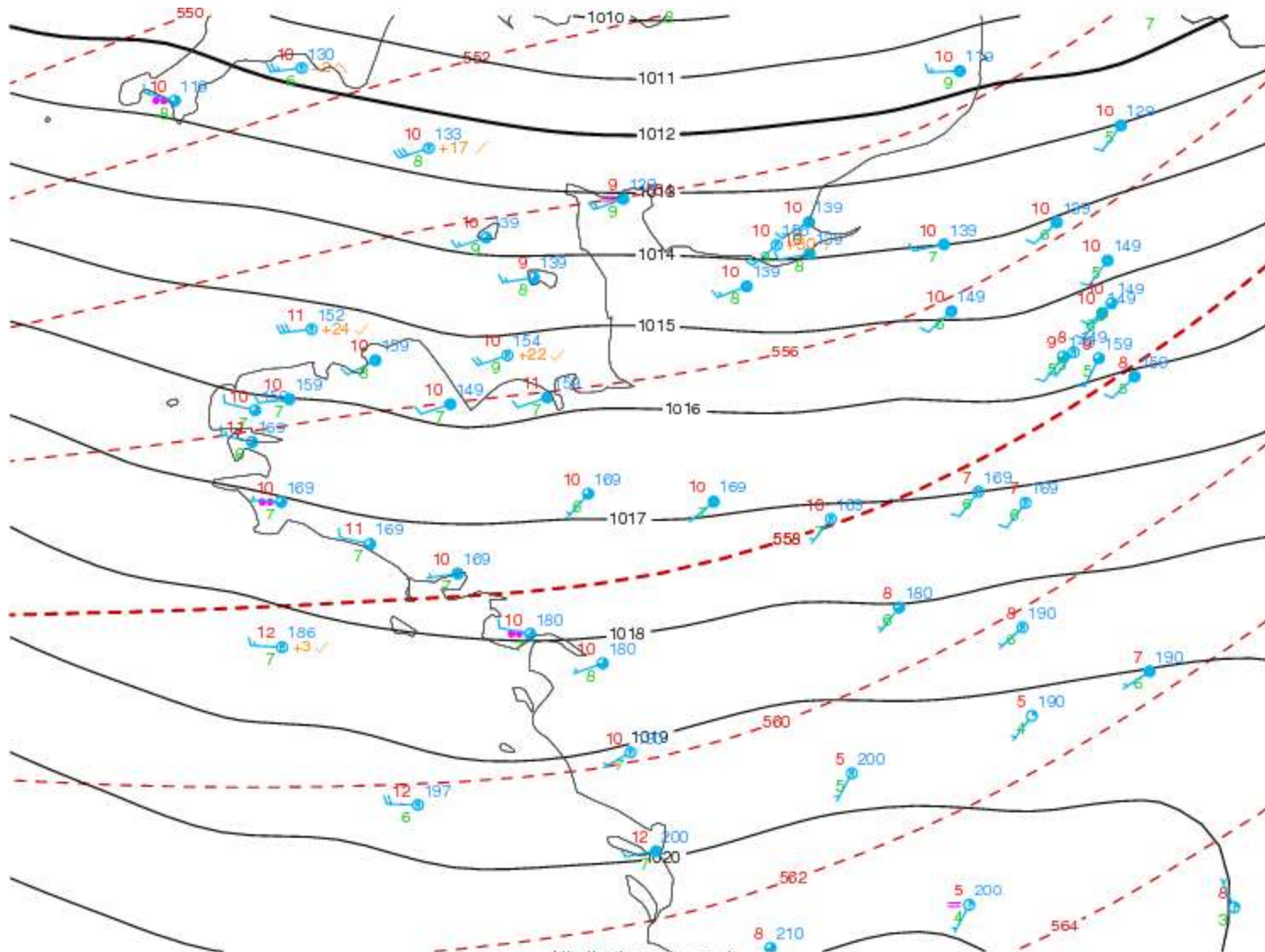


15TU



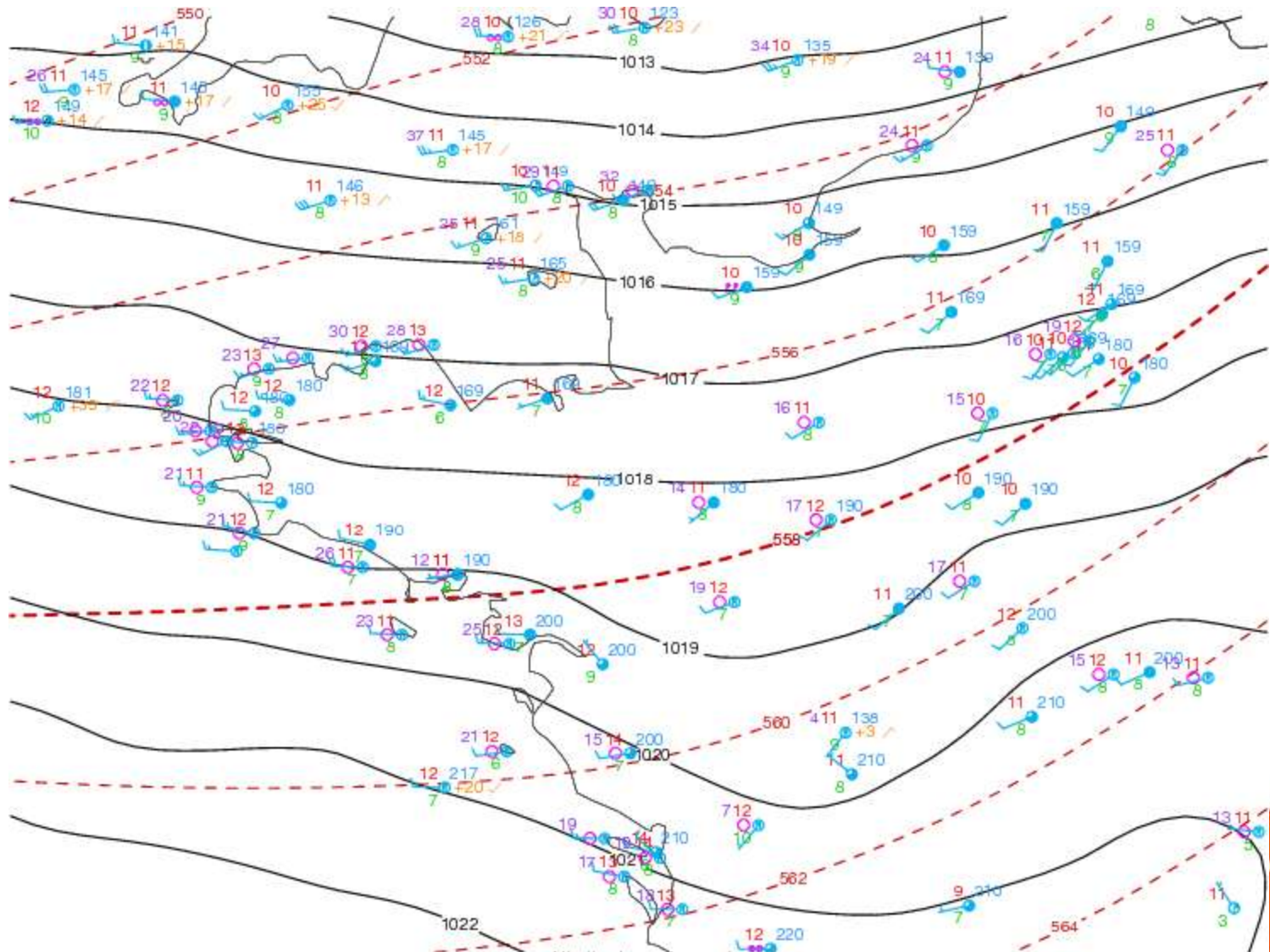
Relative Humidity (RH)	Altitude (m)
(RH: 27%)	11082 m
(RH: 40%)	10363 m
(RH: 39%)	9768 m
(RH: 38%)	9173 m
(RH: 49%)	8655 m
(RH: 59%)	8137 m
(RH: 62%)	7677 m
(RH: 66%)	7216 m
(RH: 62%)	6799 m
(RH: 59%)	6384 m
(RH: 57%)	5998 m
(RH: 54%)	5614 m
(RH: 55%)	5260 m
(RH: 56%)	4905 m
(RH: 57%)	4575 m
(RH: 59%)	4245 m
(RH: 56%)	3937 m
(RH: 53%)	3628 m
(RH: 52%)	3338 m
(RH: 50%)	3048 m
(RH: 56%)	2775 m
(RH: 62%)	2503 m
(RH: 74%)	2246 m
(RH: 86%)	1989 m
(RH: 86%)	1745 m
(RH: 87%)	1500 m
(RH: 88%)	1268 m
(RH: 88%)	1035 m
(RH: 87%)	814 m
(RH: 84%)	591 m
(RH: 81%)	375 m
(RH: 79%)	164 m





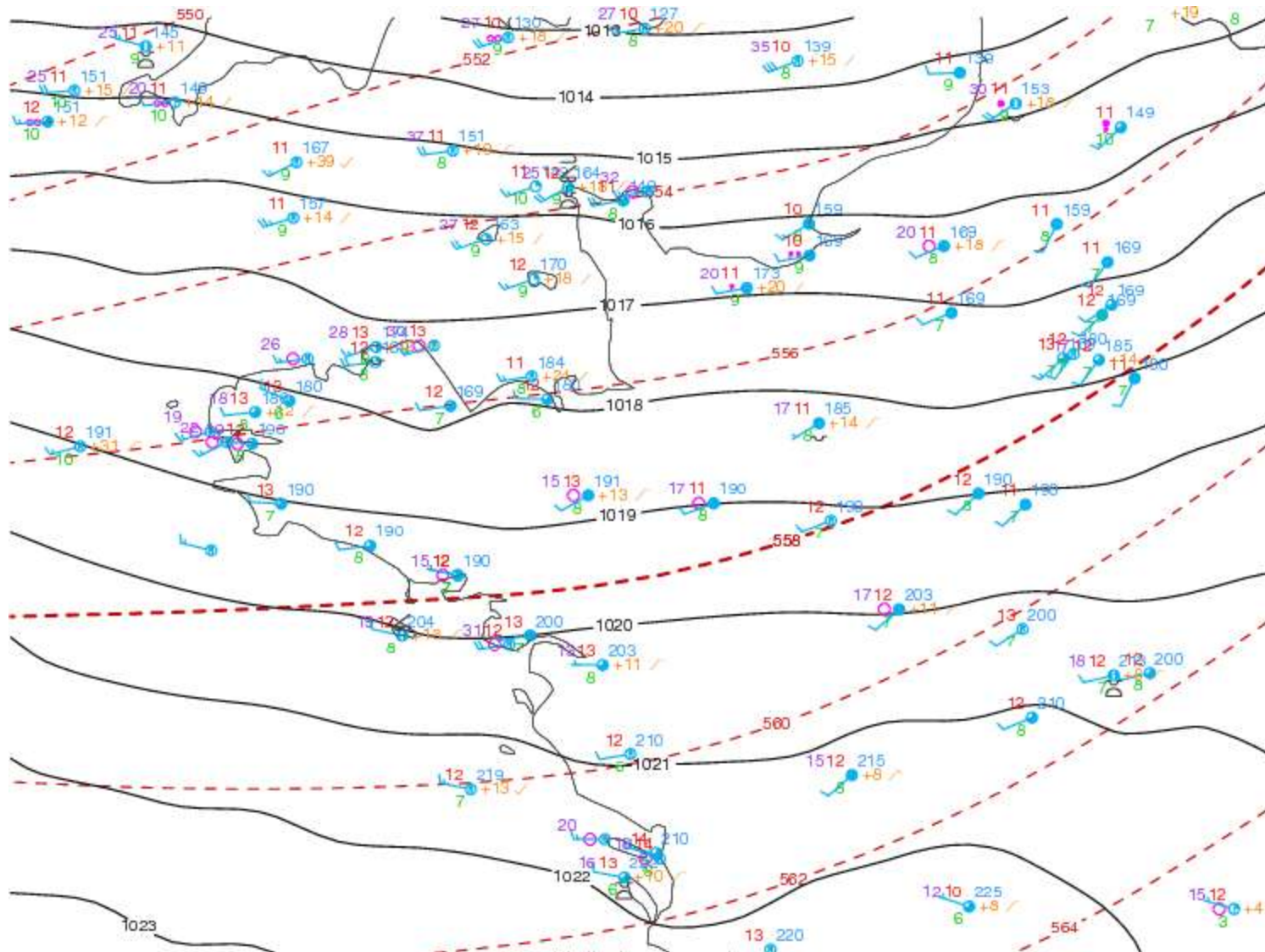
<http://meteocentre.com/>
 Surface plot stc/130510.0500 / upa/130510.00





<http://meteocentre.com/>
 Surface plot sfc/130510.0800 / upa/130510.00





<http://meteocentre.com/>
 Surface plot slc/130510.0900 / upa/130510.00



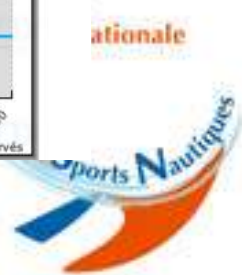
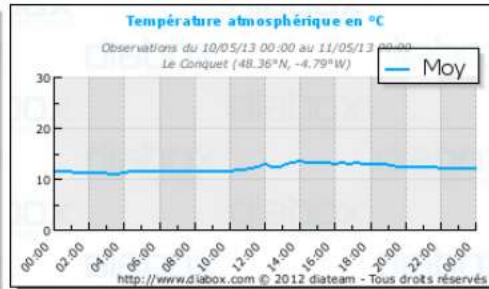


Archives données

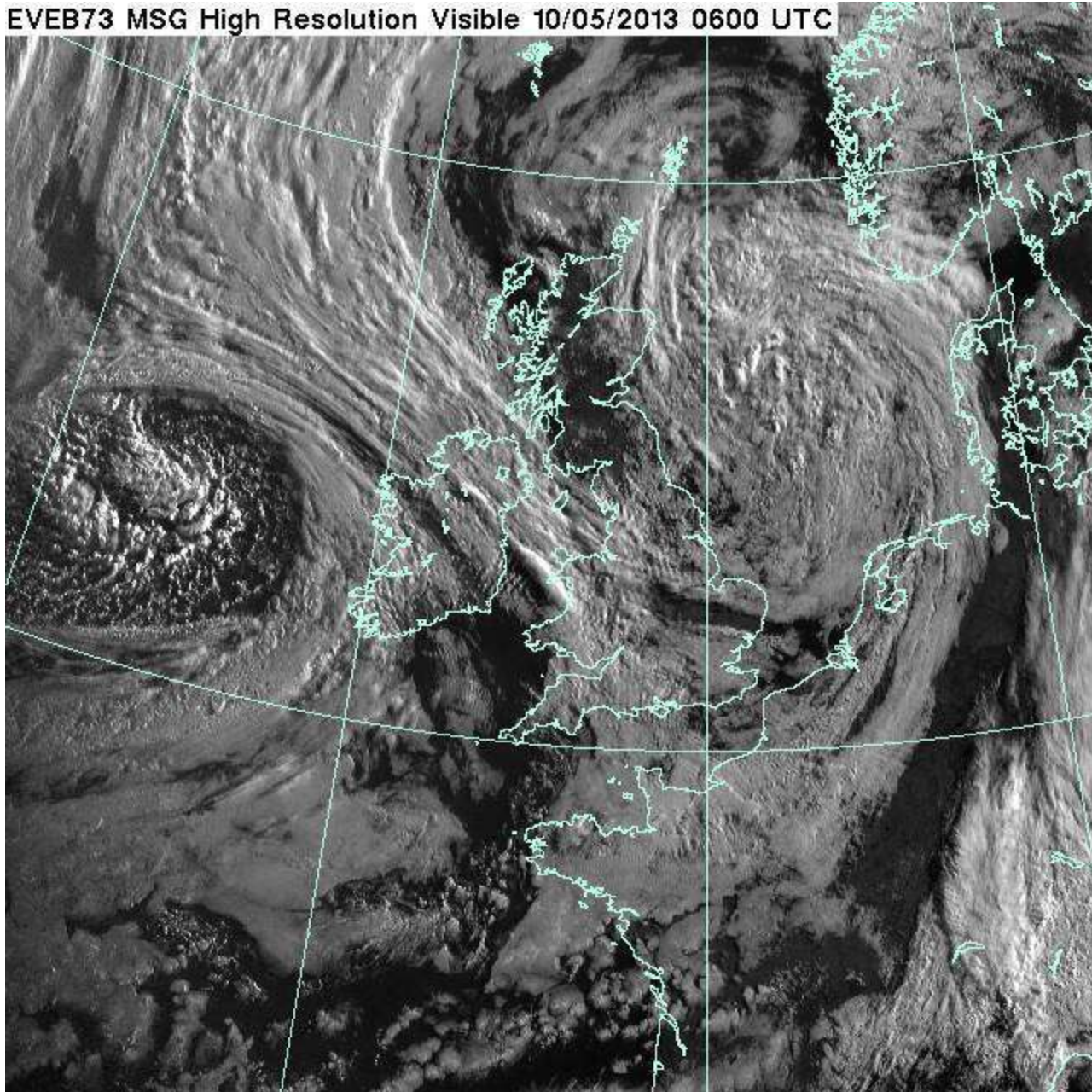
Entrez une date :

Observations du 10/05/13 00:00 au 11/05/13 00:00

Début 2013-05-10 00:00:00 (GMT+0200)	10/05 00h00m	10/05 01h00m	10/05 02h00m	10/05 03h00m	10/05 04h00m	10/05 05h00m	10/05 06h00m	10/05 07h00m	10/05 08h00m	10/05 09h00m	10/05 10h00m	10/05 11h00m	10/05 12h00m	10/05 13h00m	10/05 14h00m	10/05 15h00m	10/05 16h00m	10/05 17h00m	10/05 18h00m	10/05 19h00m	10/05 20h00m	10/05 21h00m	10/05 22h00m	10/05 23h00m	11/05 00h00m
Vent Moyen (nœuds)	18.9	17.7	19	17.4	18	16.2	17.1	16.5	13.9	12.9	12.8	10.8	11.4	12.1	11.1	9.6	10	11.2	11.6	13.7	14.2	15	17.1	17.9	16.1
Rafales (nœuds)	26.2	26.9	24.3	24.3	22.6	21.7	22.6	21.7	19.1	16.5	16.5	14.8	15.6	14.8	13.9	12.2	14.8	13.9	13.9	18.2	18.2	19.1	21.7	26.2	24.3
Echelle de Beaufort (bf)	5	4	5	4	4	4	4	4	4	3	3	3	3	3	3	3	3	3	3	4	4	4	4	4	4
Direction du vent (°N)	→ 260	→ 260	→ 264	→ 272	→ 268	→ 272	→ 283	→ 277	→ 278	→ 271	→ 264	→ 250	→ 246	→ 239	→ 241	→ 246	→ 243	→ 239	→ 235	→ 244	→ 242	→ 236	→ 232	→ 231	→ 262
Température (°C)	11.4	11.2	11.1	11	11.3	11.3	11.3	11.3	11.5	11.5	11.7	12.3	12.5	13.1	13.2	13.1	13	13	12.8	12.4	12.2	12.2	12.1	12	10.9
Pression (hPa)	1011	1011	1012	1012	1012	1012	1012	1012	1013	1014	1014	1014	1014	1014	1015	1014	1014	1014	1014	1014	1013	1013	1013	1013	1013
Humidité relative (%)	83.9	85.3	84.9	86	82.1	80.8	81	83.1	83.5	84	84.9	85.1	85.5	86.1	86	86.3	87	87.7	88.1	89	90	90	89.8	90	91
Images																									
Intensité des précipitations (mm/h)	0	0	0	0	0	0	0	0	0	0	0	0	0	0	0	0	0	0	0	0	0	0	0	0	0.4



EVEB73 MSG High Resolution Visible 10/05/2013 0600 UTC



Scénario(s) prévu(s) pour VENDREDI 10 MAI

Ciel: couvert ce matin, éclaircies avec qqes averses cet aprem

Vent: 0 à OSO, 12-18nds, légèrement moins fort à la mi-journée

Mer: belle

Températures : mini 10°/maxi 15°

Température de l'eau : 13°

Courant: BM 12H03 – **PM 17H48**

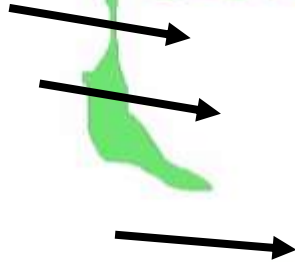
COEF 84

Soleil : Lever 6H44 - Coucher 21H32



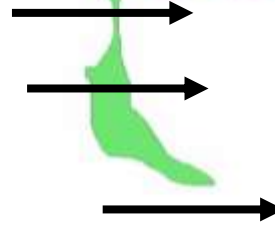
Scénario(s) pour VENDREDI 10 MAI

15/18KT
275/285



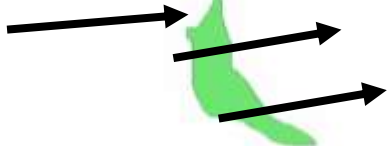
à 8H00

12/15KT
265/275



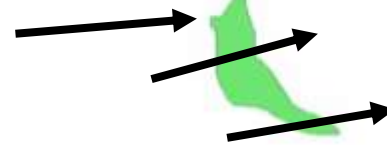
à 11H00

11/15KT
250/260



à 14H00

12/17KT
245/270



à 17H00

ale

