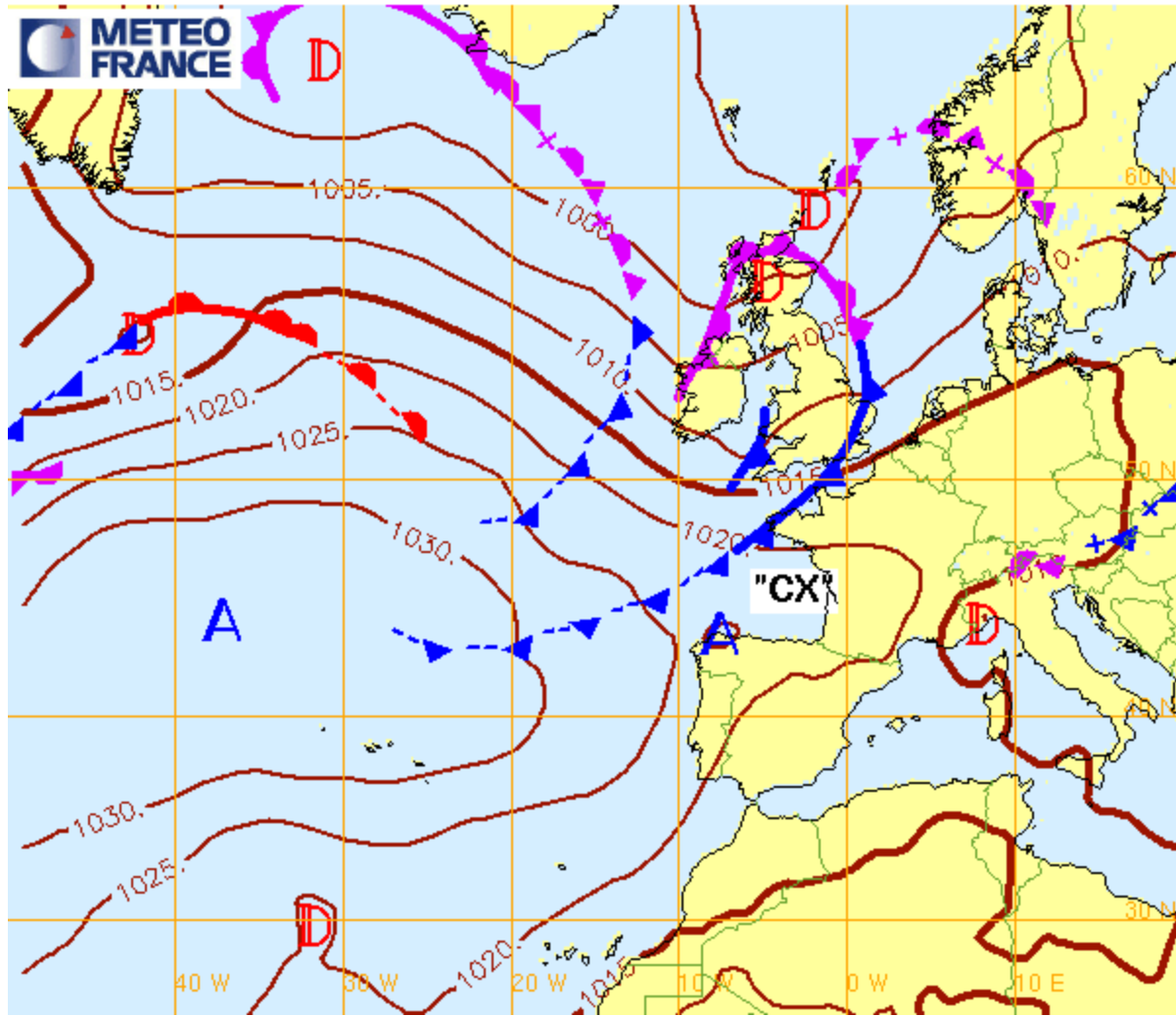


Curseur

Latitude 47°30.5034 N
Longitude 003°07.9422 O
Profondeur -0.00 m
Altitude 0 + V
Distance 0.000 Mn
TTC N/D

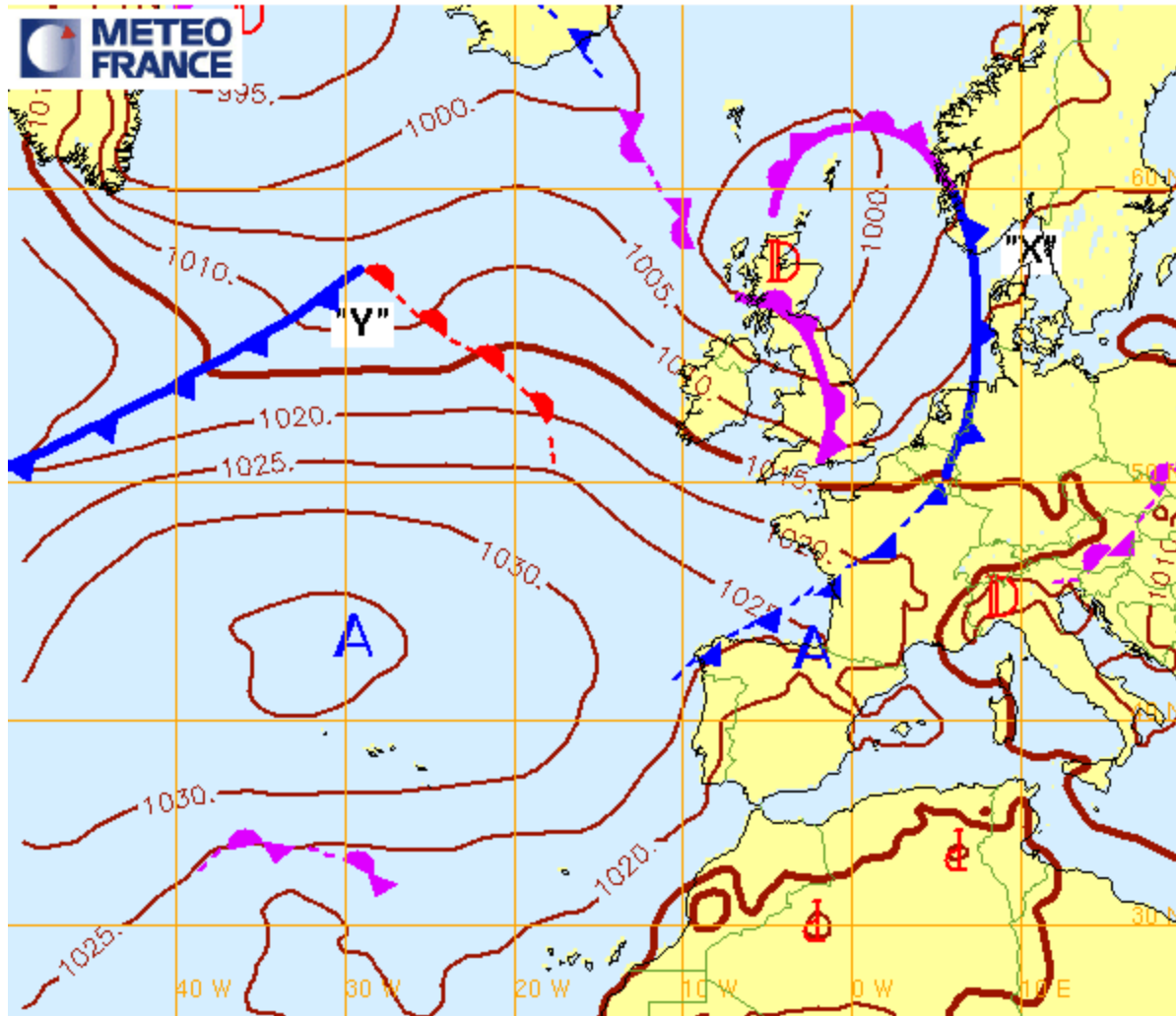
SAMEDI 11 MAI 2HLOC

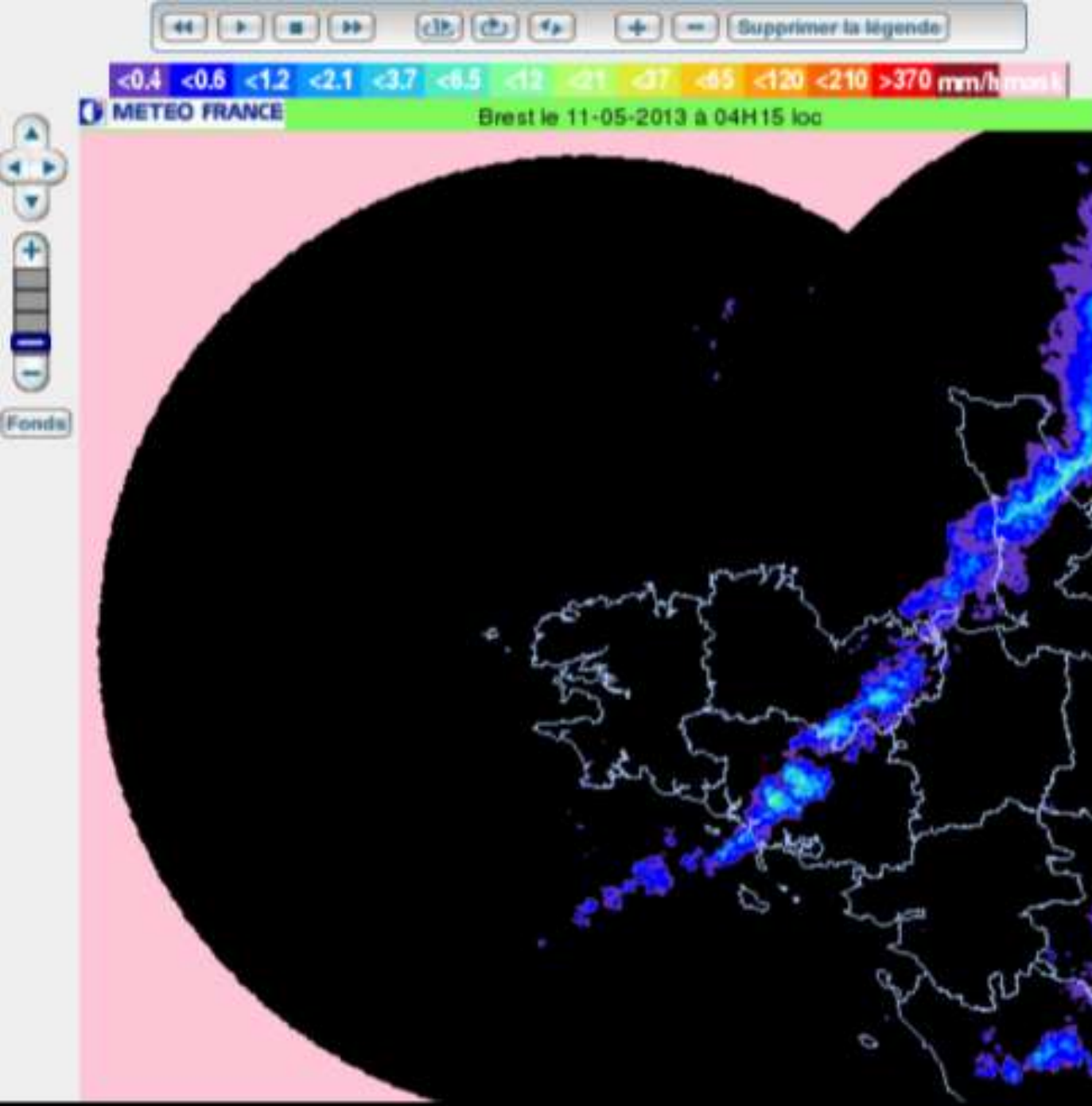
Analyse Fronts et isobares du 11/05/2013 00hUTC (reseau: 11/05/2013 00hUTC)



SAMEDI 11 MAI 14HLOC

Analyse Fronts et isobares du 11/05/2013 12hUTC (reseau: 11/05/2013 12hUTC)

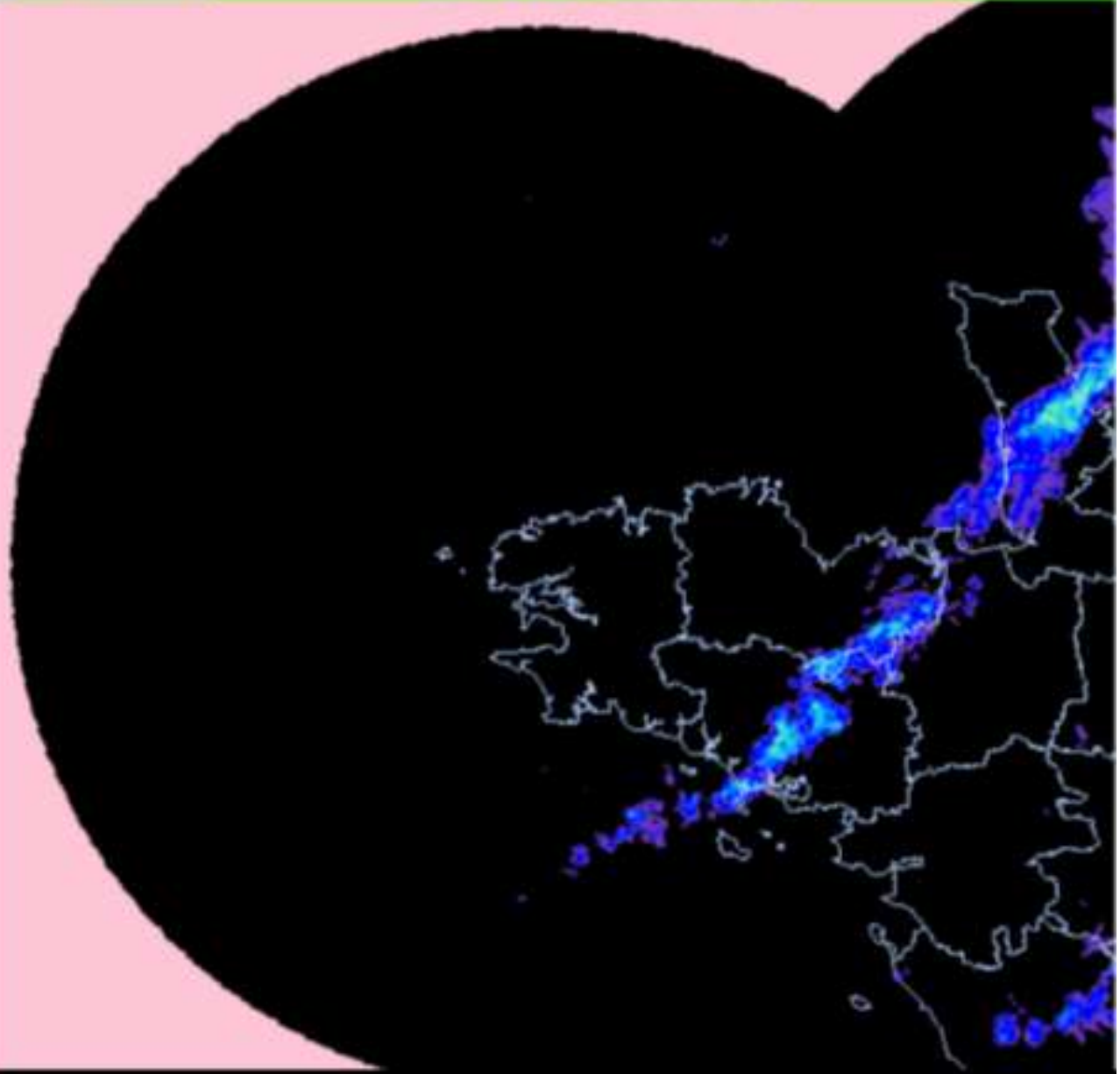




Legend for precipitation intensity in mm/h: <0.4, <0.8, <1.2, <2.1, <3.7, <6.5, <12, <21, <37, <65, <120, <210, >370 mm/h

METEO FRANCE Brest le 11-05-2013 à 04H30 loc

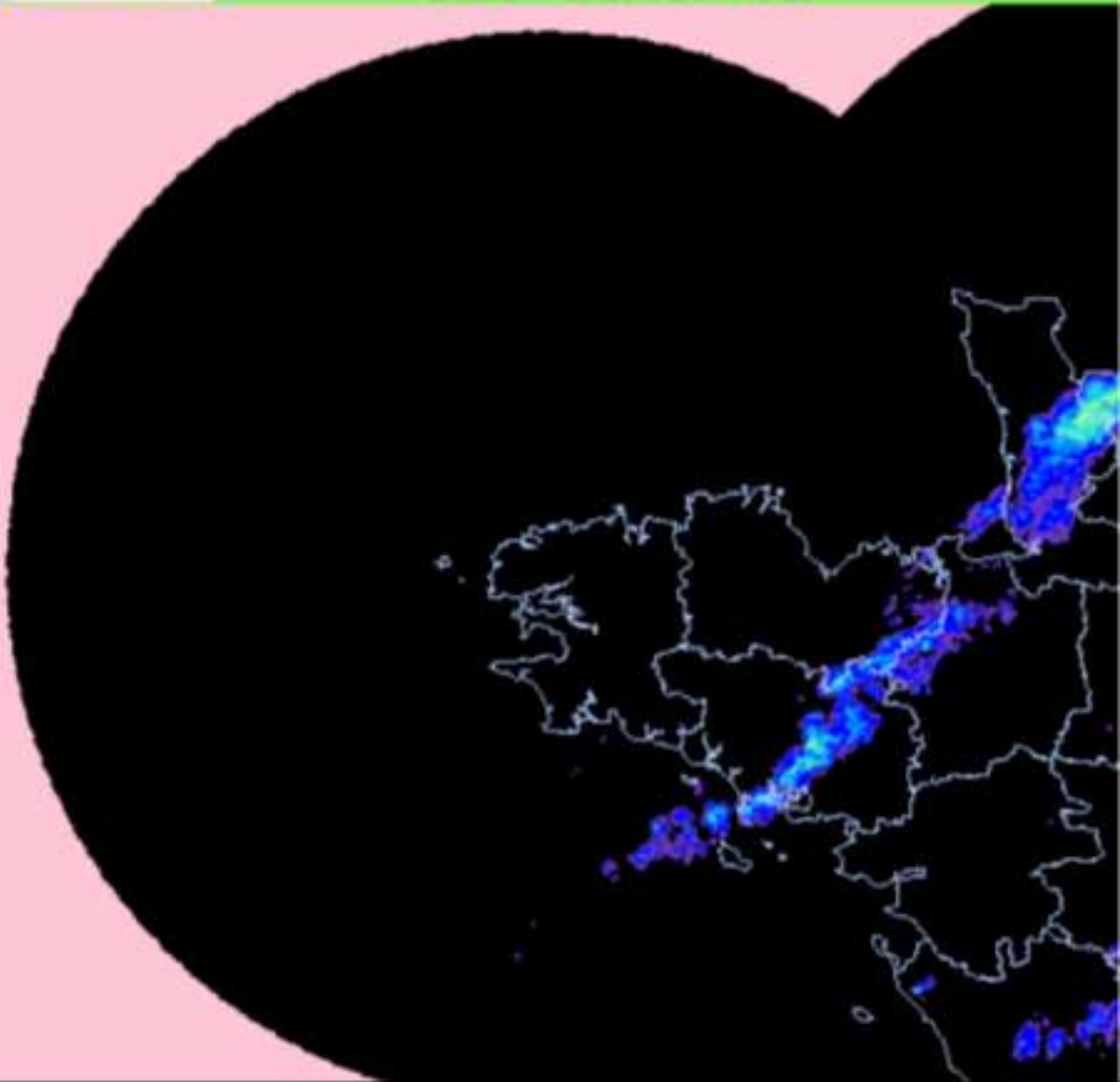
Navigation controls: directional arrows, zoom in (+) and zoom out (-) buttons, and a "Fonds" button.



Legend for precipitation intensity in mm/h: <0.4, <0.6, <1.2, <2.1, <3.7, <6.5, <12, <21, <37, <65, <120, <210, >370 mm/h max.

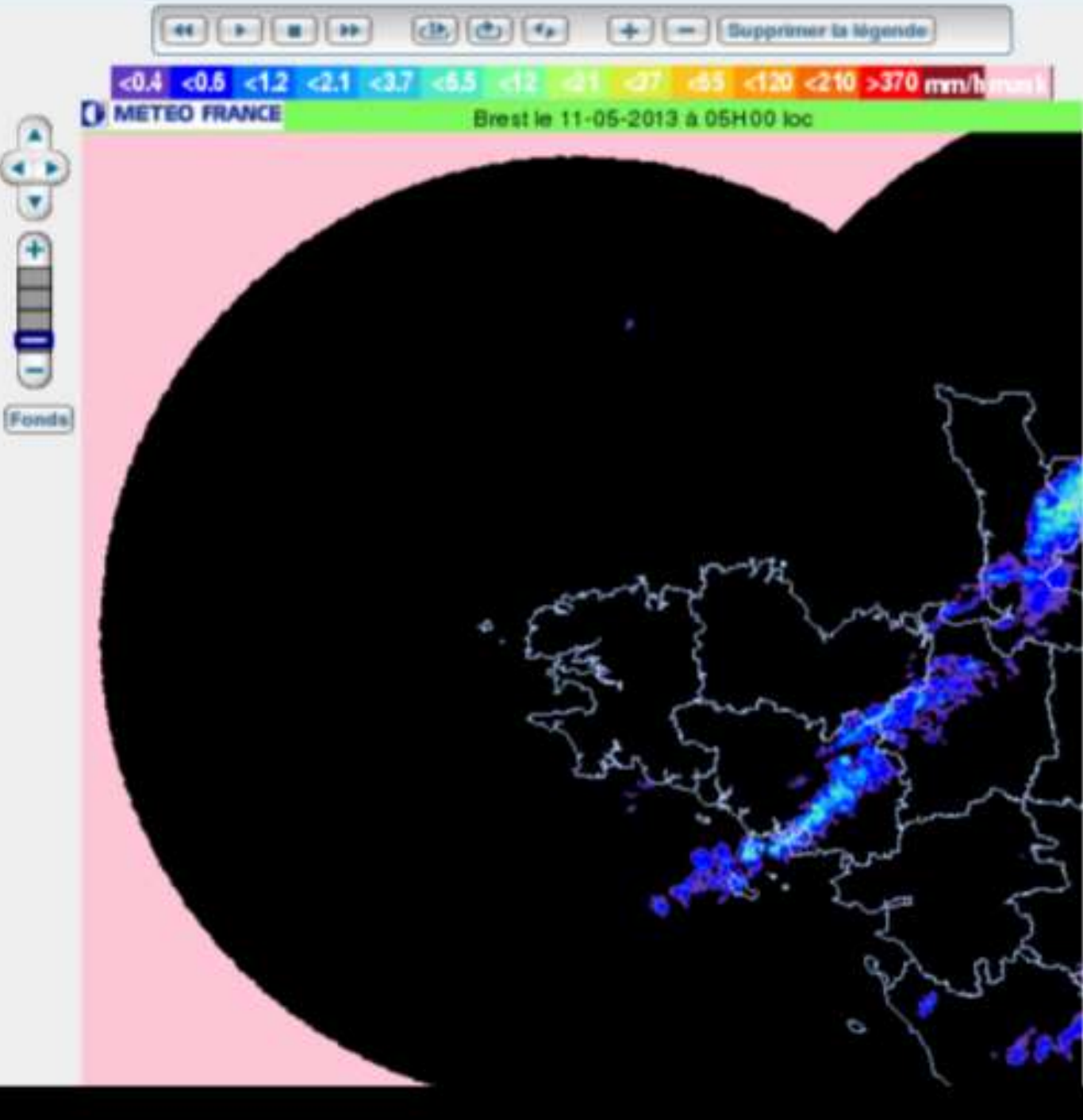
METEO FRANCE

Brest le 11-05-2013 à 04H45 loc



Fonds





Navigation and control buttons: back, forward, home, search, refresh, zoom in, zoom out, and a button labeled "Supprimer la légende".

Temperature scale: -31, -28, -25, -22, -19, -16, -13, -10, -7, -4, -1, +2, +5, +8, +11, +14, +17, +20, +23, +26, +29, +32.

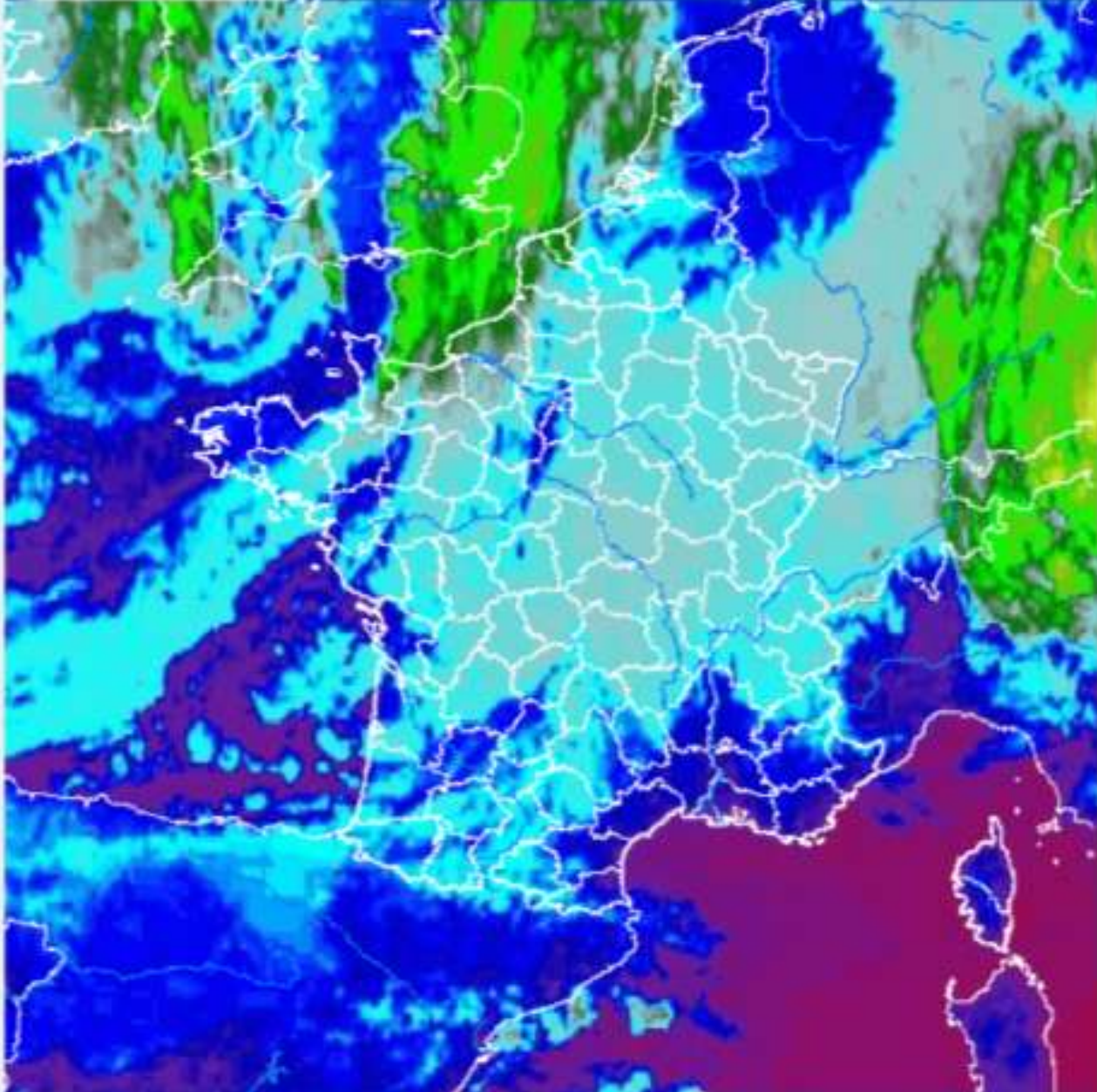
METEO FRANCE 11/05/13 04h15 légales



Navigation and zoom controls: directional arrows, zoom in (+), zoom out (-), and a button labeled "Fonds".

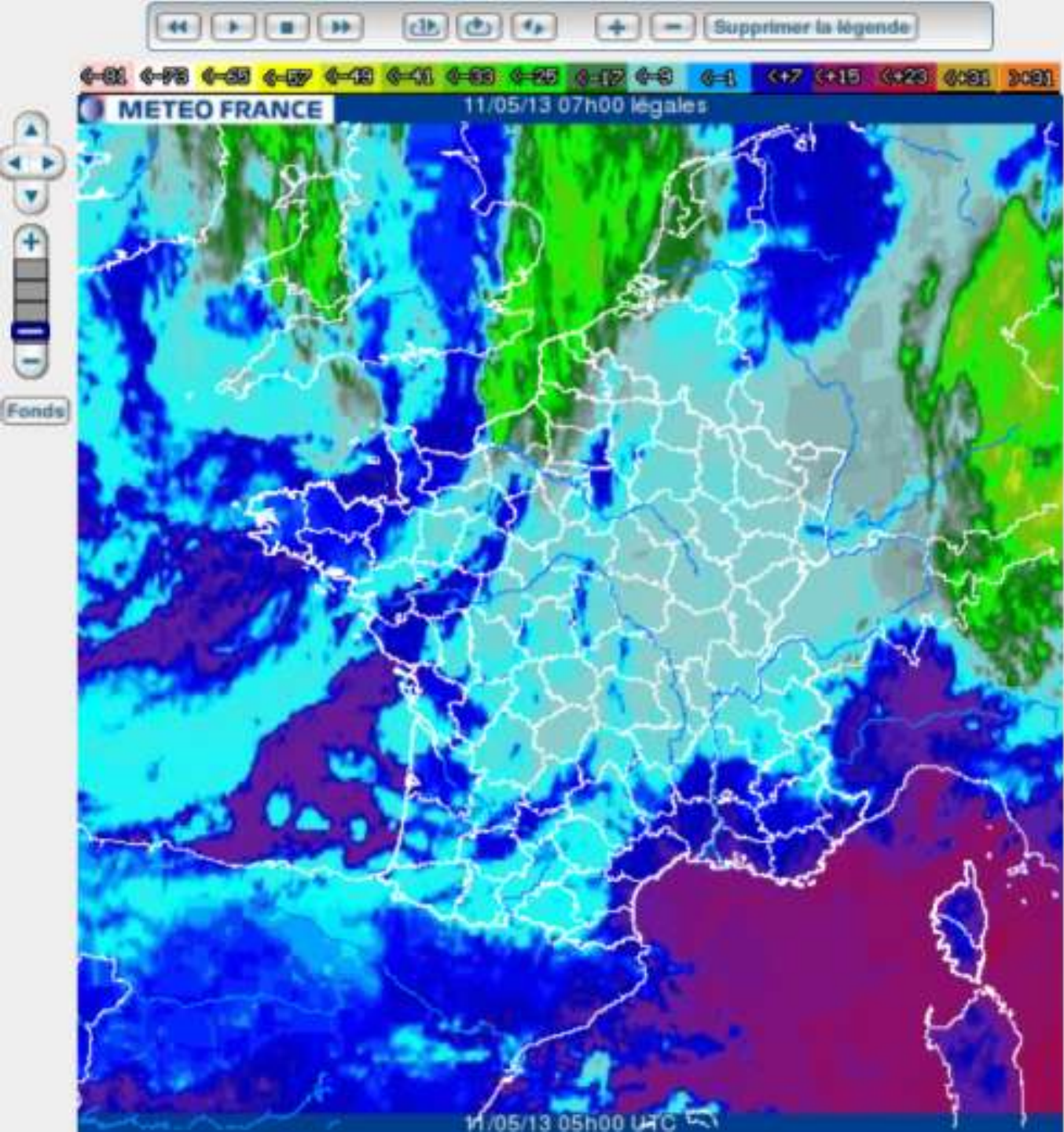
11/05/13 02h15 UTC





Vertical navigation controls: directional arrows (up, down, left, right), a zoom in (+) button, a zoom out (-) button, and a button labeled "Fonds".



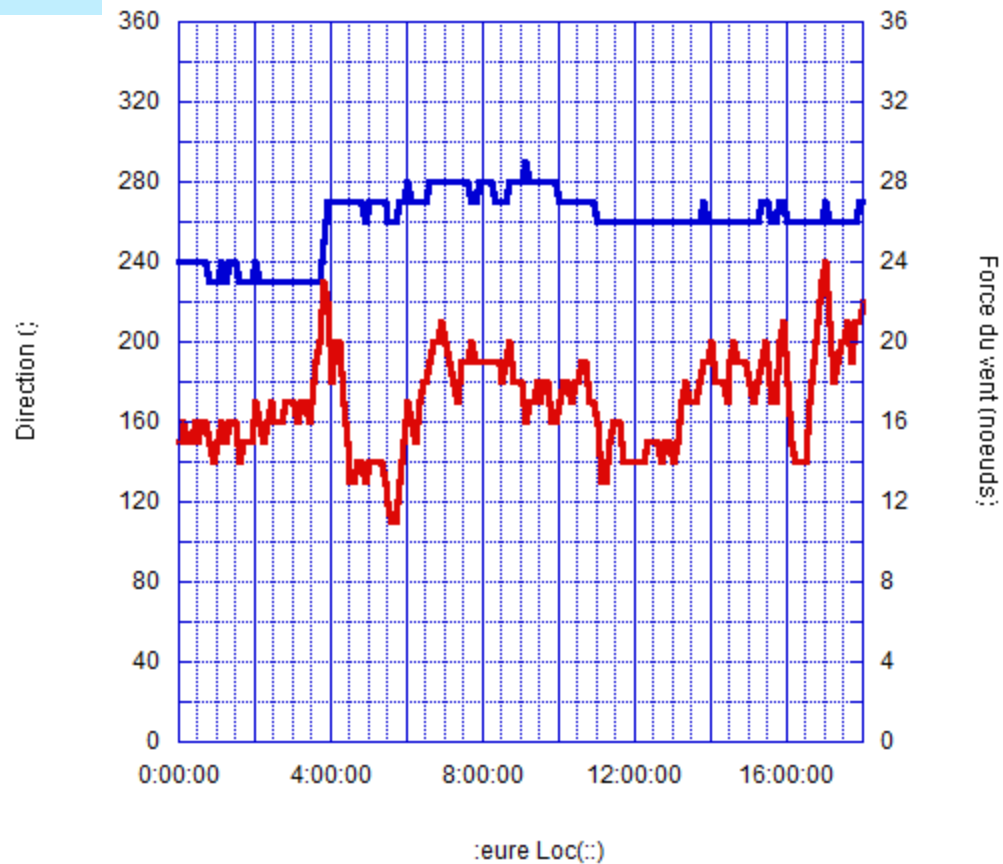




Direction (°)

Force du vent (noeuds)

2013 05 11 GROIX



Direction (°)

Force du vent (noeuds)

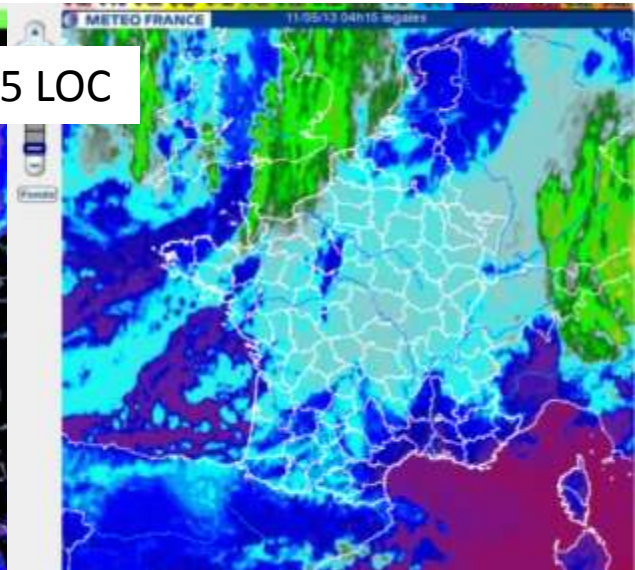
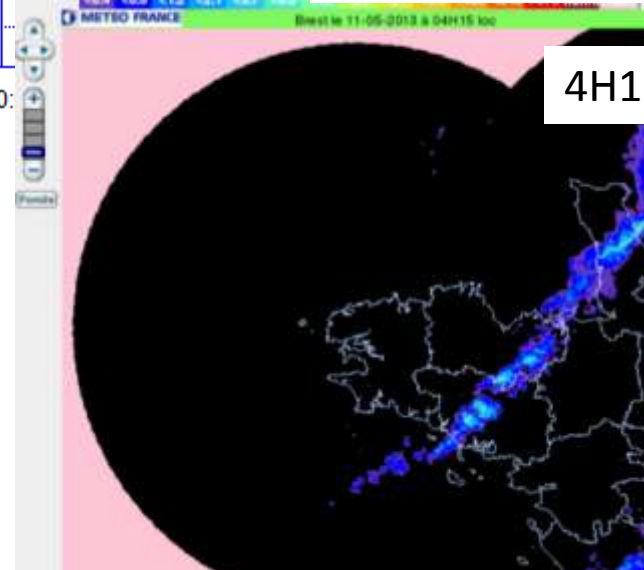
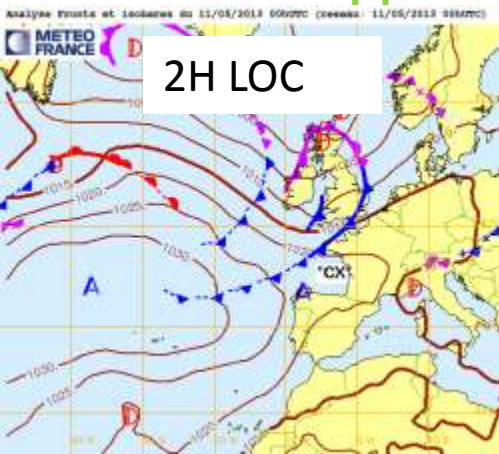
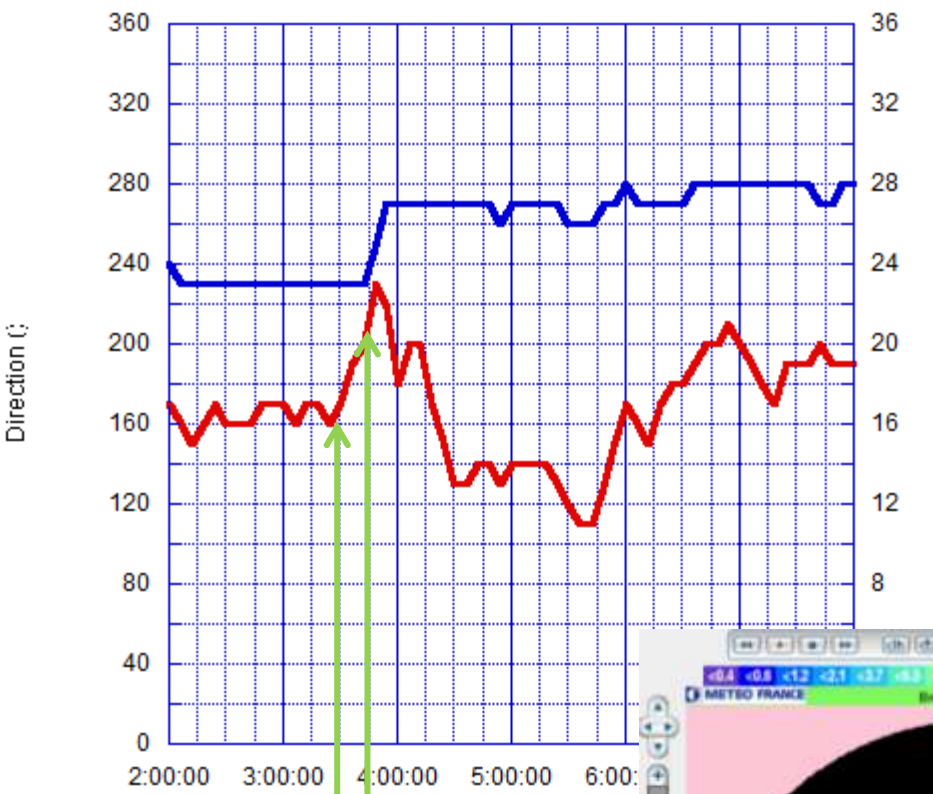
Passage du front froid vers 4H à Groix:

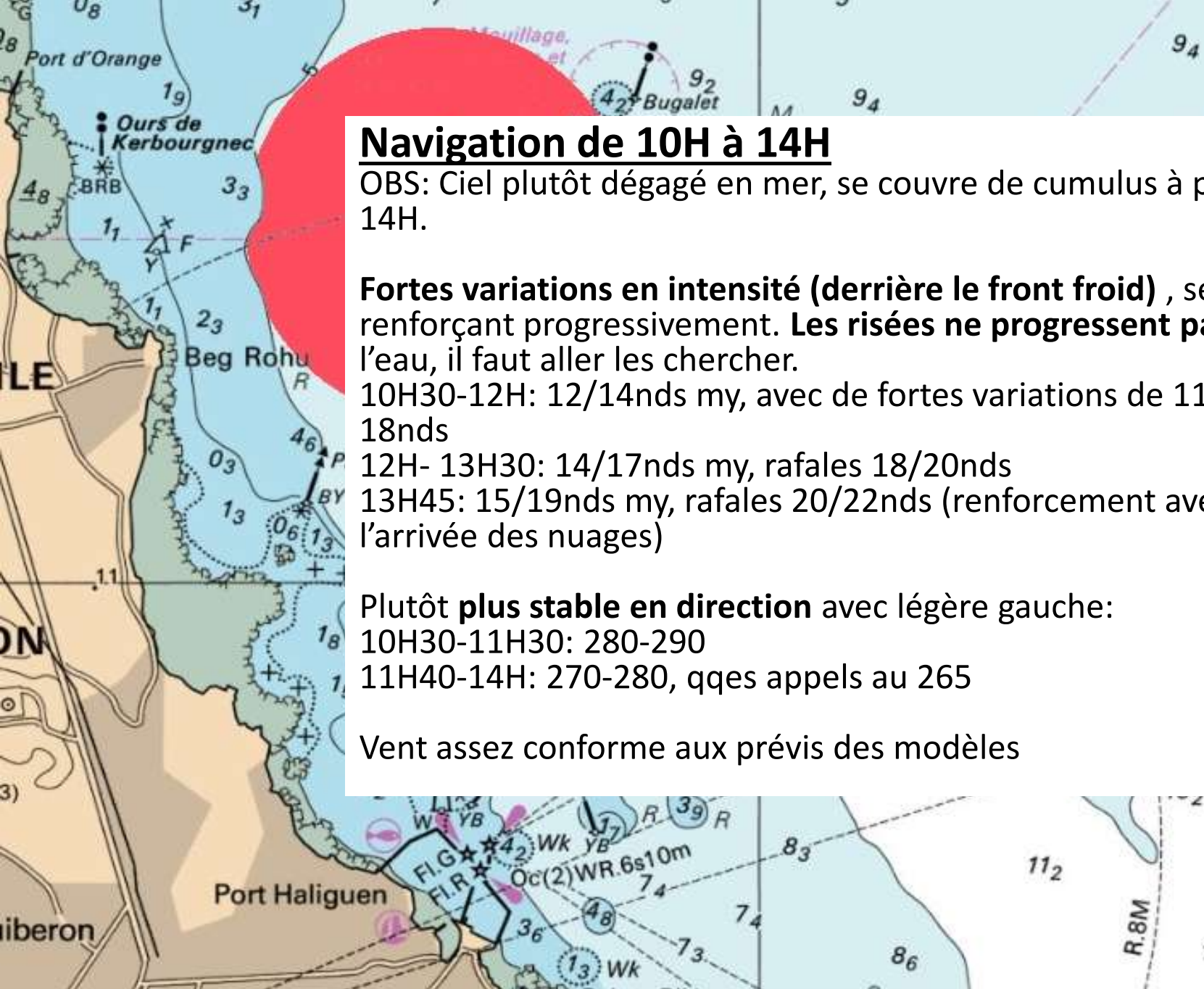
3H30: le vent commence à forcer (16/17nds → 20/24nds)
 3H45: pointe à 20/24nds (soit +6nds), début de la droite
 4H00: le vent a pris 40° de droite en 10mn (230→270). Fin de la pluie mais tjrs nuageux. Le ciel ne s'éclaircit qu'à partir de 6/7H. Le vent mollit après la pluie en deçà de sa valeur avant le front (→12/14nds de 4H30à 5H45)

⇒ On a successivement:

1. **renforcement du vent sous la pluie** (qui dure 20/30mn)
2. **forte droite à la fin de la pluie à un ciel qui reste nuageux**
3. Le vent mollit pdt 2 pttes heures après la pluie et le front, et avant un nouveau renforcement avec les isobares qui se resserrent.

2013 05 11 GROIX





Navigation de 10H à 14H

OBS: Ciel plutôt dégagé en mer, se couvre de cumulus à partir de 14H.

Fortes variations en intensité (derrière le front froid), se renforçant progressivement. **Les risées ne progressent pas** sur l'eau, il faut aller les chercher.

10H30-12H: 12/14nds my, avec de fortes variations de 11 à 18nds

12H- 13H30: 14/17nds my, rafales 18/20nds

13H45: 15/19nds my, rafales 20/22nds (renforcement avec l'arrivée des nuages)

Plutôt **plus stable en direction** avec légère gauche:

10H30-11H30: 280-290

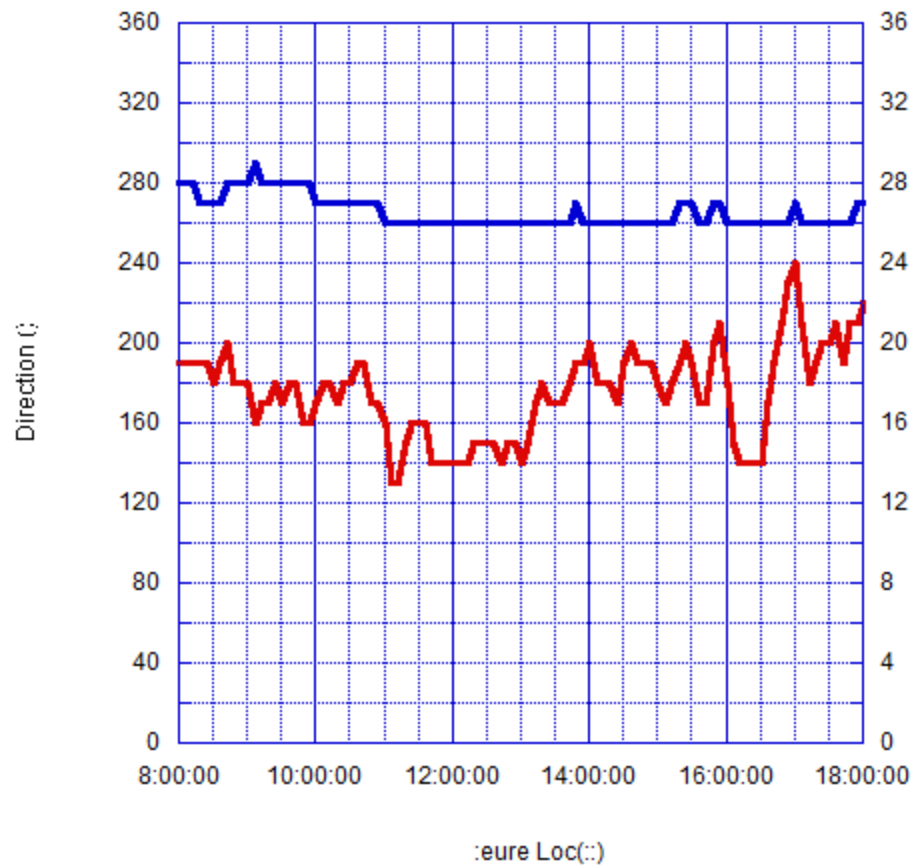
11H40-14H: 270-280, qqes appels au 265

Vent assez conforme aux prévis des modèles

Direction (°)

Force du vent (noeuds)

2013 05 11 GROIX

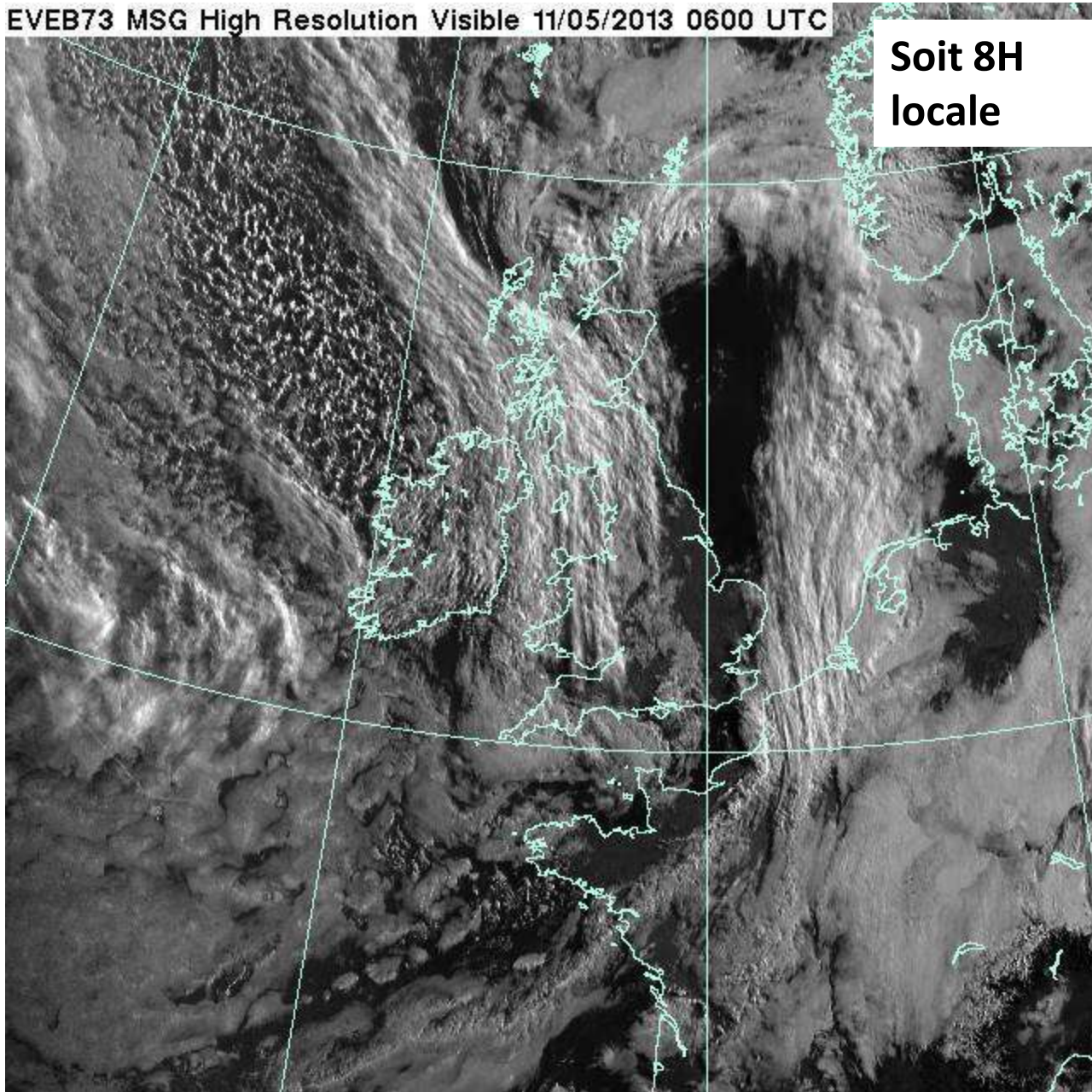


Force du vent (noeuds):



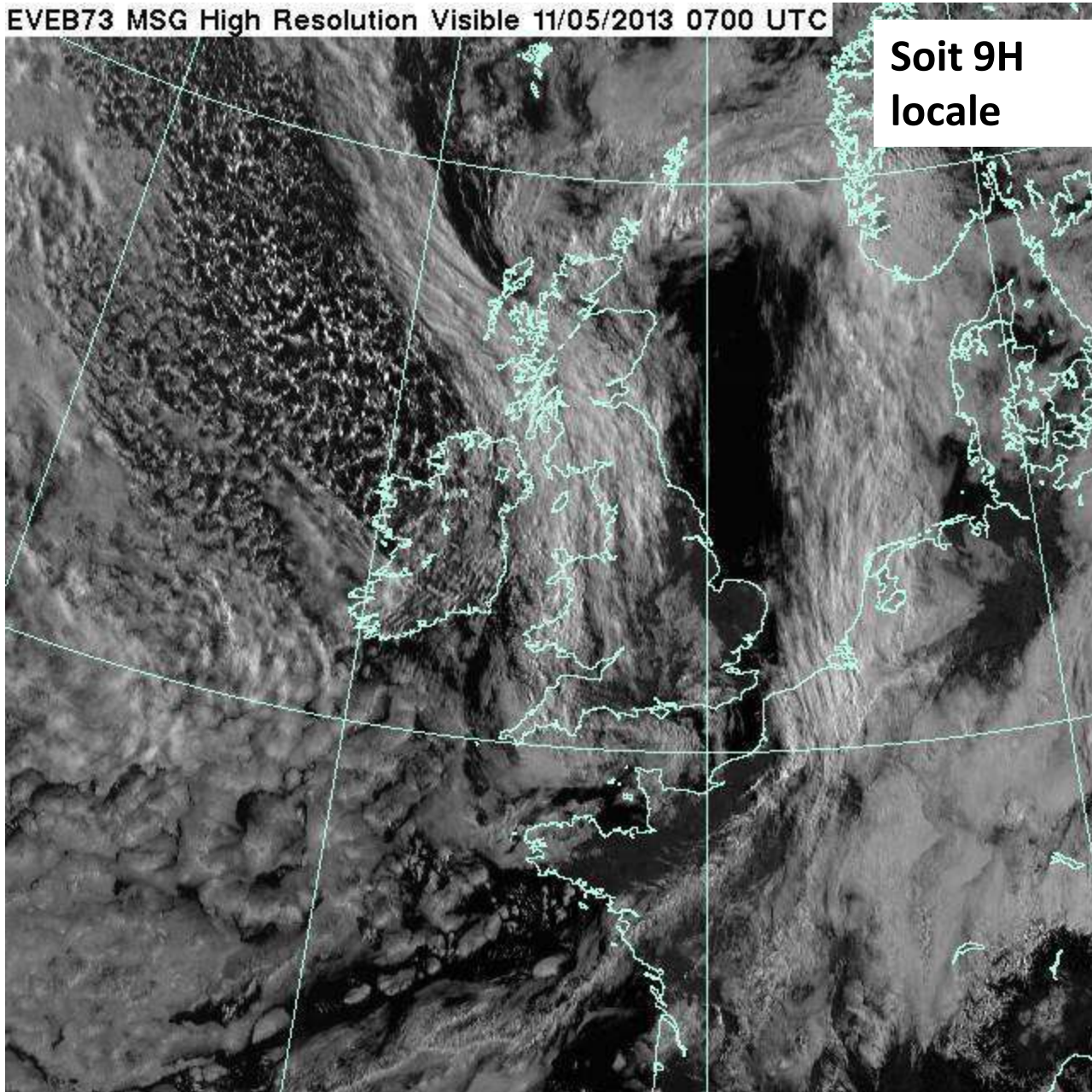
EVEB73 MSG High Resolution Visible 11/05/2013 0600 UTC

Soit 8H
locale

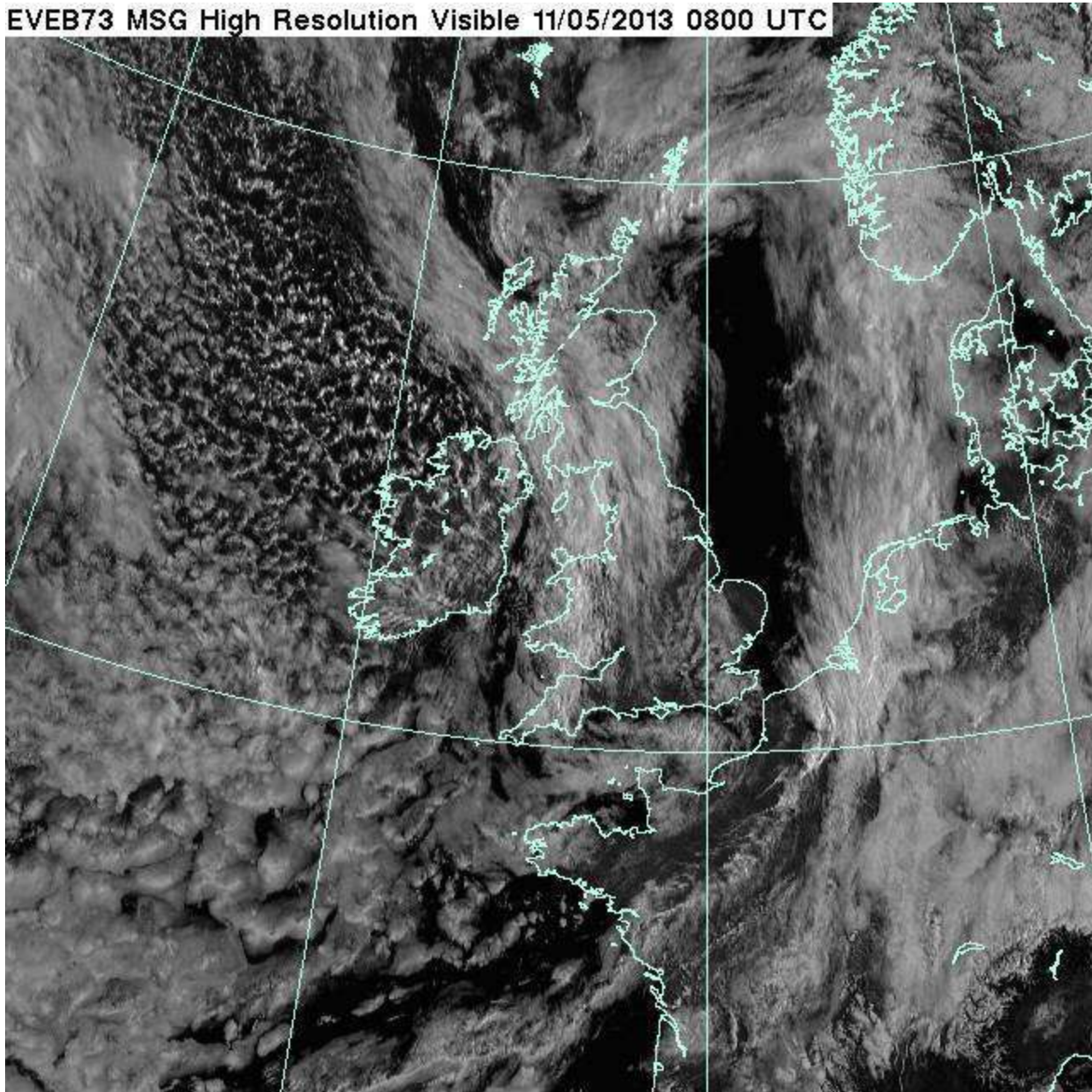


EVEB73 MSG High Resolution Visible 11/05/2013 0700 UTC

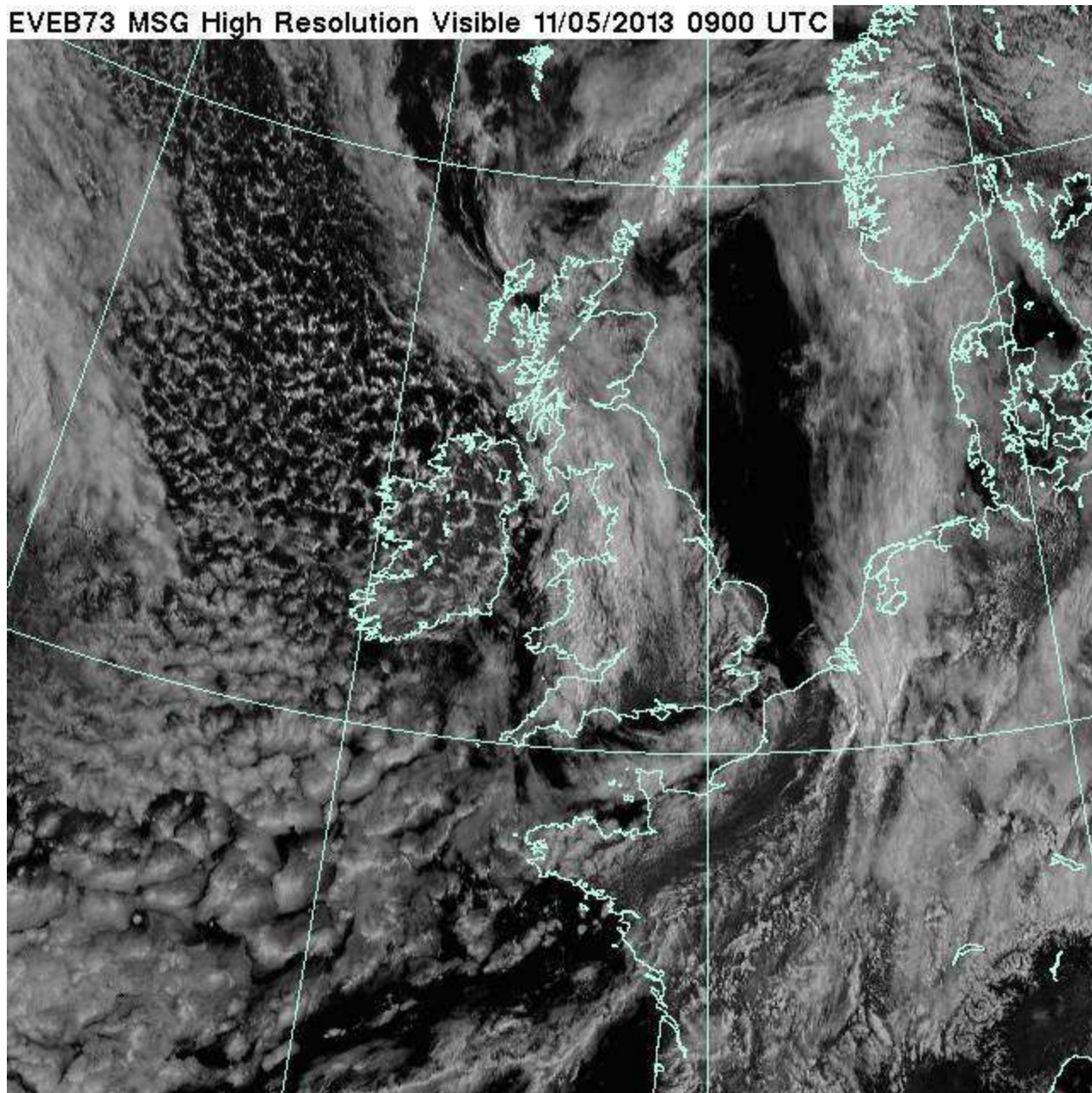
Soit 9H
locale



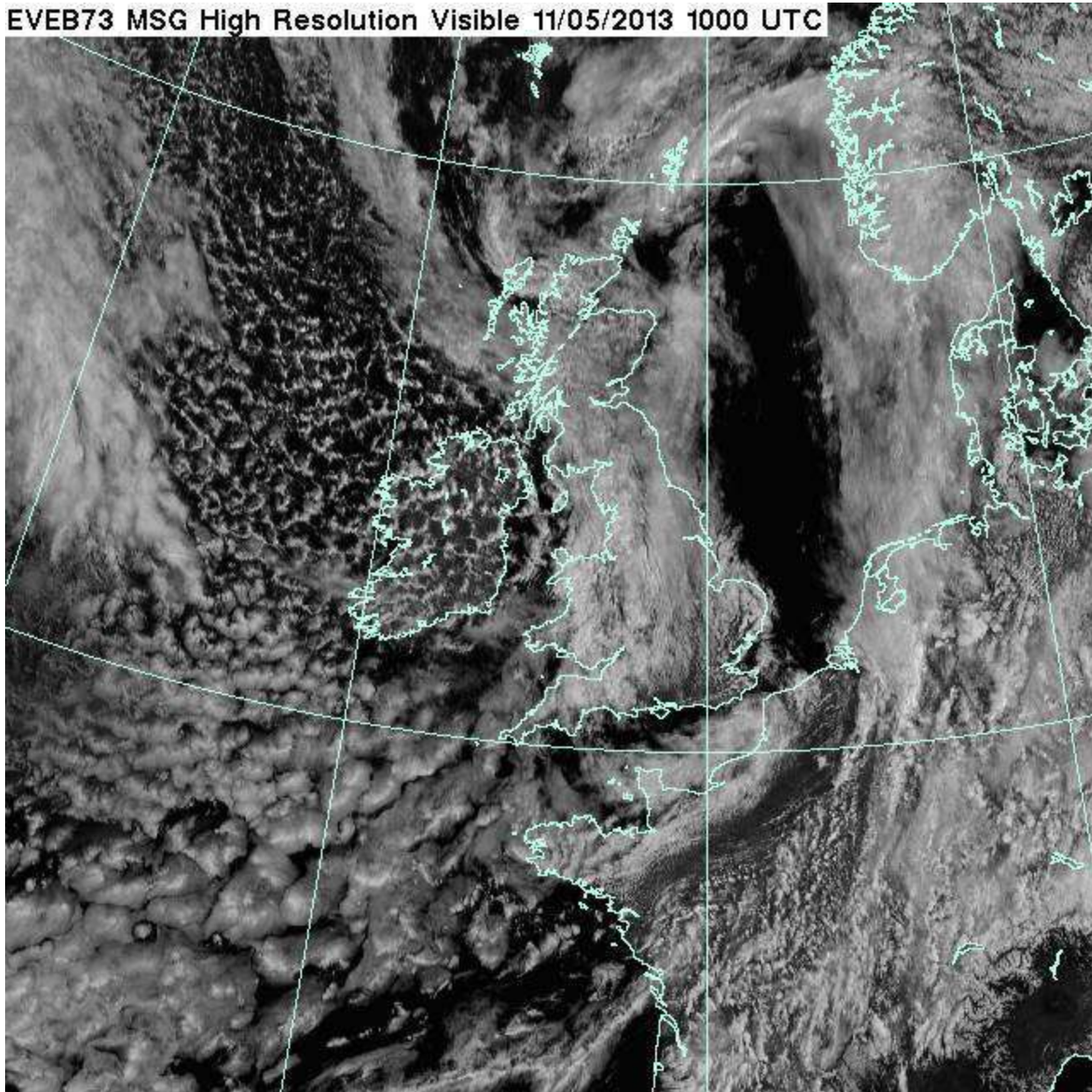
EVEB73 MSG High Resolution Visible 11/05/2013 0800 UTC



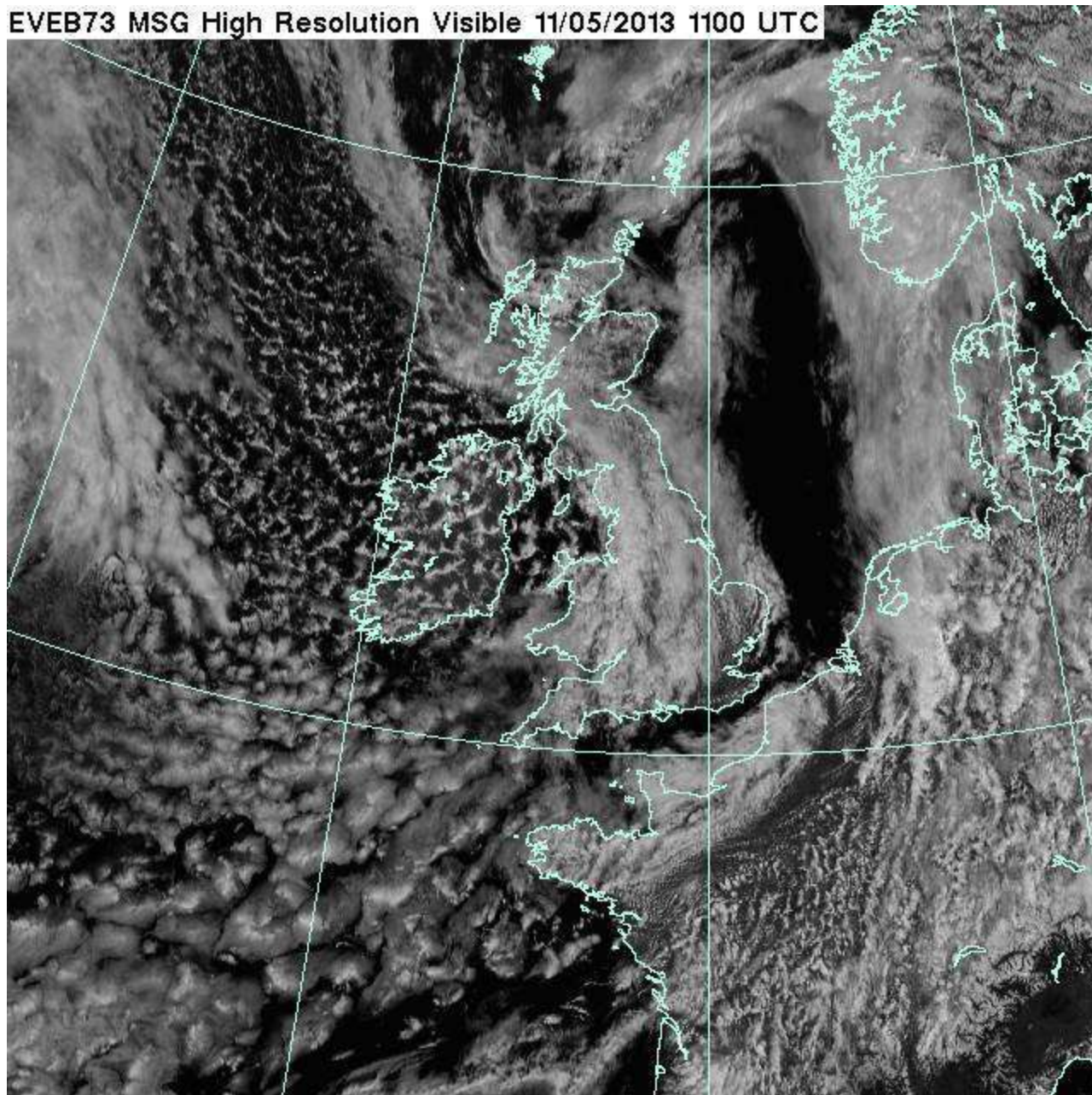
EVEB73 MSG High Resolution Visible 11/05/2013 0900 UTC



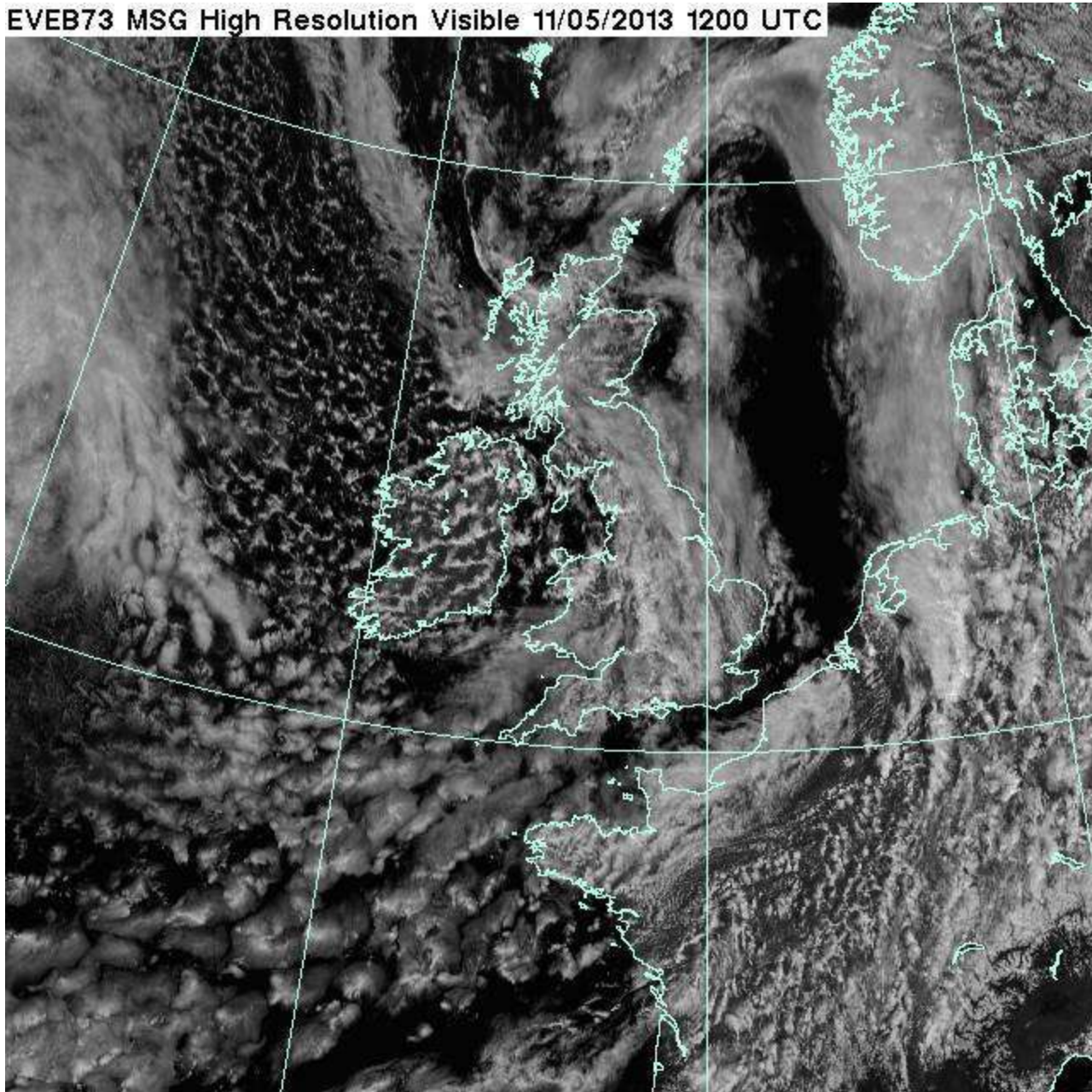
EVEB73 MSG High Resolution Visible 11/05/2013 1000 UTC



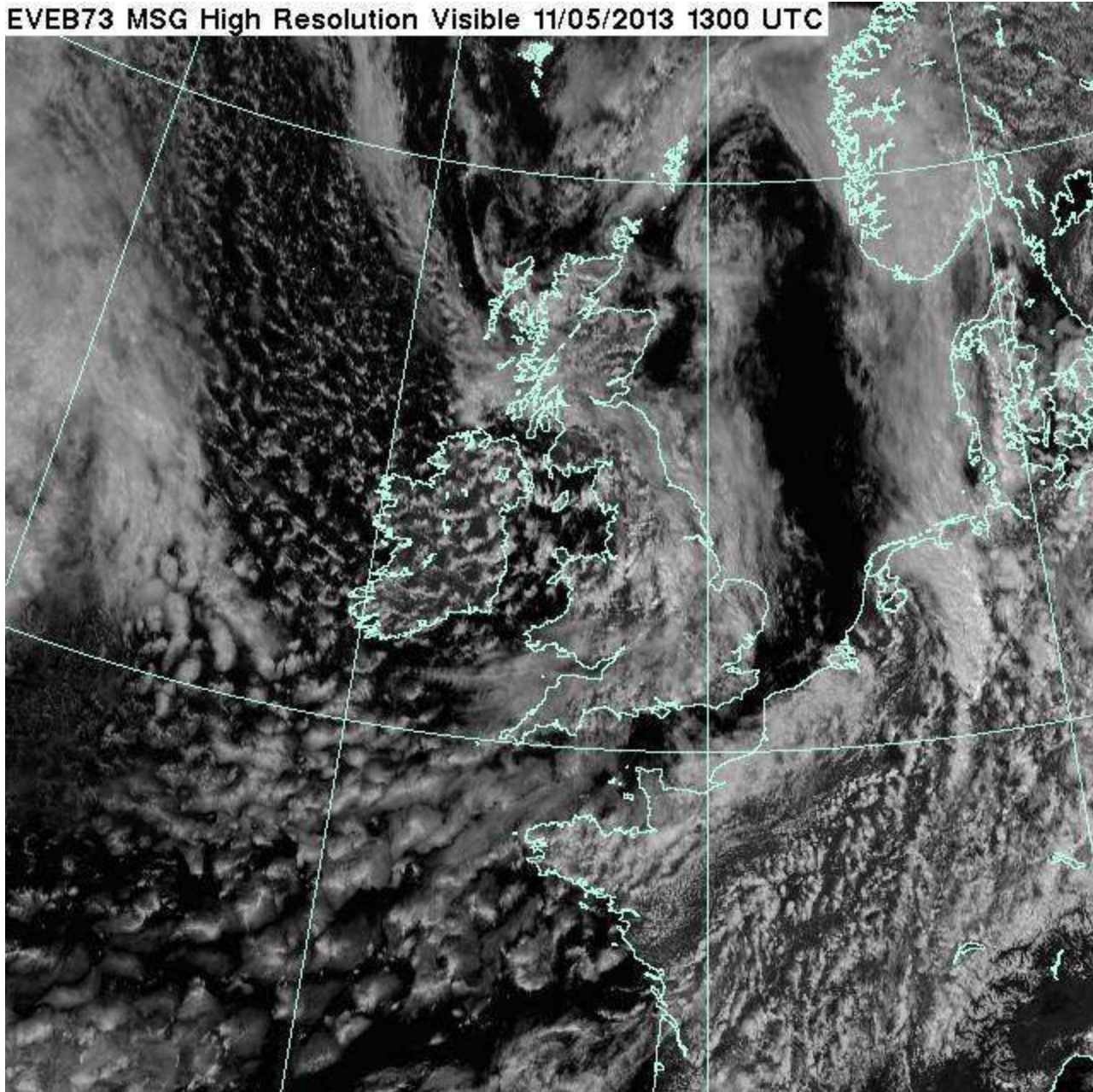
EVEB73 MSG High Resolution Visible 11/05/2013 1100 UTC



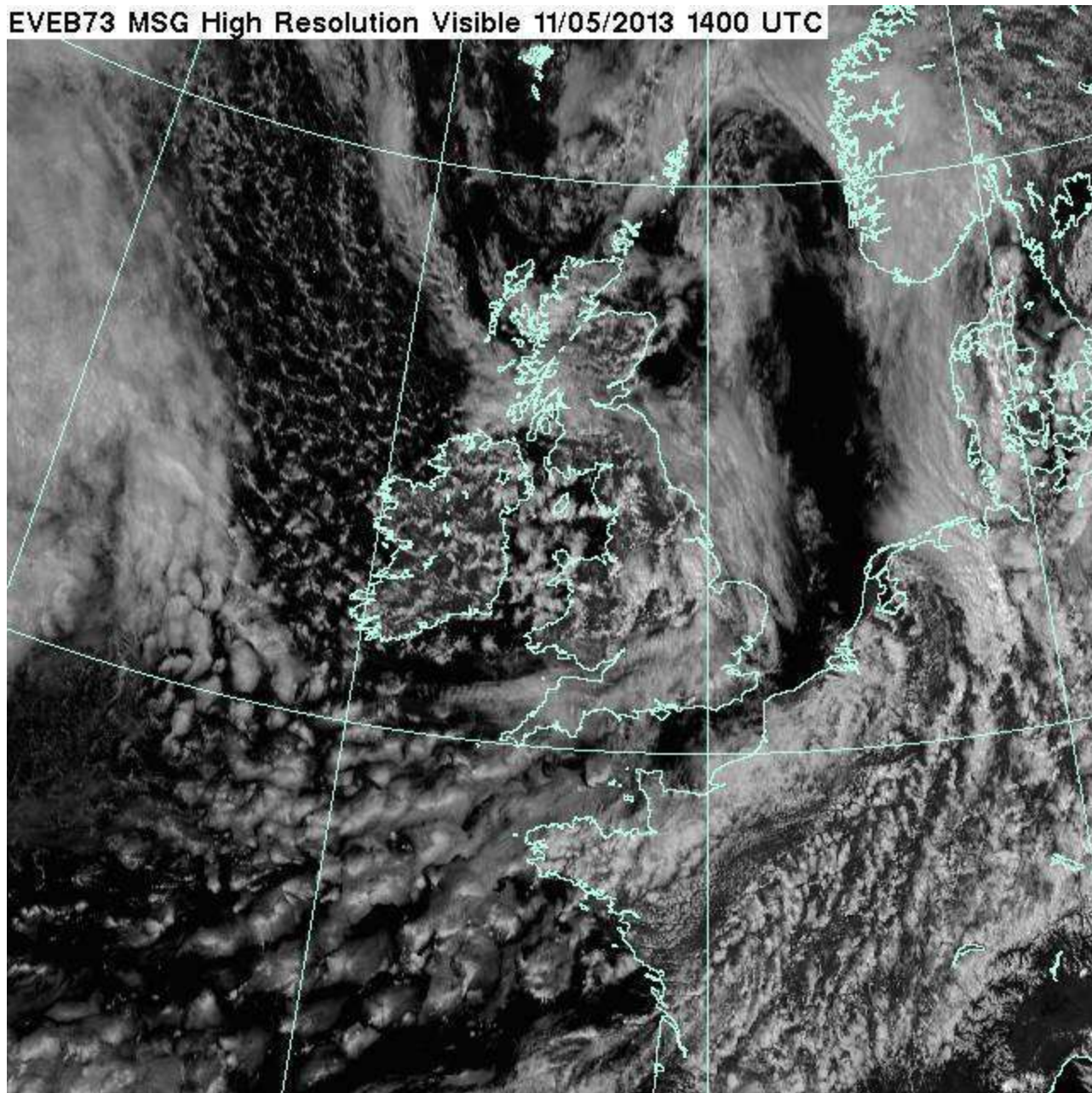
EVEB73 MSG High Resolution Visible 11/05/2013 1200 UTC



EVEB73 MSG High Resolution Visible 11/05/2013 1300 UTC



EVEB73 MSG High Resolution Visible 11/05/2013 1400 UTC



10H50 LOC



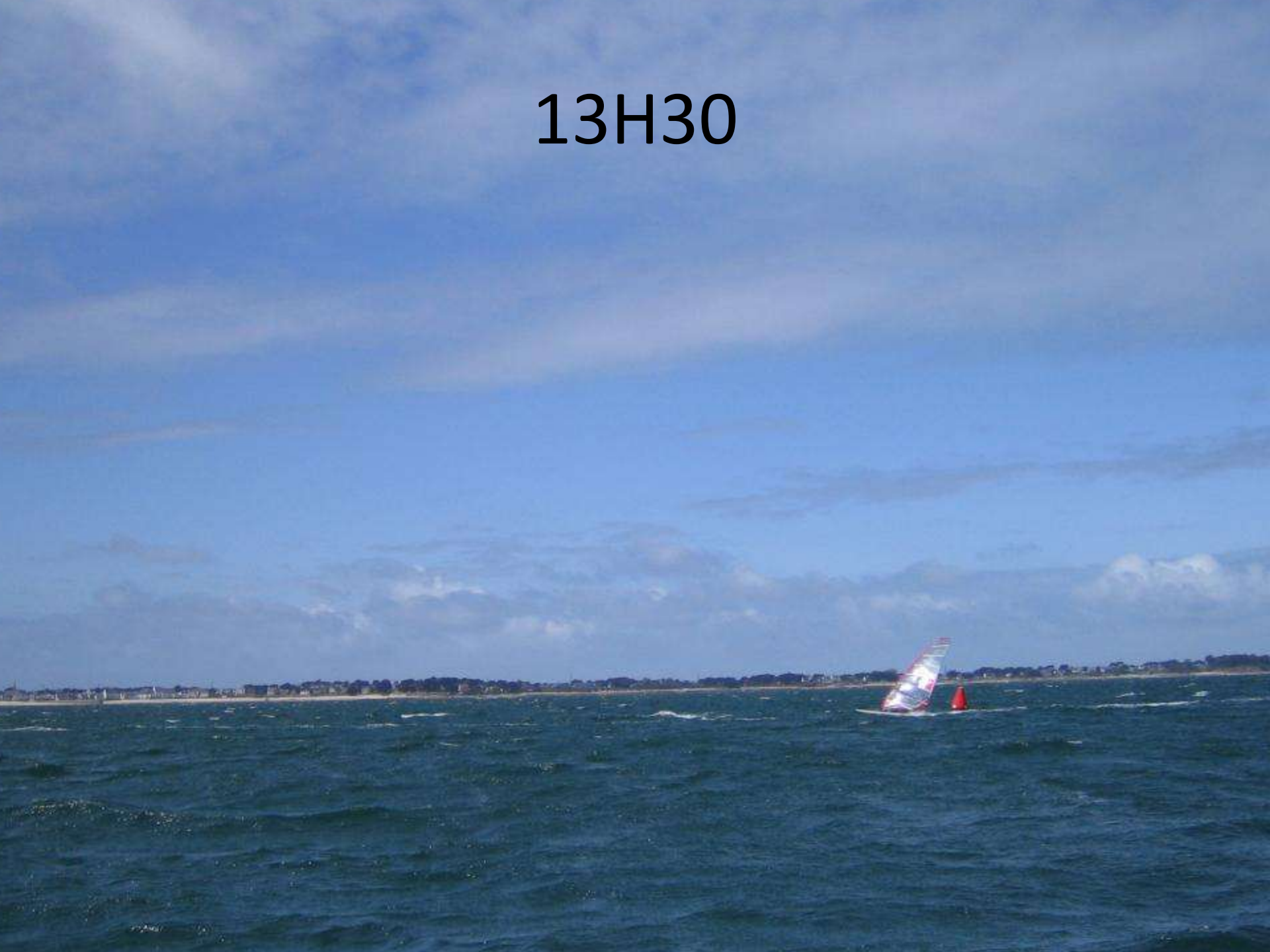
11H



12H



13H30



14H10



Scénario(s) prévu(s) pour SAMEDI 11 MAI

Ciel: belles éclaircies ce matin, nuageux cet aprem avec qqes averses possibles

Vent: Ouest, 13-16nds ce matin, forcissant 15-19nds cet aprem

Mer: belle

Températures : mini 10°/maxi 14°

Température de l'eau : 12/13°

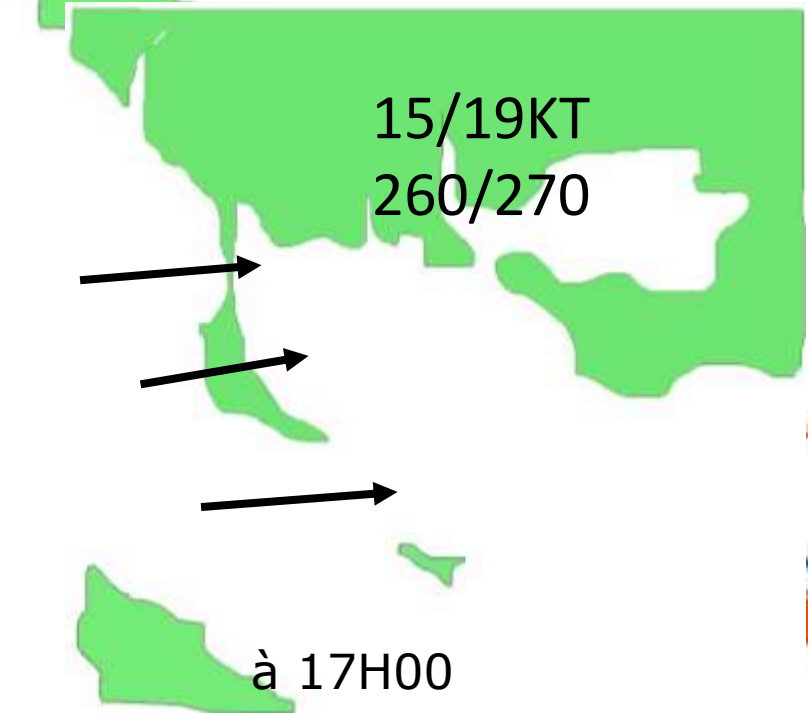
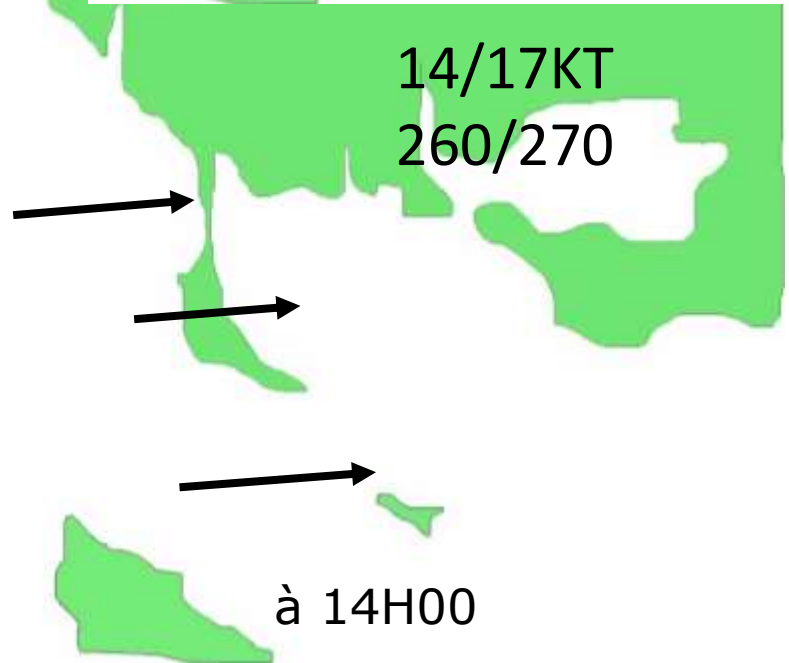
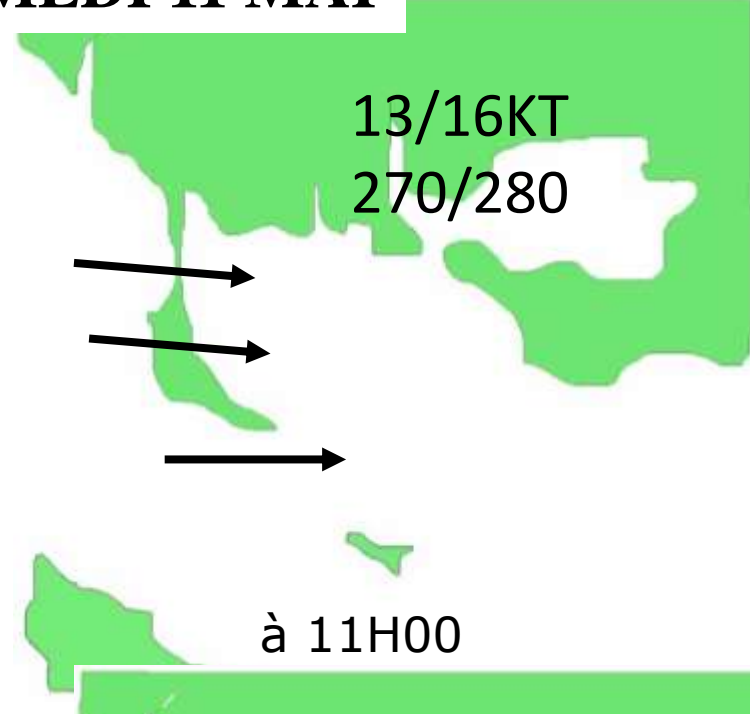
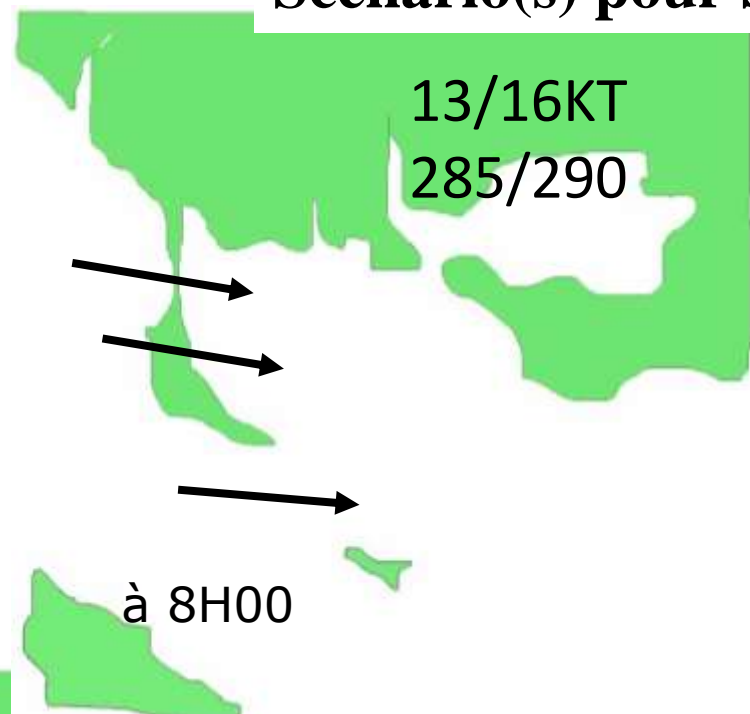
Courant: PM 06H09- BM 12H37 – PM 18H19

COEF 82

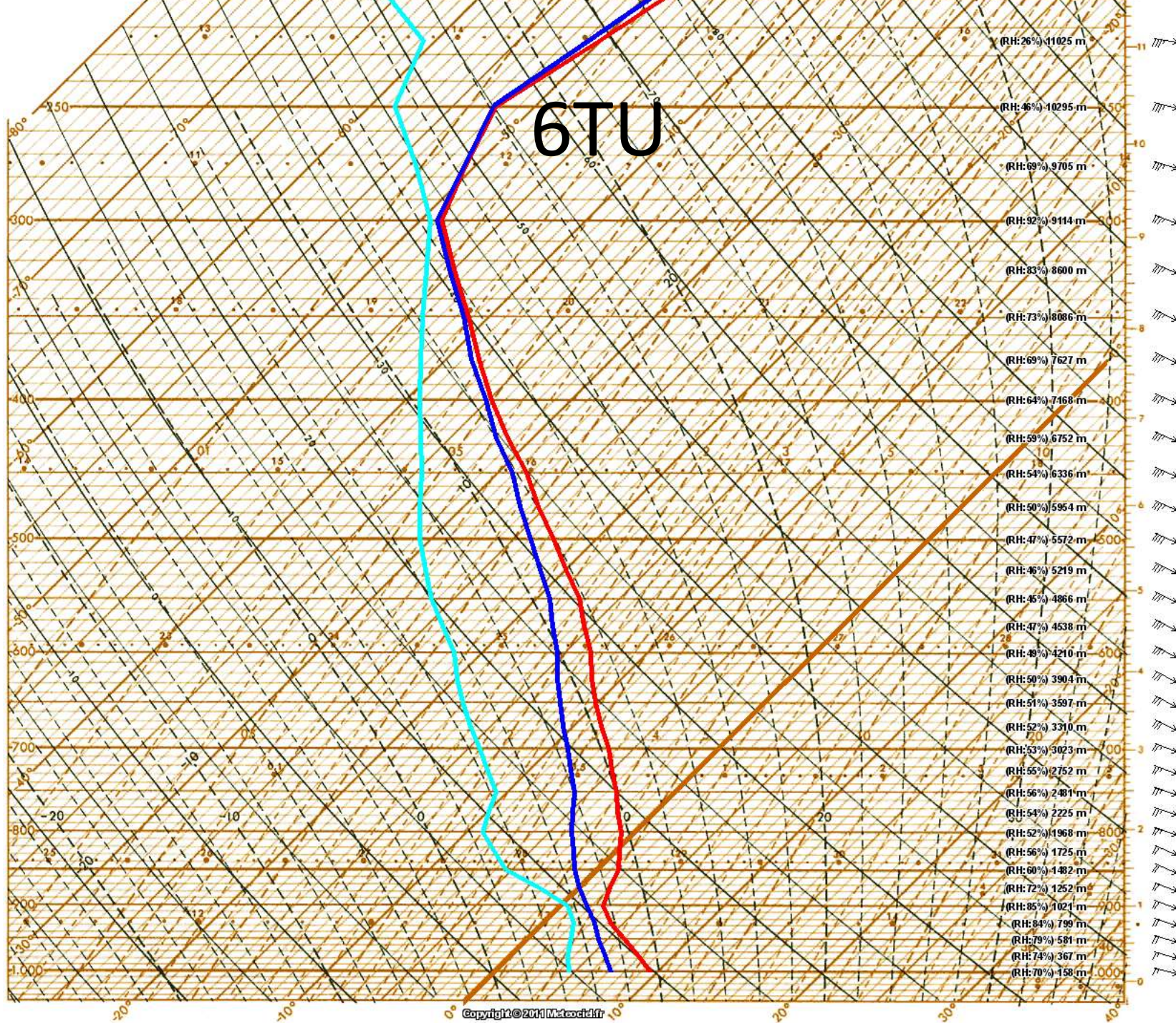
Soleil : Lever 6H41 - Coucher 21H34



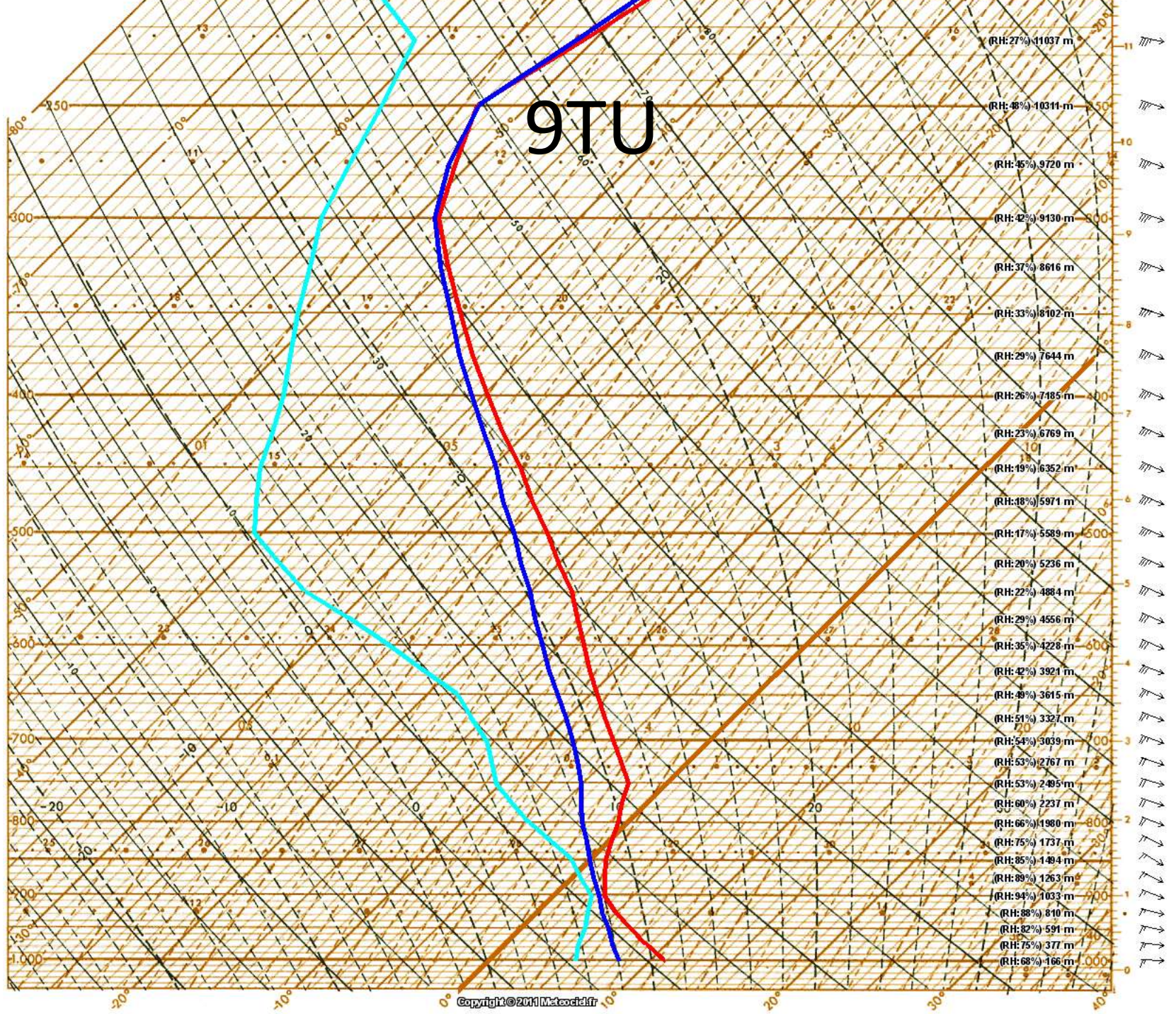
Scénario(s) pour SAMEDI 11 MAI



6TU



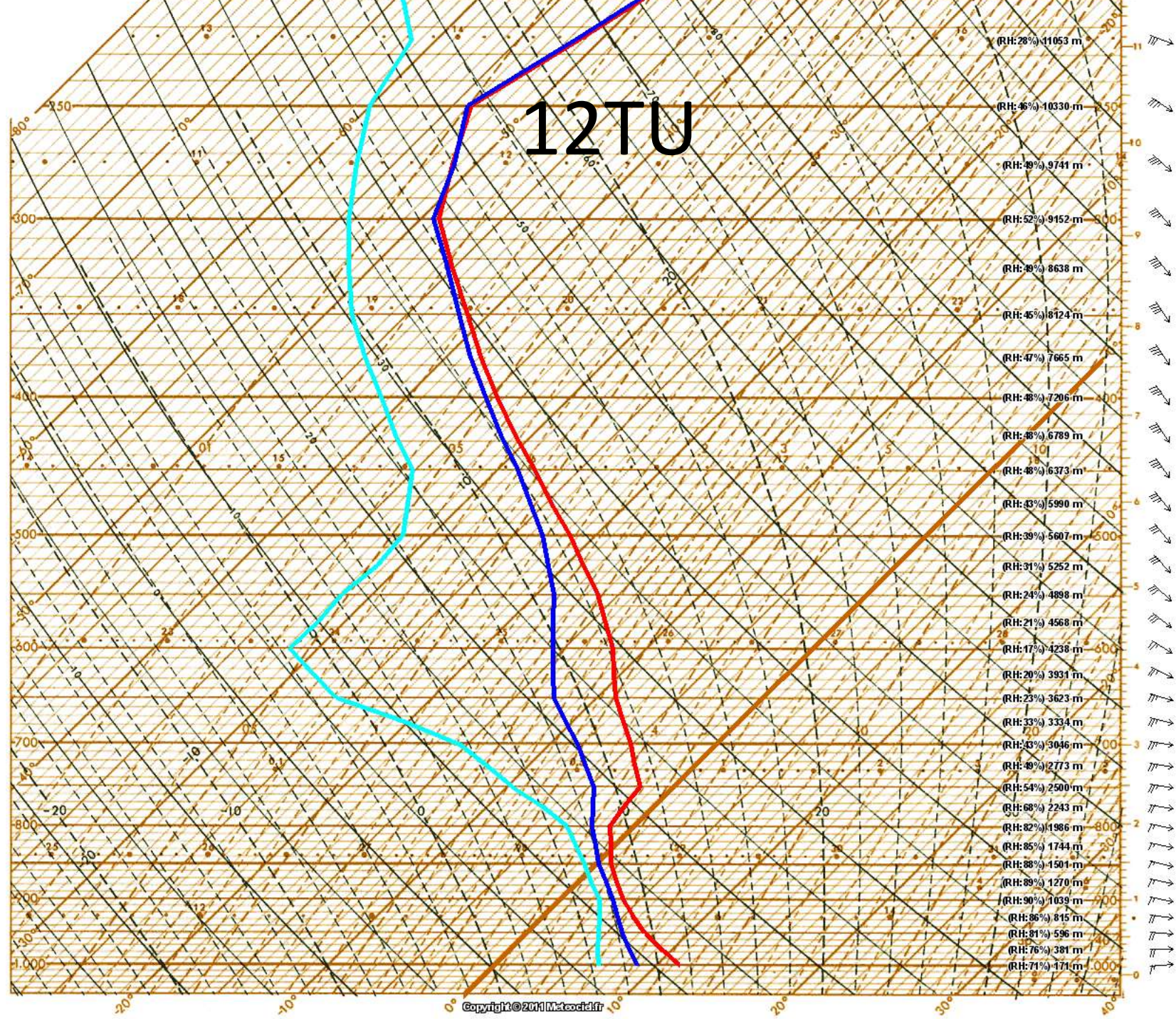
9TU



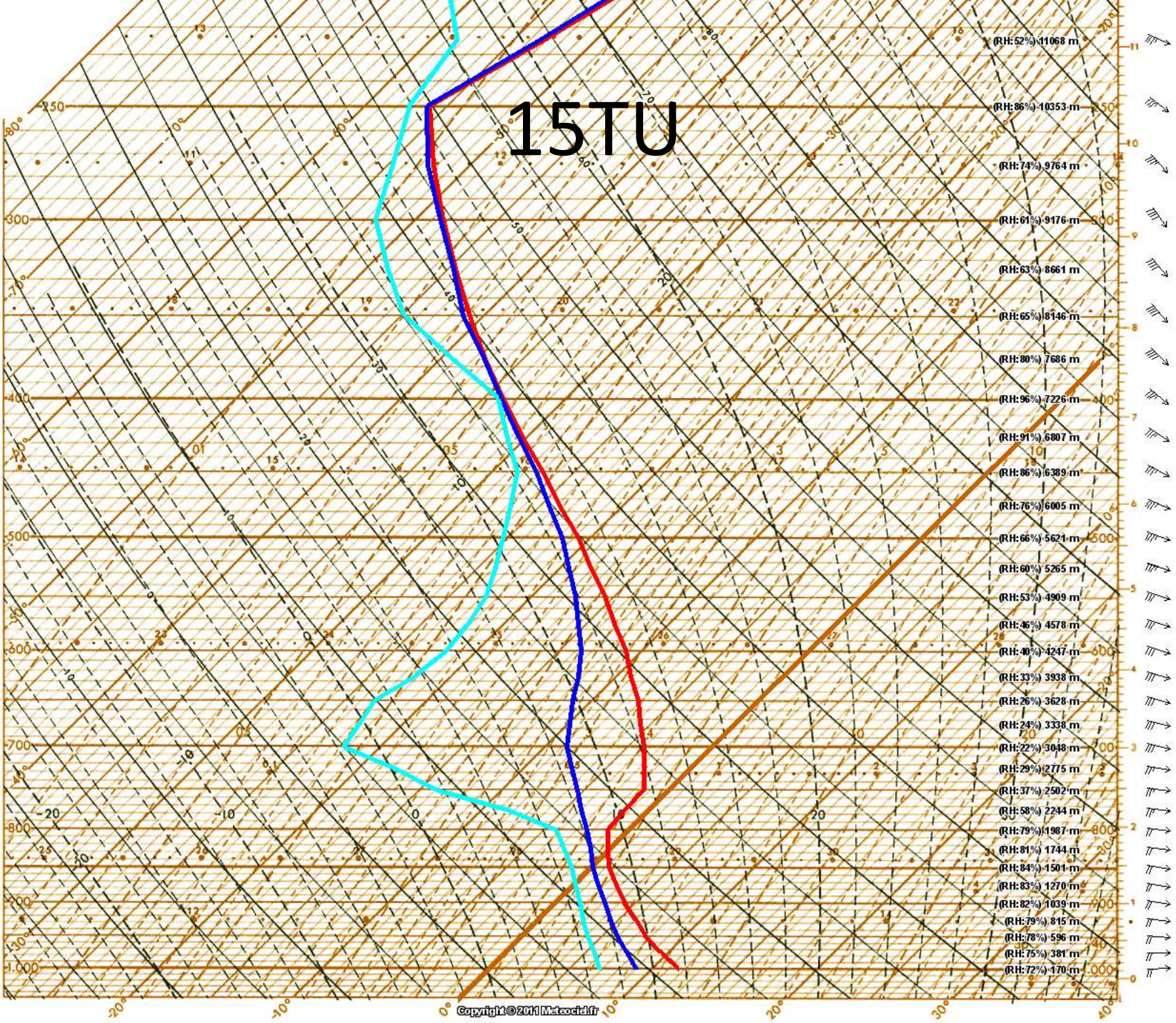
Altitude (m)	Relative Humidity (RH)
11037	27%
10314	48%
9720	45%
9130	42%
8616	37%
8102	33%
7644	29%
7185	26%
6769	23%
6352	19%
5971	18%
5589	17%
5236	20%
4884	22%
4556	29%
4228	35%
3921	42%
3615	49%
3327	51%
3039	54%
2767	53%
2495	53%
2237	60%
1980	66%
1737	75%
1494	85%
1263	89%
1033	94%
810	88%
591	82%
377	75%
166	68%



12TU



15TU



Altitude (m)	Relative Humidity (RH)
11068	52%
10353	86%
9764	74%
9176	61%
8661	63%
8146	65%
7686	80%
7226	96%
6807	91%
6389	86%
6005	76%
5621	66%
5265	60%
4909	53%
4578	46%
4247	40%
3938	33%
3628	26%
3338	24%
3048	22%
2775	29%
2502	37%
2244	58%
1987	79%
1744	81%
1501	84%
1270	83%
1039	82%
815	79%
596	78%
381	75%
170	72%

